

FUEL HOSE REEL

GASOLINE AND DIESEL FUEL

Models 82986

82987

Series "C"

Installation and operation of the Gasoline and Diesel Fuel Hose Reel is identical with that of the Heavy Duty Contractor's Hose Reels as described in service manual, Section E35, Page 21 series with the exception of the supply line from the Pumping Unit to the Hose Reel.

A 60" long hose, 68620, with 3/4" N P T. (Male) for connecting the Pumping Unit to the Hose Reel is available. If this length is not sufficient, two lengths can be connected together with a 3/4" N P T pipe coupling

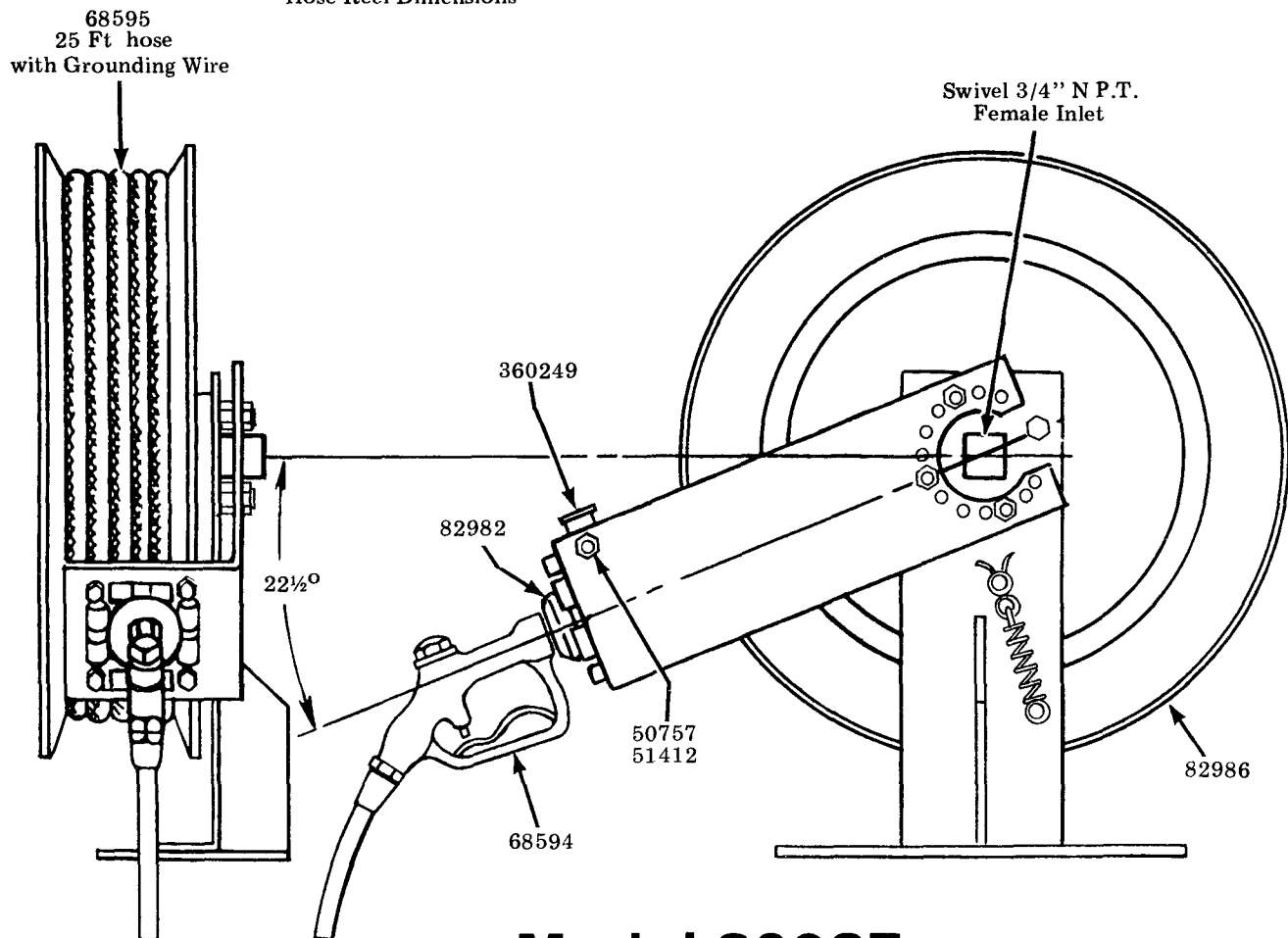
IMPORTANT

The connecting hose must include a grounding wire connected to the hose couplings to prevent a static electric charge

If hose reel is used on a portable contractor's Lubrovan or Lubmobile, the vehicle must be grounded by a chain or ground strap. If a wood platform is used, the hose reel frame must be grounded to the vehicle frame.

Fluid pressure must not exceed 50 P S I when using the 68594 Gasoline Nozzle

Refer to Section E35, Page 21 Series for Hose Reel Dimensions



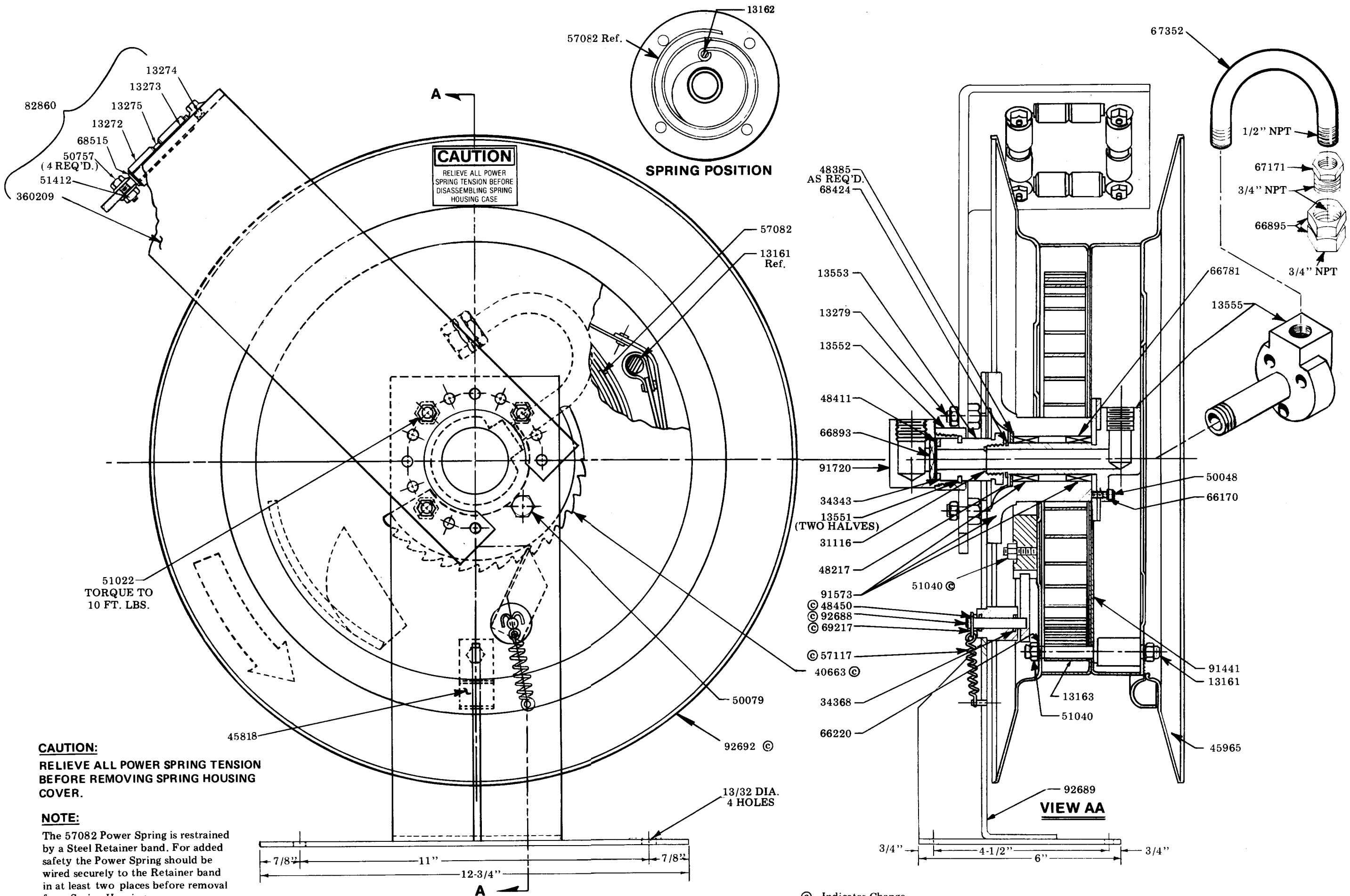
Model 82987

LINCOLN

LINCOLN, One Lincoln Way
St. Louis, Missouri 63120-1578
(314) 679-4200 Customer Service, (314) 679-4300

SECTION - E35

PAGE - 23C



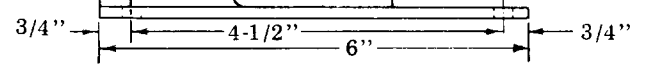
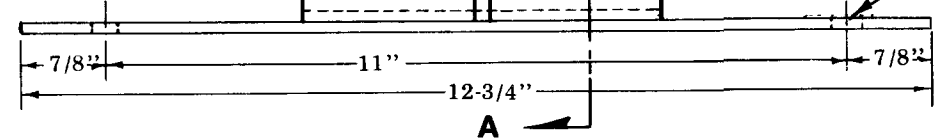
CAUTION
RELIEVE ALL POWER
SPRING TENSION BEFORE
DISASSEMBLING SPRING
HOUSING CASE

SPRING POSITION

51022
TORQUE TO
10 FT. LBS.

CAUTION:
RELIEVE ALL POWER SPRING TENSION
BEFORE REMOVING SPRING HOUSING
COVER.

NOTE:
The 57082 Power Spring is restrained
by a Steel Retainer band. For added
safety the Power Spring should be
wired securely to the Retainer band
in at least two places before removal
from Spring Housing.



© Indicates Change

SERVICE PARTS

PART NO.	QTY.	DESCRIPTION	PART NO.	QTY.	DESCRIPTION
13161	3	Stud	51412	5	Nut
13162	1	Spring Pin	57082	1	Power Spring
13163	3	Spacer	57117	1	Spring
13272	8	Roller	66170	3	Washer
13273	2	Pin	66220	5	Washer
13274	2	Pin	66893	1	Wave Washer
13275	2	Spacer	66895	1	Adapter Union
13279	3	Stud	66781	2	Bearing
13551	1	Retainer Ring	67171	1	Bushing
13552	1	Volume Swivel Retainer	67352	1	Pipe
13553	1	Volume Swivel Body	68424	1	Retaining Ring
13555	1	Shaft	68515	8	Retaining Ring
31116	1	Check Seat Gasket	68594	1	Gasoline Nozzle
34343	1	Packing	68595	1	Hose
34368	2	O-Ring	69217	1	Cotter Pin
45818	1	Hose Clamp	82860	1	Roller Outlet Assembly
45965	1	Sheave Half	82982	1	Ball Stop Assembly
48217	1	Washer	82986	1	Basic Lubreel
48385	4	Shim Washer	91441	1	Spring Housing
48411	2	Washer	91573	1	Arbor Assembly
48450	1	Washer	91720	1	Volume Swivel Elbow
50048	3	Screw	92688	1	Pawl Assembly
50079	1	Screw	92689	1	Support
50757	5	Bolt	92735	1	Sheave
51022	3	Nut	360209	1	Roller Support Arm
51040	6	Nut	360249	1	Bracket

RETAIN THIS INFORMATION FOR FUTURE REFERENCE

When ordering replacement parts, list: Part Number, Description, Model Number, and Series Letter

LINCOLN provides a Distributor Network that stocks equipment and replacement parts