

# DUAL HOSE REEL

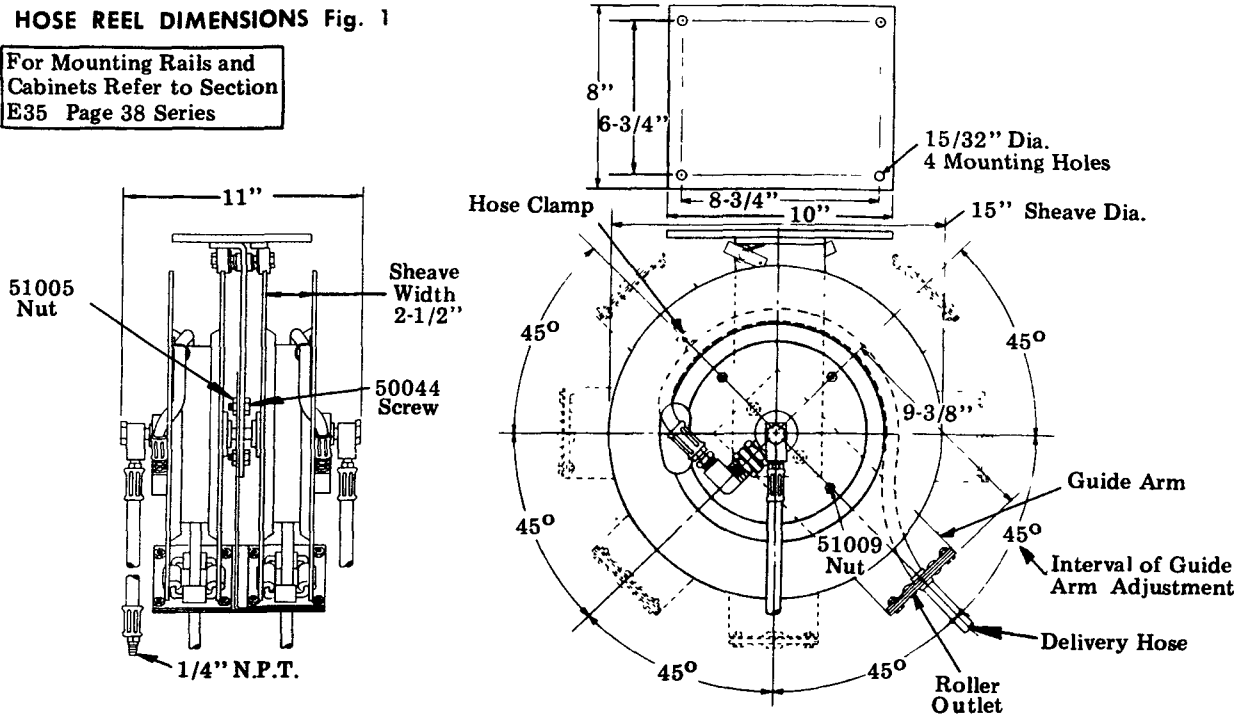
*FAX COPY*

# Model 83944

# Series "B"

## HOSE REEL DIMENSIONS Fig. 1

For Mounting Rails and Cabinets Refer to Section E35 Page 38 Series



### INSTRUCTIONS FOR POSITIONING ROLLER GUIDE ARM

Dual Hose Reels are shipped without tension on Reel Springs. Before installing Delivery Hoses, the Reel Springs must be wound 15 turns of the Reel Sheaves for maximum Hose retraction.

Assemble Delivery Hose into Reel and clamp to Sheave with Hose Clamp. Wrap Hose onto Sheave before inserting free end of Hose through Roller Outlet. Delivery Hose must be pulled out to its full extendible length and allow Reel to latch.

The Guide Arm may be located in any of the seven positions shown which are at intervals of 45° apart. This allows Hose Reel to be mounted in various positions as shown in Figures 2 thru 5 and provides for minimum tension on the Roller Outlet when the Delivery Hose is withdrawn from the Reel or when it is retracted.

To position the Roller Guide Arm to any of the seven positions shown, Fig. 1, remove the two 50044 Hex Screws and 51005 Hex Nuts. Place Guide Arm in desired position and replace Screws and Nuts.

### ALIGNMENT OF HOSE CLAMP (adjustment required for each Reel)

The four 51009 Hex Nuts holding the 92069 Sheave Disc in place must be removed and the Sheave Disc rotated so that the Hose Clamp 69737 is in direct alignment with the Screws and Nuts which hold the Roller Guide Arm in place (180° from the Roller Outlet). Replace Lockwashers and 51009 Hex Nuts and tighten securely.

This adjustment is necessary for each Reel to give maximum extendible Delivery Hose length and to assure that both Dual Reels will latch and retract the Hose when it is pulled out to its full length.

OPERATION AND SERVICE CONTINUED ON BACK PAGE.

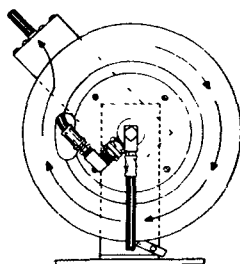


Fig. 2  
FLOOR  
INSTALLATION

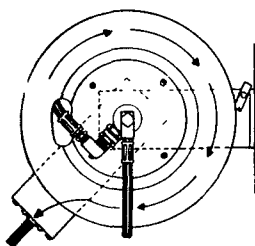


Fig. 3  
WALL, POST OR  
ABOVE BENCH  
INSTALLATION

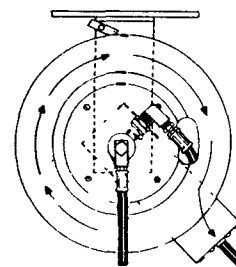


Fig. 4  
CEILING  
INSTALLATION

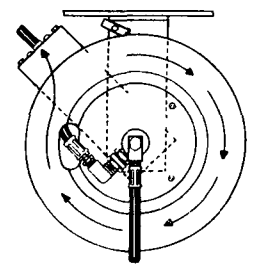
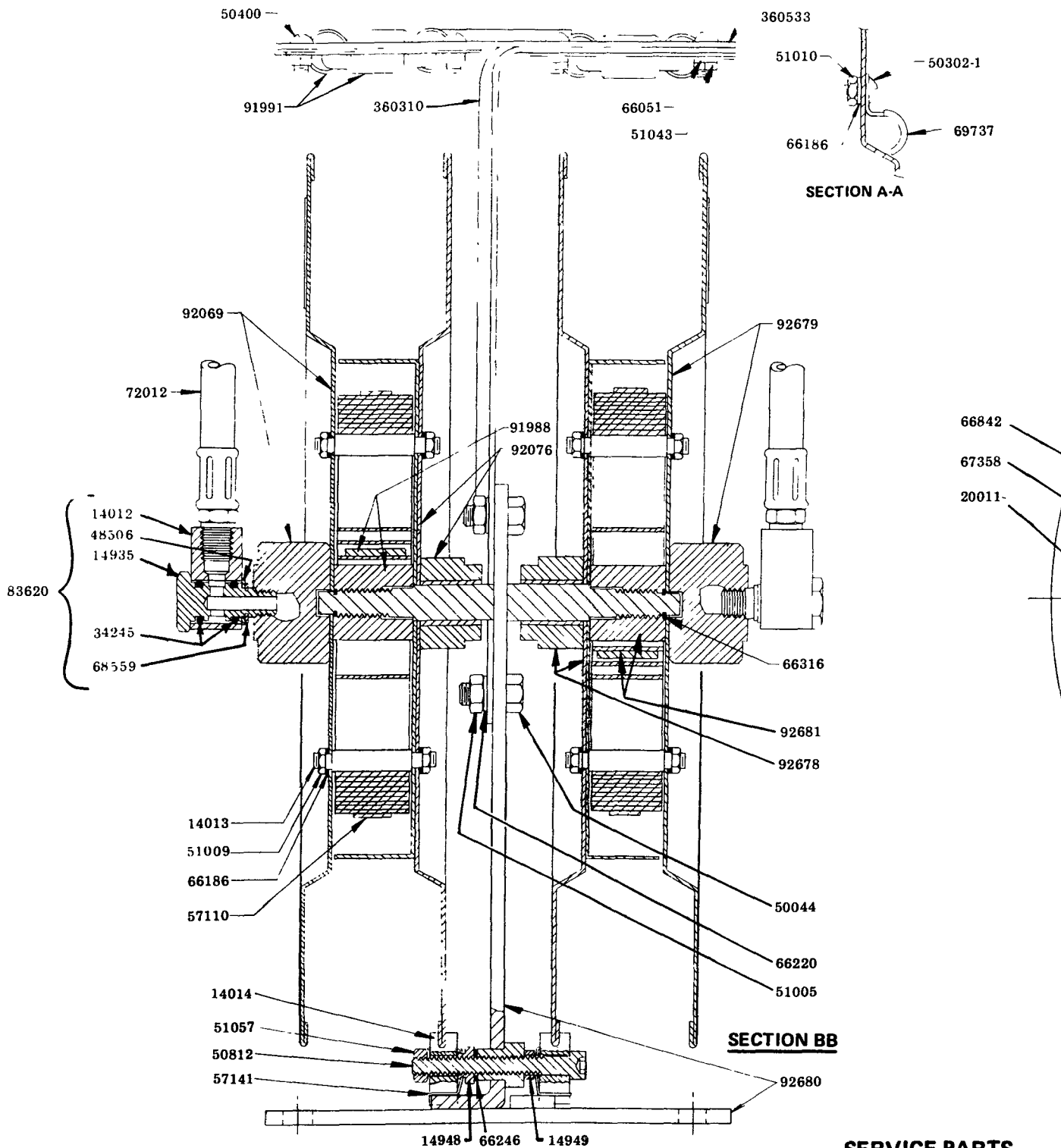


Fig. 5  
UNDER BENCH  
INSTALLATION

**LINCOLN**

One Lincoln Way St. Louis, Missouri 63120-1578  
(314) 679-4200 Telex 44881

SECTION - **E35**  
PAGE - **32B**

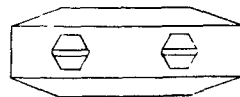


**SERVICE PARTS**

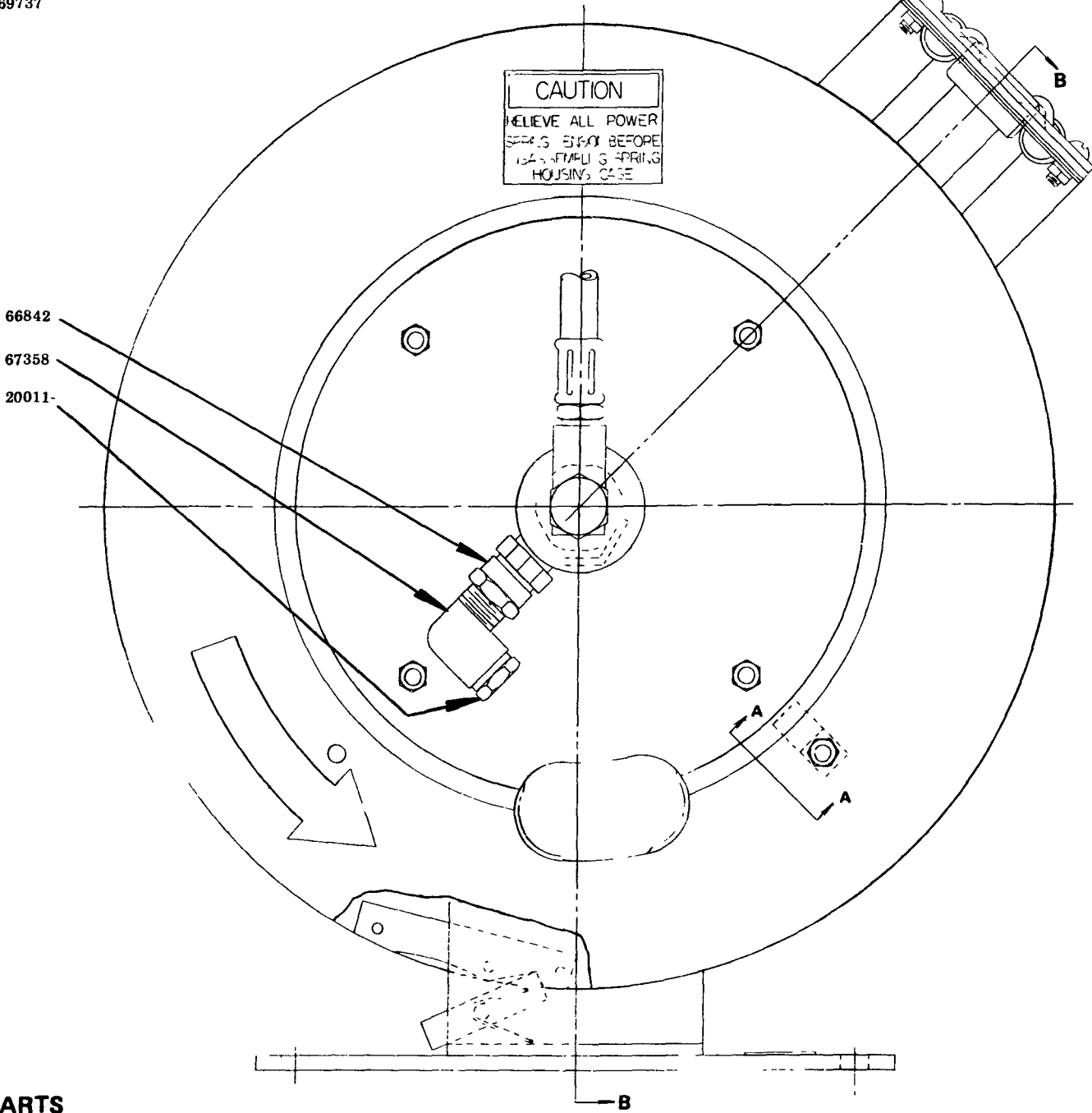
PART NO.	QUAN.	DESCRIPTION	PART NO.	QUAN.	DESCRIPTION
14012	1	Swivel Block	51009	16	Nut
14013	8	Stud	51010	2	Nut
14014	2	Latch	51043	8	Nut
14935	1	Inlet Stud	51057	1	Nut
14948	1	Nut	57110	2	Power Spring
14949	1	Spacer	57141	2	Latch Spring
20011	2	Bushing	66051	8	Lockwasher
34245	2	"O"-Ring	66186	18	Lockwasher
48506	1	Washer	66220	2	Lockwasher
50044	2	Screw	66246	1	Lockwasher
50302-1	2	Screw	66316	2	Retaining Ring
50400	8	Screw	66842	2	Adapter Union
50812	1	Screw	67358	2	Elbow
51005	2	Nut	68559	1	Retaining Ring

- 50302-1

69737



83515



**PARTS**

DESCRIPTION	PART NO.	QUAN.	DESCRIPTION
Nut	69737	2	Clip
Nut	72012	2	Hose Assembly
Nut	83515	2	Ball Stop
Nut	83620	2	Swivel
Power Spring	91988	1	Arbor Assembly
Latch Spring	91991	2	Roller Outlet
Lockwasher	92069	1	Sheave
Lockwasher	92076	1	Sheave
Lockwasher	92678	1	Sheave
Lockwasher	92679	1	Sheave
Retaining Ring	92680	1	Base
Adapter Union	92681	1	Arbor Assembly
Elbow	360310	1	Roller Support Bracket
Retaining Ring	360533	1	Roller Bracket

## SUPPLY LINE RECOMMENDATIONS

### AIR SUPPLY LINE

**TUBING** - 3/8" O.D. x .032" wall copper tubing. Any compression type brass tube fittings can be used. Outlet to be 1/4" N.P.T. (Female)

**PIPE** - 3/8" standard pipe up to 50 ft. length. 1/2" standard pipe over 50 ft. and up to 100 ft. length. Use banded standard malleable fittings. (Outlet to be 1/4" N.P.T. (Female))

### WATER SUPPLY LINE

**TUBING** - 5/8" O.D. x .083" wall seamless steel tubing. Use Lincoln type fittings, Parker Ferulok, Lenz, Weatherhead Ermeto type fittings. Outlet to be 1/4" N.P.T. (Female)

**PIPE** - 1/2" or 3/4" standard pipe. Use banded standard malleable fittings. Outlet to be 1/4" N.P.T. (Female)

**IMPORTANT:**— Use new pipe and clean inside of pipe thoroughly before joining individual lengths. Tilt each length and pound exterior of pipe to loosen and dislodge pipe scale, rust, dirt, etc. After joining Lines and before connecting to Hose Reels, run a generous amount of water through the Water Line and blow out the Air Supply Line. This will remove any remaining scale, etc. from the Lines and prevent possible damage to Hose Reels and Control Valves.

**NOTE:** It is recommended that a 66536 Air Filter be installed in the Air Supply Line and a 66084 Globe Valve be installed in the Water Line.

### OPERATION OF HOSE REEL

The Spring Operated Hose Reel works on the same principle as a window shade. Pull Delivery Hose out to the length needed and then slowly permit the Hose to retract several inches. This will permit the Automatic Latch to lock the Reel and hold the Delivery Hose in the extended position. To retract the Hose onto the Hose Reel, pull the Hose out several inches to disengage the Automatic Latch.

**CAUTION:** Do not release Control Valve until after Delivery Hose has been fully retracted on the Hose Reel.

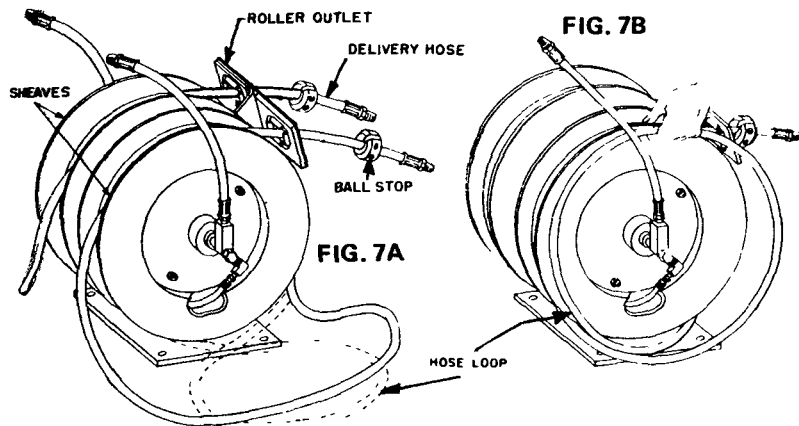
### SERVICE INSTRUCTIONS

Each Hose Reel is originally set for the proper **SPRING TENSION** under normal operating conditions. Operating the Hose Reel with additional Hose lengths than supplied, may require additional **SPRING TENSION** to retract all of the Delivery Hose.

### ADJUSTMENT OF SPRING TENSION

Shut off supply to Hose Reel and relieve pressure in Delivery Hose by opening the Control Valve. Pull Delivery Hose out approximately four feet and latch the Hose Reel. Withdraw Hose back through Roller Outlet. (Refer to Fig. 7A) Loop Hose slack into a figure eight and place Hose Loop on Sheave. (Refer to Fig. 7B) Test for spring tension by withdrawing Hose from Hose Reel (through Roller Outlet). If additional spring tension is needed, add an additional wrap of Hose on the Hose Reel Sheave, following the above procedure.

**CAUTION:** When increasing the spring tension, do not wrap too many turns of Hose on Hose Reel Sheave, as it will cause the spring to wind tight before the entire Delivery Hose can be withdrawn. After Delivery Hose is withdrawn for its full extended length, the spring tension should be such that it would require at least an additional 1/3 turn of the Hose Reel Sheave before the spring winds tight. To decrease the spring tension, unwrap one or more turns of Hose from the Hose Reel Sheave.



### TO REPLACE DELIVERY HOSE

Shut off supply to Hose Reel and relieve any pressure remaining in the Delivery Hose by opening the Control Valve.

- 1 - Remove Control Valve and Ball Stop from Delivery Hose and remove from Hose Reel. Remove Hose Clamp from Sheave and remove Hose.
- 2 - Install new Delivery Hose and Clamp to Sheave with Hose Clamp. Wrap Hose onto Sheave before inserting free end of Hose through Roller Outlet.
- 3 - Assemble Ball Stop and Control Valve to Delivery Hose. Withdraw Hose from Reel to check for spring tension.

### RETAIN THIS INFORMATION FOR FUTURE REFERENCE

When ordering replacement parts, list: Part Number, Description, Model Number, and Series Letter.

LINCOLN provides a Distributor Network that stocks equipment and replacement parts.

A list of Authorized Service Departments will be furnished upon request.