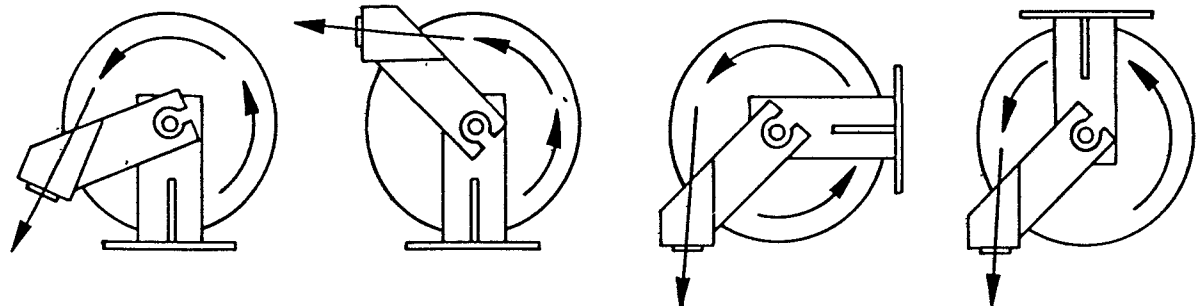


INSTALLATION

The guide arm may be positioned in 22-1/2° increments as shown above. For ease of operation and increased hose life, the guide arm should be positioned to minimize hose flexure as the delivery hose passes through the roller outlet.

Three studs must be used to securely attach the guide arm. In some cases it may be necessary to change the position of the hex head screw and one stud in order to position the guide arm. The hose clamp must be relocated if the guide arm is in position "B" in the illustration above. Refer to Bare Reel drawing for hose clamp locations.

DIAGRAMATIC VIEWS



**FIG. 2
LUBROVAN
INSTALLATION
CONTRACTOR TYPE**

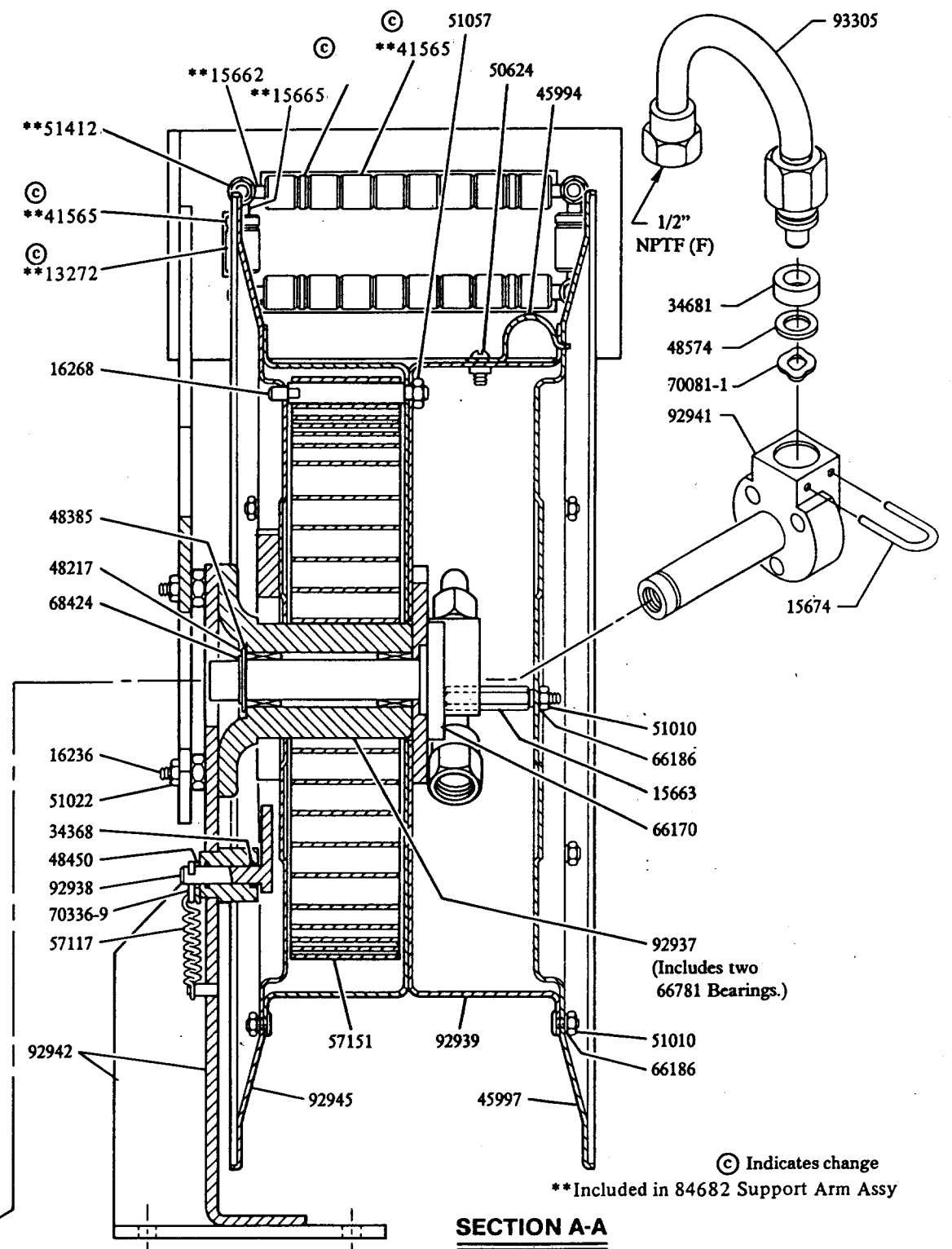
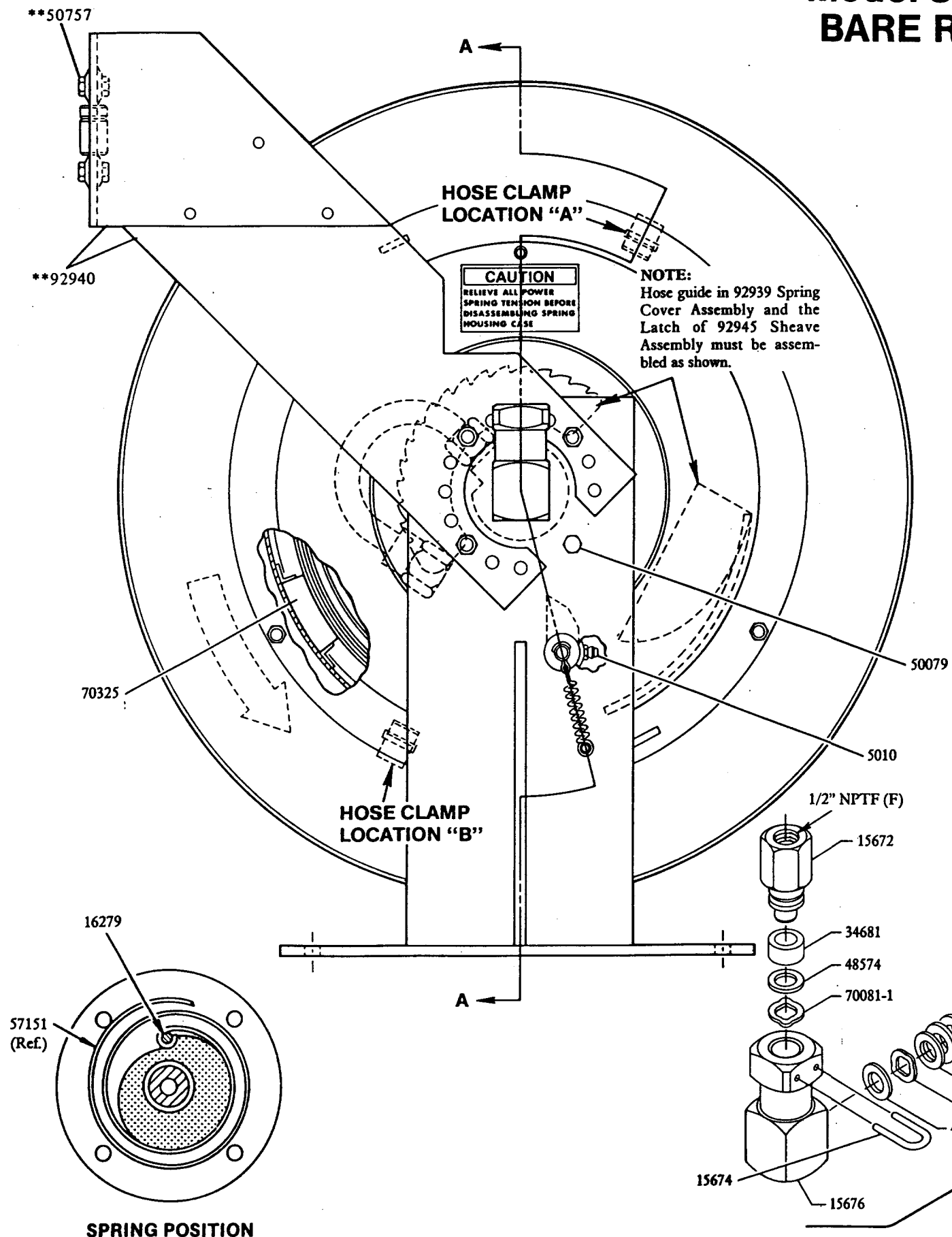
**FIG. 3
FLOOR
INSTALLATION**

**FIG. 4
WALL, POST
OR ABOVE BENCH
INSTALLATION**

**FIG. 5
CEILING
INSTALLATION
OR FOR USE
WITH LUBREEL
SUPPORT STAND**

NOTE: Arrow indicates direction of hose as it is withdrawn from hose reel.

Model 84275 BARE REEL

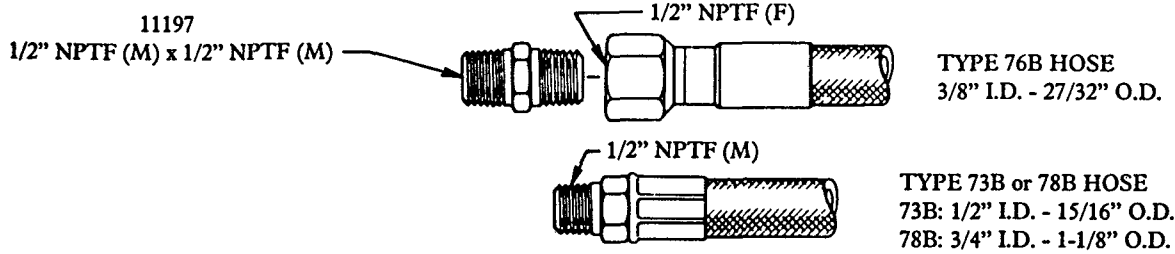


CAUTION

RELIEVE ALL POWER SPRING TENSION BEFORE REMOVING SPRING HOUSING COVER BY RELEASING LATCH AND MANUALLY RESTRAINING UNWIND SPEED OF REEL. SHEAVE ASSEMBLIES SHOULD BE SEPARATED WHEN IN A HORIZONTAL POSITION WITH 45997 DOWN ON A FLAT SURFACE.

NOTE:
The power spring is restrained by a steel retainer band. For added safety, the power spring should be wired securely to the retainer band in at least three places before removal from the spring housing.

**ADAPTERS FOR DELIVERY AND CONNECTING HOSES
NOT FURNISHED WITH BARE REEL - MUST BE ORDERED SEPARATELY**



HEAVY DUTY LUBREEL ASSEMBLIES

Lubreel Model No.	Basic Reel No.	Delivery Hose No.	Hose Length	Ball Stop No.	Delivery Kit No.	Includes:	Service
84344-75	*85025-75	76B900	75'	83517	85022	3050, 81729	Chassis
84345-75	85026-75	73B900	75'	83517	—	775	Oils or Gear Lube
84346-65	85027-65	78780	65'	84347	—	775	Oils or Gear Lube
84346-75	85027-75	78900	75'	84347	—	775	Oils or Gear Lube

*Includes 11197 Adapter for delivery hose.

SERVICE PARTS

PART	QUAN.	DESCRIPTION	PART	QUAN.	DESCRIPTION
5010	1	Lubricant fitting	50079	1	Screw
13272	2	Roller	50624	1	Screw
15662	2	Pin	50757	4	Screw
15663	3	Extension screw	51010	15	Nut
15665	2	Pin	51022	3	Nut
15672	1	Adapter	51057	1	Locknut
15674	2	Keeper	51412	4	Nut
15675	1	Packing retainer	57117	1	Spring
15676	1	Swivel body	57151	1	Power spring
16236	3	Stud	66170	3	Lockwasher
16268	1	Spring retainer	66186	15	Lockwasher
16279	1	Spring pin	66781	2	Bearing
34368	2	O-ring	68424	1	Retaining ring
34681	2	Packing	70081-1	3	Wave washer
34682	1	Packing (leather)	70325	2	Rubber pad
34683	1	Packing (rubber)	70336-9	1	Cotter pin
41564	16	Roller	84276	1	Swivel
41565	6	Roller	84277	1	Swivel stud
45994	1	Hose clamp	92937	1	Arbor assembly
45997	1	Sheave	92938	1	Pawl
48217	1	Washer	92939	1	Spring cover
48385	4	Shim washer	92940	1	Support arm
48450	1	Washer	92941	1	Shaft
48574	2	Packing washer	92942	1	Support
48575	1	Packing washer	92945	1	Sheave
48576	2	Shim washer	93305	1	Tube & adapter

RETAIN THIS INFORMATION FOR FUTURE REFERENCE

When ordering replacement parts, list: Part Number, Description, Model Number, and Series Letter.

LINCOLN provides a Distributor Network that stocks equipment and replacement parts.

A list of Authorized Service Departments will be furnished upon request.