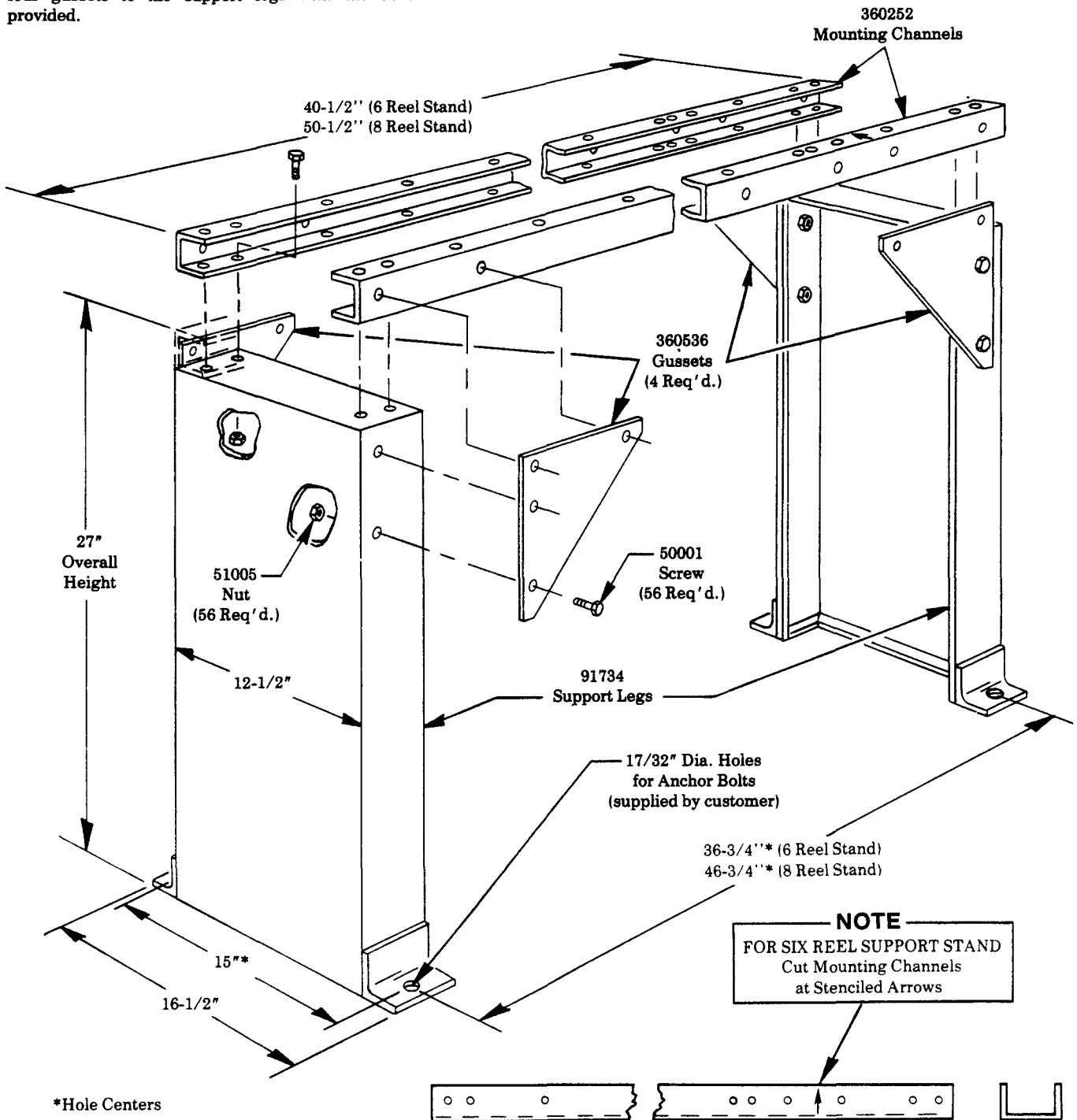
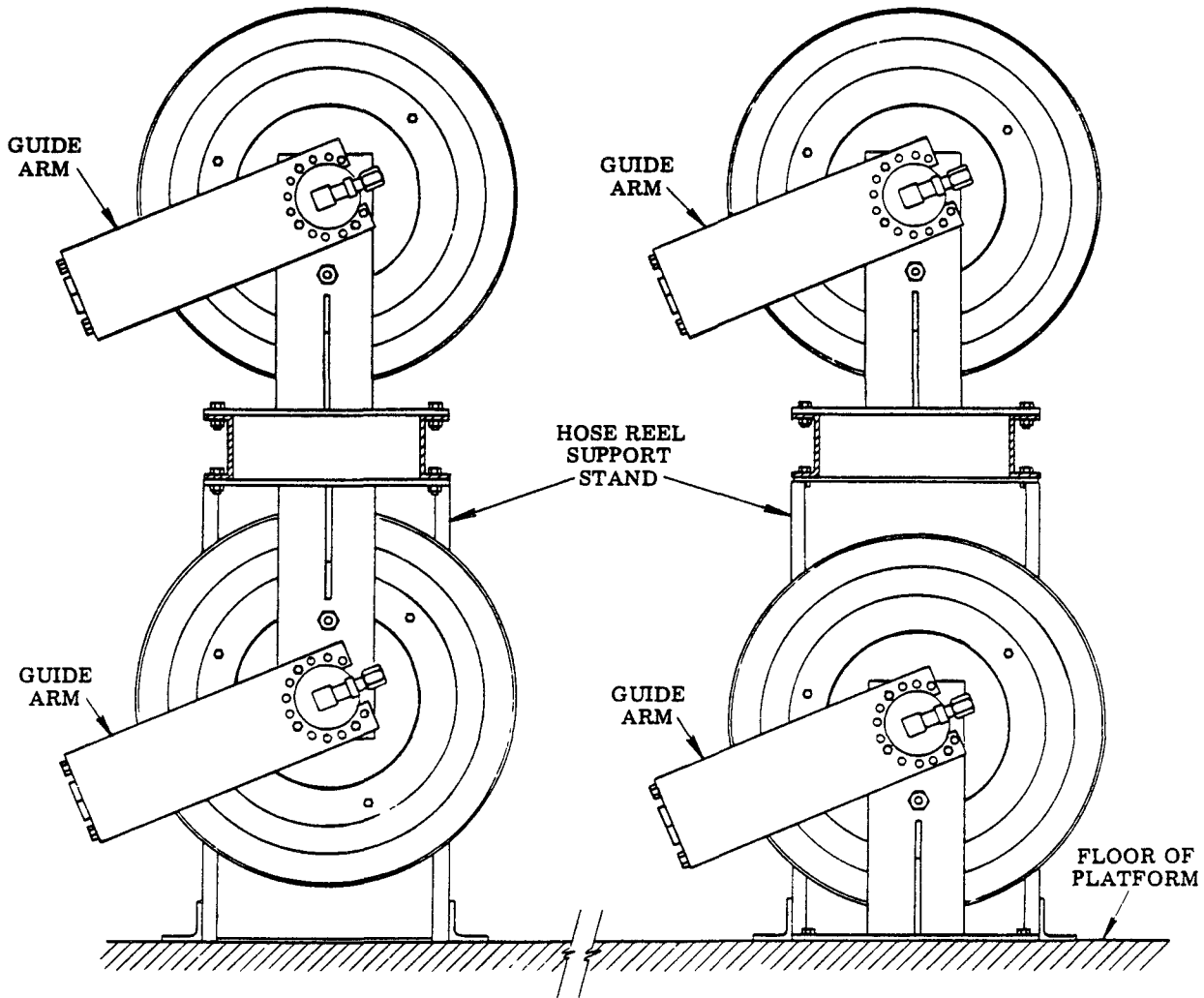


ACCOMMODATES EIGHT REELS MAXIMUM

To assemble, attach the two mounting channels and the four gussets to the support legs with the hardware provided.



The support stand accommodates eight hose reels maximum. Four can be secured to the top flange of the mounting channels and four can either be suspended from the bottom flange of the mounting channels as shown in Fig. 1 or secured to the platform floor as shown in Fig. 2.



**FIG. 1**

Lower hose reels can be suspended from the support stand. Reposition hose reel guide arm as described in installation instructions; Service Page E35-21 Series.

**FIG. 2**

Lower hose reels can be secured to the platform floor.

Chassis and Trac-Roll hose reels should be positioned below the support stand for ease in hanging of control valves.

Refer to Service Page E35-21 Series for separate instructions on hose reels and tie angle.

**RETAIN THIS INFORMATION FOR FUTURE REFERENCE**

When ordering replacement parts, list: Part Number, Description, Model Number, and Series Letter.

LINCOLN provides a Distributor Network that stocks equipment and replacement parts.