

FIG 1
HOSE REEL
DIMENSIONS

INSTALLATION

The guide arm may be positioned in 22½° increments as shown above. For ease of operation and increased hose life, the guide arm should be positioned to minimize hose flexure as the delivery hose passes thru the roller outlet.

Three studs must be used to securely attach the guide arm. In some cases it may be necessary to change the position of the hex head screw and one stud in order to position the guide arm.

The hose clamp must be relocated if the guide arm is in position "B" or "C" in the illustration above. Refer to Bare Reel dwg for hose clamp locations.

DIAGRAMATIC VIEWS

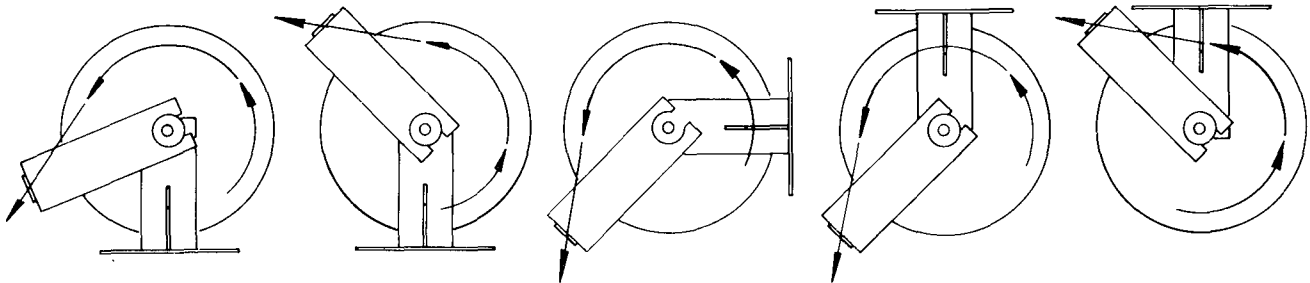


FIG 2
LUBROVAN
INSTALLATION
CONTRACTOR TYPE

FIG 3
FLOOR
INSTALLATION

FIG 4
WALL, POST
OR ABOVE BENCH
INSTALLATION

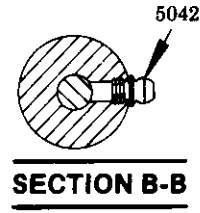
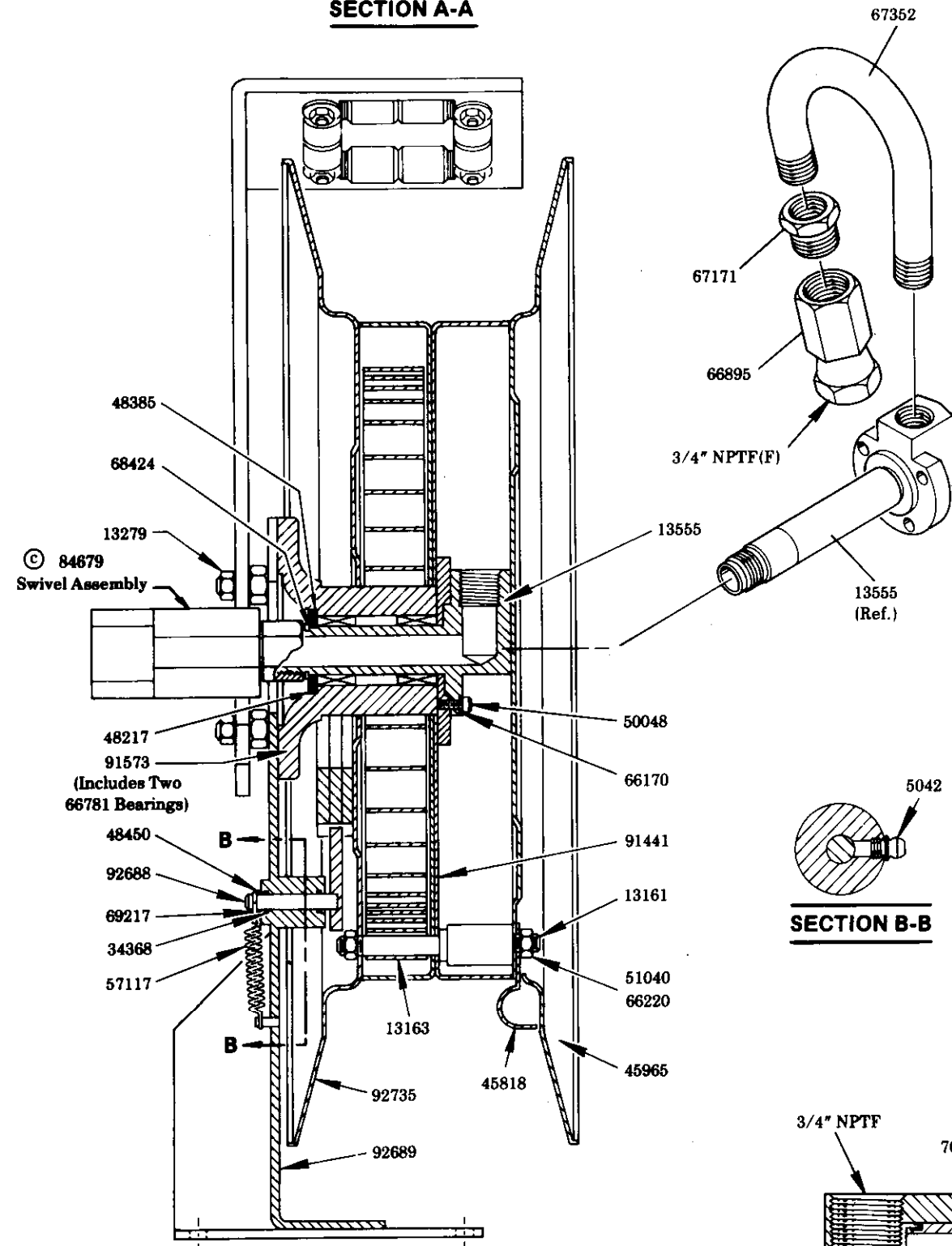
FIG 5
CEILING
INSTALLATION
OR FOR USE
WITH LUBREEL
SUPPORT STAND

FIG 6
UNDER BENCH
INSTALLATION

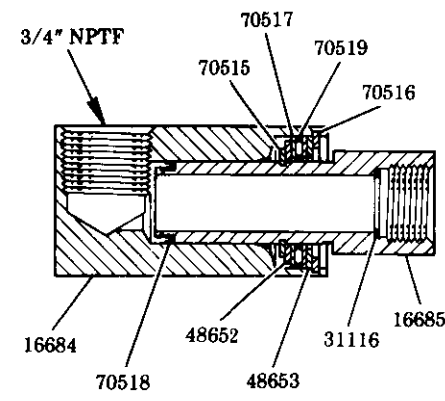
NOTE: Arrow indicates direction of hose as it is withdrawn from hose reel



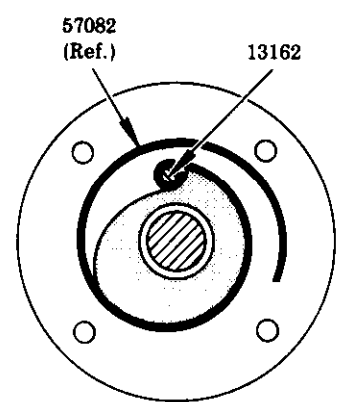
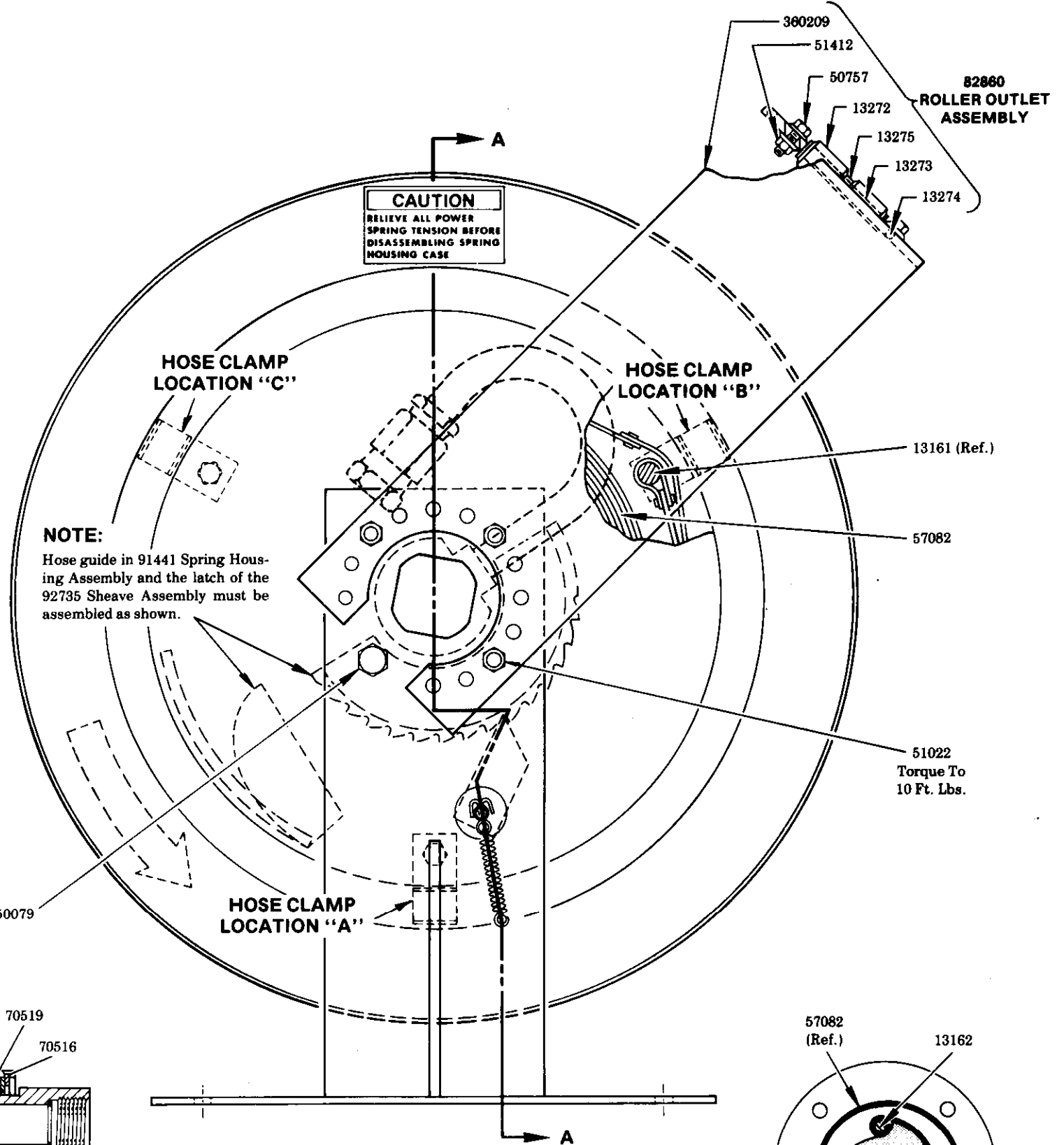
SECTION A-A



SECTION B-B



84679 SWIVEL ASSEMBLY



SPRING POSITION

CAUTION
RELIEVE ALL POWER SPRING TENSION BEFORE REMOVING SPRING HOUSING COVER BY RELEASING LATCH AND MANUALLY RESTRAINING UNWIND SPEED OF REEL. SHEAVE ASSEMBLIES SHOULD BE SEPARATED WHEN IN A HORIZONTAL POSITION WITH 45965 DOWN ON A FLAT SURFACE.

NOTE:
The power spring is restrained by a steel retainer band. For added safety, the power spring should be wired securely to the retainer band in at least three places before removal from the spring housing.

© Indicates change

LUBREEL ASSEMBLY	BASIC REEL	DELIVERY HOSE	HOSE LENGTH	BALL STOP
85028-30	84672	78C360	30 Ft	84347

HOSE	MAX. WORKING PRESSURE (PSI)	MAX. HOSE LENGTH	THREAD CONNECTION	INSIDE DIAMETER
73	1,000	50 Ft.	1/2" NPTF(M)	1/2"
74A	200	40 Ft.	3/4" NPTF(M)	3/4"
78	1,500	40 Ft.	1/2" NPTF(M)	5/8"
78C	1,250	35 Ft.	3/4" NPTF(M)	3/4"

SERVICE PARTS

PART	QUAN.	DESCRIPTION	PART	QUAN.	DESCRIPTION
5042	1	Fitting	51040	6	Nut
13161	3	Stud	51412	4	Nut
13162	1	Spring pin	57082	1	Power spring
13163	3	Spacer	57117	1	Spring
13272	8	Roller	66170	3	Washer
13273	2	Pin	66220	2	Washer
13274	2	Pin	66781	2	Bearing
13275	2	Spacer	66895	1	Adapter union
13279	3	Stud	67171	1	Bushing
13555	1	Shaft	67352	1	Pipe
16684	1	Swivel body	68424	1	Retaining ring
16685	1	Swivel stem	69217	1	Cotter pin
31116	1	Gasket	70515	2	Retaining ring
34368	2	O-ring	70516	1	Retaining ring
45818	1	Hose clamp	70517	2	Thrust washer
45965	1	Sheave half	70518	1	U-cup packing
48217	1	Washer	70519	1	Thrust bearing
48385	4	Shim washer	82860	1	Roller outlet assembly
48450	1	Washer	84679	1	Swivel assembly
48652	1	Washer	91441	1	Spring housing
48653	1	Washer	91573	1	Arbor assembly
50048	3	Screw	92688	1	Pawl assembly
50079	1	Screw	92689	1	Support
50757	4	Bolt	92735	1	Sheave
51022	3	Nut	360209	1	Roller support arm

RETAIN THIS INFORMATION FOR FUTURE REFERENCE

When ordering replacement parts, list: Part Number, Description, Model Number, and Series Letter
 LINCOLN ST. LOUIS provides a Distributor Network that stocks equipment and replacement parts.
 A list of Authorized Service Departments will be furnished upon request.