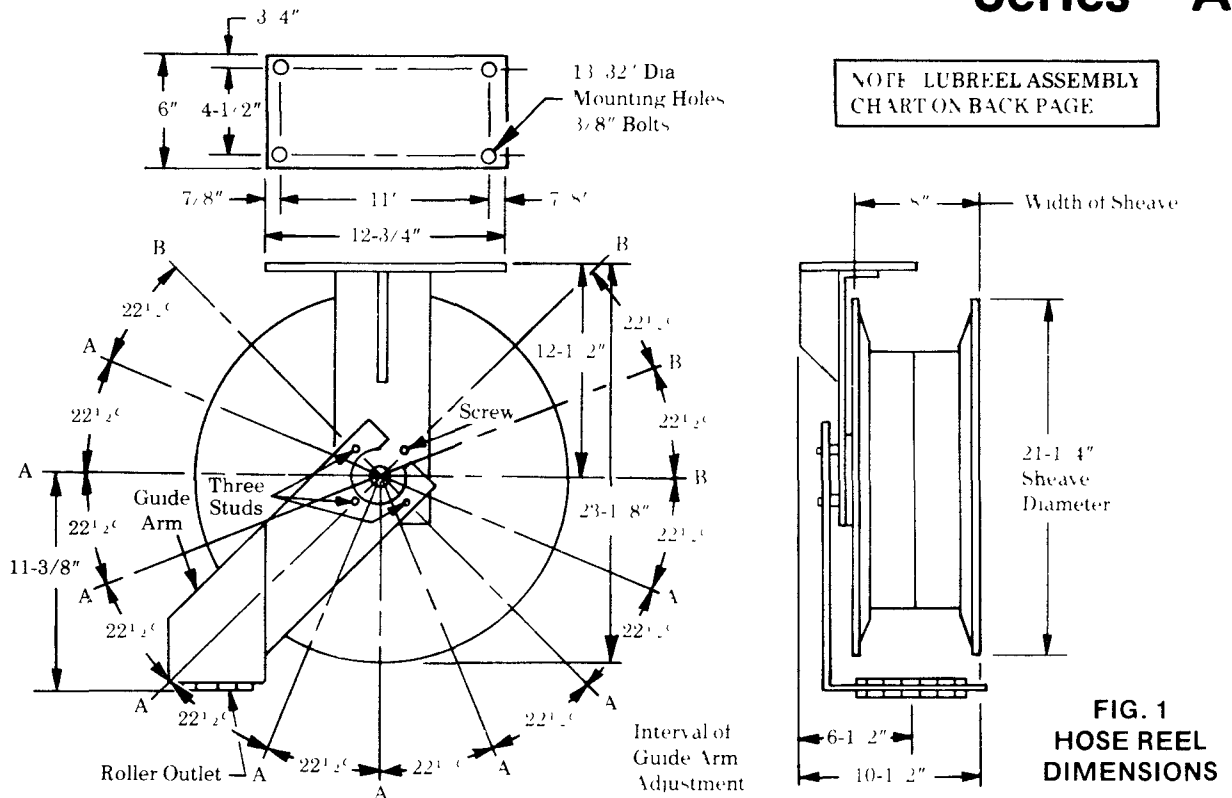


# BARE REEL

# Model 84673

MAX. WORKING PRESSURE - 2,000 PSI

## Series "A"



### INSTALLATION

The guide arm may be positioned in 22-1/2° increments as shown above. For ease of operation and increased hose life, the guide arm should be positioned to minimize hose flexure as the delivery hose passes through the roller outlet.

Three studs must be used to securely attach the guide arm. In some cases it may be necessary to change the position of the hex head screw and one stud in order to position the guide arm.

The hose clamp must be relocated if the guide arm is in position B in the illustration above. Refer to Bare Reel drawing for hose clamp locations.

### DIAGRAMATIC VIEWS

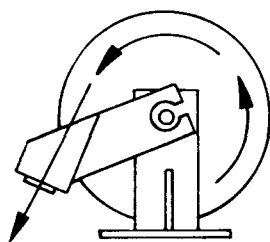


FIG. 2  
LUBROVAN  
INSTALLATION  
CONTRACTOR TYPE

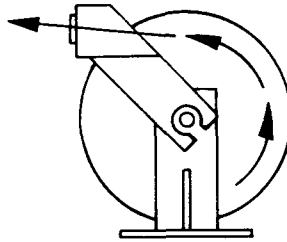


FIG. 3  
FLOOR  
INSTALLATION

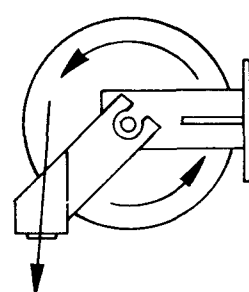


FIG. 4  
WALL, POST  
OR ABOVE BENCH  
INSTALLATION

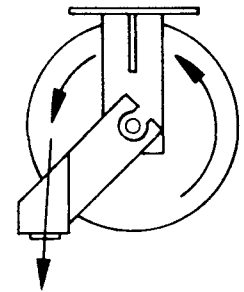


FIG. 5  
CEILING  
INSTALLATION  
OR FOR USE  
WITH LUBREEL  
SUPPORT STAND

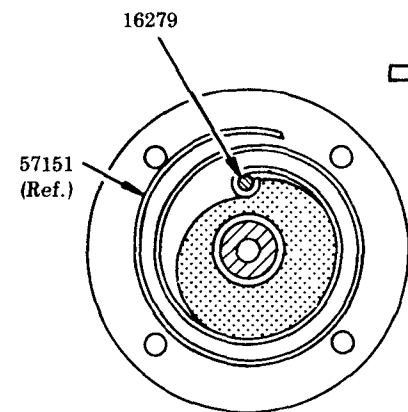
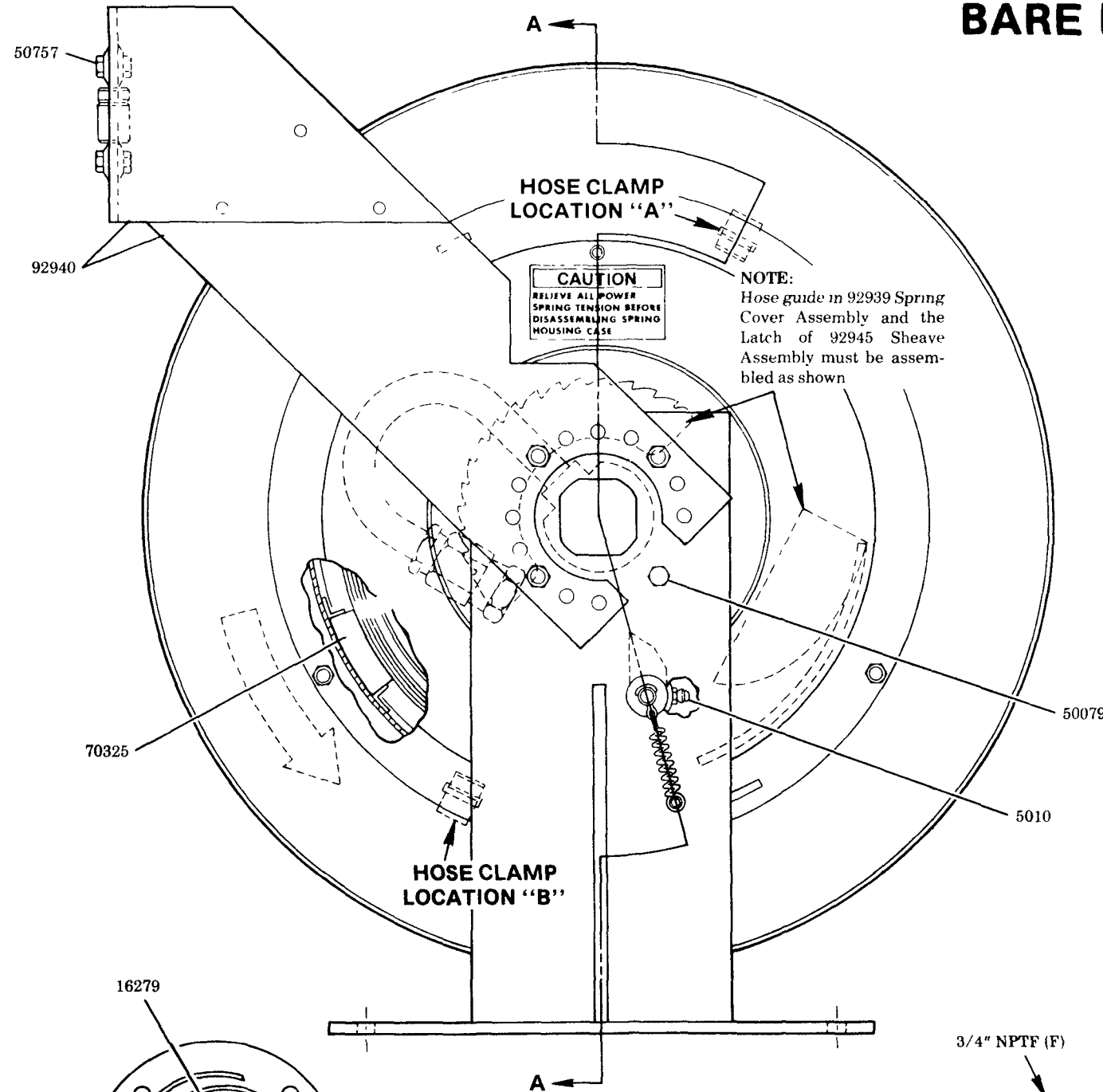
NOTE: Arrow indicates direction of hose as it is withdrawn from hose reel

LINCOLN ST. LOUIS  
4010 GOODFELLOW BLVD • ST LOUIS, MO 63120 • (314) 679-4200

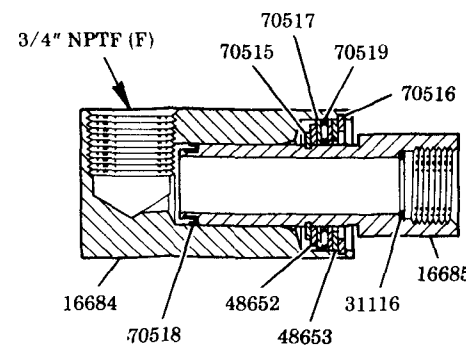
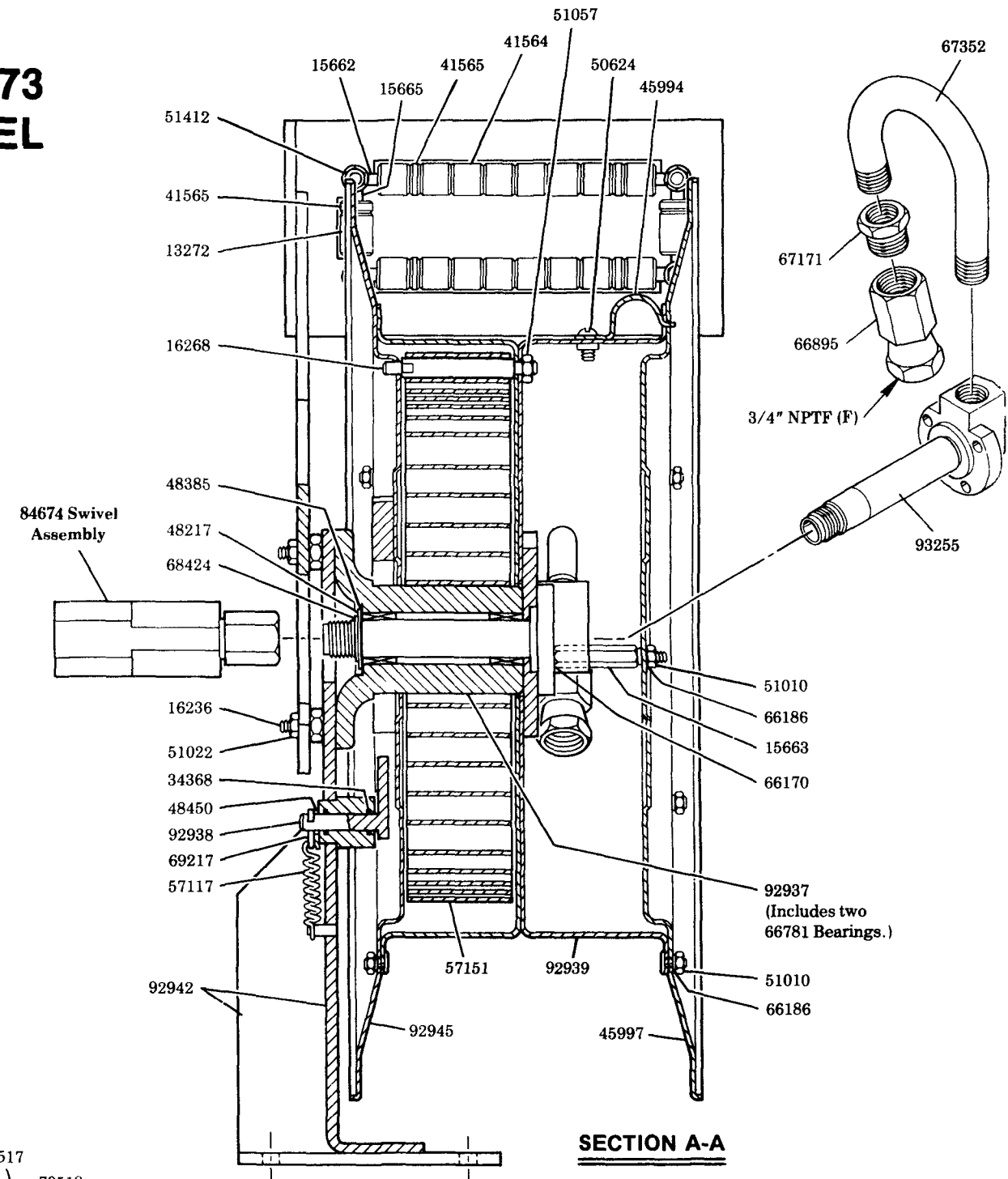


SECTION - E35  
PAGE - 43

# Model 84673 BARE REEL



**SPRING POSITION**



**84674 SWIVEL ASSEMBLY**

**CAUTION**

RELIEVE ALL POWER SPRING TENSION BEFORE REMOVING SPRING HOUSING COVER BY RELEASING LATCH AND MANUALLY RESTRAINING UNWIND SPEED OF REEL. SHEAVE ASSEMBLIES SHOULD BE SEPARATED WHEN IN A HORIZONTAL POSITION WITH 45997 DOWN ON A FLAT SURFACE.

**NOTE:**

The power spring is restrained by a steel retainer band. For added safety, the power spring should be wired securely to the retainer band in at least three places before removal from the spring housing.

LUBREEL ASSEMBLY	BASIC REEL	DELIVERY HOSE	HOSE LENGTH	BALL STOP
85028-50	84673	78C600	50 Ft.	84347
85028-75	84673	78C900	75 Ft.	84347

### SERVICE PARTS

PART	QUAN.	DESCRIPTION	PART	QUAN.	DESCRIPTION
5010	1	Lube fitting	51057	1	Nut
13272	4	Roller	51412	4	Nut
15662	2	Pin	57117	1	Spring
15663	3	Extension screw	57151	1	Power spring
15665	2	Pin	66170	3	Lockwasher
16236	3	Stud	66186	15	Lockwasher
16268	1	Spring retainer	66781	2	Bearing
16279	1	Spring pin	66895	1	Adapter union
16684	1	Swivel body	67171	1	Adapter
16685	1	Swivel stem	67352	1	Pipe
31116	1	Gasket	68424	1	Retaining ring
34368	2	O-ring	69217	1	Cotter pin
41564	16	Roller	70325	2	Rubber pad
41565	6	Roller	70515	2	Retaining ring
45994	1	Hose clamp	70516	1	Retaining ring
45997	1	Sheave half	70517	2	Thrust washer
48217	1	Washer	70518	1	U-cup packing
48385	4	Shim washer	70519	1	Thrust bearing
48450	1	Washer	84674	1	Swivel assembly
48652	1	Washer	92937	1	Arbor
48653	1	Washer	92938	1	Pawl
50079	1	Screw	92939	1	Spring cover
50624	1	Screw	92940	1	Roller support arm
50757	4	Screw	92942	1	Support
51010	15	Nut	92945	1	Sheave half
51022	3	Nut	93255	1	Shaft

**RETAIN THIS INFORMATION FOR FUTURE REFERENCE**

When ordering replacement parts, list: Part Number, Description, Model Number, and Series Letter.  
 LINCOLN ST. LOUIS provides a Distributor Network that stocks equipment and replacement parts.  
 A list of Authorized Service Departments will be furnished upon request.