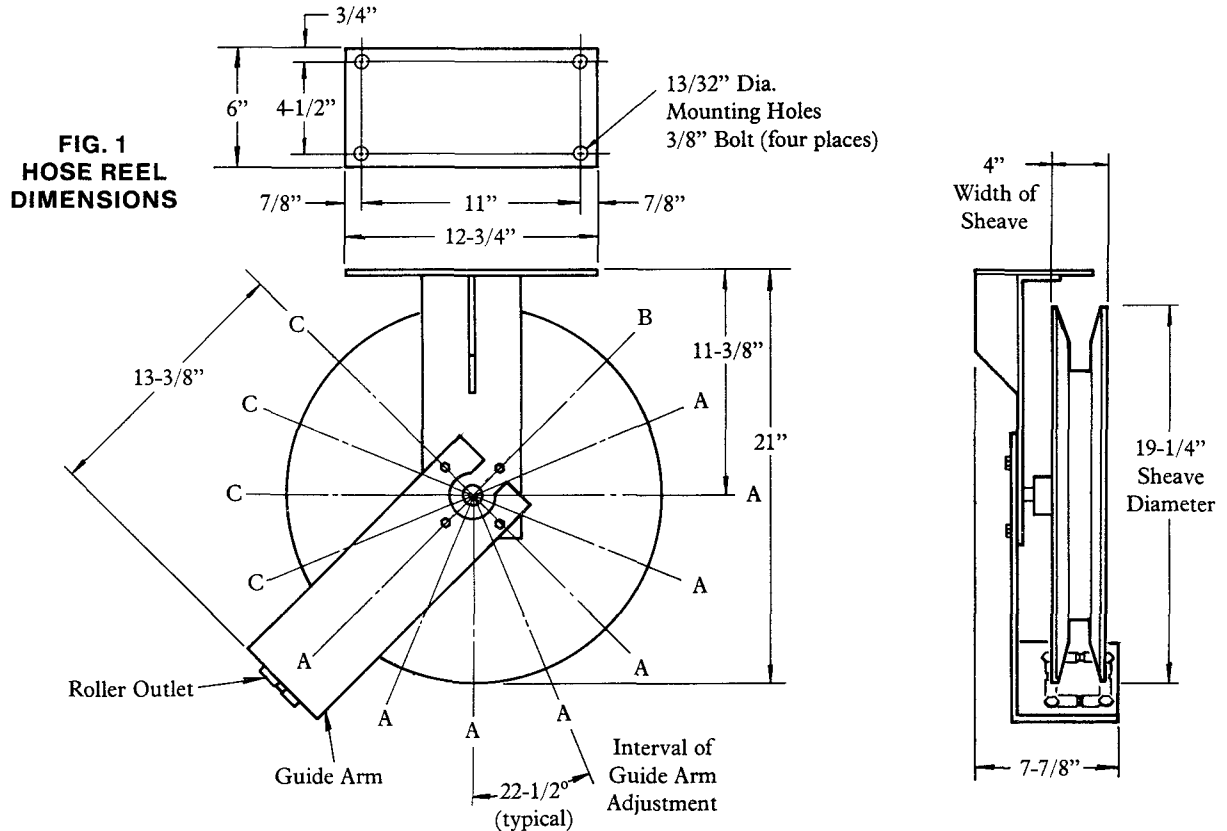


BARE REEL

MAX. WORKING PRESSURE - 1000 PSI

Model 84696

Series "C"

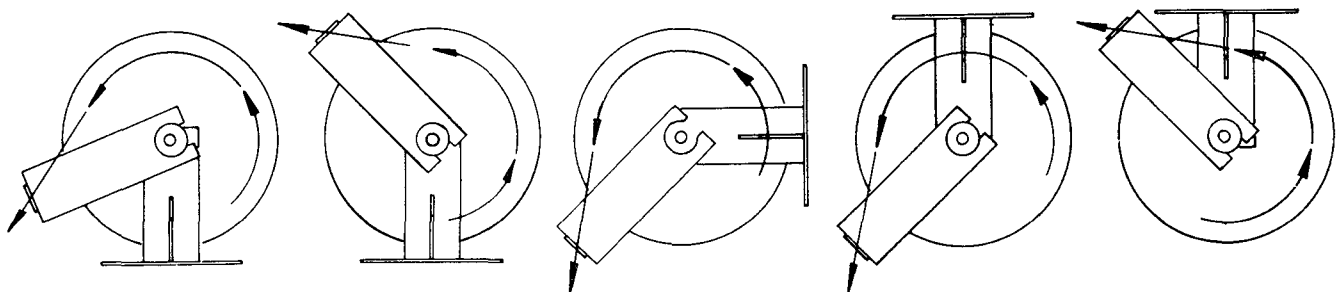


INSTALLATION

The guide arm may be positioned in 22-1/2° increments as shown above. For ease of operation and increased hose life, the guide arm should be positioned to minimize hose flexure as the delivery hose passes through the roller outlet.

Three hex head screws must be used to securely attach the guide arm. The hose clamp must be relocated if the guide arm is in position "B" or "C" in the illustration above. Refer to bare reel drawing for hose clamp locations.

DIAGRAMATIC VIEWS

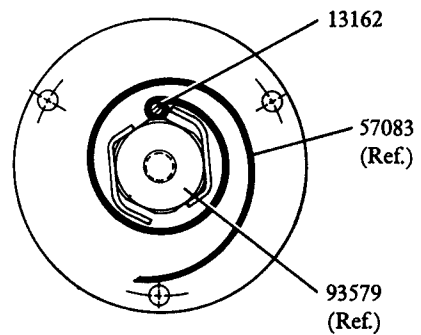


NOTE: Arrow indicates direction of hose as it is withdrawn from hose reel.

LINCOLN
A DIVISION OF
McNEIL CORPORATION

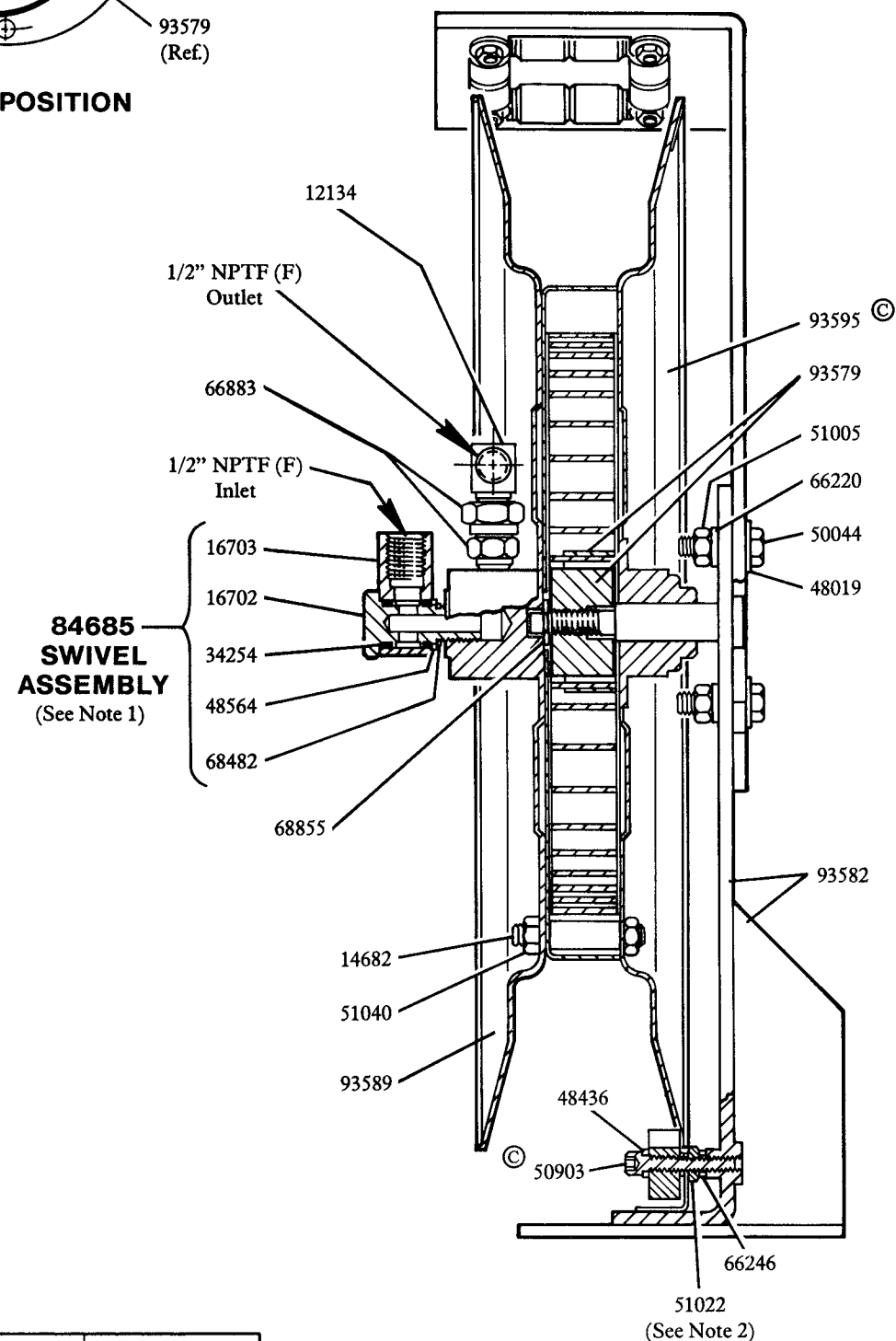
One Lincoln Way
St. Louis, MO 63120-1578
(314) 679-4200

SECTION - **E35**
PAGE - **52B**



SPRING POSITION

Model 84696 BARE REEL



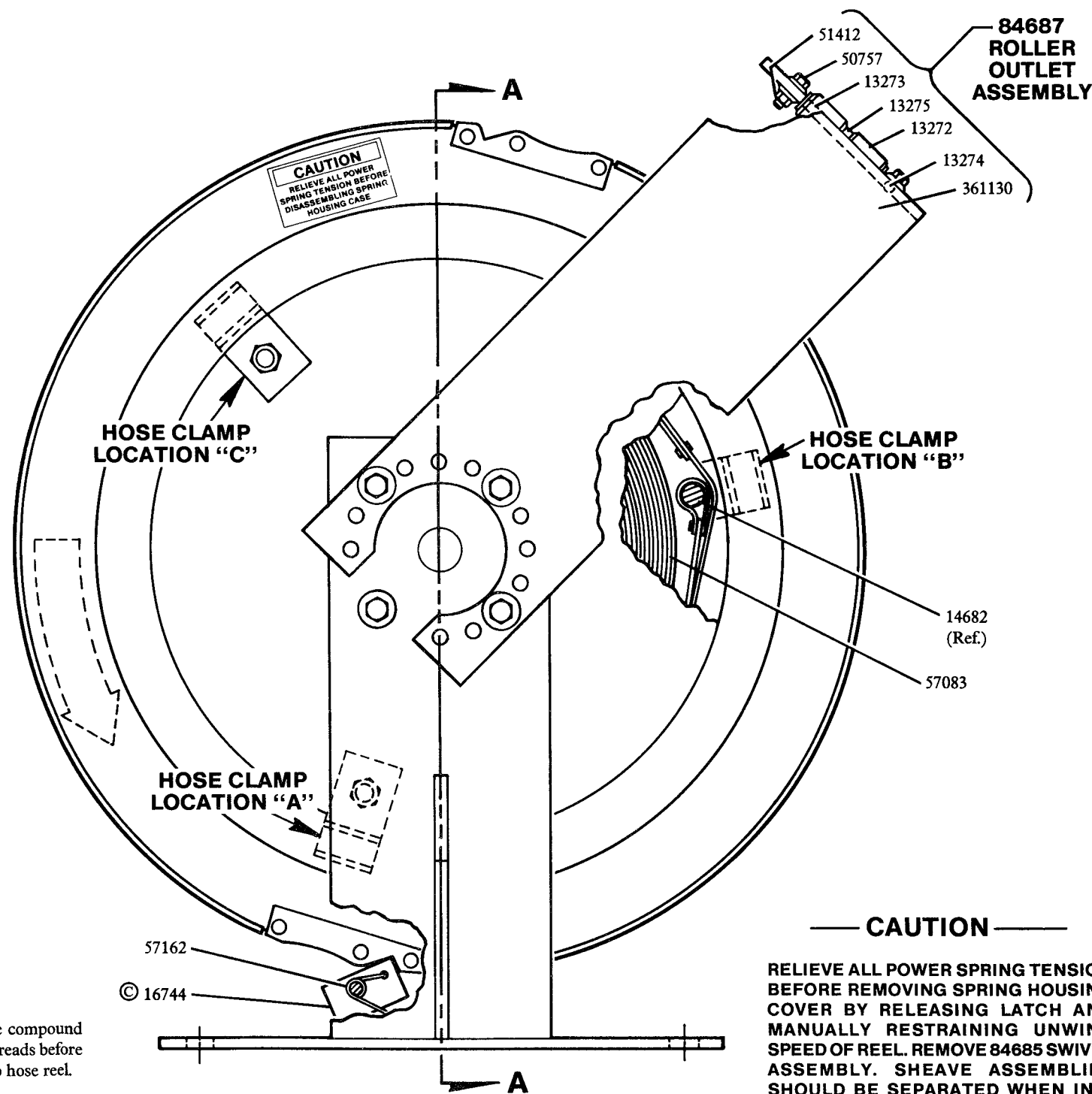
SECTION A-A

HOSE CLAMP	HOSE TYPE
45816	73 & 74
45817	72 & 72A

NOTES:

- 1) Apply Loctite pipe compound to 84685 Swivel threads before installing swivel to hose reel.
- 2) Adjust 51022 Nut so that 16744 Latch is free to move.

© Indicates Change



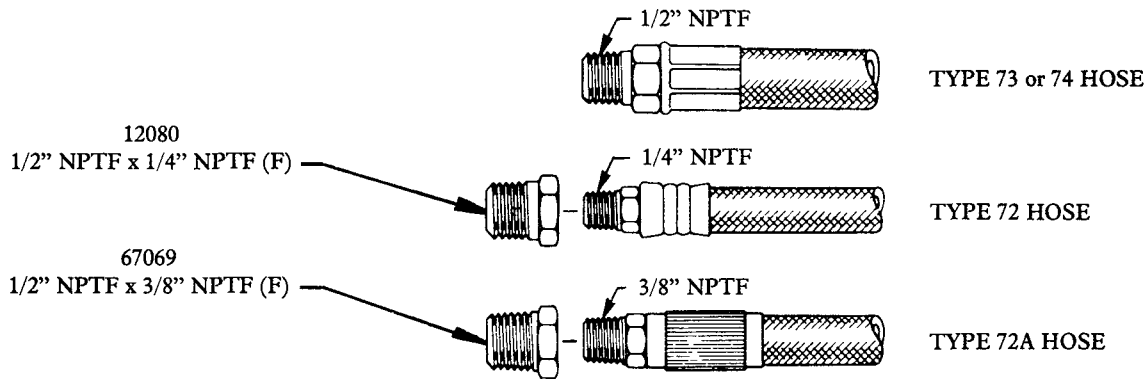
CAUTION

RELIEVE ALL POWER SPRING TENSION BEFORE REMOVING SPRING HOUSING COVER BY RELEASING LATCH AND MANUALLY RESTRAINING UNWIND SPEED OF REEL. REMOVE 84685 SWIVEL ASSEMBLY. SHEAVE ASSEMBLIES SHOULD BE SEPARATED WHEN IN A HORIZONTAL POSITION WITH 93589 SHEAVE DOWN ON A FLAT SURFACE.

NOTE:

The power spring is restrained by a steel retainer band. For added safety, the power spring should be wired securely to the retainer band in at least three places before removal from the spring housing.

**ADAPTERS FOR DELIVERY AND CONNECTING HOSES
NOT FURNISHED WITH BARE REEL - MUST BE ORDERED SEPARATELY**



Cabinet and Mounting Rails:
Refer to Service Manual,
Section E35, Page 38 Series.

SERVICE PARTS

PART	QUAN.	DESCRIPTION	PART	QUAN.	DESCRIPTION
12134	1	Elbow	51022	1	Jam nut
13162	1	Spring pin	51040	6	Locknut
13272	8	Roller	51412	4	Nut
13273	2	Pin	57083	1	Power spring
13274	2	Pin	57162	1	Latch spring
13275	2	Spacer	66220	4	Lockwasher
14682	3	Stud	66246	1	Lockwasher
16702	1	Inlet stud	66883	1	Adapter union
16703	1	Swivel block	68482	1	Retaining ring
16744	1	Latch pawl	68855	1	Retaining ring
34254	2	O-ring	84685	1	Swivel assembly
48019	4	Washer	84687	1	Roller outlet assembly
48436	1	Washer	93579	1	Arbor
48564	1	Washer	93582	1	Support
50044	4	Screw	93589	1	Sheave half
50757	4	Bolt	93595	1	Sheave half
50903	1	Screw	361130	1	Roller support arm
51005	4	Nut			

RETAIN THIS INFORMATION FOR FUTURE REFERENCE

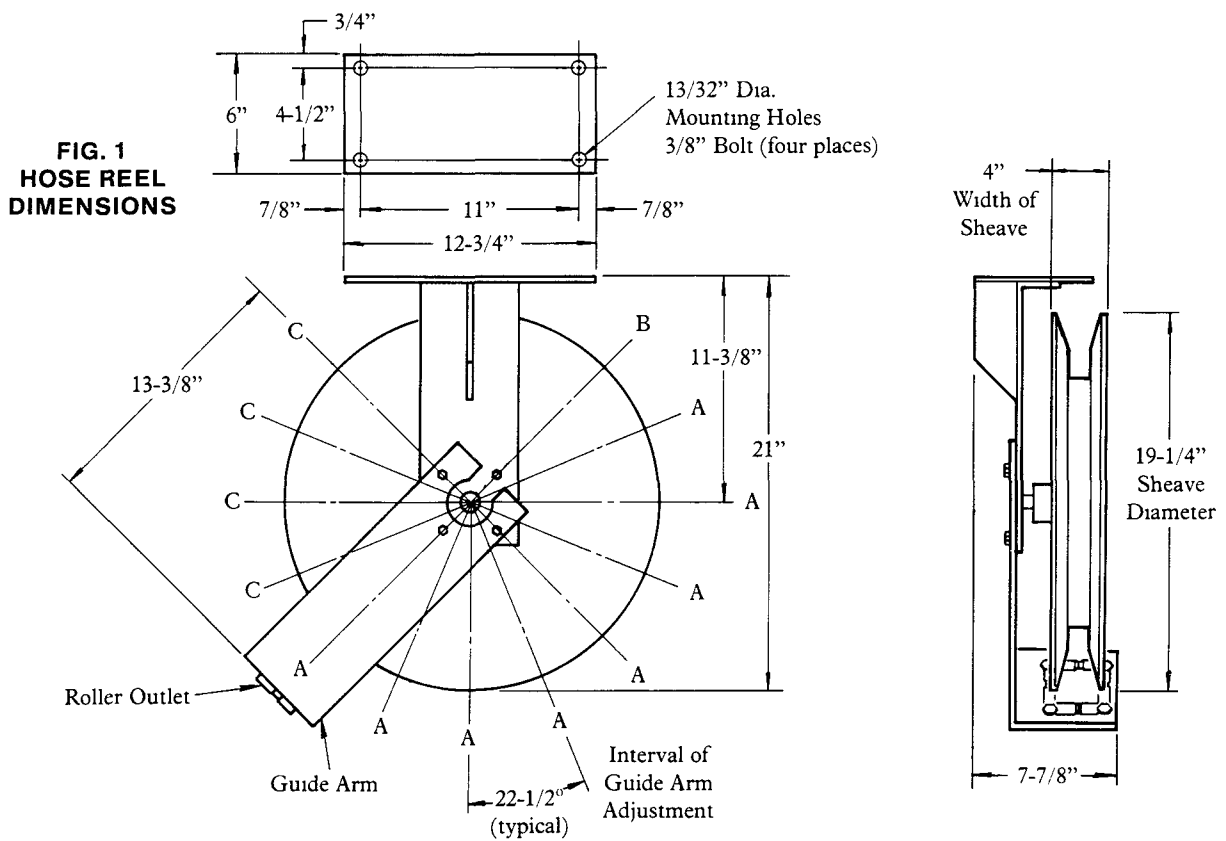
When ordering replacement parts, list: Part Number, Description, Model Number, and Series Letter.

LINCOLN provides a Distributor Network that stocks equipment and replacement parts.
A list of Authorized Service Departments will be furnished upon request.

BARE REEL

Models 84696 84696-1 Series "C"

MAX. WORKING PRESSURE - 1000 PSI

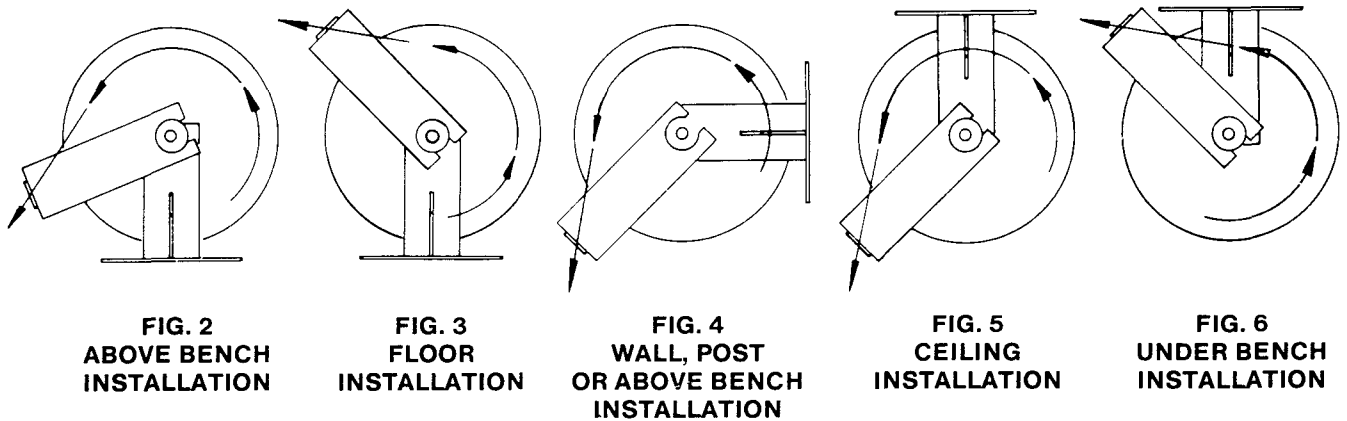


INSTALLATION

The guide arm may be positioned in $22-1/2^\circ$ increments as shown above. For ease of operation and increased hose life, the guide arm should be positioned to minimize hose flexure as the delivery hose passes through the roller outlet.

Three hex head screws must be used to securely attach the guide arm. The hose clamp must be relocated if the guide arm is in position "B" or "C" in the illustration above. Refer to bare reel drawing for hose clamp locations

DIAGRAMATIC VIEWS

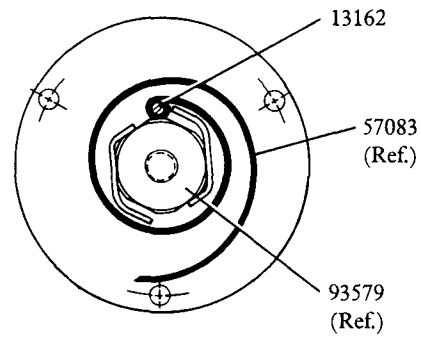


NOTE: Arrow indicates direction of hose as it is withdrawn from hose reel.



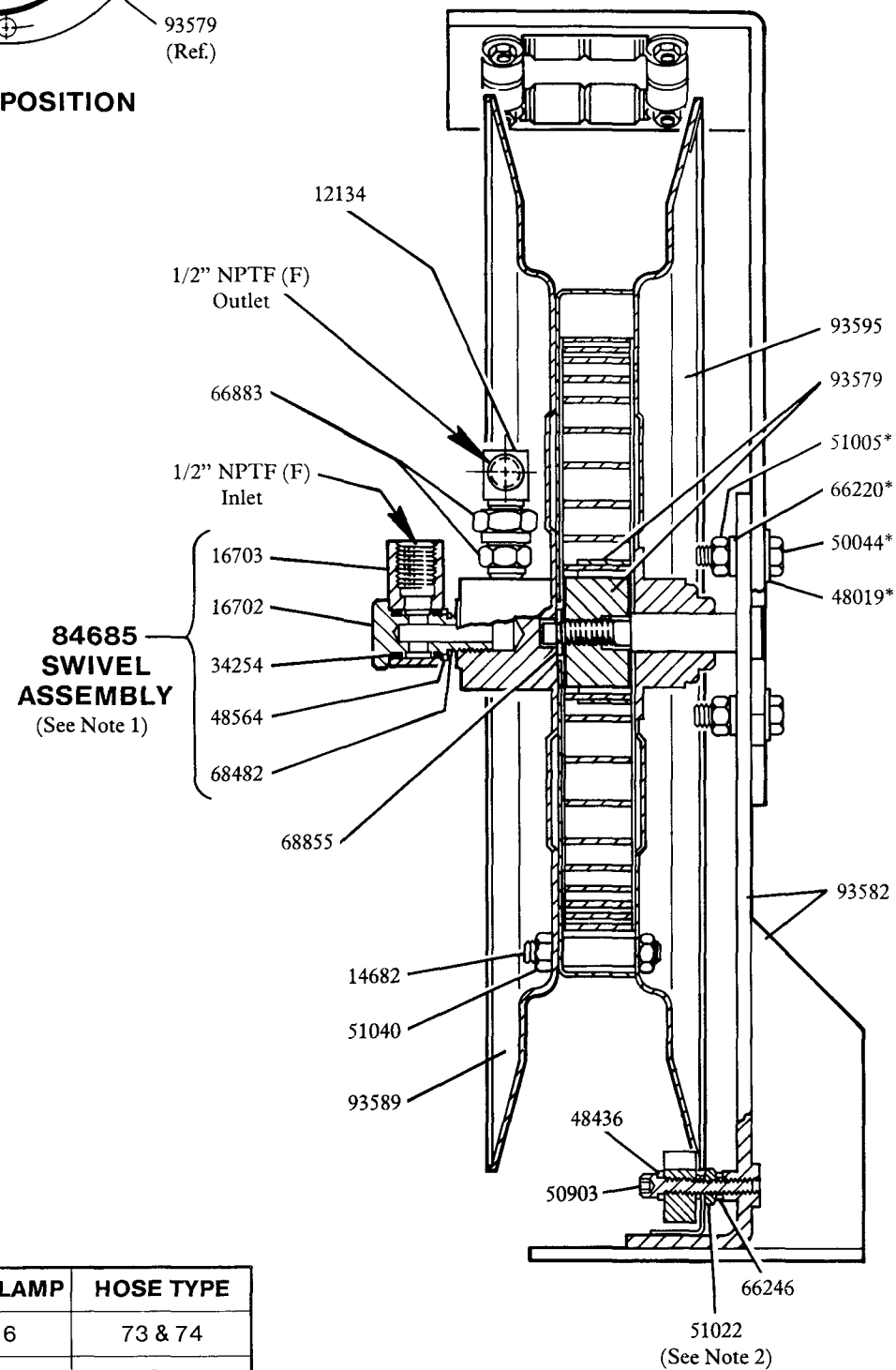
One Lincoln Way St. Louis, Missouri 63120-1578
(314) 679-4200 Telex 44881

SECTION - E35
PAGE - 52C



SPRING POSITION

Models 84696 and 84696-1 BARE REELS

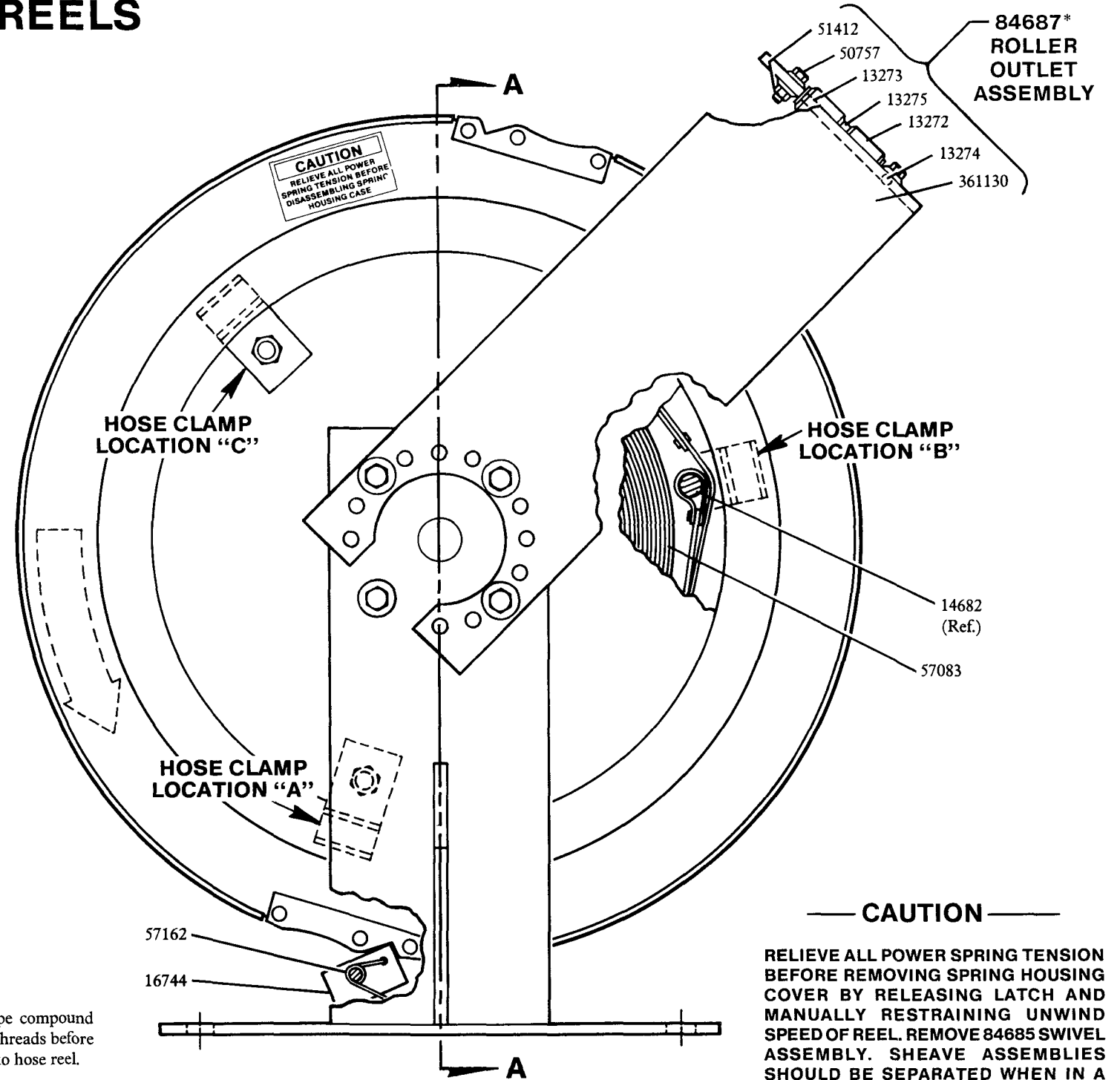


SECTION A-A

*HOSE CLAMP	HOSE TYPE
45816	73 & 74
45817	72 & 72A

NOTES:

- 1) Apply Loctite pipe compound to 84685 Swivel threads before installing swivel to hose reel.
- 2) Adjust 51022 Nut so that 16744 Latch is free to move.
- *3) Indicates parts not included with 84696-1 Bare Reel.



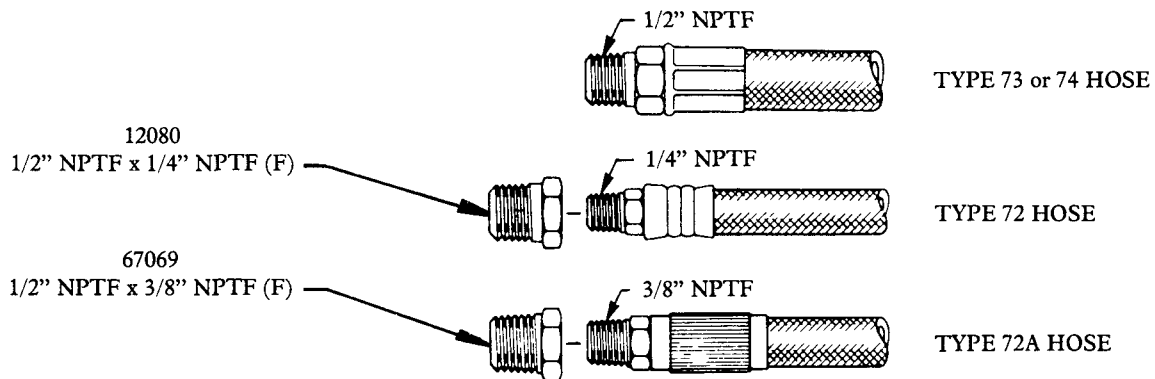
CAUTION

RELIEVE ALL POWER SPRING TENSION BEFORE REMOVING SPRING HOUSING COVER BY RELEASING LATCH AND MANUALLY RESTRAINING UNWIND SPEED OF REEL. REMOVE 84685 SWIVEL ASSEMBLY. SHEAVE ASSEMBLIES SHOULD BE SEPARATED WHEN IN A HORIZONTAL POSITION WITH 93589 SHEAVE DOWN ON A FLAT SURFACE.

NOTE:

The power spring is restrained by a steel retainer band. For added safety, the power spring should be wired securely to the retainer band in at least three places before removal from the spring housing.

**ADAPTERS FOR DELIVERY AND CONNECTING HOSES
NOT FURNISHED WITH BARE REEL - MUST BE ORDERED SEPARATELY**



Cabinet and Mounting Rails:
Refer to Service Manual,
Section E35, Page 38 Series.

SERVICE PARTS

PART	QUAN.	DESCRIPTION	PART	QUAN.	DESCRIPTION
12134	1	Elbow	51022	1	Jam nut
13162	1	Spring pin	51040	6	Locknut
13272	8	Roller	51412	4	Nut
13273	2	Pin	57083	1	Power spring
13274	2	Pin	57162	1	Latch spring
13275	2	Spacer	66220	4	Lockwasher
14682	3	Stud	66246	1	Lockwasher
16702	1	Inlet stud	66883	1	Adapter union
16703	1	Swivel block	68482	1	Retaining ring
16744	1	Latch pawl	68855	1	Retaining ring
34254	2	O-ring	84685	1	Swivel assembly
48019	4	Washer	84687	1	Roller outlet assembly
48436	1	Washer	93579	1	Arbor
48564	1	Washer	93582	1	Support
50044	4	Screw	93589	1	Sheave half
50757	4	Bolt	93595	1	Sheave half
50903	1	Screw	361130	1	Roller support arm
51005	4	Nut			

RETAIN THIS INFORMATION FOR FUTURE REFERENCE

When ordering replacement parts, list: Part Number, Description, Model Number, and Series Letter.

LINCOLN provides a Distributor Network that stocks equipment and replacement parts.
A list of Authorized Service Departments will be furnished upon request.