

**FIG. 1**  
**HOSE REEL**  
**DIMENSIONS**

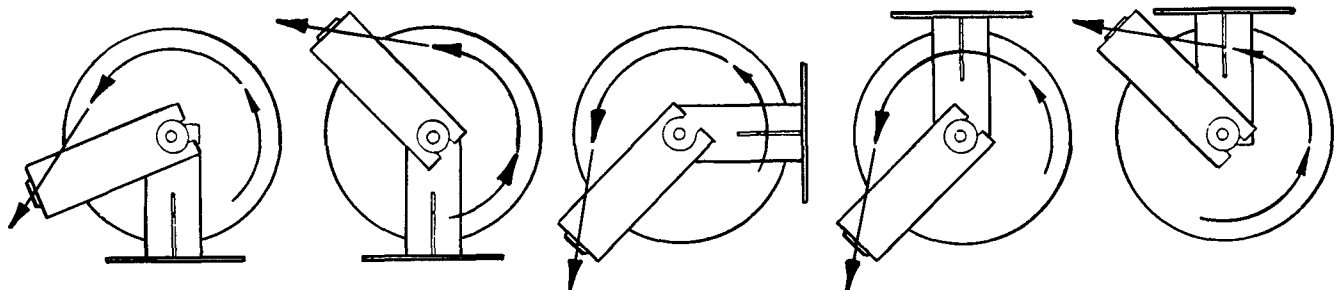
### INSTALLATION

The guide arm may be positioned in  $22\frac{1}{2}^\circ$  increments as shown above. For ease of operation and increased hose life, the guide arm should be positioned to minimize hose flexure as the delivery hose passes thru the roller outlet.

Three studs must be used to securely attach the guide arm. In some cases it may be necessary to change the position of the hex head screw and one stud in order to position the guide arm.

The hose clamp must be relocated if the guide arm is in position "B" or "C" in the illustration above. Refer to Base Reel dwg for hose clamp locations.

### DIAGRAMATIC VIEWS



**FIG. 2**  
**LUBROVAN**  
**INSTALLATION**  
**CONTRACTOR TYPE**

**FIG. 3**  
**FLOOR**  
**INSTALLATION**

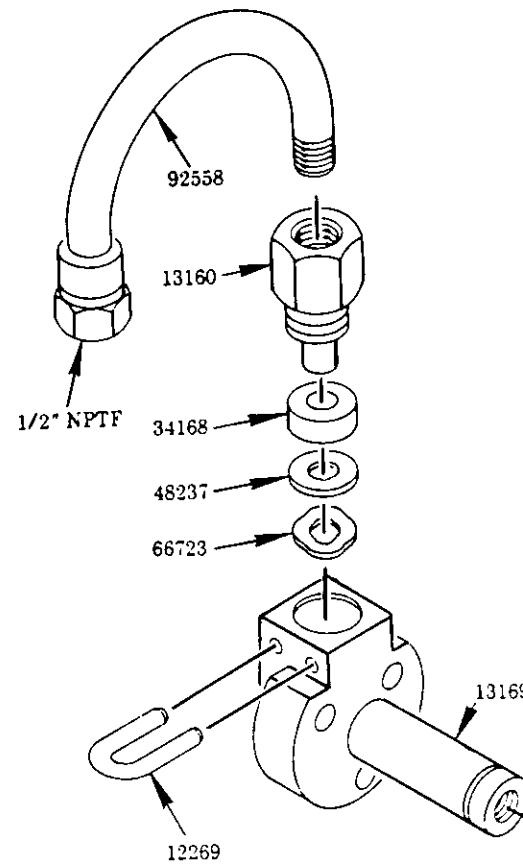
**FIG. 4**  
**WALL, POST**  
**OR ABOVE BENCH**  
**INSTALLATION**

**FIG. 5**  
**CEILING**  
**INSTALLATION**  
**OR FOR USE**  
**WITH LUBREEL**  
**SUPPORT STAND**

**FIG. 6**  
**UNDER BENCH**  
**INSTALLATION**

**NOTE:** Arrow indicates direction of hose as it is withdrawn from hose reel.

# Models 84690 BARE REEL



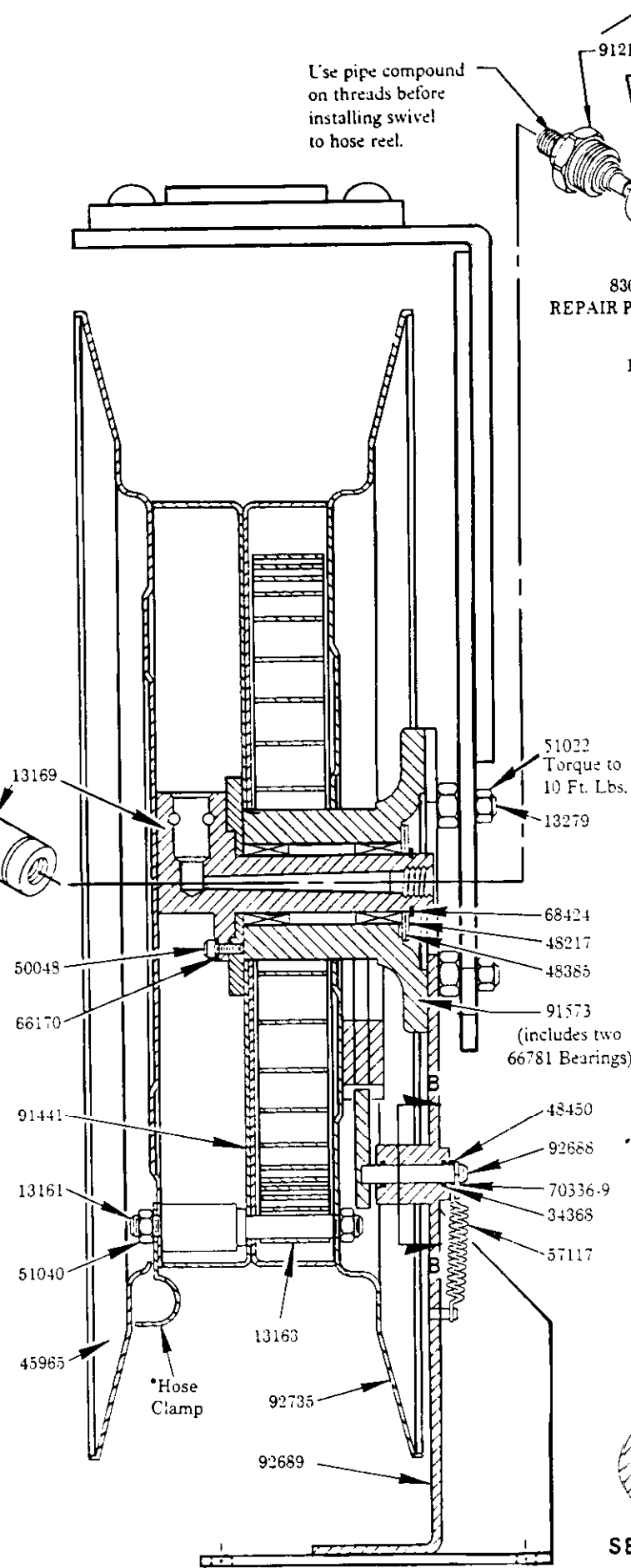
## CAUTION

RELIEVE ALL POWER SPRING TENSION BEFORE REMOVING SPRING HOUSING COVER BY RELEASING LATCH AND MANUALLY RESTRAINING UNWIND SPEED OF REEL. SHEAVE ASSEMBLIES SHOULD BE SEPARATED WHEN IN A HORIZONTAL POSITION WITH 45965 DOWN ON A FLAT SURFACE.

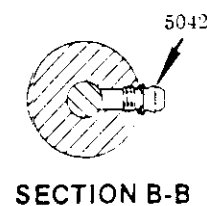
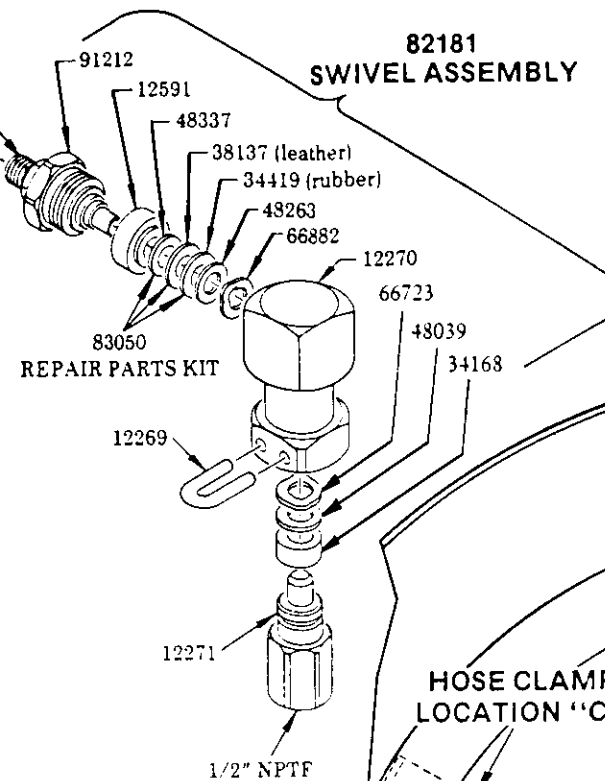
## NOTE:

The power spring is restrained by a steel retainer band. For added safety, the power spring should be wired securely to the retainer band in at least three places before removal from the spring housing.

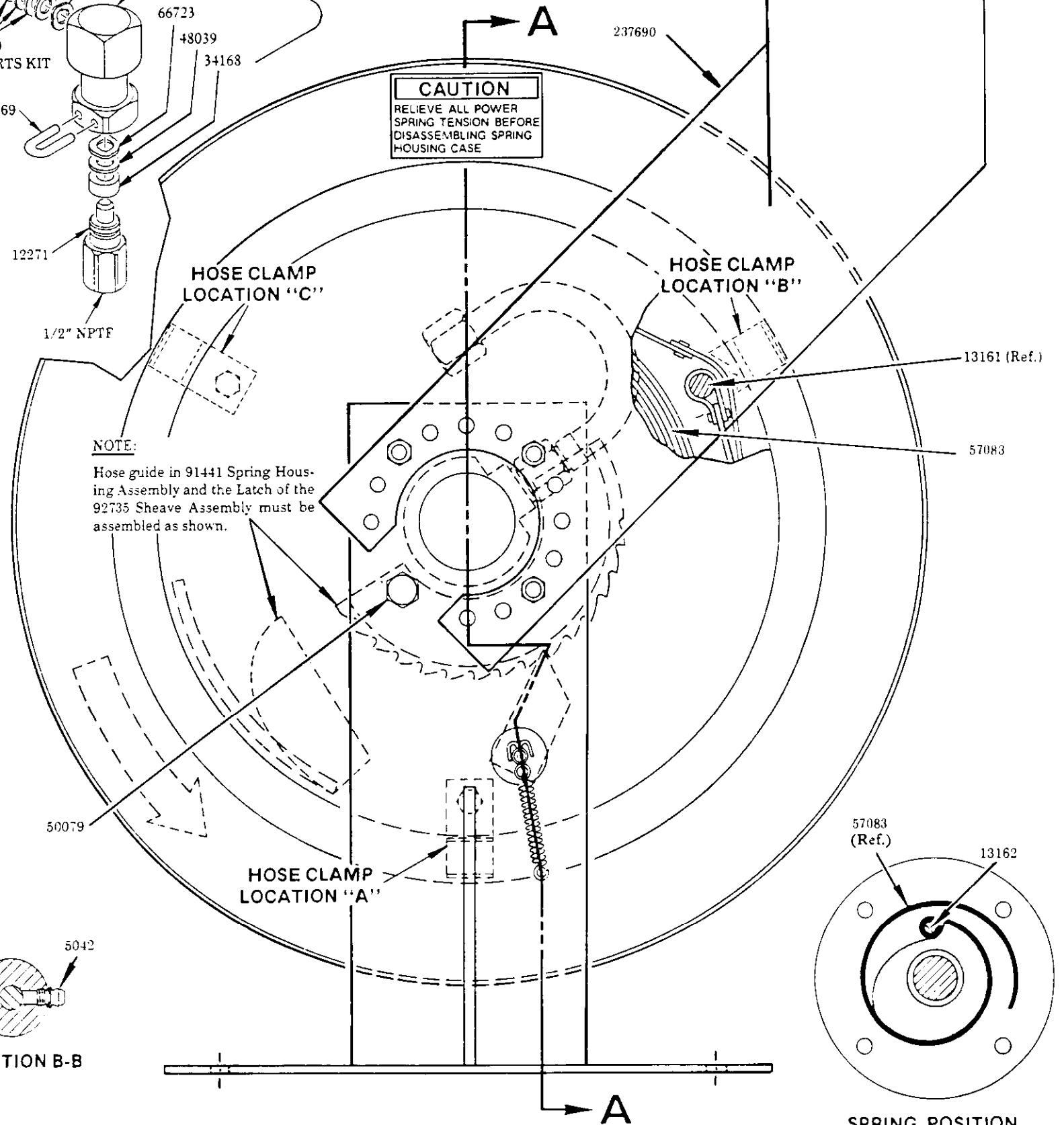
MODEL 84690	
HOSE CLAMP	HOSE TYPE
45816	73
45817	72A & 75



SECTION A-A

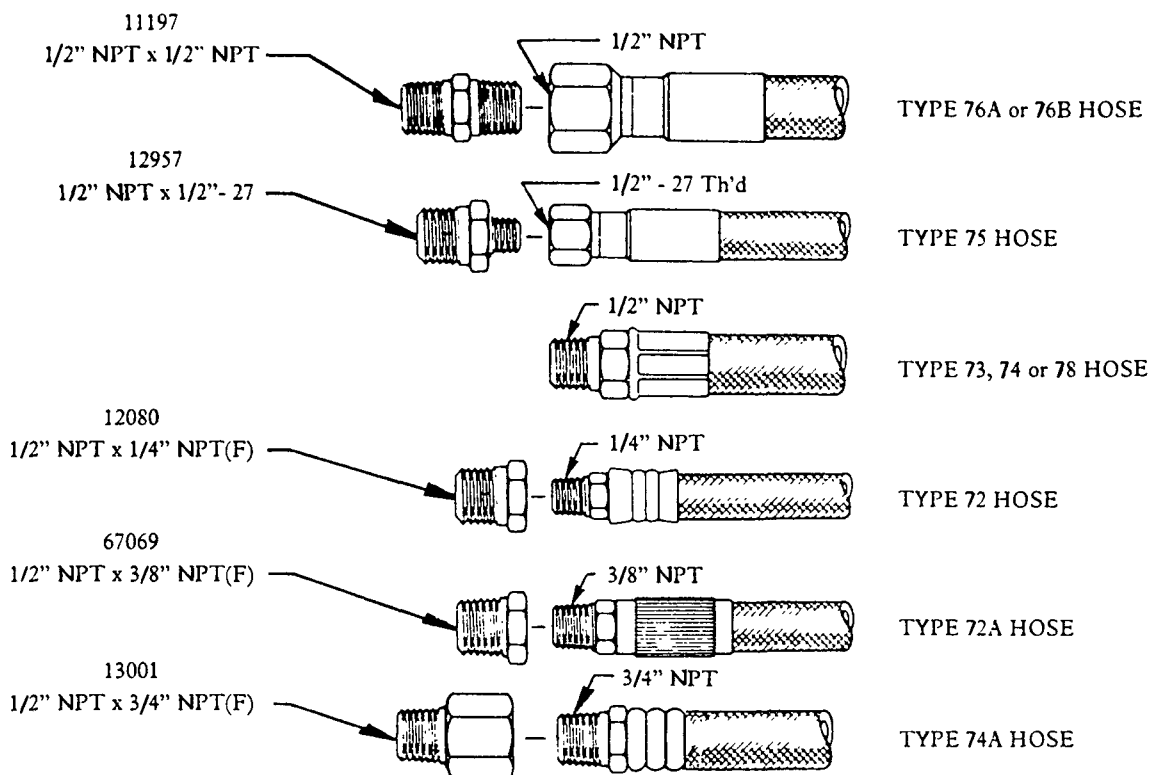


SECTION B-B



SPRING POSITION

**ADAPTERS FOR DELIVERY AND CONNECTING HOSES  
NOT FURNISHED WITH BARE REEL - MUST BE ORDERED SEPARATELY**



**Cabinet and Mounting Rails:**  
Refer to Service Manual,  
Section E35, Page 38 Series.

**SERVICE PARTS**

PART	QUAN.	DESCRIPTION	PART	QUAN.	DESCRIPTION
5042	1	Lube fitting	48450	1	Washer
12269	2	Keeper	50048	3	Screw
12270	1	Swivel body	50079	1	Screw
12271	1	Adapter	51022	3	Nut
12591	1	Retainer	51040	6	Nut
13160	1	Adapter	57083	1	Spring
13161	3	Stud	57117	1	Spring
13162	1	Spring pin	66170	3	Lockwasher
13163	3	Spacer	66723	2	Spring washer
13169	1	Shaft	66781	2	Bearing
13279	3	Stud	66882	1	Spring washer
34168	2	Packing	68424	1	Retaining ring
34368	2	O-ring	70336-9	1	Cotter pin
34419	1	Packing (rubber)	82181	1	Swivel assembly
38137	1	Packing (leather)	91212	1	Swivel stud
45816	1	Hose clamp	91441	1	Spring housing
45817	1	Hose clamp	91573	1	Arbor
45965	1	Sheave half	92558	1	Tube & adapter
48039	1	Washer	92688	1	Pawl
48217	1	Washer	92689	1	Support assembly
48237	1	Washer	92735	1	Sheave
48263	1	Washer	237690	1	Roller support arm
48337	1	Washer	237692	1	Roller housing
48385	4	Shim washer			

**RETAIN THIS INFORMATION FOR FUTURE REFERENCE**

When ordering replacement parts, list: Part Number, Description, Model Number, and Series Letter.

LINCOLN provides a Distributor Network that stocks equipment and replacement parts.

A list of Authorized Service Departments will be furnished upon request.