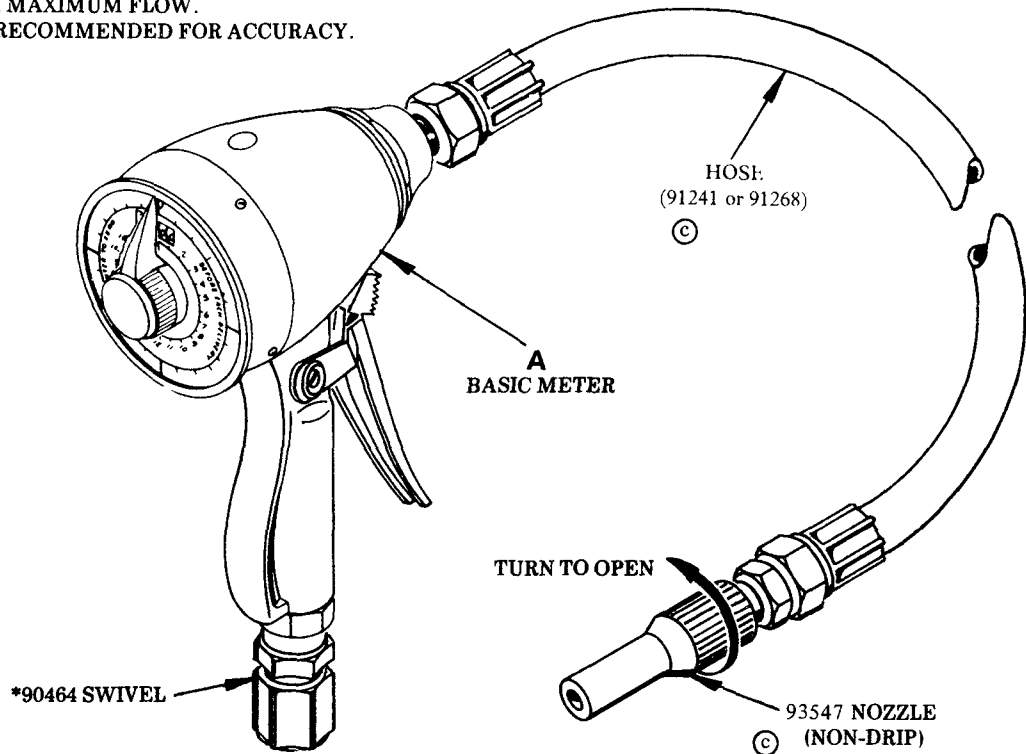
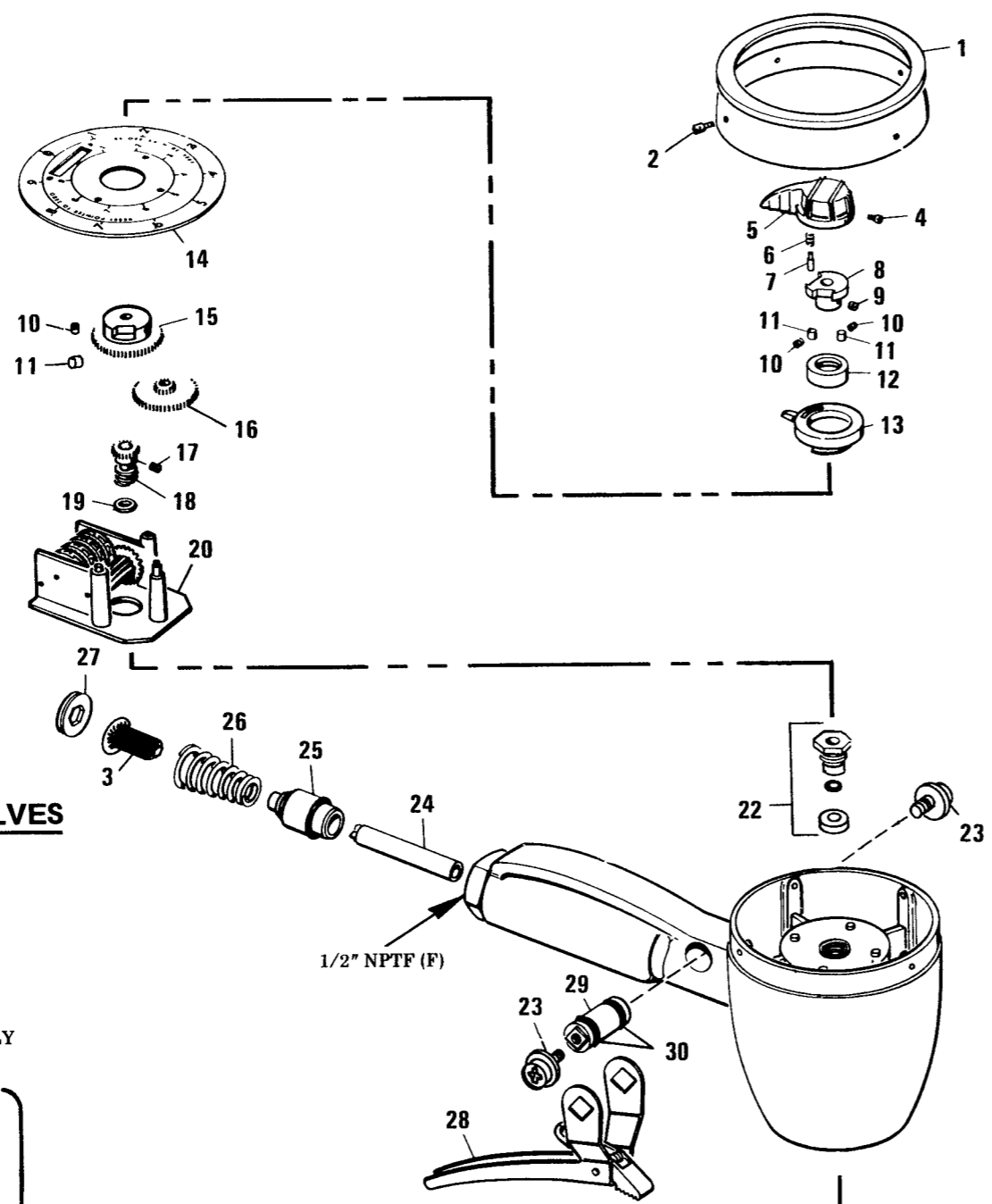


1000 PSI MAXIMUM OPERATING PRESSURE
AND 4 GPM MAXIMUM FLOW.
2-1/2 GPM RECOMMENDED FOR ACCURACY.



© Indicates change

MODEL	USE	MEASURE	A	NOZZLE ASSEMBLY	
883	A.T.F.	Quart	68410	82415	
				93547 ©	91268 (20" Long)
877 899 867	OIL	Quart Litre Gallon	68410 70502 68499	82258	
				93547 ©	91241 (12" Long)

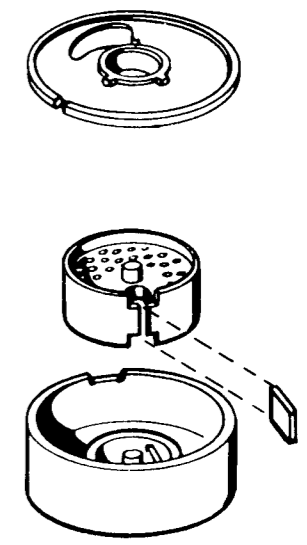
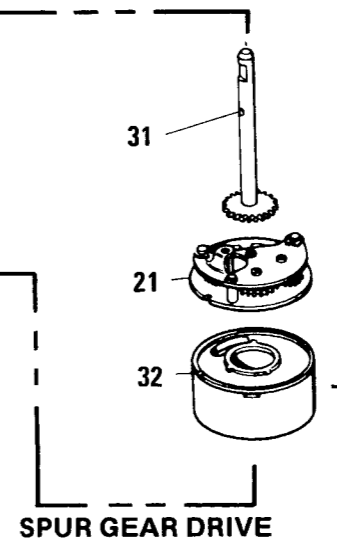
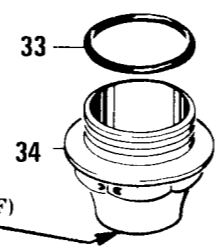
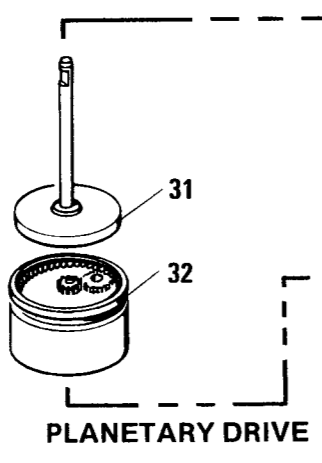
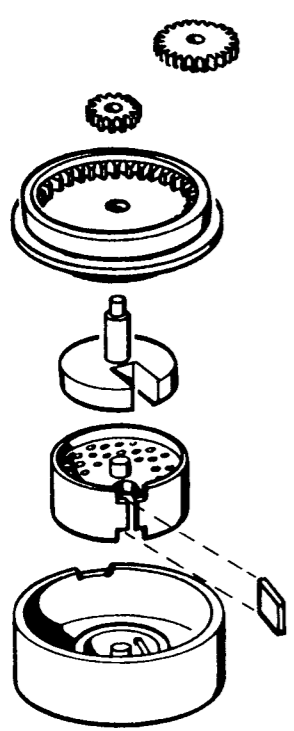


METERING CONTROL VALVES

IMPORTANT:
 BEFORE METER CAN BE PLACED IN SERVICE "AFTER REPAIR",
 METER MUST BE TESTED AND APPROVED IN ACCORDANCE WITH
 U.S. GOVERNMENT'S WEIGHTS AND MEASURES STANDARDS.

ASSEMBLY ORDER
 PARTS NOT AVAILABLE SEPARATELY

ASSEMBLY ORDER
 PARTS NOT AVAILABLE SEPARATELY



ITEM	DESCRIPTION	MODEL			
		877	883	867	899
		U.S. QUARTS (OIL)	U.S. QUARTS (A.T.F.)	U.S. GALLONS (OIL)	LITRES (OIL)
1	Shroud	*68410-12			
2	Shroud screw	*66871-5 (4)			
3	Screen	*68410-27			
4	Set screw	*66871-1			
5	Reset knob	*66871-123			
6	Spring	*66871-8			
7	Pin	*66871-9			
8	Reset lock cam	*66871-95			
9	Set screw	*50540			
10	Clutch spring	*66871-3 (3)			
11	Clutch roller	*66871-4 (3)			
12	Clutch retaining sleeve	*66871-98			
13	Inner circle pointer	*66871-53			
14	Dial & window assembly	68410-26	68410-26	68499-31	69235
15	Inner circle pointer cam	66871-50	66871-50	68499-30	68499-30
16	Inner circle pointer gear	66871-17	66871-17	68499-29	66871-134
17	Set screw	50541 (2)	50541 (2)	50541 (2)	50541 (2)
18	Upper driving pawl worm gear	66871-54	66871-54	69689-1	68602-7
19	Spacer	*69309-23			
20	Register assembly	69795-3	69795-3	68602-8	68602-8
21	Spur gear train assembly	NA	NA	NA	66871-136
22	Packing kit	*237388			
23	Screw	*68410-2 (2)			
24	Valve sleeve assembly	*68410-6			
25	Valve seat assembly	*68410-25			
26	Spring	*68410-10			
27	Spring retainer	*68410-11			
28	Valve trigger assembly	*68410-1			
29	Cam	*68410-5			
30	O-ring	*68410-4 (2)			
31	Upper driving pawl gear assembly	66871-111	66871-111	66871-111	66871-138
32	Chamber & piston assembly	68410-15	68410-15	68410-15	66871-150
33	Housing cap gasket	*66871-12			
34	Housing cap	*68410-14			

GEAR DRIVE	PLANETARY	PLANETARY	PLANETARY	SPUR
TOTALIZING				

* Part Number Typical For All Models Listed.
Quantity Indicated In Parenthesis.

RETAIN THIS INFORMATION FOR FUTURE REFERENCE

When ordering replacement parts, list: Part Number, Description, Model Number, and Series Letter.

LINCOLN provides a Distributor Network that stocks equipment and replacement parts.

Service pages will be furnished upon request.

*