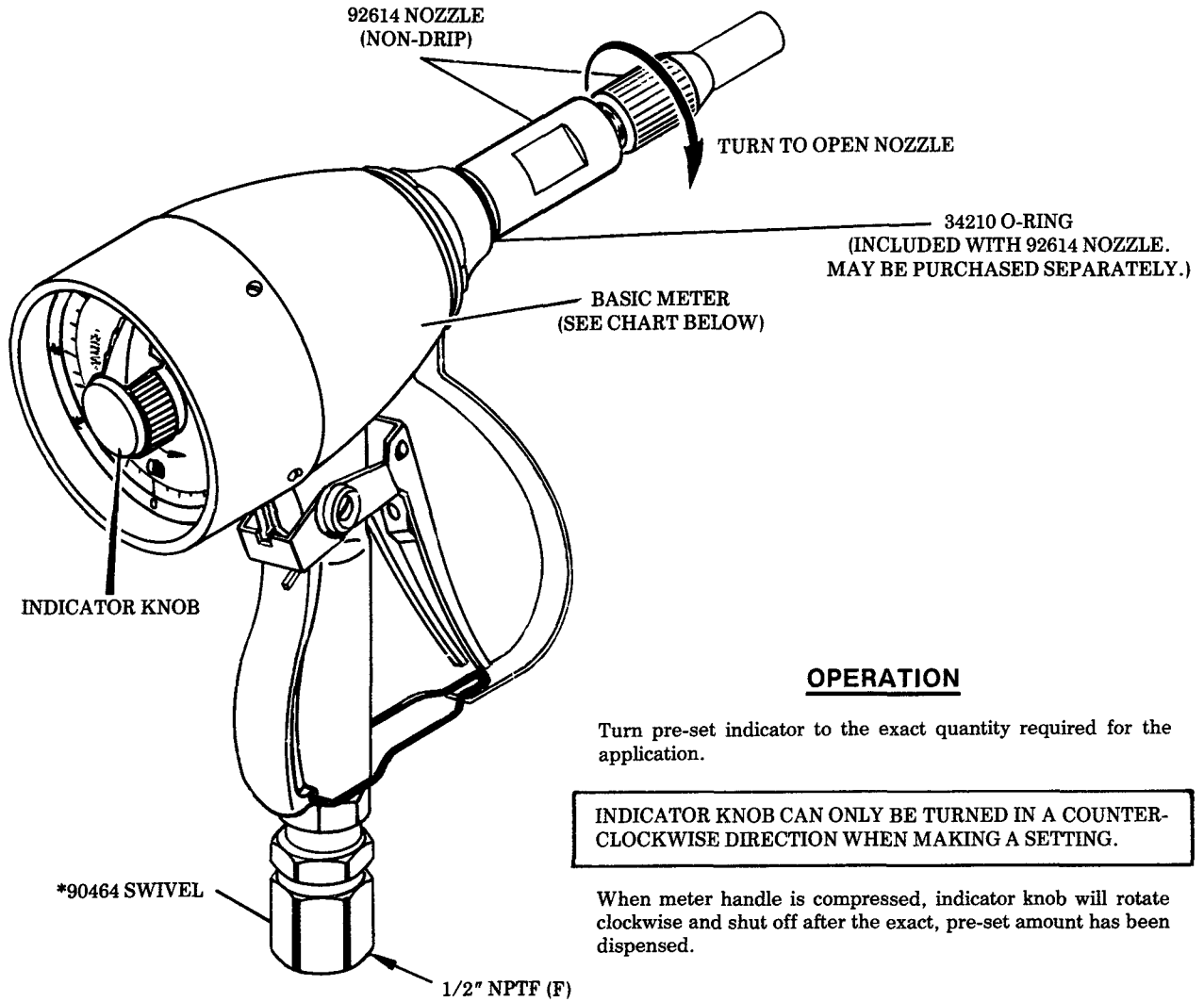


**PRE-SET
TOTALIZING
1000 PSI MAX. OPERATING PRESSURE**

METERING CONTROL VALVES



OPERATION

Turn pre-set indicator to the exact quantity required for the application.

INDICATOR KNOB CAN ONLY BE TURNED IN A COUNTER-CLOCKWISE DIRECTION WHEN MAKING A SETTING.

When meter handle is compressed, indicator knob will rotate clockwise and shut off after the exact, pre-set amount has been dispensed.

* Refer to Service Page,
Section F-1, Page 2 Series.

MODEL	USE	MEASURE	BASIC METER
3867	OIL	QUART	69304
3868		GALLON	70246
3942		LITRE	69795

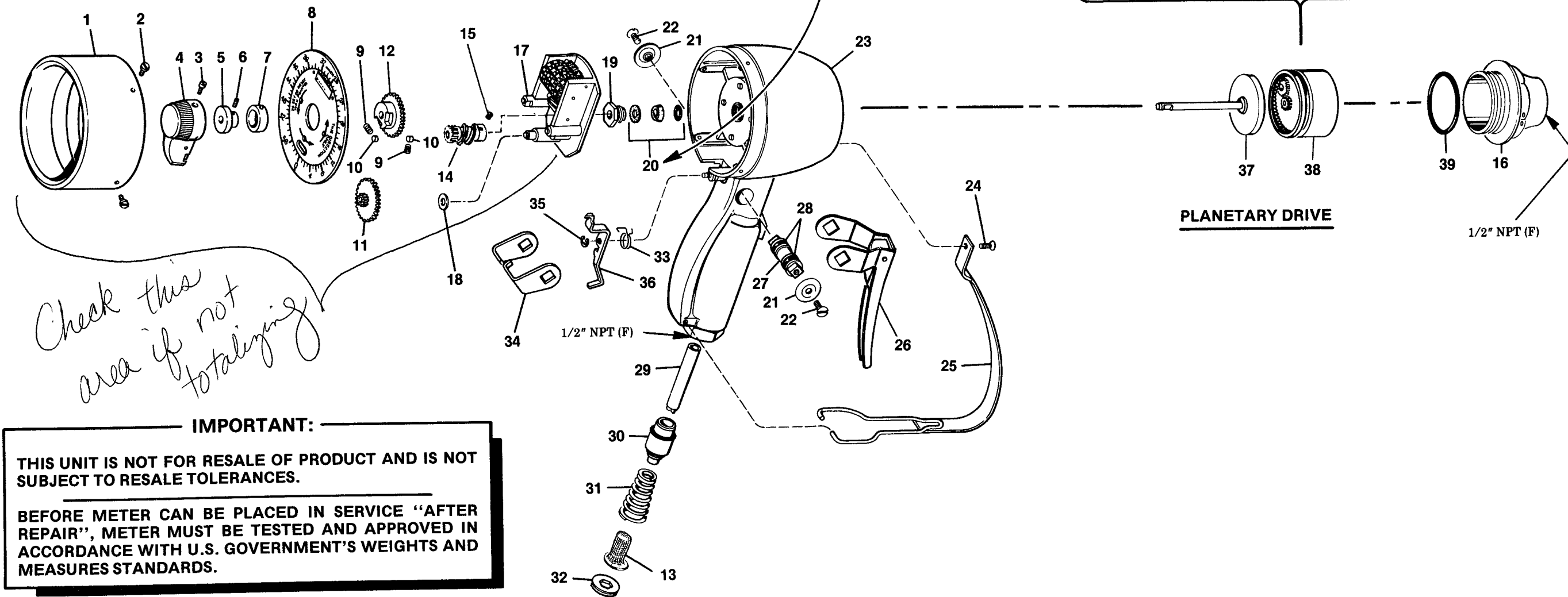
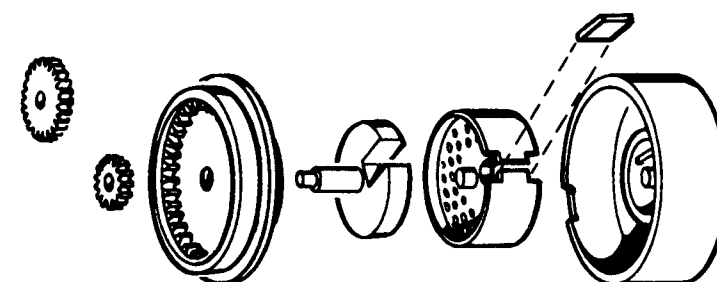
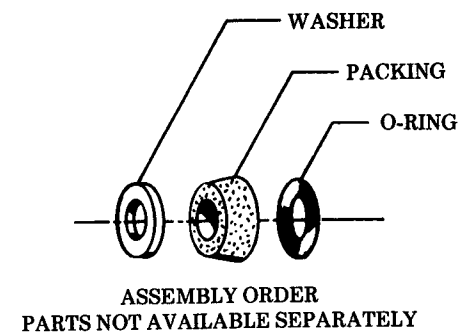
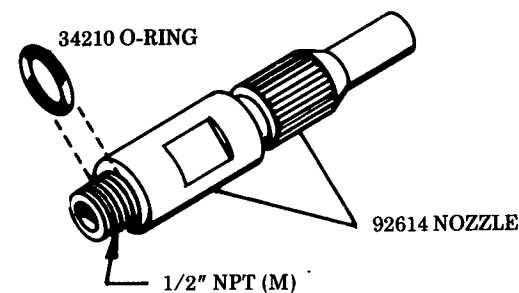
LINCOLN  **McNEIL**
A DIVISION OF
CORPORATION
One Lincoln Way, St. Louis, MO 63120 (314) 679-4200

SECTION - F21
PAGE - 17D

IF OIL CONTINUES TO LEAK FROM NOZZLE TIP AFTER THE VALVE TRIGGER IS RELEASED:

Oil is by-passing ITEM 30 Valve Seat Assembly. Replace part if worn or damaged. To remove valve seat assembly, disconnect delivery hose and 90464 Swivel from control valve. Unscrew ITEM 32 Spring Retainer and remove ITEM 31 Spring.

Oil may also be by-passing 34210 O-ring located between the 92614 Nozzle and the 68410-14 Cap (ITEM 40). Replace o-ring if worn or damaged.



IMPORTANT:

THIS UNIT IS NOT FOR RESALE OF PRODUCT AND IS NOT SUBJECT TO RESALE TOLERANCES.

BEFORE METER CAN BE PLACED IN SERVICE "AFTER REPAIR", METER MUST BE TESTED AND APPROVED IN ACCORDANCE WITH U.S. GOVERNMENT'S WEIGHTS AND MEASURES STANDARDS.

BASIC METER (TOTALIZING)

ITEM	DESCRIPTION	MODEL		
		3867	3868	3942
		U.S. QUARTS (OIL)	U.S. GALLONS (OIL)	LITRES (OIL)
1	Shroud	*68410-12		
2	Shroud screw	*66871-5 (4)		
3	Set screw	*66871-1		
4	Preset knob	*69304-16		
5	Preset knob retainer	*69304-15		
6	Set screw	*50540		
7	Preset knob retaining sleeve	*66871-98		
8	Dial & window assembly	69303	70247	69795-1
9	Clutch spring	*66871-3 (2)		
10	Clutch roller	*66871-4 (2)		
11	Compound gear assembly	*69304-9		
12	Preset knob drive cam	*69304-10		
13	Screen	*68410-27		
14	Worm assembly	66871-157	69428-15	69795-2
15	Set screw	*50541		
16	Cap	*68410-14		
17	Register assembly	68602-8	68602-8	69795-3
18	Washer	*69304-23		
19	Packing box gland nut	*66871-23		
20	Packing kit	66871-33	69428-12	66871-33
21	Washer	*68410-3 (2)		
22	Screw	*68410-2 (2)		
23	Housing	*69304-1		
24	Screw	*69304-22		
25	Hand guard	*69304-21		
26	Trigger assembly	*69304-4		
27	Cam	*69304-2		
28	Quad ring	68410-4 (2)	69428-2 (2)	68410-4 (2)
29	Valve sleeve assembly	*68410-6		
30	Valve seat assembly	68410-25	69428-25	68410-25
31	Spring	*69304-3		
32	Spring retainer	*68410-11		
33	Lock pawl spring	*69304-12		
34	Lock bar	*69304-5		
35	E-ring	*69304-14		
36	Lock pawl	*69304-13		
37	Upper driving pawl gear assembly	69304-6	70246-1	69795-4
38	Chamber & piston assembly	68410-15	68410-15	69795-5
39	O-ring	66871-12	69428-11	66871-12
	GEAR DRIVE	PLANETARY	PLANETARY	PLANETARY

* Part Number Typical For All Models Listed.

Quantity Indicated In Parenthesis.

RETAIN THIS INFORMATION FOR FUTURE REFERENCE

When ordering replacement parts, list: Part Number, Description, Model Number, and Series Letter.

LINCOLN ST. LOUIS provides a Distributor Network that stocks equipment and replacement parts.
A list of Authorized Service Departments will be furnished upon request.