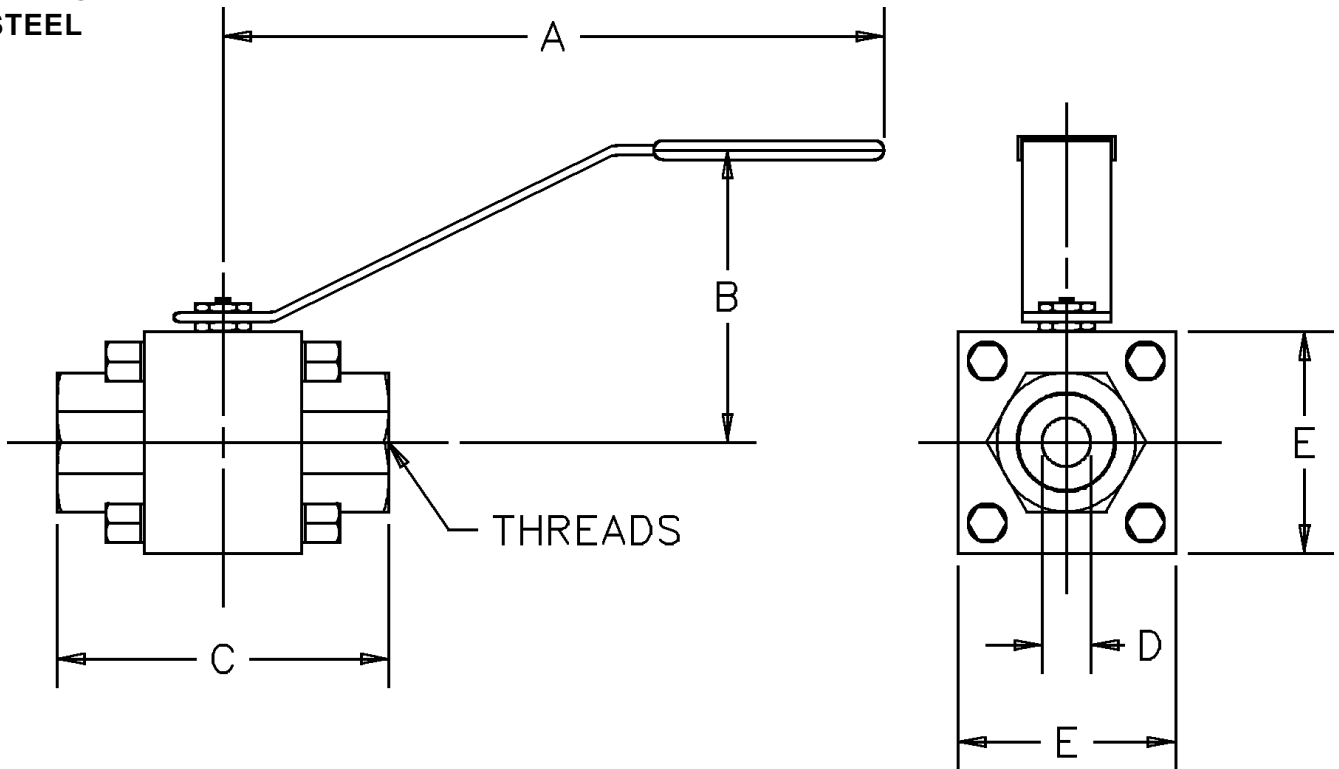


CARBON  
 STEEL



Model	Cv Capacity@ 1 PSIG	A	B	C	D	E	Threads	Working Pressure
69503	8 GPM	5.98	2.64	2.95	0.44	1.97	1/2 NPT	3000 PSI
69425	13 GPM	5.98	2.76	3.15	0.56	2.09	3/4 NPT	3000 PSI
69423	32 GPM	7.60	3.15	3.94	0.83	2.60	1 NPT	3000 PSI
69422	82 GPM	8.86	4.25	4.72	1.25	3.35	1 1/2 NPT	2500 PSI

Cv is a flow coefficient for valves. It expresses valve capacity in terms of the flow rate in GPM of 60° F water with a one PSI pressure drop across the valve.