

GENERAL

The Lincoln electronic lube meter is designed specifically to dispense motor oils (S.A.E. 5-50), gear oils (S.A.E. 80-240), automatic transmission fluid, and pure antifreeze (Ethylene Glycol). Modular design, low cost, lightweight and rugged design make the OGQ the economical choice for overhead reel systems.

The electronic register module contains a microprocessor board powered by a lithium battery with an expected life of 3 to 5 years depending on use. The unit is programmed at the factory to dispense and totalize in Quarts. A 5-digit liquid crystal display, accurate to the second decimal place, shows the exact amount of fluid dispensed. The entire register module is protected from the wear and tear of normal shop use by a rugged, glass filled, shock resistant, nylon housing.

OPERATION

As fluid passes through the metering chamber by entering the inlet port, it forces the internal gears to rotate and exits through the outlet port. Each rotation of the gear displaces a given volume of fluid. Controlled clearances between the gears and chamber wall insure minimum leakage. As the gears rotate, a magnet on each end of the gear activates the microprocessor in the register.

Depressing the RESET button before each use resets the totalizer to zero. Squeezing the trigger handle dispenses the fluid.

The total amount of fluid dispensed from inventory can be checked periodically by depressing the TOTAL button.

METER IS NOT FOR RESALE MEASUREMENT OF FLUID.

⚠ CAUTION

Please ensure that the fluid is properly filtered before entering meter. Foreign particles will cause inaccuracy as well as malfunction of meter.



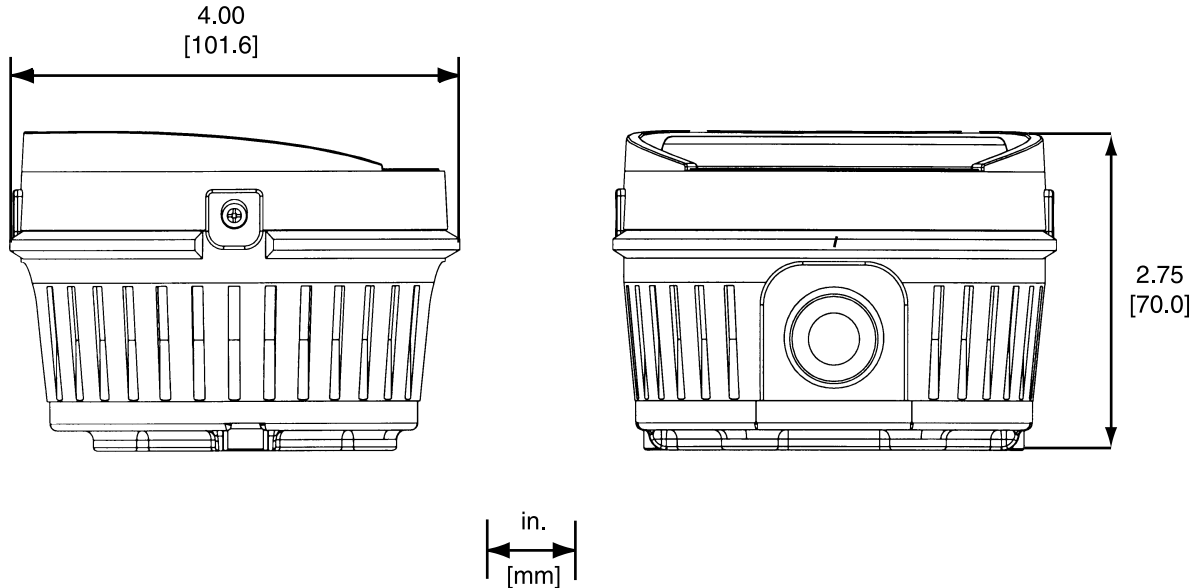
FEATURES

- Oval Gear Driven Meter
- Large LCD Display
- Two Decimal Point Precision
- Totalization in Quarts
- Delivery in Quarts
- Accuracy to $\pm 1.5\%$
- Minimum Three Year Battery Life
- Low Battery Indicator
- Battery Shelf Life — 10 Years
- Removeable Battery
- Inline Filter in Handle

Model 952 Consists of:

P/N	Description
282836	OGQ Meter
282843	90 Flex Hose & Swivel
282844	Handle
282839	Rubber Boot

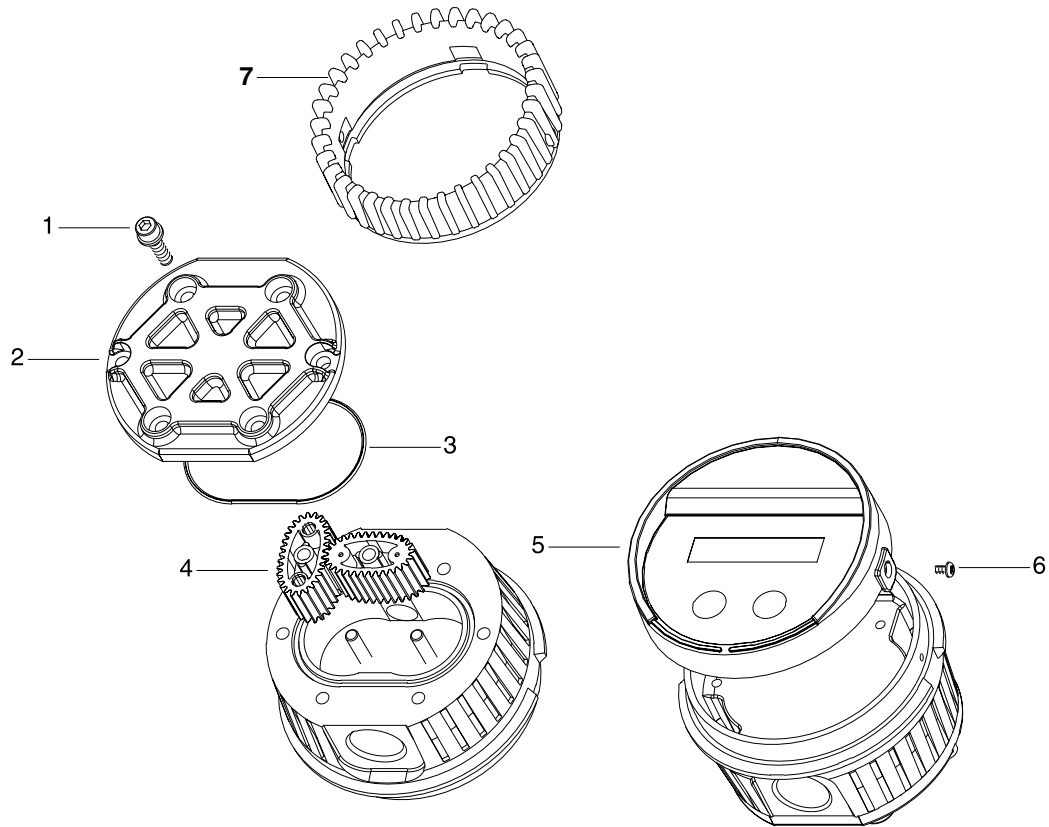
Dimensional Drawing



SPECIFICATIONS

	English
Maximum Flow*	6.0 gpm
Minimum Flow*	0.25 gpm
Operating Pressure (Maximum)	1500 psi
Operating Pressure (Minimum)	5 psi
Operating Temperature (Maximum)	110° F
Operating Temperature (Minimum)	-10° F
Accuracy	±1.5%
Weight, Less Handle / With Handle	2.0 lbs.
5-Digit LCD Display, 5/16" High	Quarts
Inlet and Outlet Connections	1/2" NPT

* Tested with Mobil DTE-25 motor oil at ambient temperature.
 Min.-Max. flow rates will vary with fluid viscosity.



ITEM	DESCRIPTION	PART NO.
1	(6) Screw, Sems Type	282845
2	Housing Cover	282846
3	O-Ring	282847
4	Gear Service Kit with O-Ring, Non-Approved:	282849
5	Register Module, Non-Approved	282850
6	(3) Screw	282851
7	Rubber Boot	282839
8	Battery (Not Shown) 3V Lithium Battery- CR 1/2 AA	282852

(This page intentionally left blank)

Americas
One Lincoln Way
St. Louis, MO 63120-1578
USA
Phone +1 314 679 4200
Fax +1 800 424 5359

Europe/Africa
Heinrich-Hertz-Str 2-8
D-69183 Walldorf
Germany
Phone +49 6227 33 0
Fax +49 6227 33 259

Asia/Pacific
25 Int'l Business Park
#01-65 German Centre
Singapore 609916
Phone +65 562 7960
Fax +65 562 9967

Printed in USA

Website
www.lincolnindustrial.com