

GENERAL

The Lincoln electronic lube meter is designed specifically to dispense motor oils (S.A.E. 5-50), gear oils (S.A.E. 80-240), automatic transmission fluid, and pure antifreeze (Ethylene Glycol). Modular design, low cost, lightweight and rugged make the OG the best choice for overhead reel systems.

The electronic register module contains a microprocessor board powered by a lithium battery with an expected life of 3 to 5 years depending on use. It can be programmed to dispense in pints, quarts, liters, or gallons and will totalize in liters or gallons. A calibration factor and unit of measure are programmed during factory test. Unlike mechanical meters, these units can be electronically recalibrated in the field when necessary. A 5-digit liquid crystal display, accurate to the second decimal place, shows the exact amount of fluid dispensed. The entire register module is protected from the wear and tear of normal shop use by a rugged, glass filled, shock resistant, nylon housing.

OPERATION

As fluid passes through the metering chamber by entering the inlet port, it forces the internal gears to rotate and exits through the outlet port. Each rotation of the gear displaces a given volume of fluid. Controlled clearances between the gears and chamber wall insure minimum leakage. As the gears rotate, a magnet on each end of the gear activates the microprocessor in the register.

Depressing the RESET button before each use resets the totalizer to zero. Squeezing the trigger handle dispenses the fluid.

The total amount of fluid dispensed from inventory can be checked periodically by depressing the TOTAL button. If the units dispensed are pints, quarts, or gallons, the totalizer will read in gallons. If the units dispensed are liters, the totalizer will read in liters.

METER IS NOT FOR RESALE MEASUREMENT OF FLUID.

⚠ CAUTION

Please ensure that the fluid is properly filtered before entering meter. Foreign particles will cause inaccuracy as well as malfunction of meter.



FEATURES

- Oval Gear Driven Meter
- Large LCD Display
- Two Decimal Point Precision
- Push Button Calibration
- Totalization in Gallons or Liters
- Delivery in Pints, Quarts, Liters, or Gallons
- Accuracy to $\pm 0.3\%$
- Minimum Three Year Battery Life
- Low Battery Indicator
- Replaceable Battery
- Battery Shelf Life — 10 Years
- Inline Filter in Handle

Model 953 Consists of:

P/N	Description
282835	OG Meter
282842	Rigid Spout
282838	Deluxe Handle
282839	Rubber Boot

Model 954 Consists of:

P/N	Description
282834	OG Meter
282837	Flex Straight Hose
282838	Deluxe Handle
282839	Rubber Boot

PROGRAMMING INSTRUCTION

● PROGRAMMING SWITCH

Located on underside of module. Must be depressed for 5 seconds and released to activate the programming procedure.

● TOTAL BUTTON

- a.) When depressed alone, it will display total quantity of fluid used from inventory.
- b.) When depressed in the programming mode, it will allow you to select any item to be changed.

● RESET BUTTON

- a.) When depressed momentarily, it will clear the display.
- b.) When depressed in the programming mode, it will change any flashing object on the display.

● TO CHANGE UNITS OF MEASURE

- a.) Remove 3 screws holding electronic register module to meter body.
- b.) Depress the PROGRAMMING switch on bottom of module for 5 seconds and release to activate the programming procedure. A unit of measure symbol will flash.
- c.) Toggle RESET button until desired unit of measure symbol appears.
- d.) Again depress the PROGRAMMING switch on bottom of module for 5 seconds and release to end the programming procedure. This operation will lock in the selected program and blank the display.

NOTE: Changing any unit of measure will reset the totalizer to zero.

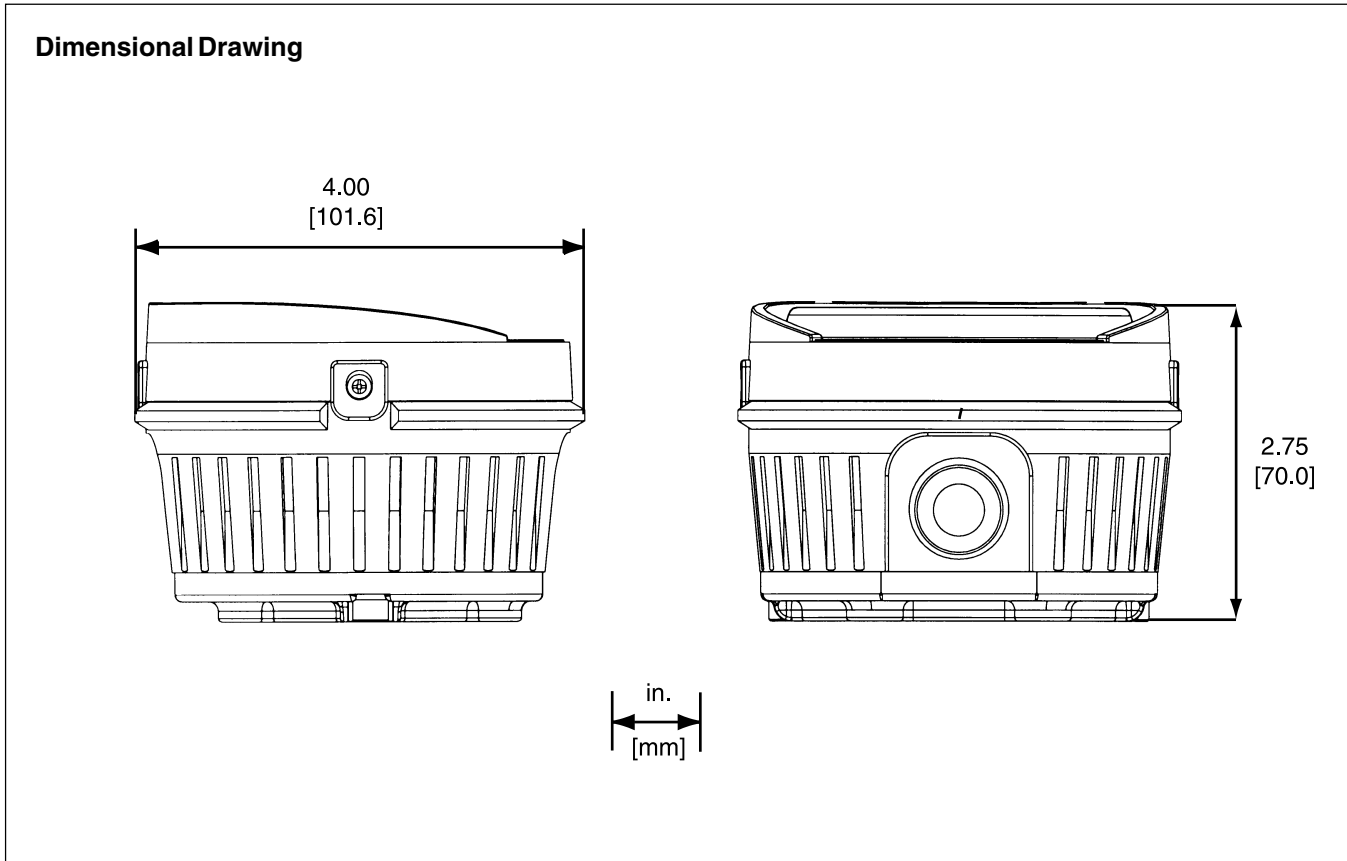
● PROGRAM SCALE FACTOR

Enter the existing meter correction factor (marked on top of the bare meter) into the register as described below.

EXAMPLE: If the existing meter correction factor is 0.995 and the unit of measure is quarts, simply enter 0.995

- a.) Depress the RESET button to activate display (0.00).
- b.) Depress the PROGRAMMING switch on bottom of module for 5 seconds and release to activate the programming procedure.
- c.) Display will show 1.0000 with the digit with the unit of measure icon flashing.
- d.) Toggle RESET button until desired unit of measure symbol appears.
- e.) Toggle TOTAL button and the left most correction factor will now begin to flash.
- f.) Toggle RESET button until the desired digit (0) appears.
- g.) Toggle TOTAL button and the next digit will begin to flash.
- h.) Toggle RESET button until the desired digit (9) appears.
- i.) Toggle TOTAL button until the next digit will begin to flash.
- j.) Toggle RESET button until the desired digit (9) appears.
- k.) Toggle TOTAL button and the next digit will begin to flash.
- l.) Toggle RESET button until the desired digit (5) appears.
- m.) Toggle TOTAL button and the next digit will begin to flash.
- n.) Toggle RESET button until the desired digit (0) appears.
- o.) Depress the PROGRAMMING switch for 5 seconds and release to end the programming procedure. This operation will lock in the selected program and blank the display. Install register module to lube meter.

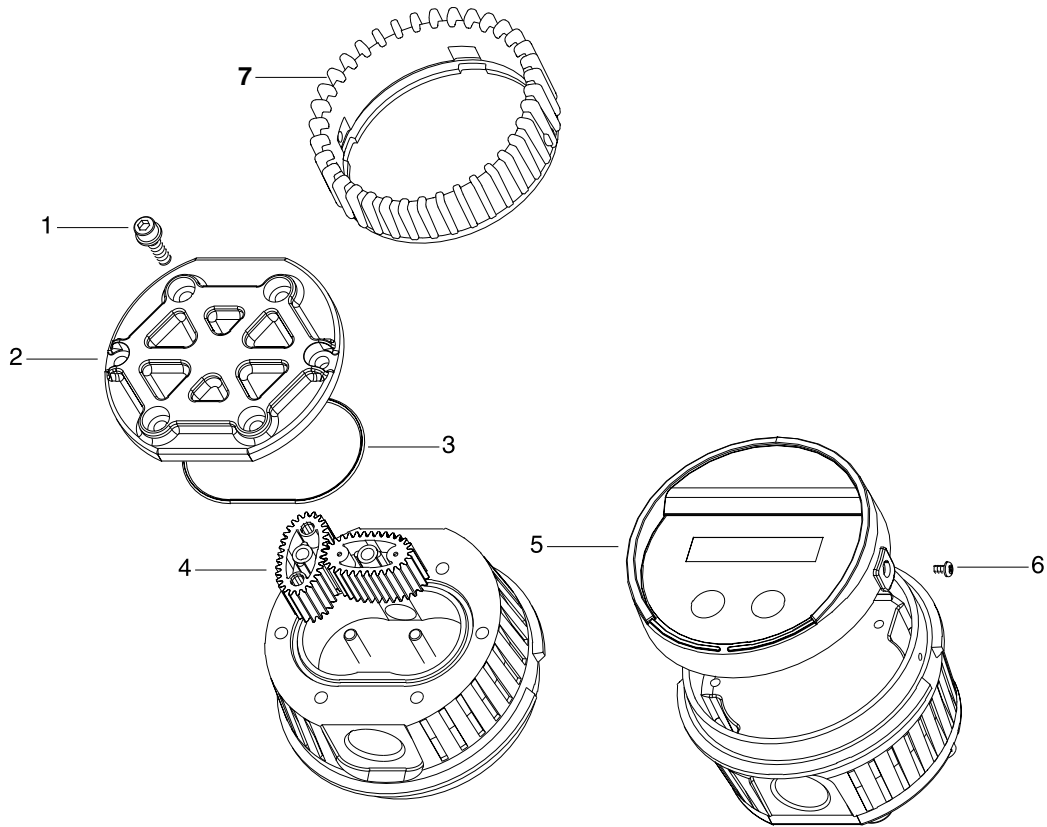
NOTE: After programming, display will be blank. Depress RESET or TOTAL button to reactivate the display.



SPECIFICATIONS

	English	Metric
Maximum Flow *	8 gpm	35 liters/minute
Minimum Flow *	0.25 gpm	1.0 liters/minute
Operating Pressure (Maximum)	1500 psi	103 bar
Operating Pressure (Minimum)	5 psi	.35 bar
Operating Temperature (Maximum)	110° F	45° C
Operating Temperature (Minimum)	-10° F	-20° C
Accuracy (Non-Approved Version)	+/- 0.5%	+/-0.5%
Accuracy (Approved Version)	+/- 0.4%	+/- 0.3%
Weight, Less Handle	2.0 lbs.	0.9 kg
5- Digit LCD Display, 5/16" High (8 mm)	Pints-Quarts-Gallons	Liters
Inlet & Outlet Connections	1/2" NPTF	---

* Tested with Mobil DTE-25 motor oil at ambient temperature.
 Min.-Max. flow rates will vary with fluid viscosity.



ITEM	DESCRIPTION	PART NO.
1	(6) Screw, Sems Type	282845
2	Housing Cover	282846
3	O-Ring	282847
4	Gear Service Kit with O-Ring, Non-Approved: Oil	282848
5	Register Module, Non-Approved	282850
6	(3) Screw	282851
7	Rubber Boot	282839
8	Battery (Not Shown) 3V Lithium Battery - CR 1/2 AA	282852

Americas
One Lincoln Way
St. Louis, MO 63120-1578
USA
Phone +1 314 679 4200
Fax +1 800 424 5359

Europe/Africa
Heinrich-Hertz-Str 2-8
D-69183 Walldorf
Germany
Phone +49 6227 33 0
Fax +49 6227 33 259

Asia/Pacific
25 Int'l Business Park
#01-65 German Centre
Singapore 609916
Phone +65 562 7960
Fax +65 562 9967

Printed in USA

Website
www.lincolnindustrial.com