

CAUTION

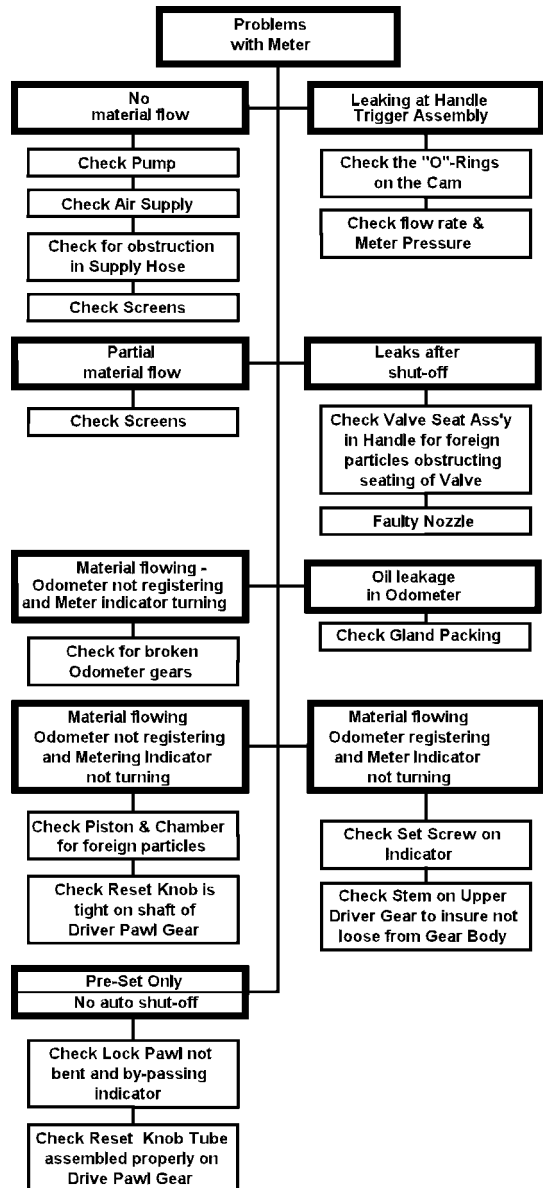
BEFORE METER CAN BE PLACED IN SERVICE "AFTER REPAIR", METER MUST BE TESTED AND APPROVED IN ACCORDANCE WITH U.S. GOVERNMENT'S WEIGHTS AND MEASURES STANDARDS.

CAUTION

NEW METERING SYSTEMS MUST BE PURGED PRIOR TO INSTALLATION OF METERING CONTROL VALVE TO FREE SYSTEM OF CONTAMINATES.

OPERATION

The meter can handle petroleum products such as automatic transmission fluid, S.A.E. 5 to 50 wt. motor oil, S.A.E. 80 to 240 wt. gear oil and antifreeze fluid (ethylene glycol). The meter can be locked in the on position by engaging the trigger lock, to release the lock, the trigger must be depressed thus releasing the lock. Before each use, reset the meter by rotating the indicator knob counterclockwise to zero.



SPECIFICATIONS:

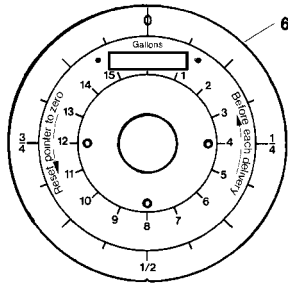
| | |
|----------------------|--|
| Dial Capacity | 32 Ounces - 16 Quarts |
| Totalizer | Quarts |
| Flow Max. | 4 Gallons per min. (15 Liters per min.) |
| Flow Min. | 0.4 Gallons per min. (1.5 Liters per min.) |
| Operating Pres. Max. | 1000 PSI (70 Bar) |
| Operating Temp. Max. | 110°F (45°C) |
| Accuracy | +/- 0.65% |
| Weight | 3.3 Lbs. (1.5 Kg.) |



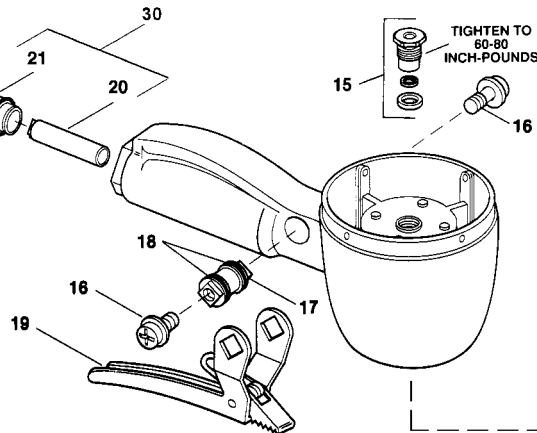
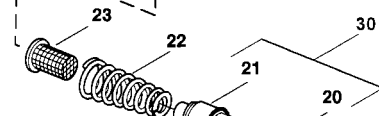
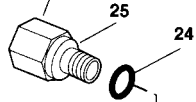
CAUTION

DO NOT TURN POINTER IN A CLOCKWISE DIRECTION AS THIS WILL DAMAGE METER.
The pointer can only be returned to the zero stop in a counterclockwise direction after delivery.

Inner circle indexes in full quarters up to sixteen quarts.
Outer circle indexes in fourths of one quart.



TIGHTEN TO 20 FT POUNDS MAX



TIGHTEN TO 60-80 INCH-POUNDS

TIGHTEN TO 30-40 FT-POUNDS

SERVICE PARTS

| Item | Description | Part No. | Item | Description | Part No. | Item | Description | Part No. |
|------|--------------------------|-------------|------|------------------------------|-------------|------|---------------------------------|-----------|
| 1 | *Shroud Protector | 242911 | 11 | Upper Driving Pawl Worm Gear | 66871-54 | 21 | **Valve Seat Assembly | |
| 2 | Shroud | 68410-12 | 12 | Inner Circle Pointer Gear | 66871-17 | 22 | Spring | 69304-3 |
| 3 | Shroud Screw | 66871-5 (4) | 13 | Spacer | 69304-23 | 23 | Screen | 68410-27 |
| 4 | Knob Assembly | 242912 | 14 | Register Assembly | 69795-3 | 24 | O-Ring | 243176 |
| 5 | Inner Circle Pointer | 66871-53 | 15 | Packing Kit | 237388 | 25 | Adapter | 243175 |
| 6 | Dial Assembly | 68410-26 | 16 | Screw | 68410-2 (2) | 26 | Upper Driving Pawl Gear Assbly. | 66871-111 |
| 7 | Inner Circle Pointer Cam | 66871-50 | 17 | Cam | 68410-5 | 27 | Chamber & Piston Assembly | 68410-15 |
| 8 | Clutch Spring | 66871-3 | 18 | O-Ring | 68410-4 (2) | 28 | Housing Cap Gasket | 66871-12 |
| 9 | Clutch Roller | 66871-4 | 19 | Valve Trigger Assembly | 68410-1 | 29 | Housing Cap | 68410-14 |
| 10 | Set Screw | 50541 | 20 | **Valve Sleeve Assembly | | 30 | Valve Assembly (BUNA-N) | 271699 |

* May be purchased separately

**See valve assembly item 30