

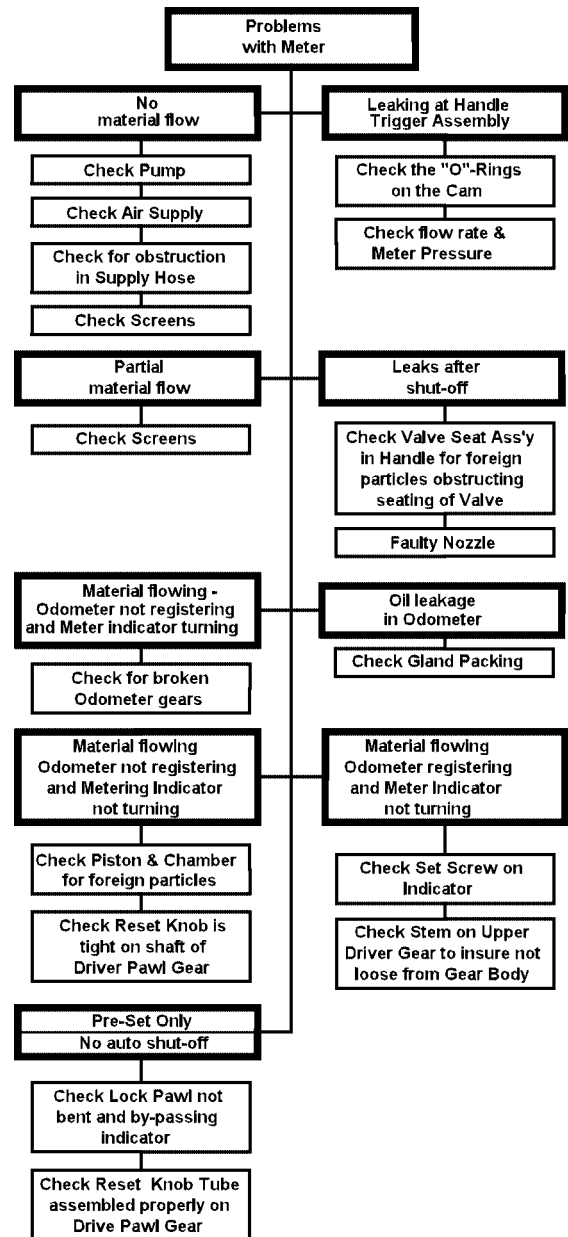
### CAUTION

Before meter can be placed in service "After Repair", meter must be tested and approved in accordance with U.S. Government's Weights & Measures Standards.



### CAUTION

New metering systems must be purged prior to installation of metering control valve to free system of contaminates.



### OPERATION

The Meter can handle petroleum products such as automatic transmission fluid, S.A.E. 5 to 50 weight motor oil, S.A.E. 80 to 240 weight gear oil and antifreeze fluid (ethylene glycol).

The meter can be locked in the on position by engaging the trigger lock, to release the lock, the trigger must be depressed thus releasing the lock. Before each use, reset the meter by rotating the indicator knob counter-clockwise to zero.

### SPECIFICATIONS:

Dial Capacity	32 Ounces - 16 quarts
Totalizer	Quarts
Flow Max.	4 Gallons per min. (15 liters per min.)
Flow Min.	0.4 Gallons per min. (1.5 Liters per min.)
Operating Pressure Max.	1000 PSI (70 Bar)
Operating Temp. Max.	110° F (45° C)
Accuracy	+/- 0.65%
Weight	3.3 Lbs. (1.5 Kg.)
Meter Inlet & Outlet Thds.	1/2 NPTF

Americas:  
One Lincoln Way  
St. Louis, MO 63120-1578  
USA  
Phone +1.314.679.4200  
Fax +1.800.424.5359

Europe/Africa:  
Heinrich-Hertz-Str 2-8  
D-69183 Walldorf  
Germany  
Phone +49.6227.33.0  
Fax +49.6227.33.259

Asia/Pacific:  
25 Int'l Business Park  
#01-65 German Centre  
Singapore 609916  
Phone +65.562.7960  
Fax +65.562.9967

© Copyright 2002  
Printed in USA

Web site:  
www.lincolnindustrial.com

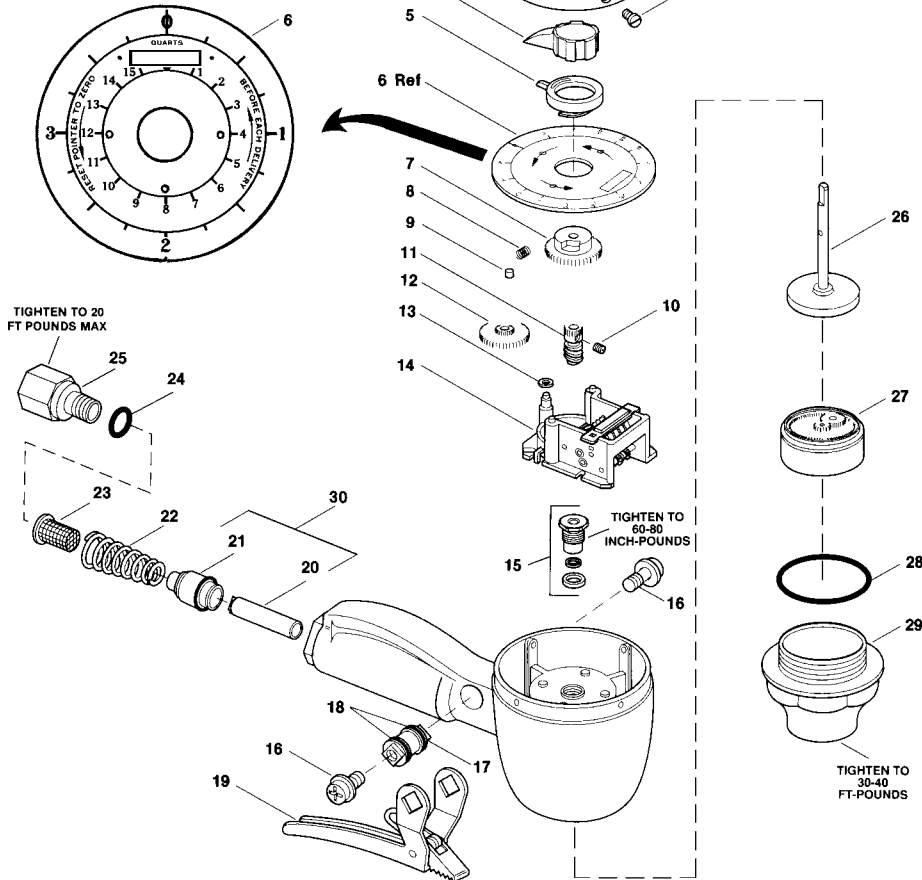


### CAUTION

DO NOT TURN POINTER IN A CLOCKWISE DIRECTION AS THIS WILL DAMAGE METER.

The pointer can only be returned to the zero stop in a counterclockwise direction after delivery.

Inner circle indexes in full quarts up to sixteen quarts.  
Outer circle indexes in fourths of one quart.



### SERVICE PARTS

Item	Description	Part Number	Item	Description	Part Number
1	* Shroud Protector	242911	16	Screw	68410-2 (2)
2	Shroud	68410-12	17	Cam	68410-5
3	Shroud Screw	66871-5 (4)	18	O-Ring	68410-4 (2)
4	Knob Assembly	242912	19	Valve Trigger Assembly	68410-1
5	Inner Circle Pointer	66871-53	20	**Valve Sleeve Assembly	
6	Dial Assembly	68410-26	21	**Valve Seat Assembly	
7	Inner Circle Pointer Cam	66871-50	22	Spring	69304-3
8	Clutch Spring	66871-3	23	Screen	68410-27
9	Clutch Roller	66871-4	24	O-Ring	243176
10	Set Screw	50541	25	Adapter	243175
11	Upper Driving Pawl Worm Gear	66871-54	26	Upper Driving Pawl Gear Assembly	66871-111 ©
12	Inner Circle Pointer Gear	66871-17	27	Chamber & Piston Assembly	68410-15
13	Spacer	69304-23	28	Housing Cap Gasket	66871-12
14	Register Assembly	69795-3	29	Housing Cap	68410-14
15	Packing Kit	237388	30	Valve Assembly (BUNA-N)	271700 ©

Quantity

\* May be purchased separately

\*\* See valve assembly item 30

© Indicates change