

**CAUTION**

Before meter can be placed in service "After Repair", meter must be tested and approved in accordance with U.S. Government's Weights and Measures Standards.

**CAUTION**

New metering systems must be purged prior to installation of metering control valve to free system of contaminates.

### OPERATION

The Meter can handle petroleum products such as automatic transmission fluid, S.A.E. 5 to 50 Wt. motor oil, S.A.E. 80 to 240 wt. gear oil and antifreeze fluid (ethylene glycol).

The preset meter is set by turning the knob counterclockwise to the desired amount of material to be dispensed. The trigger is then depressed and locked in the "on" position. The pointer knob rotates clockwise towards zero where it strikes a pin in the meter face above the "0" zero, which releases the lock bar automatically stopping the flow.

The meter can be stopped prior to dispensing the preset amount by rotating the pointer manually clockwise until it strikes the pin above the "0" zero, or by pushing the pin counterclockwise by hand thus leaving the knob indicating the remaining amount to be dispensed.

### SPECIFICATIONS:

Dial Capacity	1 to 60 gallons
Totalizer	Gallons
Flow Max.	4 Gallons per min. (15 liters per min.)
Flow Min.	0.4 Gallons per min. (1.5 Liters per min.)
Operating Pressure Max.	1000 PSI (70 Bar)
Operating Temp. Max.	110°F (45° C)
Accuracy	+/- 0.65%
Weight	3.3 Lbs. (1.5 Kg.)
Meter Inlet & Outlet Thds.	1/2 NPT

Americas:  
One Lincoln Way  
St. Louis, MO 63120-1578  
USA  
Phone +1.314.679.4200  
Fax +1.800.424.5359

Europe/Africa:  
Heinrich-Hertz-Str 2-8  
D-69183 Walldorf  
Germany  
Phone +49.6227.33.0  
Fax +49.6227.33.259

Asia/Pacific:  
25 Int'l Business Park  
#01-65 German Centre  
Singapore 609916  
Phone +65.562.7960  
Fax +65.562.9967

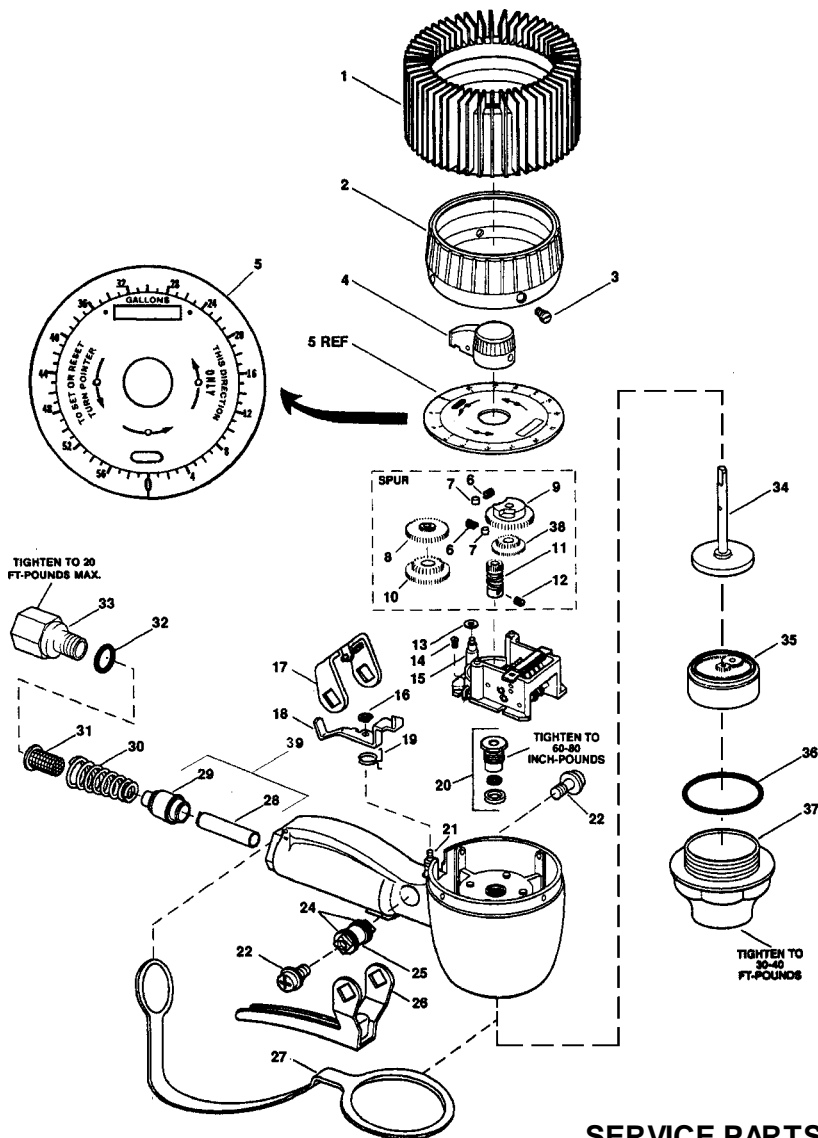
© Copyright 2002  
Printed in USA

Web site:  
www.lincolnindustrial.com



## CAUTION

If meter is mishandled, the Lock Bar (item 16) can become bent and screw may fail to contact Lock Pawl (Item 17). If this happens, the meter will not shut off at preset amount, requent inspection is recommended.



### SERVICE PARTS

Item	Part No.	Qty.	Description	Item	Part No.	Qty.	Description
1	242911	1	*Shroud Protector	21	236400	1	Pin Lock Pawl
2	68410-12	1	Shroud	22	68410-2	2	Screw
3	66871-5	4	Shroud Screw	23			
4	242913	1	Knob Assembly	24	68410-4	2	Quad Ring
5	70247	1	Dial Assembly	25	69304-2	1	Cam
6	66871-3	2	Clutch Spring	26	69304-4	1	Trigger Assembly
7	66871-4	2	Clutch Roller	27	69304-24	1	Hand Guard
8	236686	1	Compound Gear Assembly	28		1	** Valve Sleeve Assembly
9	69304-10	1	Preset Knob Drive Cam	29		1	** Valve Seat Assembly
10	69428-18	1	Gear and Pinion	30	69304-3	1	Spring
11	69428-15	1	Worm Assembly	31	68410-27	1	Screen
12	50541	1	Set Screw	32	243176	1	O-Ring
13	66871-116©	4	Washer	33	243175	1	Adapter
14	70457-7	1	Screw	34	236683	1	Upper Driving Pawl Gear Assembly
15	69428-16	1	Register Assembly	35	68410-15	1	Chamber and Piston Assembly
16	69304-14©	1	E-Ring	36	66871-12©	1	O-Ring
17	69304-5	1	Lockbar	37	68410-14	1	Cap
18	69304-13	1	Lock Pawl	38	69428-19	1	Gear and Pinion
19	69304-12	1	Lock Pawl Spring	39	271700	1	Valve Assembly
20	237388	1	Packing Kit				

\* May be purchased separately

\*\* See valve assembly item 39

© Indicates change