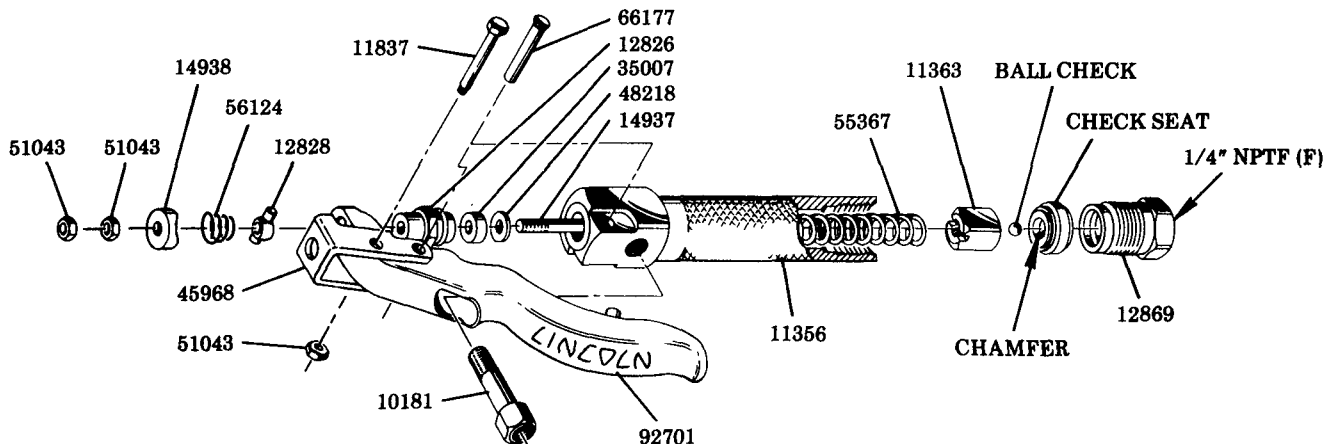


CONTROL VALVES

LOW PRESSURE



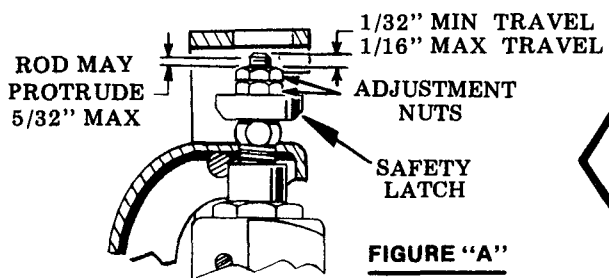
Models 84158 84385



CAUTION

TO PREVENT ACCIDENTS, ROTATE SAFETY LATCH TO THE "OFF" POSITION AFTER EACH USE.

MODEL	BALL CHECK	CHECK SEAT
84158	69133	92168
84385	66255	11364



After assembly, the 51043 Adjustment Nuts at the top of the 14937 Pull Rod should be adjusted as in Figure "A". To prevent damage to the ball check and seat, do not adjust nuts for less than 1/32" pull rod travel.

If material continues to flow from the nozzle when the control valve handle is released, the ball is failing to form a seal in the ball seat. Unscrew the 12869 Adapter from the 11356 Valve Body and remove the ball check and seat. If center of check seat is rough, pitted or worn, replace the check seat (11364 Check Seat used in Model 84385 is reversible). When assembling new part into Model 84158, be sure the ball is seated in the side with the chamfered hole as shown above.

SERVICE PARTS

PART	DESCRIPTION	PART	DESCRIPTION
10181	Nozzle adapter	35007	Valve stem packing
11356	Control valve body	45968	Toggle link
11363	Ball retainer	48218	Packing washer
11837	Toggle pivot screw	51043	Lock nut
12826	Packing gland	55367	Spring
12828	Pivot bar	56124	Spring
12869	Coupling nut	66177	Toggle pin
14937	Pull rod	92701	Handle
14938	Safety latch		

LINCOLN ST. LOUIS
4010 GOODFELLOW BLVD • ST. LOUIS, MO 63120 • (314) 383 5900



A DIVISION OF
McNEIL
CORPORATION

SECTION - **F3**
PAGE - **4B**