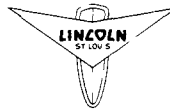
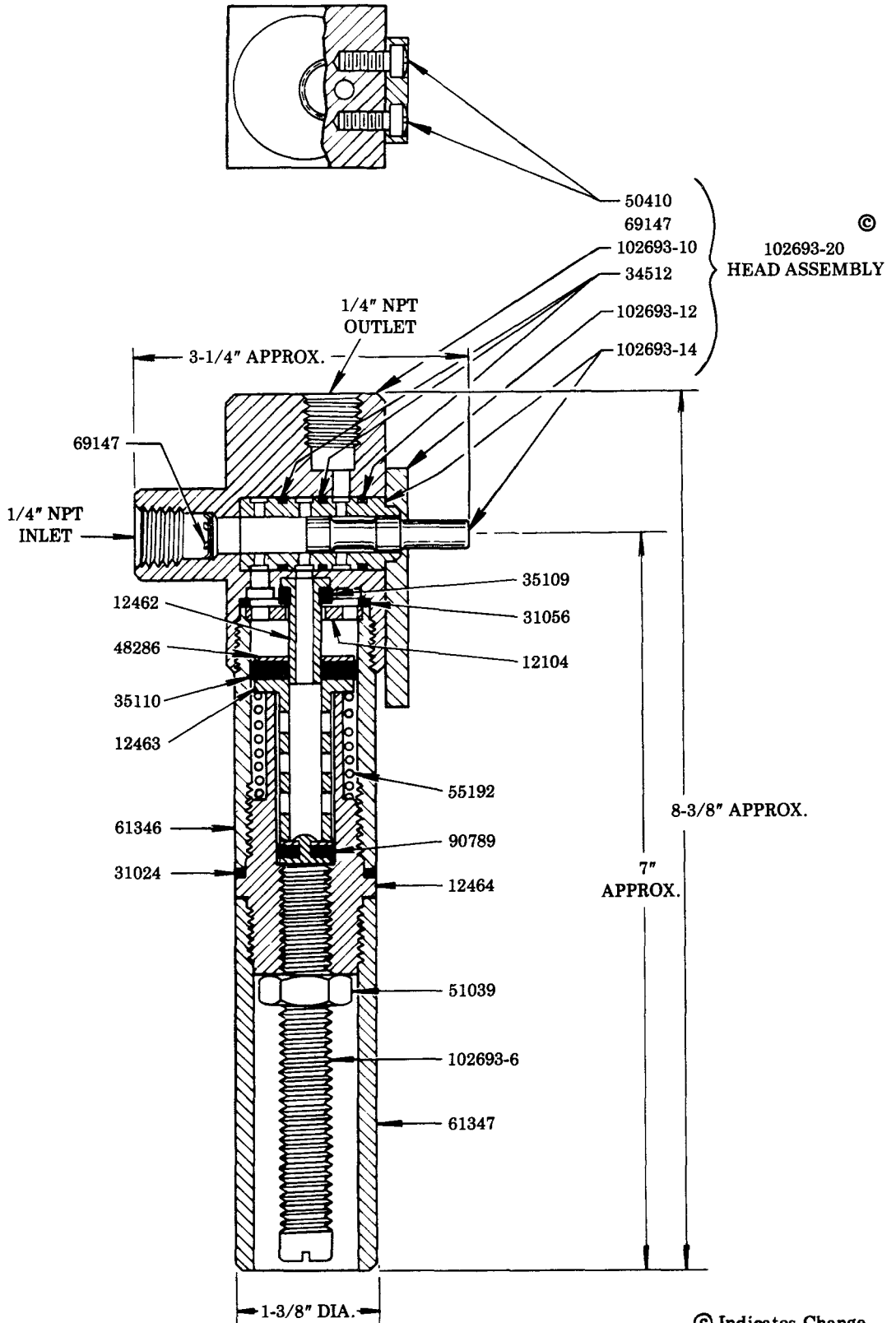


# MEASURING VALVE



# Model 102693

# Series "C"



**LINCOLN ST. LOUIS**  
4010 GOODFELLOW BLVD • ST LOUIS MO 63120 • (314) 383 5900



A DIVISION OF  
**McNEIL**  
CORPORATION

SECTION - **F40**  
PAGE - **18C**

## SPECIFICATIONS

Maximum operating pressure 5,000 PSI. Minimum output .012 oz. or .35 grams. } OUTPUT USING S.A.E. 30 OIL.  
 Minimum operating pressure 500 PSI. Maximum output .16 oz. or 4.5 grams. }

## ADJUSTMENT

The volume of lubricant dispensed with each depression of the plunger is regulated by the adjusting screw. Loosen lock nut and turn adjusting screw clockwise to decrease volume and counter-clockwise to increase volume.

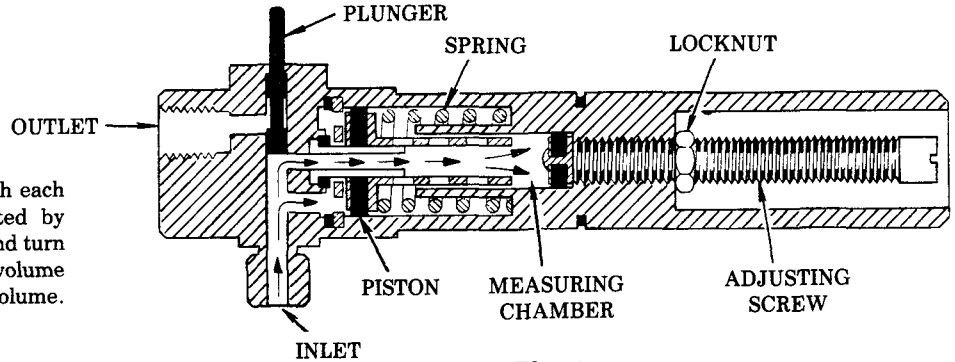


Fig. 1

## OPERATION

When plunger is released, spring pressure forces piston forward to permit lubricant entering inlet to fill measuring chamber. Position of plunger prevents lubricant from flowing out of outlet (See Fig. 1).

When plunger is depressed, the lubricant entering inlet drives piston back to force lubricant from measuring chamber through outlet. Position of plunger connects measuring chamber with outlet passage (See Fig. 2).

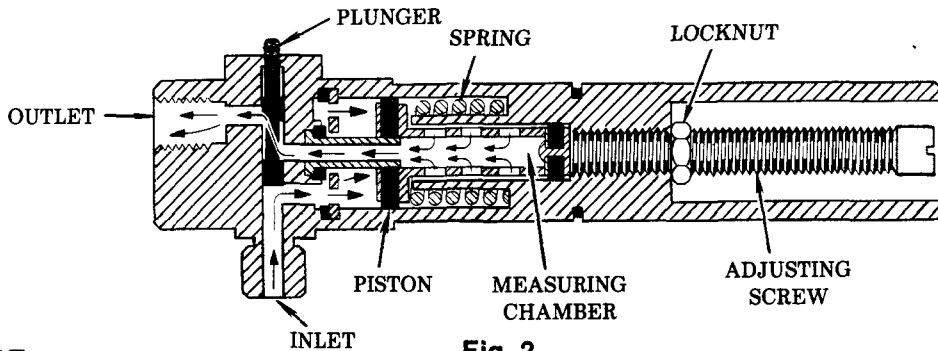


Fig. 2

## MAINTENANCE

If lubricant continues to flow from outlet after plunger is released the plunger is worn or damaged. The 102693-14 Bushing and Plunger Assembly and 34512 O-rings should be replaced.

If lubricant continues to flow from outlet when plunger is depressed and measuring chamber is emptied, the plunger or the piston is worn or damaged and should be replaced.

## SERVICE PARTS

PART NO.	QUAN.	DESCRIPTION	PART NO.	QUAN.	DESCRIPTION
12104	1	Control washer	51039	1	Nut
12462	1	Follower guide	55192	1	Spring
12463	1	Follower bushing	61346	1	Container tube
12464	1	Container nut	61347	1	Adapter
31024	1	Gasket	69147	1	Retaining ring
31056	1	Gasket	90789	1	Packing assembly
34512	3	O-ring	102693-6	1	Adjusting screw
35109	1	Follower guide packing	102693-10	1	Body assembly
35110	1	Container packing	102693-12	1	Plunger retainer
48286	1	Container washer	102693-14	1	Bushing and plunger assembly
50410	2	Screw			

### RETAIN THIS INFORMATION FOR FUTURE REFERENCE

When ordering replacement parts, list: Part Number, Description, Model Number, and Series Letter.

LINCOLN ST. LOUIS provides a Distributor Network that stocks equipment and replacement parts.

A list of Authorized Service Departments will be furnished upon request.