

# AIR OPERATED EJECTOR

23:1 RATIO

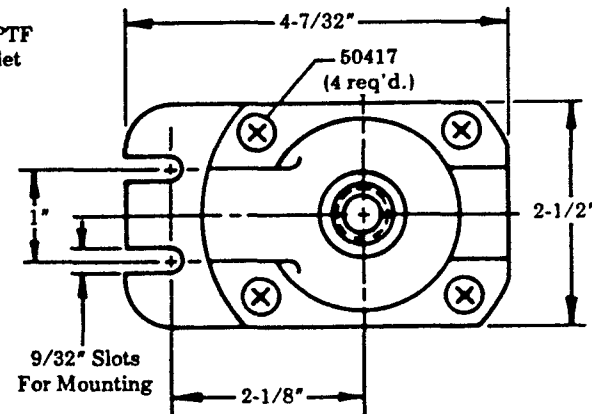
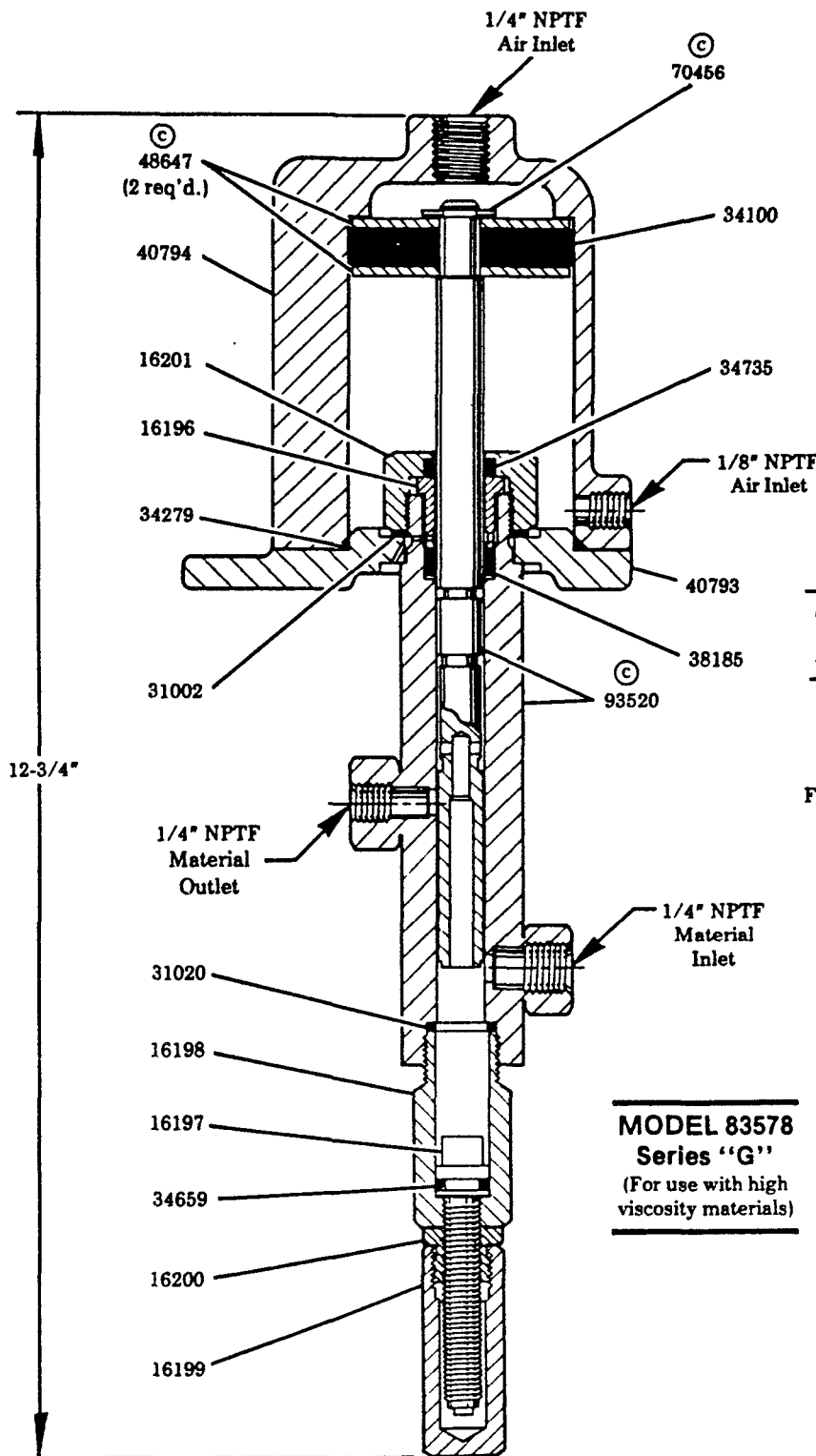
# Models 83578 84578

## 83578 SPECIFICATIONS

	MIN.	MAX.
PRIMING PRESSURE	—	1,000 psi
AIR OPERATING PRESSURE	80 psi	100 psi
OUTPUT PER CYCLE	.015 in <sup>3</sup>	.2 in <sup>3</sup>

### NOTE

A length of hose must be used at the material inlet to prevent a hydraulic lock which may occur if rigid piping is used.



**MODEL 83578**  
**Series "G"**  
(For use with high  
viscosity materials)

## SERVICE PARTS

PART	DESCRIPTION
16196	Packing sleeve
16197	Adjustment screw
16198	Nose adapter
16199	Adjustment screw cap
16200	Lock nut
16201	Packing nut
*31002	Gasket
*31020	Gasket
*34100	Piston packing
*34279	O-ring
*34659	O-ring
*34735	O-ring
*38185	U-cup (Polyethylene)
40793	Mounting base
40794	Air cylinder
48647	Washer
50417	Screw
70456	Retaining ring
*93520	Body & plunger assembly

\*Recommended Service  
Parts Inventory

# LINCOLN

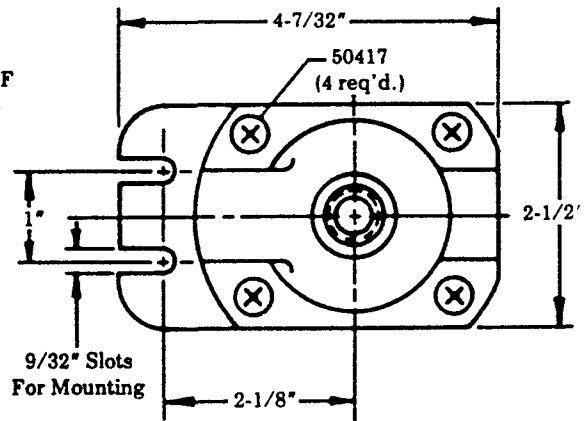
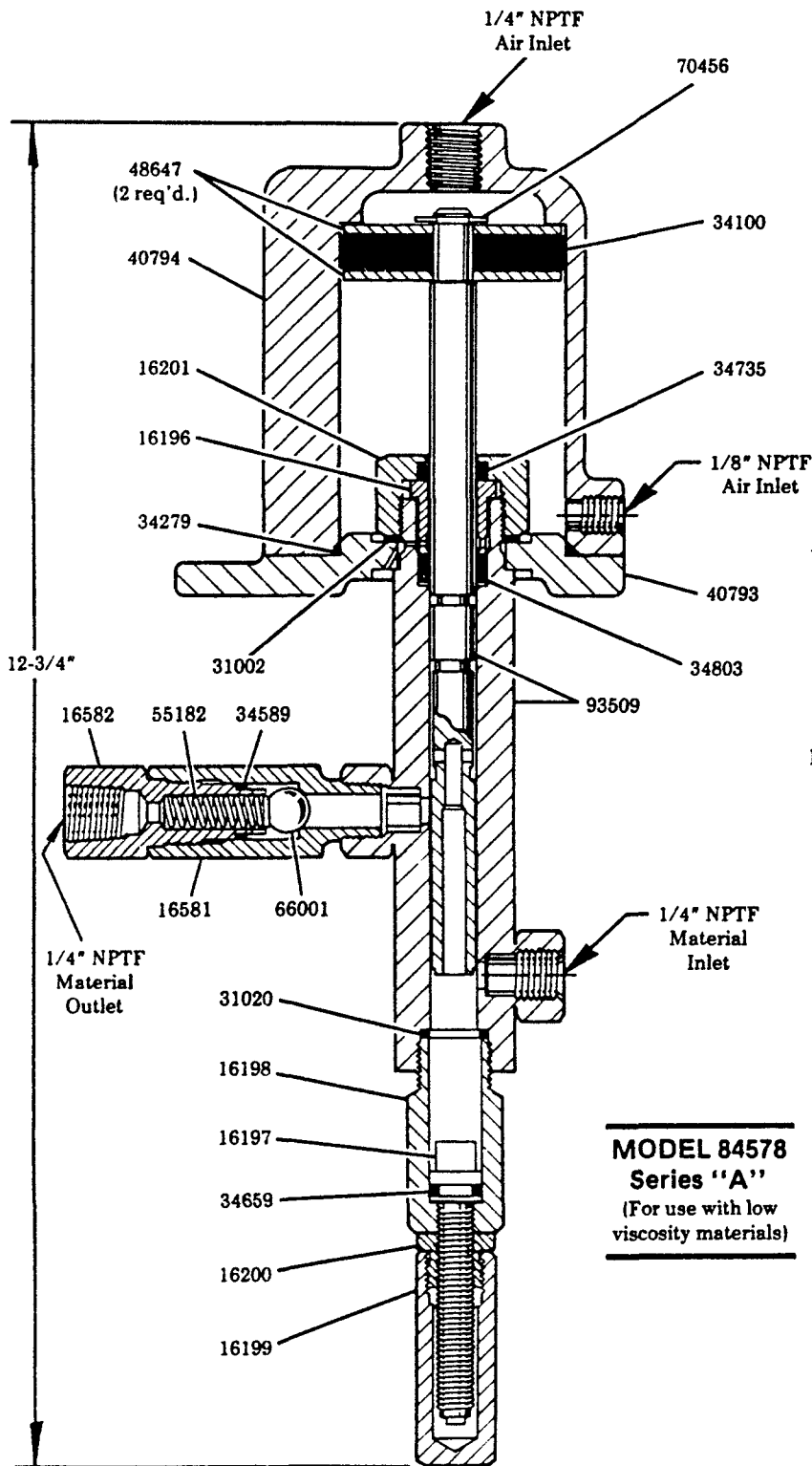
LINCOLN, One Lincoln Way  
St. Louis, Missouri 63120-1578  
(314) 679-4200 Customer Service, (314) 679-4300

SECTION - F40

PAGE - 23B

## 84578 SPECIFICATIONS

	MIN.	MAX.
PRIMING PRESSURE	—	100 psi
AIR OPERATING PRESSURE	80 psi	100 psi
OUTPUT PER CYCLE	.015 in <sup>3</sup>	.2 in <sup>3</sup>



**MODEL 84578**  
**Series "A"**  
 (For use with low  
 viscosity materials)

\* Recommended Service  
 Parts Inventory

## SERVICE PARTS

PART	DESCRIPTION
16196	Packing sleeve
16197	Adjustment screw
16198	Nose adapter
16199	Adjustment screw cap
16200	Locknut
16201	Packing nut
16581	Male check body
16582	Female check body
* 31002	Gasket
* 31020	Gasket
* 34100	Piston packing
* 34279	O-ring
34589	O-ring
* 34659	O-ring
* 34735	O-ring
* 34803	U-cup (Polyurethane)
* 40793	Mounting base
40794	Air cylinder
48647	Washer
50417	Screw
55182	Spring
66001	Ball check
70456	Retaining ring
* 93509	Body & plunger assembly

### RETAIN THIS INFORMATION FOR FUTURE REFERENCE

When ordering replacement parts, list: Part Number, Description, Model Number, and Series Letter.

LINCOLN ST. LOUIS provides a Distributor Network that stocks equipment and replacement parts.  
 A list of Authorized Service Departments will be furnished upon request.