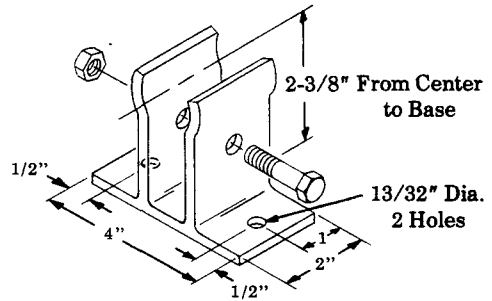


FOR FLUID LUBRICANT OR
N.L.G.I. #0 AND #1 GREASE.

SPECIFICATIONS

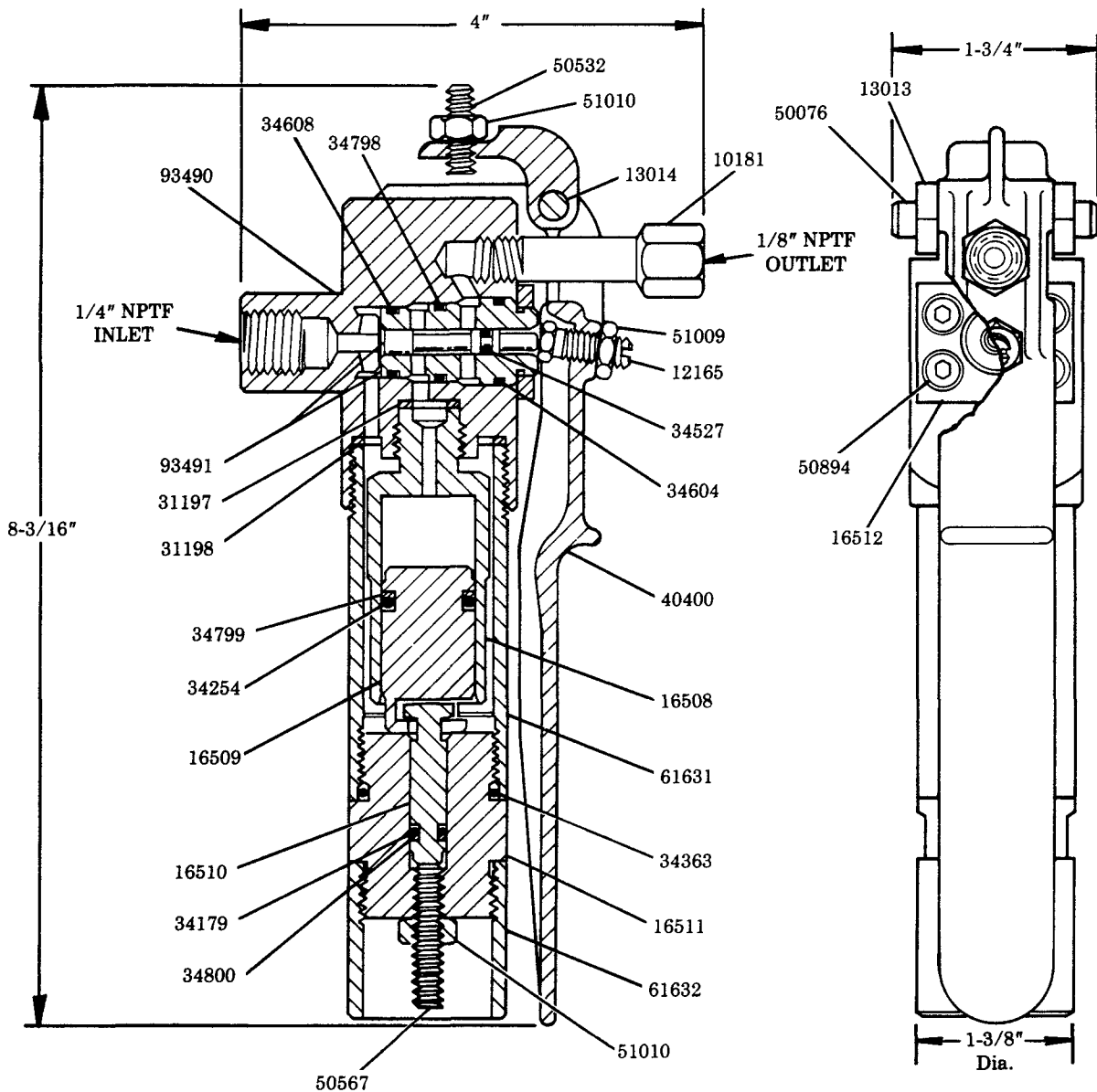
Adjustable Output: .012 oz. (.022 cu. in.) min.
.16 oz. (.288 cu. in.) max.

Operating Pressure: 500 psi min.
5000 psi max.



81862 MOUNTING BRACKET (optional)

(Must be ordered separately)



OPERATING INSTRUCTIONS

The Model 284523 Measuring Valve is designed to dispense measured quantities of semi-weight oils, and lubricants initially pumped from power operated lubricguns.

INSTALLATION

The measuring valve can be mounted in either a vertical or horizontal stationary position using an optional 81862 Mounting Bracket (see front page). Measuring valve is also adaptable for attachment to a flexible delivery hose.

ADJUSTMENT

The volume of lubricant dispensed with each depression of the handle is regulated by the adjusting screw. Loosen lock nut and turn adjusting screw to right to decrease volume and to left to increase volume.

Set plunger adjusting screw by holding handle down until where handle contacts tube and adjusting screw down until it contacts piston bushing. Tighten lock nut. Set handle stop screw to where ground surface of piston is flush with the top of the piston bushing, with piston and handle in the up position.

OPERATION

Figure 1. When handle is released differential pressure forces piston back to permit lubricant entering inlet to fill measuring chamber. Position of plunger prevents lubricant from flowing out of outlet.

Figure 2. When handle is depressed the lubricant entering inlet drives piston forward to force lubricant from measuring chamber through outlet. Position of plunger connects measuring chamber with outlet passage.

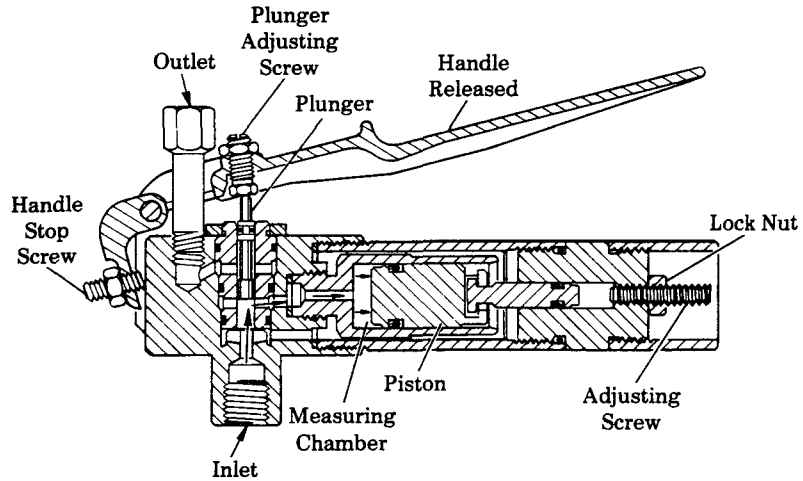


FIGURE 1

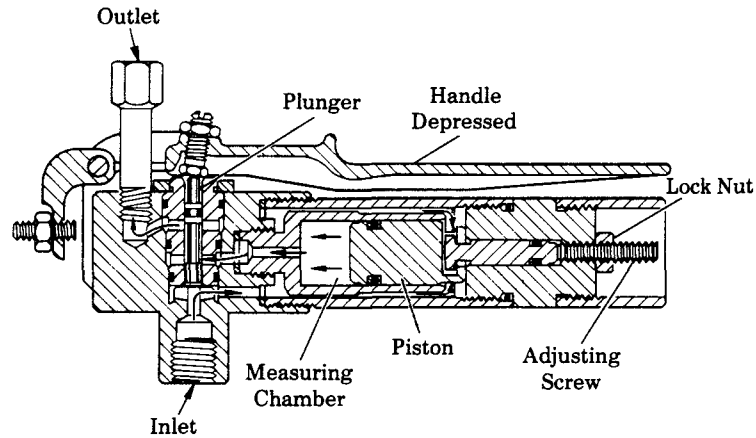


FIGURE 2

MAINTENANCE

Figure 1. If lubricant continues to flow from outlet after handle is released the plunger is worn or damaged and the 93491 Bushing and Plunger Assembly should be replaced.

Figure 2. If lubricant continues to flow from outlet when handle is depressed and measuring chamber is emptied, the plunger or the piston is worn or damaged and should be replaced.

Part	Qty.	Description	Part	Qty.	Description	Part	Qty.	Description
10181	1	Adapter	34179	1	O-ring	50532	1	Screw
12165	1	Adjusting screw	34254	1	O-ring	50567	1	Screw
13013	2	Toggle	34363	1	O-ring	50894	4	Screw
13014	1	Pin	34527	1	O-ring	51009	1	Nut
16508	1	Measuring chamber	34604	1	O-ring	51010	2	Nut
16509	1	Piston	34608	1	O-ring	61631	1	Tube
16510	1	Piston	34798	1	O-ring	61632	1	Tube
16511	1	Adjustment housing	34799	1	Back-up ring	93490	1	Body
16512	1	Bushing retainer	34800	1	Back-up ring	93491	1	Bushing & plunger assembly
31197	1	Gasket	40400	1	Handle			
31198	1	Gasket	50076	4	Screw			

RETAIN THIS INFORMATION FOR FUTURE REFERENCE

When ordering replacement parts, list: Part Number, Description, Model Number, and Series Letter.

LINCOLN provides a Distributor Network that stocks equipment and replacement parts.