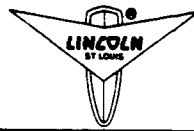
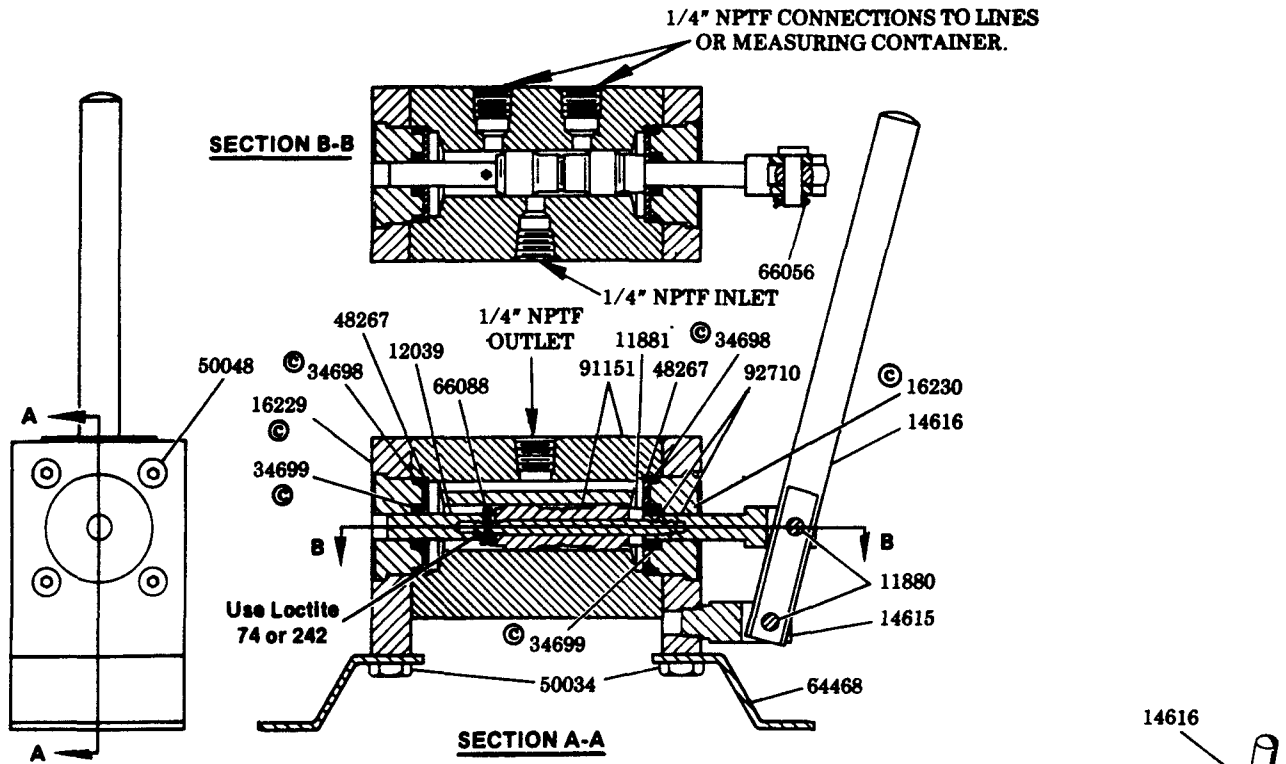


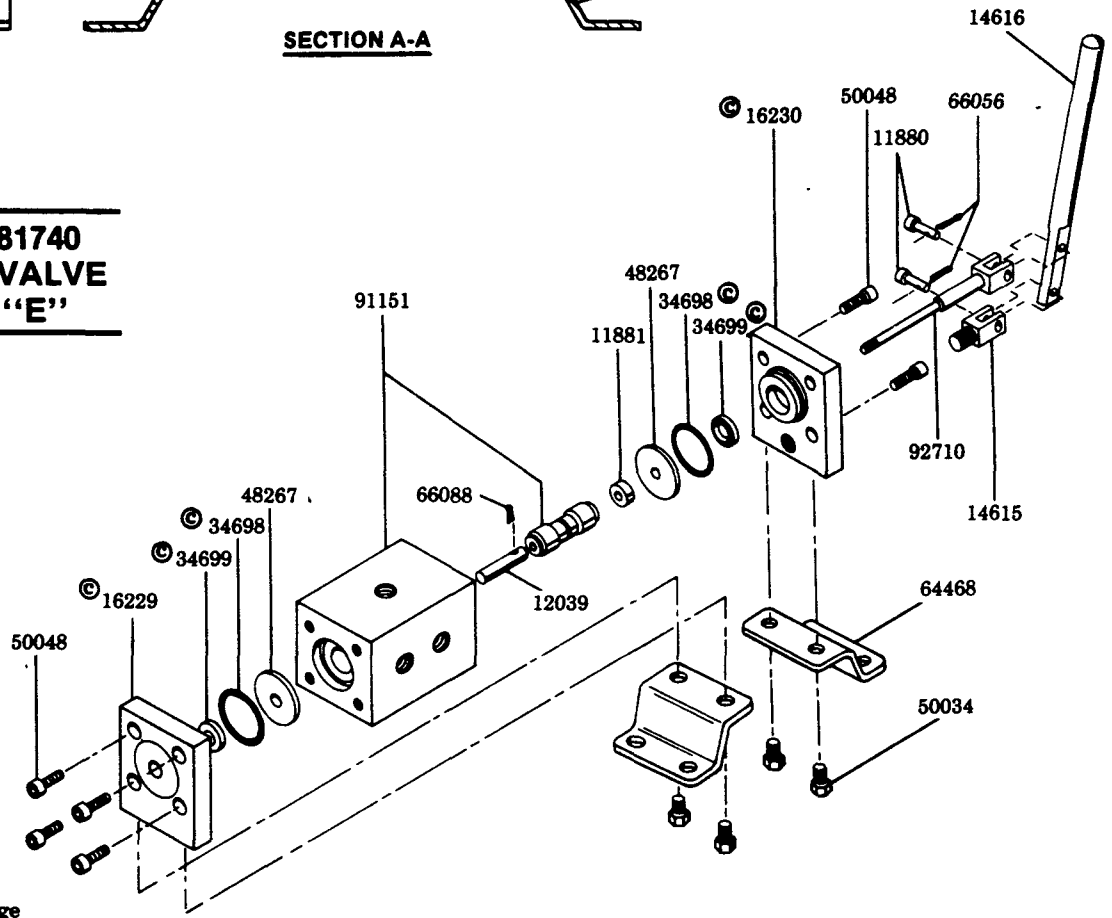
FOUR WAY HYDRAULIC VALVE



Models 81740 84205



**MODEL 81740
MANUAL VALVE
SERIES "E"**

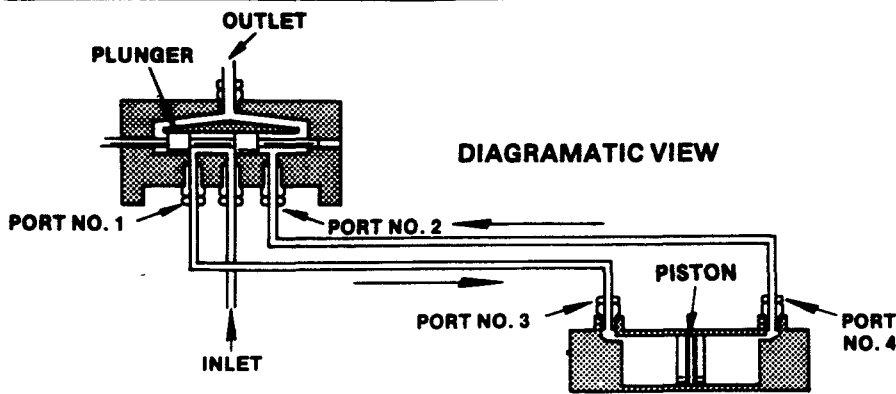


© Indicates change

LINCOLN ST. LOUIS
4010 GOODFELLOW BLVD. - ST LOUIS, MO. 63120 - (314) 383-5900

McNEIL CORPORATION
A DIVISION OF

**SECTION - F40
PAGE - 5E**



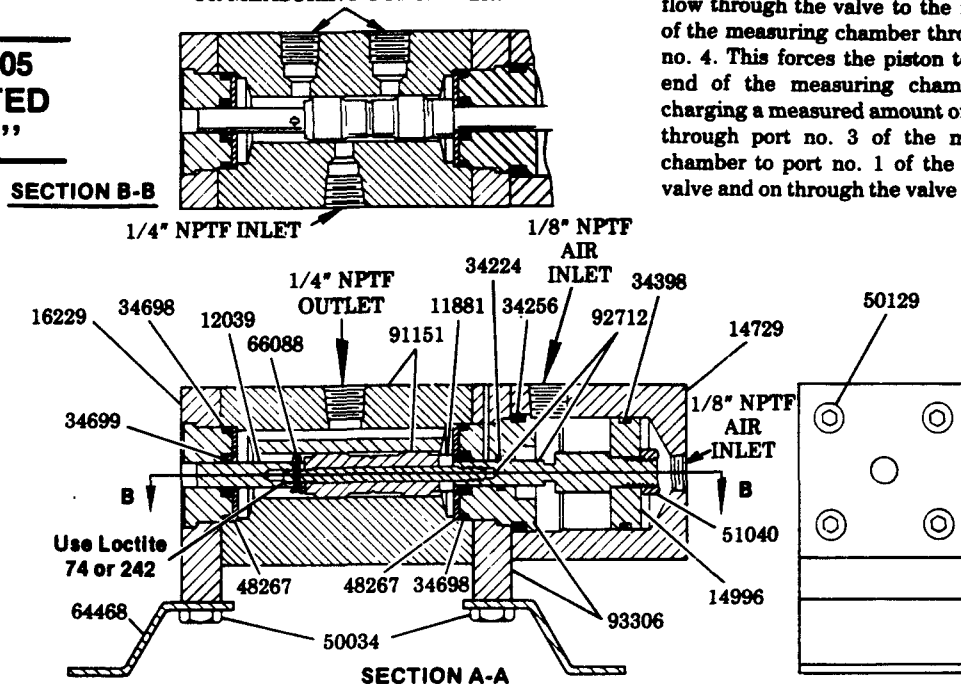
OPERATION

When the plunger in the four way valve is shifted to the left, a passage is opened between the inlet and port no. 1, permitting the material to flow through the valve and into the left end of the measuring chamber, through port no. 3. This forces the piston to the right end of the measuring chamber, discharging a measured amount of material through port no. 4 of the measuring chamber to port no. 2 of the four way valve and on through to valve outlet.

When plunger is shifted to the right, a passage is opened between the inlet and port no. 2, permitting the material to flow through the valve to the right end of the measuring chamber through port no. 4. This forces the piston to the left end of the measuring chamber, discharging a measured amount of material through port no. 3 of the measuring chamber to port no. 1 of the four way valve and on through the valve outlet.

MODEL 84205 AIR OPERATED SERIES "B"

1/4" NPTF CONNECTIONS TO LINES
OR MEASURING CONTAINER.



SERVICE PARTS

PART	QUAN.	DESCRIPTION	PART	QUAN.	DESCRIPTION
11880	2	Handle pin	34699	2	U-cup packing
11881	1	Valve stem spacer	48267	2	Packing washer
12039	1	Equalizer plunger	50034	4	Screw
14615	1	Pivot stud	50048	*	Screw
14616	1	Handle	50129	4	Screw
14729	1	Cylinder end block	51040	1	Nut
14996	1	Piston	64468	1	Mounting bracket
16229	1	Valve end plate assembly	66056	2	Cotter pin
16230	1	Valve end plate assembly	66088	1	Cotter pin
34224	1	O-ring	91151	1	Valve block & stem assembly
34256	1	O-ring	92710	1	Shaft assembly
34398	1	O-ring	92712	1	Shaft assembly
34698	2	O-ring	93306	1	Valve end plate assembly

* Model 81740 - 8 req'd.
Model 84205 - 4 req'd.

RETAIN THIS INFORMATION FOR FUTURE REFERENCE

When ordering replacement parts, list: Part Number, Description, Model Number, and Series Letter.
LINCOLN ST. LOUIS provides a Distributor Network that stocks equipment and replacement parts.
A list of Authorized Service Departments will be furnished upon request.