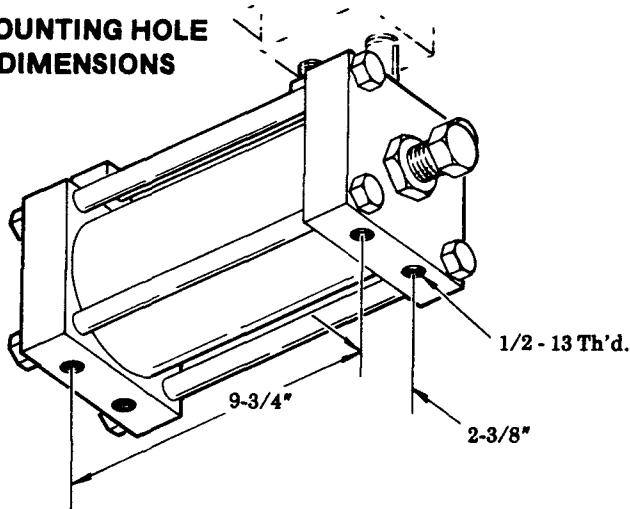


HYDRO-MEASURE & VALVE



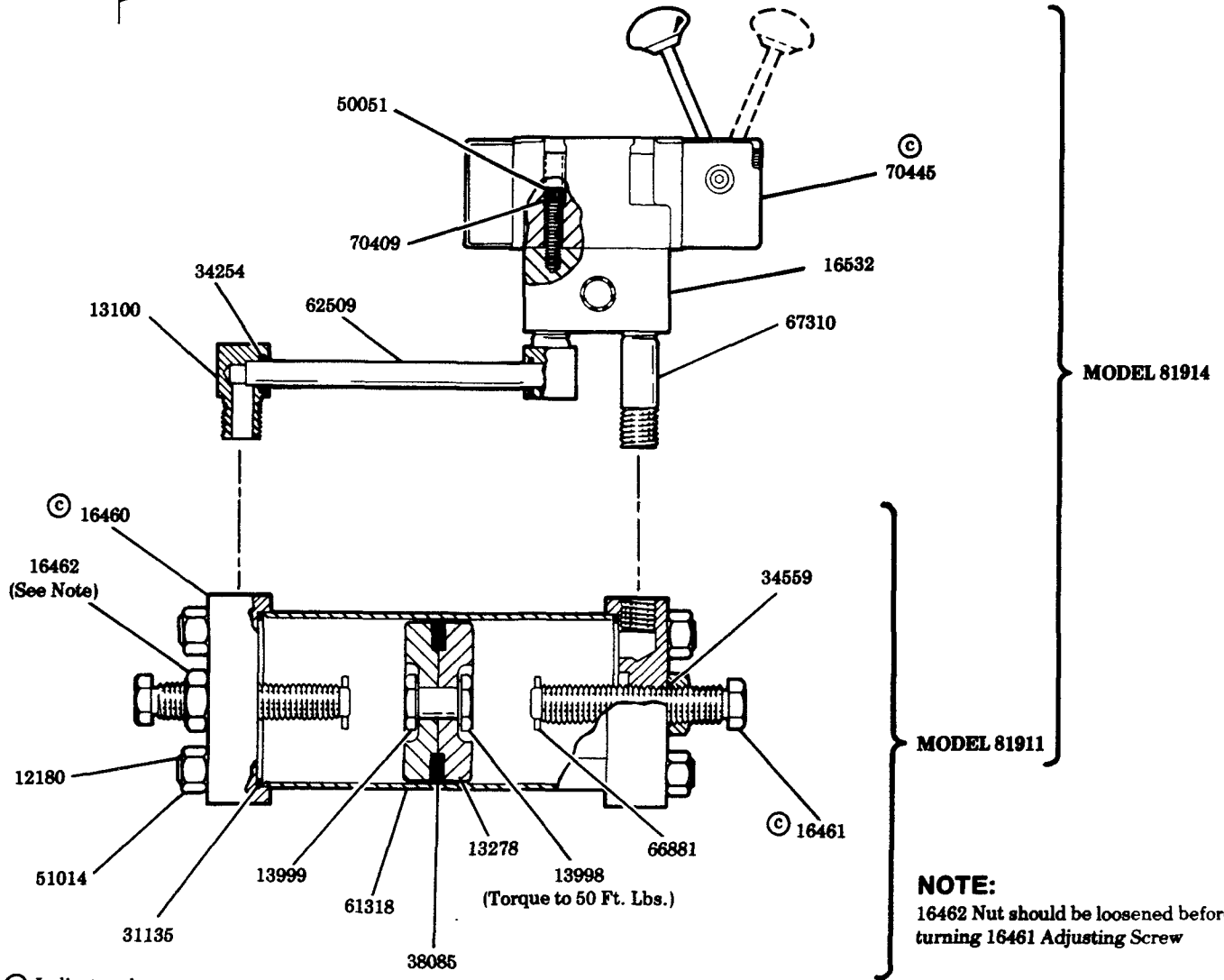
Models 81911
81914
Series "H"

MOUNTING HOLE DIMENSIONS



SPECIFICATIONS

1-1/2 QUARTS (86 CU. IN.) MAXIMUM OUTPUT.
750 PSI MAXIMUM OPERATING PRESSURE.



NOTE:
16462 Nut should be loosened before
turning 16461 Adjusting Screw

© Indicates change

LINCOLN ST. LOUIS
4010 GOODFELLOW BLVD. • ST. LOUIS, MO. 63120 • (314) 383-5900

A DIVISION OF
McNEIL
CORPORATION

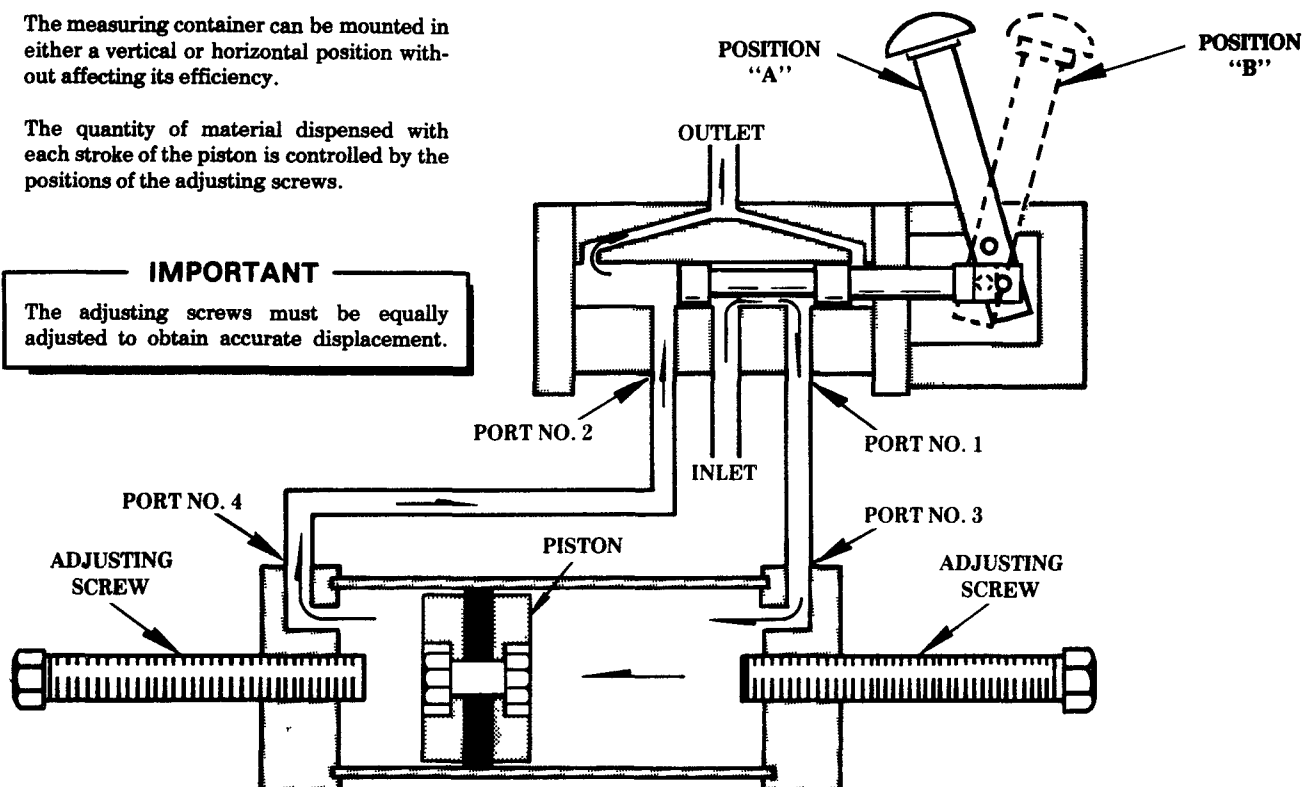
SECTION **-F40**
PAGE **-9J**

MEASURING CONTAINER (Diagrammatic View)

The measuring container can be mounted in either a vertical or horizontal position without affecting its efficiency.

The quantity of material dispensed with each stroke of the piston is controlled by the positions of the adjusting screws.

IMPORTANT
The adjusting screws must be equally adjusted to obtain accurate displacement.



OPERATION

When handle is in position "A", a passage is opened between the inlet and port no. 1 of the four way valve, permitting the material to flow through the four way valve and into the right end of the measuring chamber through port no. 3. This forces the piston to the left end of the measuring chamber, discharging a measured amount of material through port no. 4 of the measuring chamber to port no. 2 of the four way valve and on through the valve outlet.

When handle is in position "B", a passage is opened between the inlet port and port no. 2 of the four way valve, permitting the material to flow from the pump through the four way valve to the left end of the measuring chamber through port no. 4. This forces the piston to the right end of the measuring chamber, discharging a measured amount of material through port no. 1 of the four way valve and on through the valve outlet.

SERVICE PARTS

PART	QUAN.	DESCRIPTION	PART	QUAN.	DESCRIPTION
12180	4	Tie rod	34559	2	O-ring
13100	2	Elbow	38085	2	Piston packing
13278	2	Piston washer	50051	4	Screw
13998	1	Follower screw	51014	8	Nut
13999	1	Nut	61318	1	Cylinder
16460	2	End plate	62509	1	Tube
16461	2	Adjustment screw	6688i	2	Roll pin
16462	2	Nut	67310	1	Nipple
16532	1	Baseplate	70409	4	Lockwasher
31135	2	Gasket	70445	1	Four-way valve
34254	2	O-ring	81911	1	Hydro-measure assembly

RETAIN THIS INFORMATION FOR FUTURE REFERENCE

When ordering replacement parts, list: Part Number, Description, Model Number, and Series Letter.

LINCOLN ST. LOUIS provides a Distributor Network that stocks equipment and replacement parts.
A list of Authorized Service Departments will be furnished upon request.