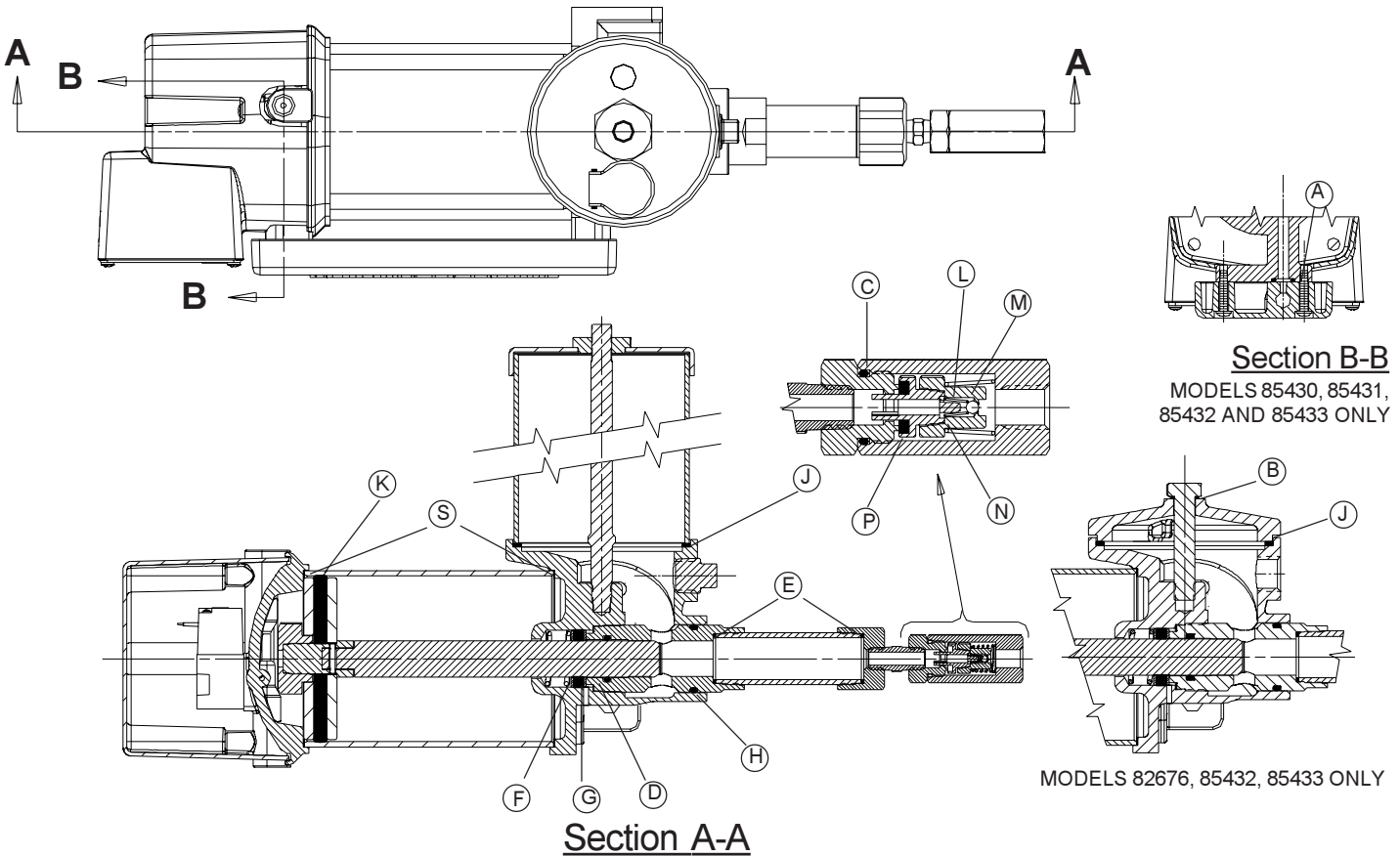
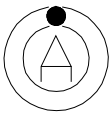


FOR MODELS 82570, 82573, 82676,  
85430, 85431, 85432, 85433  
FLUID LUBRICANT PUMPS



See specific model Owner's Manual for assembly and adjustment information.

<u>Model</u>	<u>Service Page</u>	<u>Model</u>	<u>Service Page</u>
82570	Section C8, Page 43 Series	85430	Section C8, Page 264 Series
82573	Section C8, Page 47 Series	85431	Section C8, Page 264 Series
82676	Section C8, Page 57 Series	85432	Section C8, Page 264 Series
		85433	Section C8, Page 264 Series



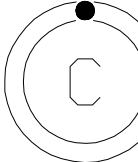
O-RING  
NITRILE  
2 REQ'D  
MODELS 85430, 85431,  
85432, & 85433 ONLY.



L  
CHECK  
SPRING



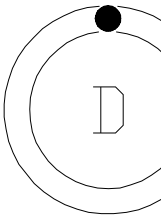
GASKET  
ALUMINUM  
MODELS 85432 &  
85433 ONLY.



O-RING  
NITRILE



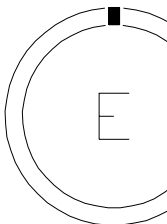
M  
CHECK  
BALL



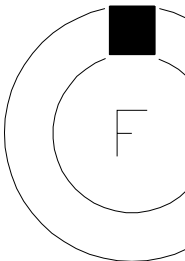
O-RING  
NITRILE



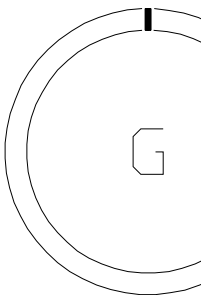
N  
CHECK  
STOP



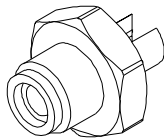
GASKET  
COPPER  
2 REQ. D



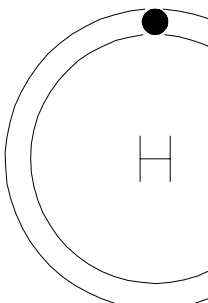
GLAND  
PACKING  
NITRILE



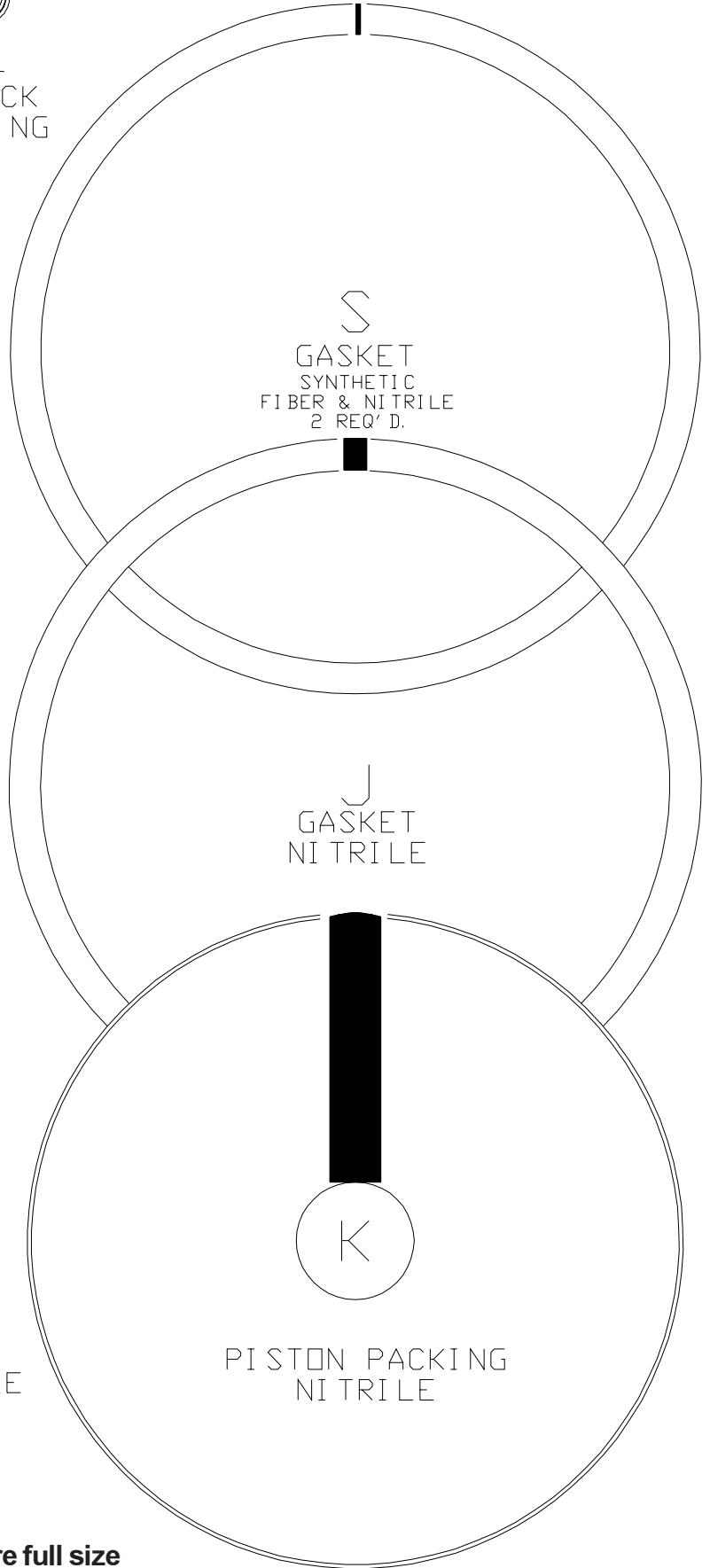
GASKET  
COPPER



P  
CHECK  
W/NITRILE  
SEAT



O-RING  
NITRILE



S  
GASKET  
SYNTHETIC  
FIBER & NITRILE  
2 REQ' D.

J  
GASKET  
NITRILE

K  
PISTON PACKING  
NITRILE

**NOTE: All illustrations are full size**