

# TEFLON KIT

FOR 83616 PUMP TUBE ASSEMBLY  
SERIES "A" & "B"

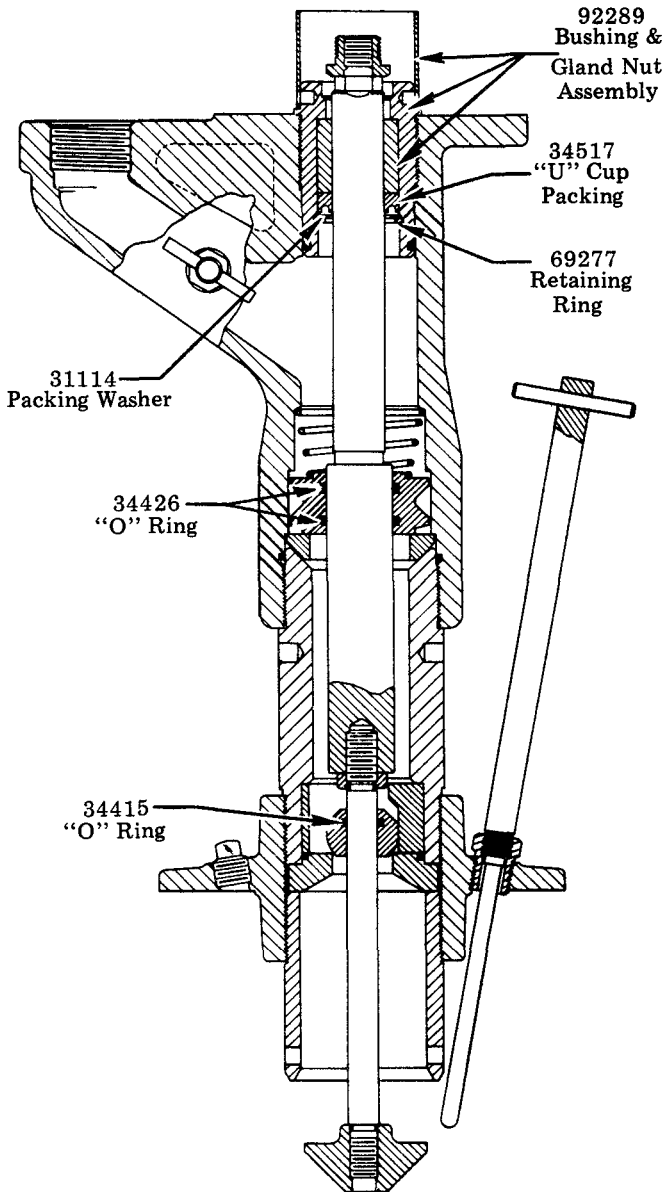


# Model 83966

The Teflon Packing Kit should be used when dispensing materials which are not compatible with the standard Polyurethane and Buna-N Packings.

## STANDARD PUMP GLAND

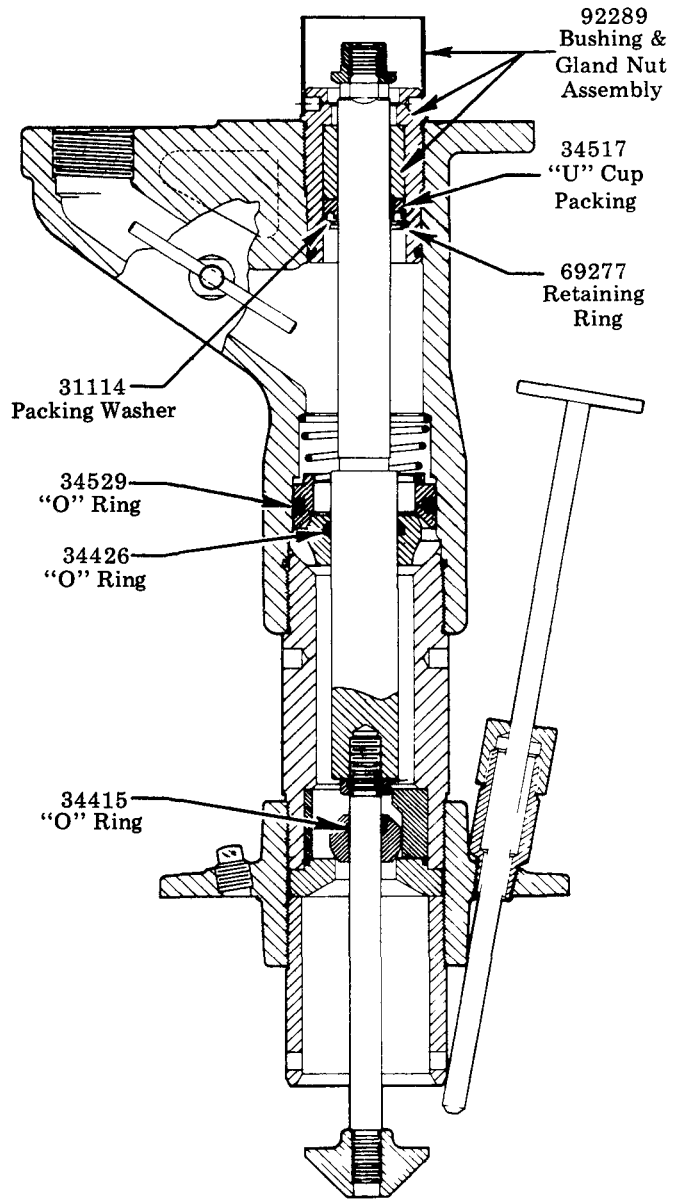
Remove the following parts; 31114,  
34415, 34426, 34517, 69277, 92289.



Series "A"  
83616 Pump Tube Assembly

## STANDARD PUMP GLAND

Remove the following parts; 31114,  
34415, 34426, 34517, 34529, 69277, 92289.



Series "B"  
83616 Pump Tube Assembly

SEE REVERSE SIDE FOR  
"TEFLON" PACKING KIT  
INSTALLATION PROCEDURE

LINCOLN ST. LOUIS  
4010 GOODFELLOW BLVD • ST. LOUIS MO 63120 • (314) 383 5900



A DIVISION OF  
McNEIL  
CORPORATION

SECTION - K4  
PAGE - 15

## INSTALLATION PROCEDURE

Invert 38140 U-Cup Packing and force over Piston Rod. (This is done to "size" the packing bore.)

Remove 38140 U-Cup Packing from Piston Rod.

Assemble all parts included in the Gland Assembly. Do not tighten the 14747 Spreader Nut at this time.

Insert Piston Rod up through the Gland Assembly and tighten the 14747 Spreader Nut.

Screw Gland Assembly into Pump Outlet Casting.

Series "A"

Insert two 34537 O-Rings into Upper Check Bushing and install in pump.

Series "B"

Install one 34534 "O" Ring on 14647 Check and install in pump.

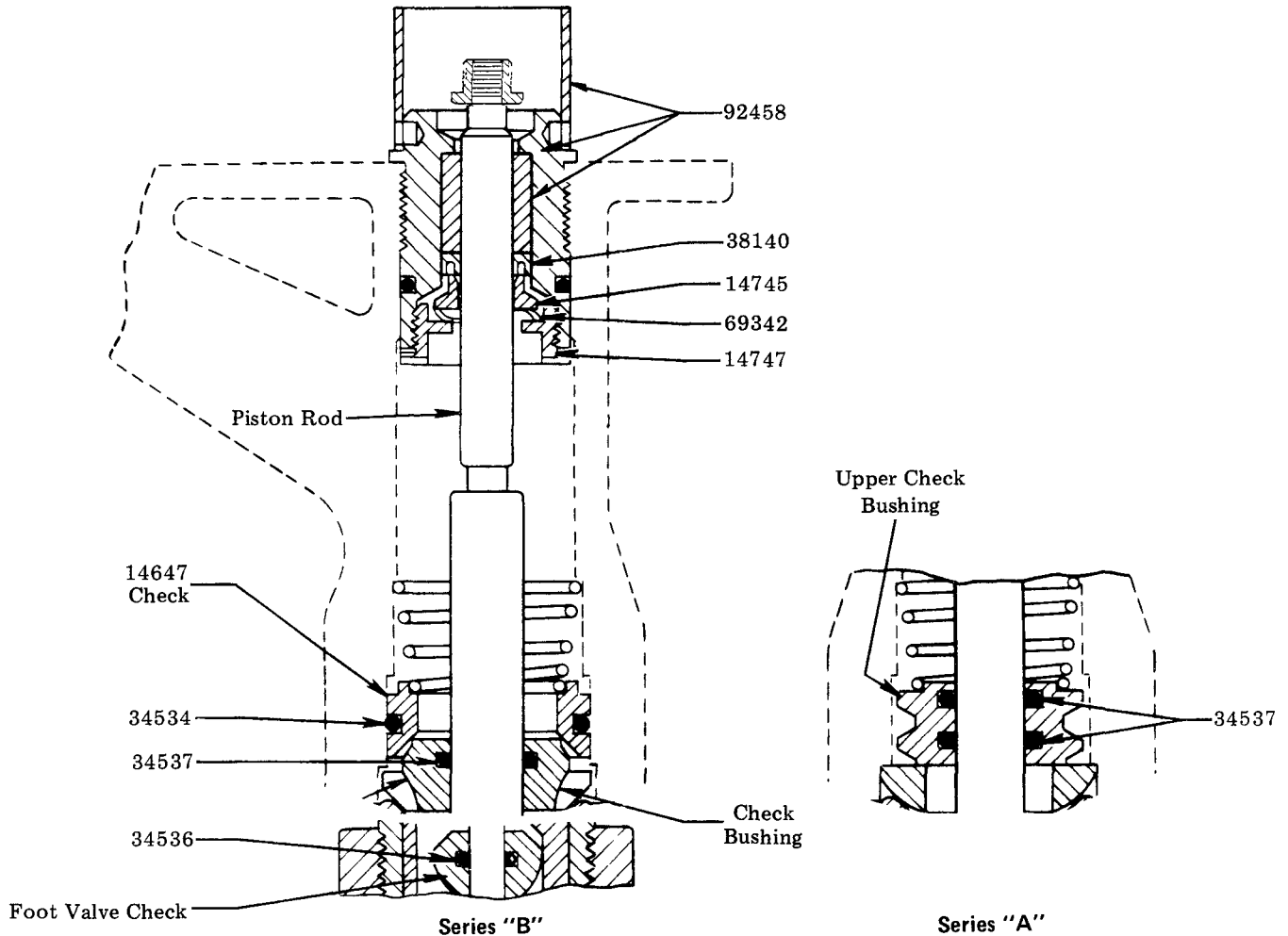
Series "B"

Insert one 34537 "O" Ring into Check Bushing and install in pump.

Insert 34536 "O" Ring into Foot Valve Check and install on Priming Rod.

Complete assembly of pump tube.

**NOTE:** 34534 "O" Ring and 14647 Check must be fully depressed into outlet body before assembling lower section parts.



PART NO.	QUAN.	DESCRIPTION
14745	1	Spreader
14747	1	Spreader Nut
34534	1	O-Ring
34536	1	O-Ring
34537	2	O-Ring
38140	1	U-Cup Packing
69342	1	Wave Washer
92458	1	Bushing and Gland Nut Assembly

### RETAIN THIS INFORMATION FOR FUTURE REFERENCE

When ordering replacement parts, list: Part Number, Description, Model Number, and Series Letter.

LINCOLN ST. LOUIS provides a Distributor Network that stocks equipment and replacement parts.

A list of Authorized Service Departments will be furnished upon request.