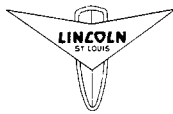


# TEFLON KIT

FOR 83615 PUMP TUBE ASSEMBLY  
SERIES "A" & "B"



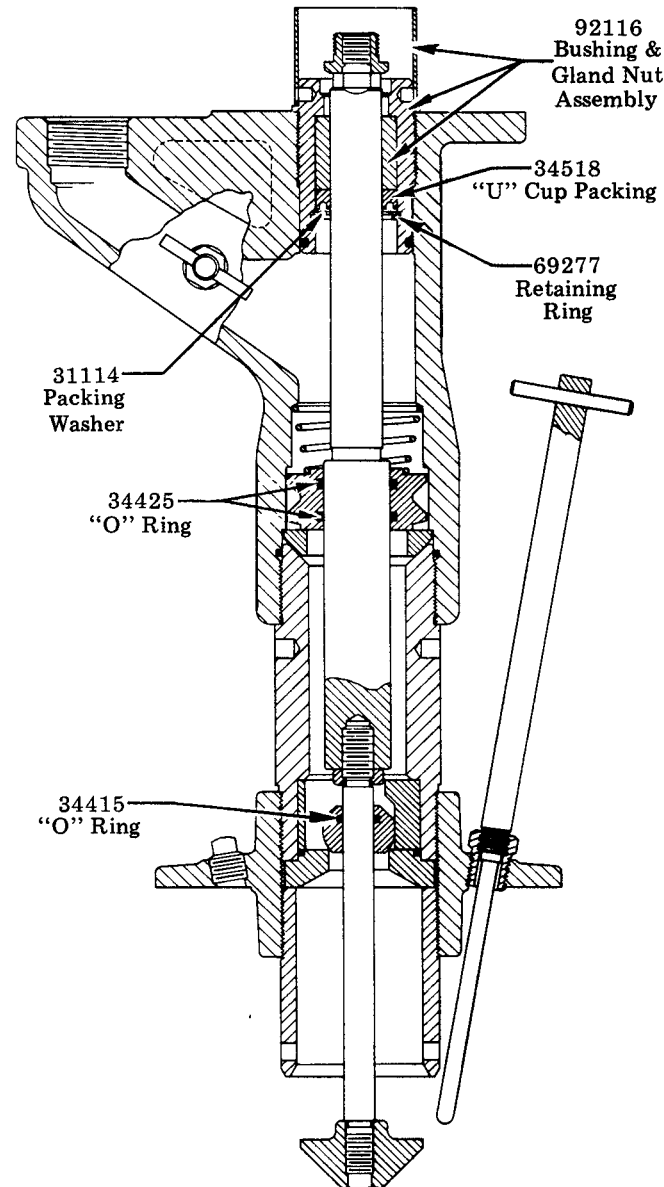
# Model 83965

## TO CONVERT PACKING GLAND

The Teflon Packing Kit should be used when dispensing materials which are not compatible with the standard Polyurethane and Buna-N Packings.

### STANDARD PACKINGS

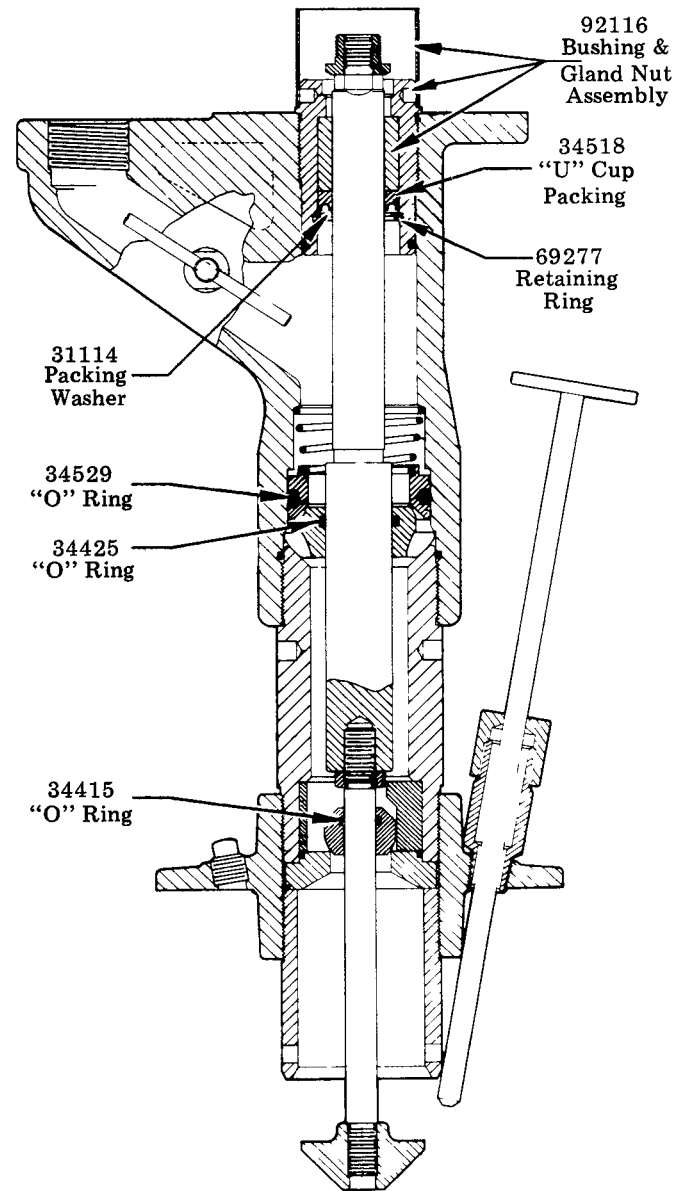
Remove the following parts; 31114, 34415, 34425, 34518, 69277, 92116.



Series "A"  
83615 Pump Tube Assembly

### STANDARD PACKINGS

Remove the following parts; 31114, 34415, 34425, 34518, 34529, 69277, 92116.



Series "B"  
83615 Pump Tube Assembly

SEE REVERSE SIDE FOR  
"TEFLON" PACKING KIT  
INSTALLATION PROCEDURE

**LINCOLN ST. LOUIS**  
4010 GOODFELLOW BLVD • ST LOUIS, MO 63120 • (314) 383-5900



A DIVISION OF  
**McNEIL**  
CORPORATION

SECTION - **K4**  
PAGE - **16**

## INSTALLATION PROCEDURE

Invert 38139 U-Cup Packing and force over Piston Rod. (This is done to "size" the packing bore.)

Remove 38139 U-Cup Packing from Piston Rod.

Assemble all parts included in the Gland Assembly. Do not tighten the 14747 Spreader Nut at this time.

Insert Piston Rod up through Gland Assembly and tighten the 14747 Spreader Nut.

Screw Gland and Piston Rod Assembly into Pump Outlet Casting.

Series "A"

Insert two 34535 O-Rings into upper Check Bushing and install in pump.

Series "B"

Install one 34534 "O" Ring on 14647 Check and install in pump.

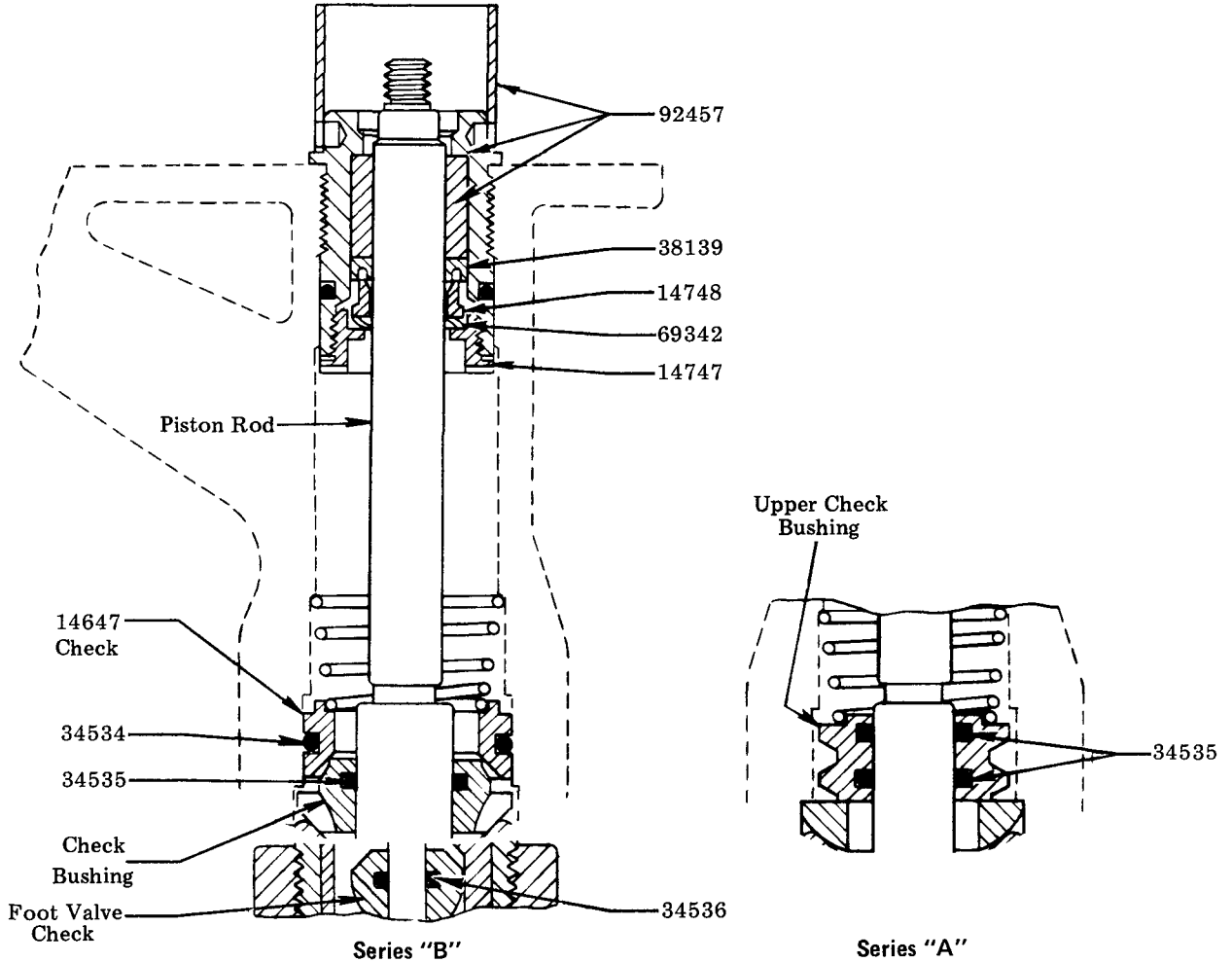
Series "B"

Insert one 34535 "O" Ring into Check Bushing and install in pump.

Insert 34536 "O" Ring into Foot Valve Check and install on Priming Rod.

Complete assembly of pump tube.

NOTE: 34534 "O" Ring and 14647 Check must be fully depressed into outlet body before assembling lower section parts.



MODEL 83965

PART NO.	QUAN.	DESCRIPTION
14747	1	Spreader Nut
14748	1	Spreader
34534	1	O-Ring
34535	2	O-Ring
34536	1	O-Ring
38139	1	U-Cup Packing
69342	1	Wave Washer
92457	1	Bushing & Gland Nut Assembly

### RETAIN THIS INFORMATION FOR FUTURE REFERENCE

When ordering replacement parts, list: Part Number, Description, Model Number, and Series Letter.

LINCOLN ST. LOUIS provides a Distributor Network that stocks equipment and replacement parts.

A list of Authorized Service Departments will be furnished upon request.