

FOR USE ON MODELS 1704, 1716, 1719, 1735 AND 1736

A Low Level Cut-Off is used to shut off air supply to the pump air motor when the follower nears the bottom of the material drum, thus preventing air from being pumped into the material supply line.

All Low Level Cut-Off kits contain a 69228 quick acting air valve which is actuated through the vertical travel of the follower assembly.

When using kit No. 83811, the 69228 valve contacts an adjustable cam as the follower approaches the drum bottom. With kit No. 84143 and kit No. 83970, the 69228 valve is mounted on an adjustable plate and contacts the rim of the material drum as the follower approaches the drum bottom.

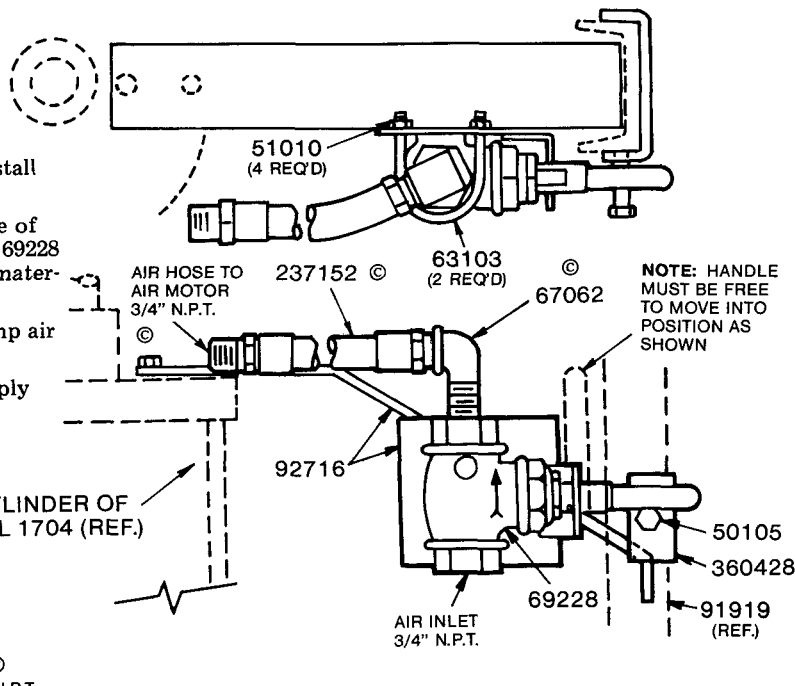
Once having been tripped, the 69228 valve will remain closed until it is manually reset. This assures that the pump cannot operate during drum changes.

83811 LOW LEVEL CUT-OFF KIT

For Model 1704 Pressure Primer

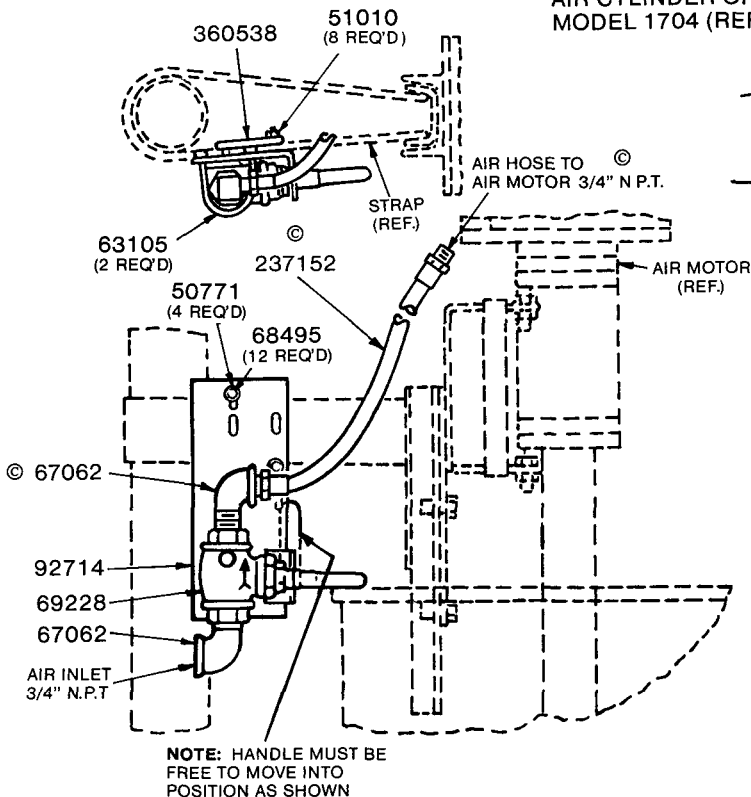
Assemble parts:

- (1) Remove guide angle from pressure primer and install 92716 guide arm in its place.
- (2) Assemble 360428 adjustable bracket to the frame of the pressure primer. Position so that level arm of 69228 deflects upward when follower nears bottom of material drum.
- (3) Assemble 237152 air hose into air inlet of the pump air motor.
- (4) Install air hose from air regulator of main air supply line into air inlet of the 69228 valve.



AIR CYLINDER OF MODEL 1704 (REF.)

NOTE: HANDLE MUST BE FREE TO MOVE INTO POSITION AS SHOWN



NOTE: HANDLE MUST BE FREE TO MOVE INTO POSITION AS SHOWN

83970 LOW LEVEL CUT-OFF KIT

FOR MODELS 1716 (POWER-MASTER PUMP) AND 1719 (PILER-DRIVER PUMP) PUMP HOISTS.

Assemble parts:

- (1) Install 69228 valve to the strap of the pump, hoist by means of the 92714 guide assembly and the 360538 plate with the 50771 screws. Before tightening the screws, the valve should be positioned so that the lever arm is deflected upward by the rim of the material drum when the follower nears the bottom of the drum.
- (2) Assemble 237152 air hose into air inlet of the pump air motor.
- (3) Install air hose from air regulator of main air supply line into air inlet of the 69228 valve.

© Indicates change

84143 LOW LEVEL CUT-OFF KIT

FOR MODELS 1735 AND 1736 TWIN POST PRESSURE PRIMERS.

Assemble parts as shown in drawings below:

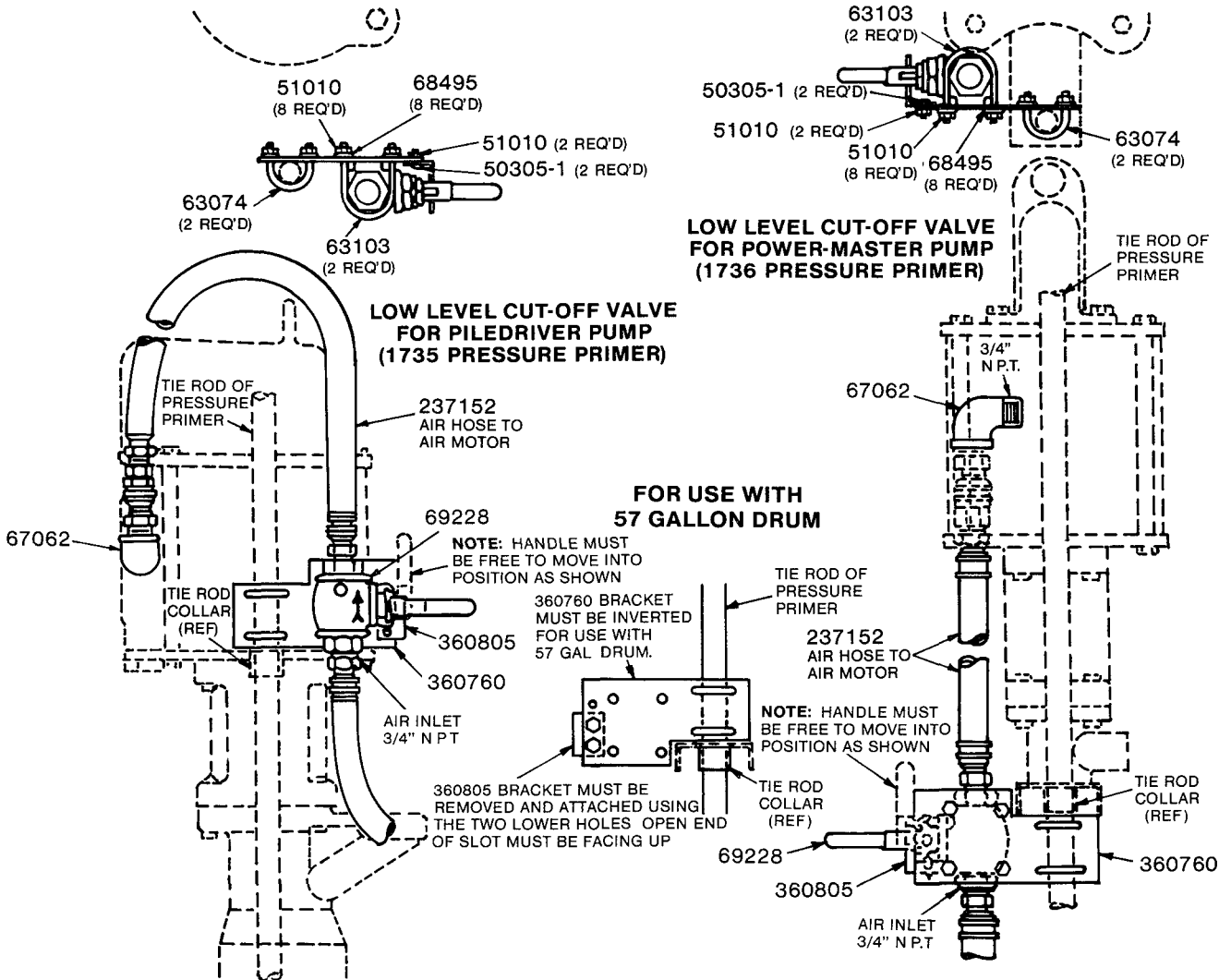
- 1) Assemble 360760 Mounting Plate to the tie rod of pressure primer with the 63103 U-bolt, 68495 Washers and 51010 Nuts.

When kit is used with PileDriver Pumps on the 1735 Pressure Primer, position the 360760 Mounting Plate so that the bottom of the bracket rests on top of the tie rod collar of the pressure primer.

When bracket is used with Power-Master Pumps on the 1736 Pressure Primer, position the 360760 Mounting Plate so that the top of the bracket is directly beneath the tie rod collar of the pressure primer.

Bracket should be turned on the tie rod so that the lever arm of the 69228 Valve is deflected upward by the rim of the drum when the follower nears the bottom of the drum.

- 2) Assemble 237152 Air Hose into air inlet of the pump airmotor.
- 3) Install air hose from air regulator of main air supply line into air inlet of the 69228 Valve.



SERVICE PARTS

Part	Description	Part	Description	Part	Description
50105	Screw	63074	U-bolt	92714	Guide assembly
50305-1	Screw	63103	U-bolt	92716	Guide assembly
50771	Screw	63105	U-bolt	237152	Air hose
51010	Nut	67062	Street elbow	360428	Bracket
		68495	Washer	360538	Plate
		69228	Quick-acting valve	360760	Mounting plate
		74030	Air hose	360805	Bracket

RETAIN THIS INFORMATION FOR FUTURE REFERENCE

When ordering replacement parts, list: Part Number, Description, Model Number, and Series Letter.

LINCOLN provides a Distributor Network that stocks equipment and replacement parts.