

# TEFLON KIT

FOR 83603 PUMP TUBE ASSEMBLY



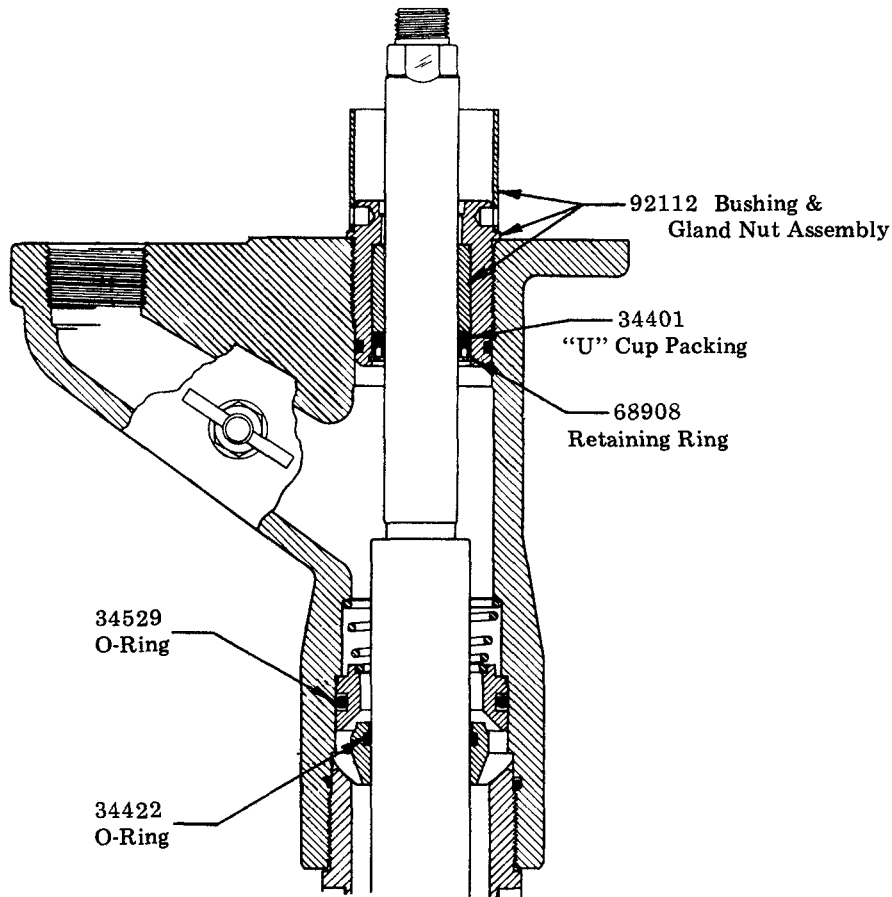
# Model 83962

## TO CONVERT PACKING GLAND

The Teflon Gland and Piston Packing Kit should be used when dispensing materials which are not compatible with the standard Polyurethane and Buna-N Packings.

### STANDARD PUMP GLAND

Remove the following parts;  
92112, 34401, 68908, 34422, 34529.



SEE REVERSE SIDE FOR  
"TEFLON" PACKING KIT  
INSTALLATION PROCEDURE.

**LINCOLN ST. LOUIS**  
4010 GOODFELLOW BLVD • ST. LOUIS, MO 63120 • (314) 383-5900



A DIVISION OF  
**McNEIL**  
CORPORATION

SECTION - **K4**  
PAGE - **24**

**INSTALLATION PROCEDURE**

Invert 38130 "U" Cup packing and force over Piston Rod. (This is done to "size" the packing bore.) Remove 38130 "U" Cup Packing from Piston Rod.

Assemble all parts included in the Gland Assembly. Do not tighten the 14747 Spreader Nut at this time.

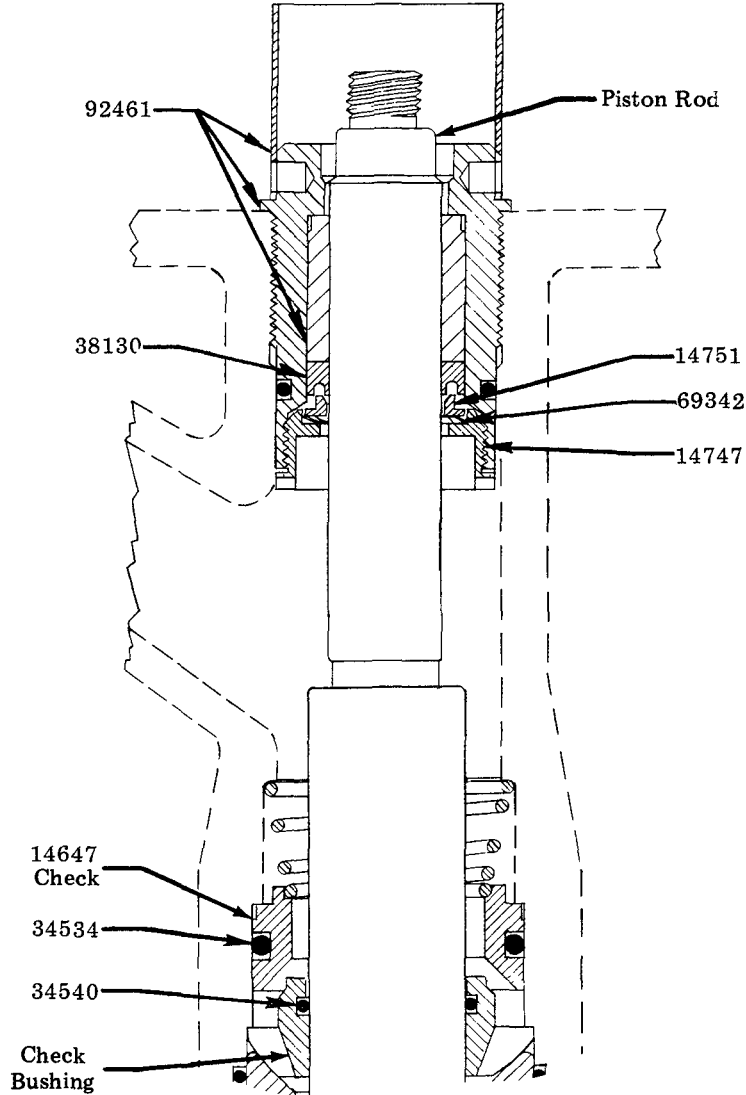
Insert Piston Rod up through Gland Assembly and tighten the 14747 Spreader Nut.

Screw Gland and Piston Rod Assembly into Pump Outlet Casting.

Insert 34534 "O" Ring into Check, and 34540 "O" Ring into Check Bushing, and slip onto Piston Rod.

Re-Assemble pump tube to complete installation of "Teflon" Packing Kit.

**NOTE:** 34534 "O" Ring and 14647 Check must be fully depressed into Outlet Body before assembling lower section parts.



MODEL 83962

PART NO.	QUAN.	DESCRIPTION
14747	1	Spreader Nut
14751	1	Spreader
34534	1	O-Ring
34540	1	O-Ring
38130	1	U-Cup Packing
69342	1	Wave Washer
92461	1	Bushing & Gland Nut Assembly

**RETAIN THIS INFORMATION FOR FUTURE REFERENCE**

When ordering replacement parts, list: Part Number, Description, Model Number, and Series Letter.  
 LINCOLN ST. LOUIS provides a Distributor Network that stocks equipment and replacement parts.  
 A list of Authorized Service Departments will be furnished upon request.