

## Model No. 84141 3/4" AIR LINE ACCESSORY KIT

USED ON 1716, 1719 PUMP HOISTS AND  
1735, 1736, 1704, 83274 PRESSURE PRIMERS

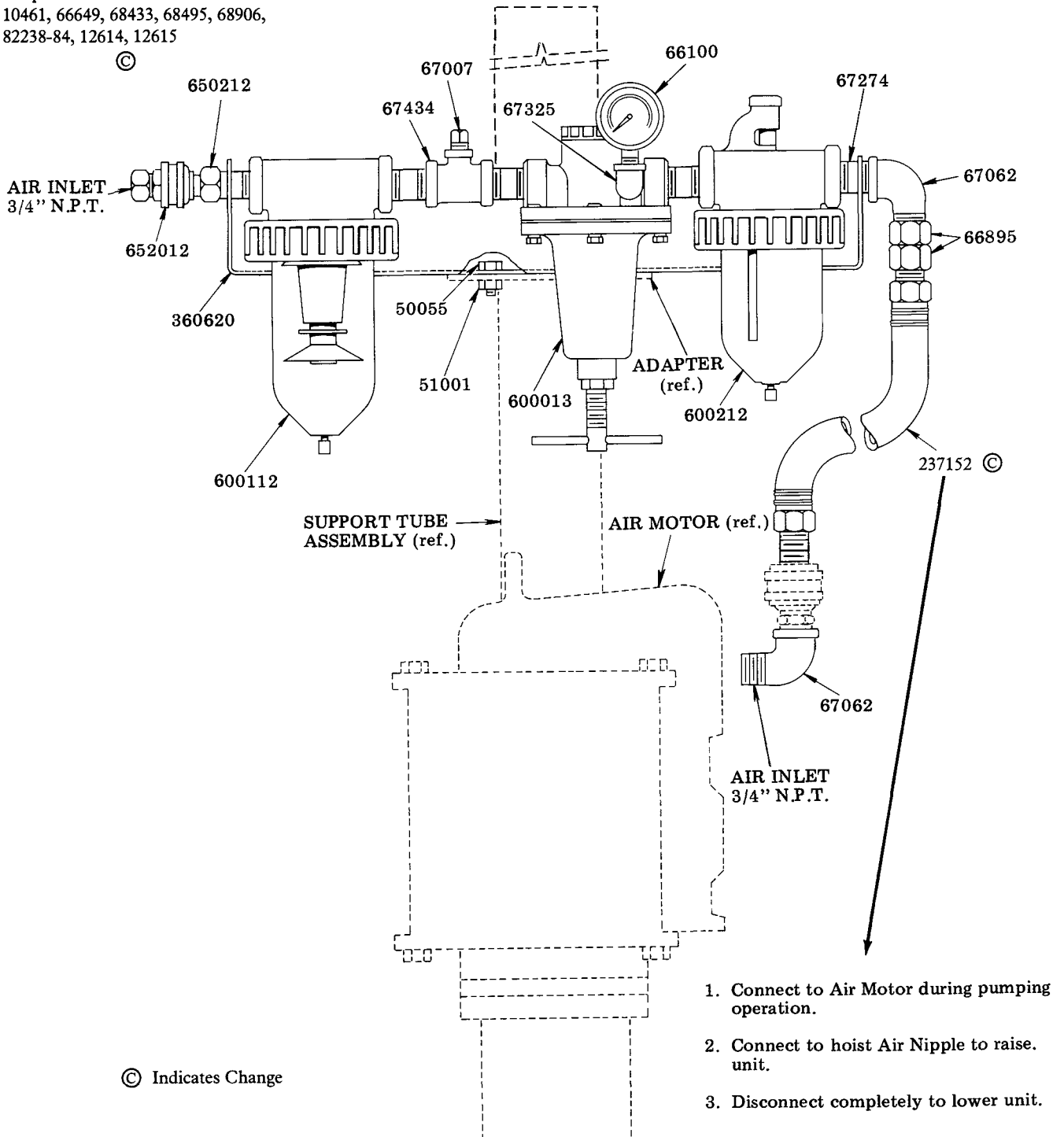
### 84141 INSTALLED ON 1716 AND 1719 PUMP HOISTS

Assembly is fastened to the adapter on the support tube assembly with the two 50055 bolts and 51001 nuts.

Kit parts not used on this installation:

10461, 66649, 68433, 68495, 68906,  
82238-84, 12614, 12615

©



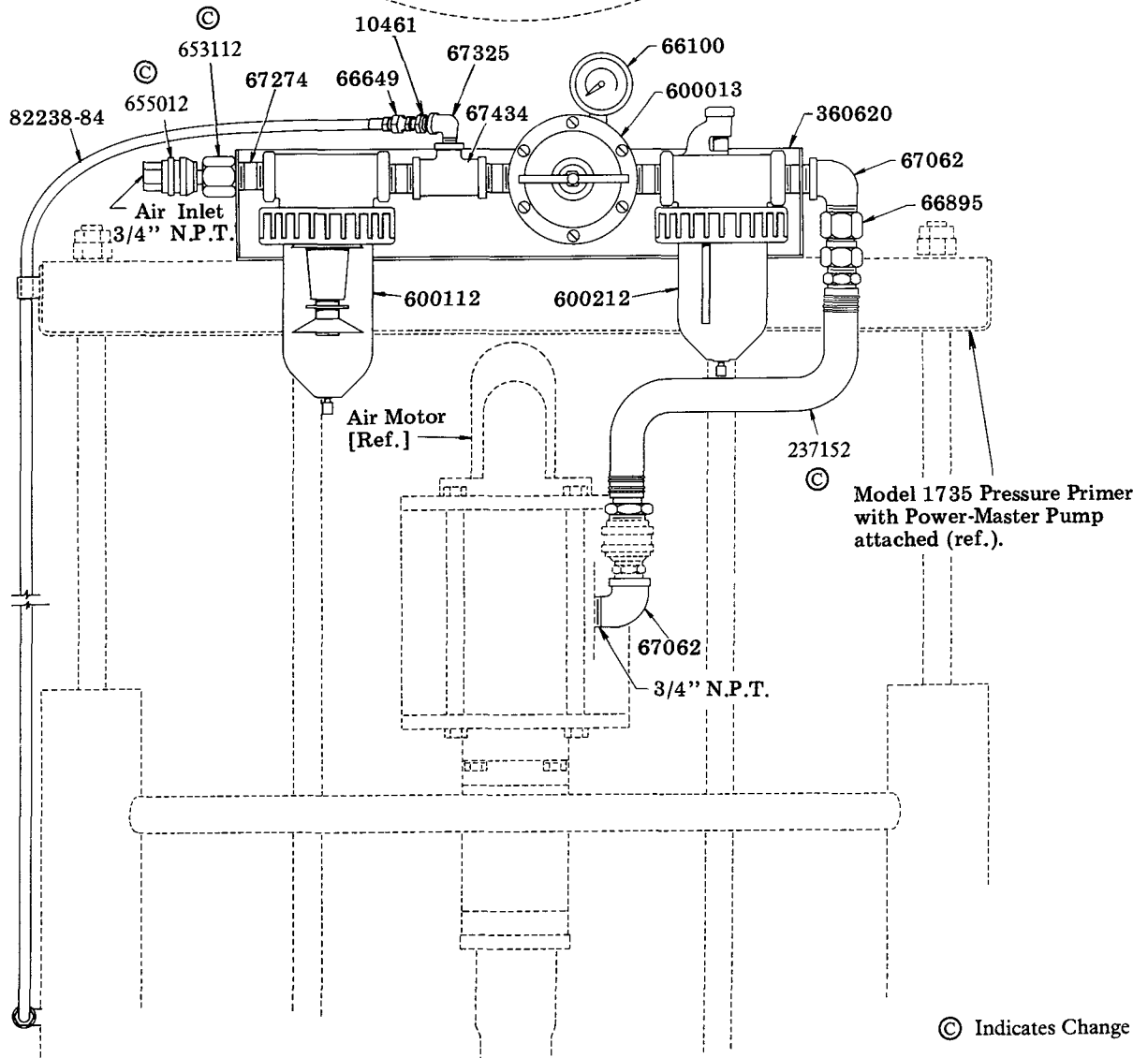
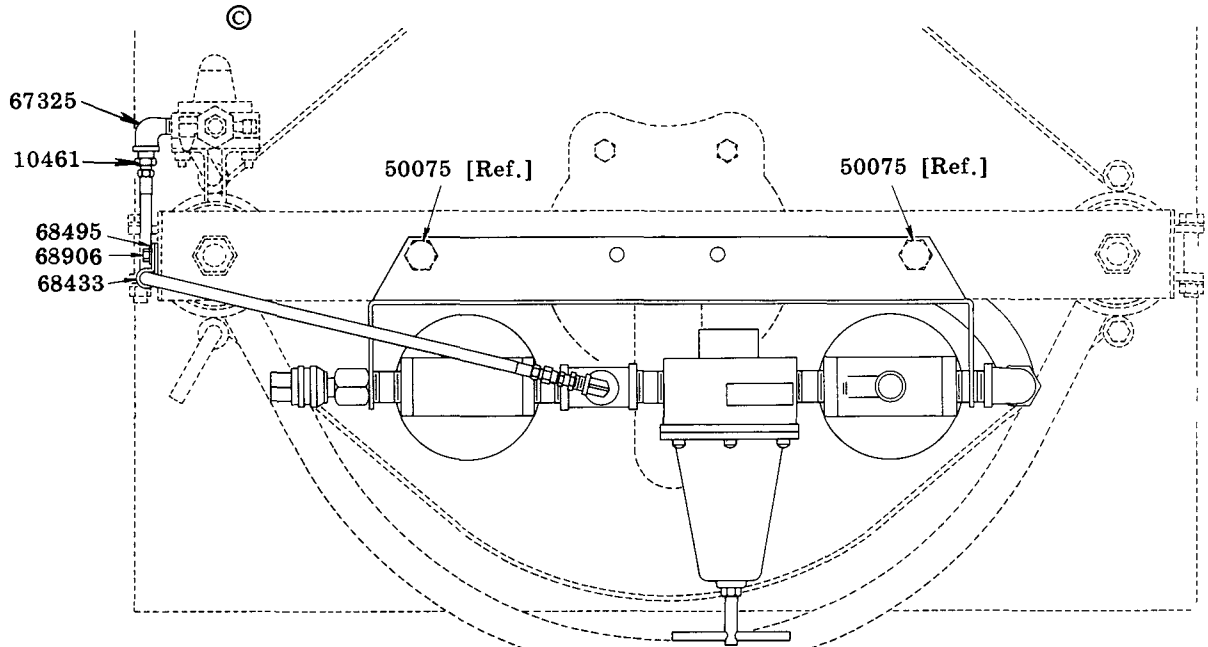
© Indicates Change

1. Connect to Air Motor during pumping operation.
2. Connect to hoist Air Nipple to raise unit.
3. Disconnect completely to lower unit.

**84141 INSTALLED ON 1735 OR 1736 PRESSURE PRIMER**

Assembly is fastened to the top channel of the pressure primer with the two 50075 screws which are part of the Pressure Primer.

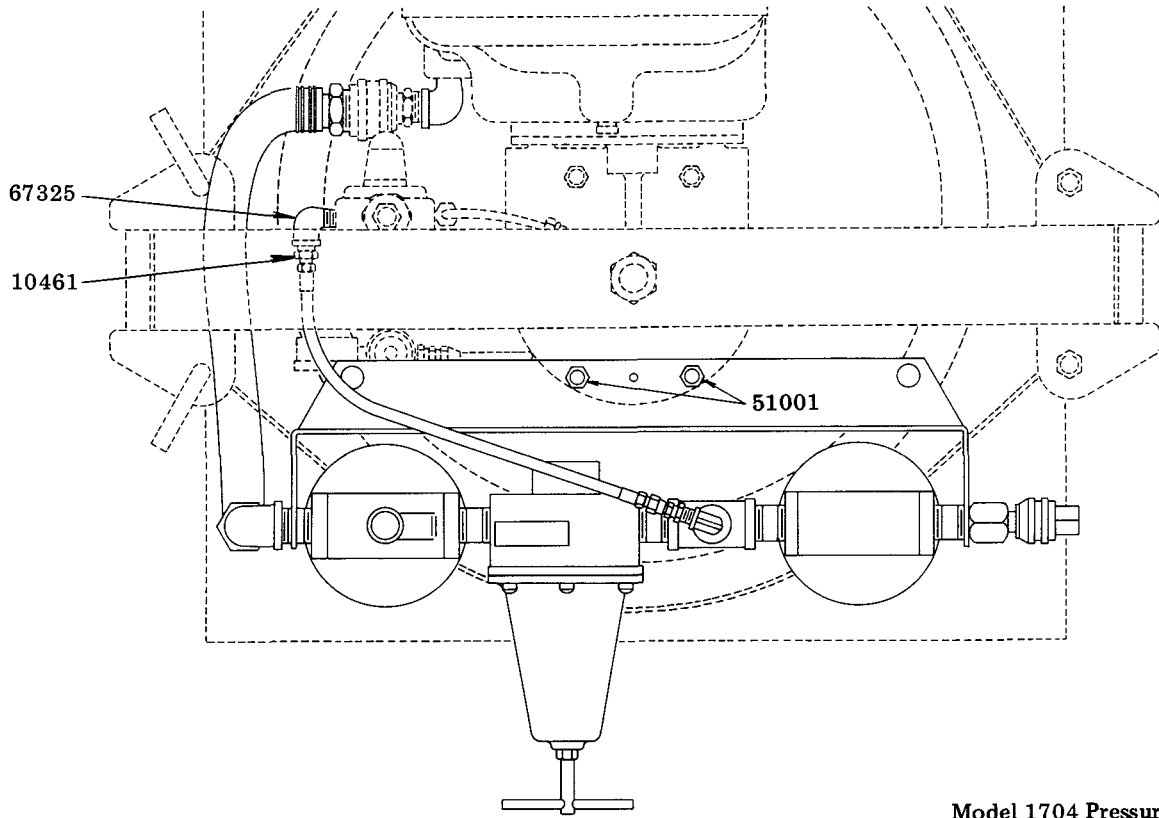
Kit parts not used on this installation:  
50055, 51001, 67007, 12614, 12615



# 84141 INSTALLED ON 1704 AND 83274 PRESSURE PRIMER

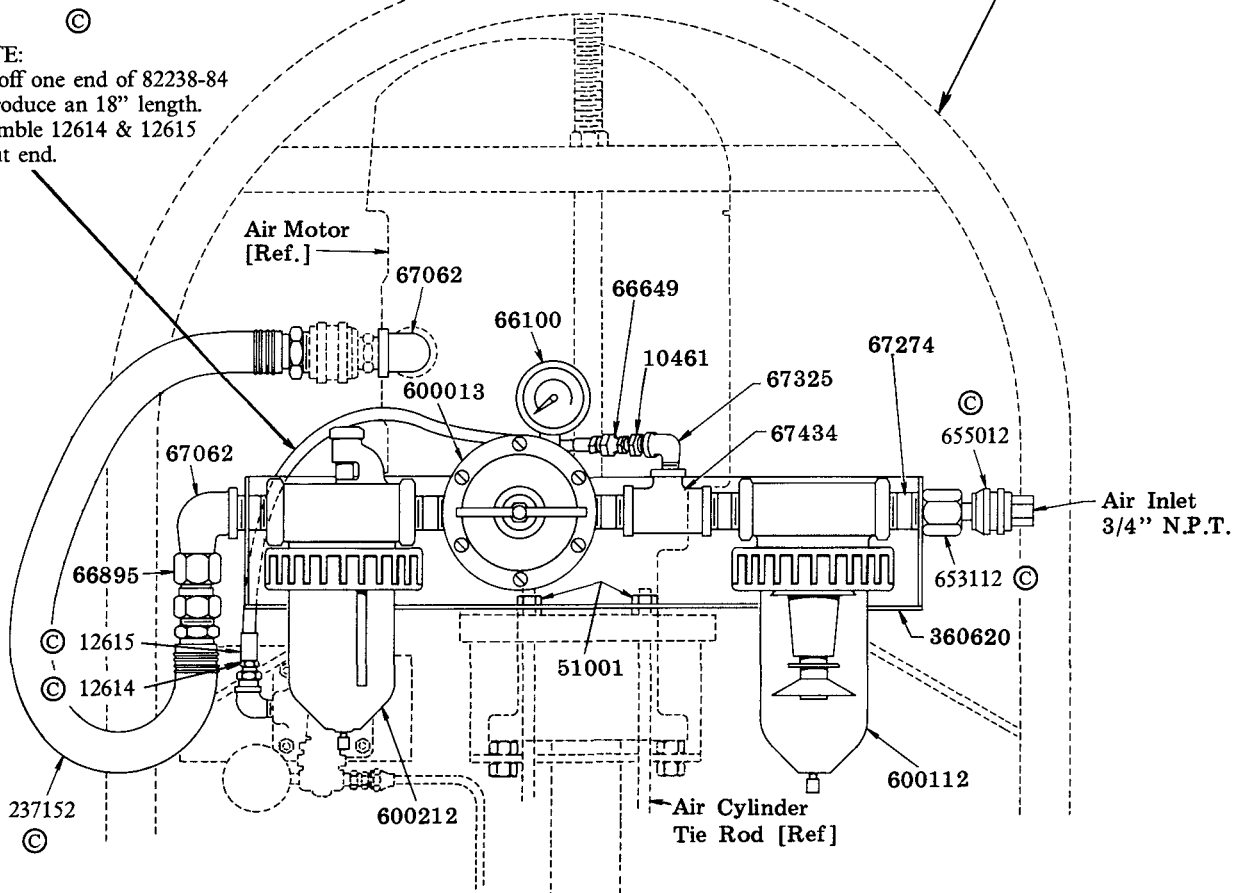
Assembly is fastened to the two tie rod ends of the pressure primer air cylinder with two 51001 nuts.

Kit parts not used on this installation:  
50055, 67007, 68433, 68495, 68906



Model 1704 Pressure Primer with Power-Master Pump attached. (ref.)

**\*NOTE:**  
Cut off one end of 82238-84 to produce an 18" length. Assemble 12614 & 12615 to cut end.



## SERVICE PARTS

Part	Qty.	Description
10461	2	Bushing
12614	1	Hose stud
12615	1	Coupling nut
50055	2	Screw
51001	2	Nut
66100	1	Pressure gauge
66649	1	Adapter union
66895	1	Adapter union
67007	1	Pipe plug
67062	2	Street elbow
67274	5	Nipple
67325	2	Street elbow
67434	1	Tee
68433	1	Tube clamp
68495	1	Lockwasher
68906	1	Screw
82238-84	1	Hose assembly
237152	1	Hose assembly
360620	1	Bracket
600013	1	Air regulator
600112	1	Air filter
600212	1	Air lubricator
650212	1	Air nipple
652012	1	Socket assembly

### RETAIN THIS INFORMATION FOR FUTURE REFERENCE

When ordering replacement parts, list: Part Number, Description, Model Number, and Series Letter.

LINCOLN provides a Distributor Network that stocks equipment and replacement parts.