

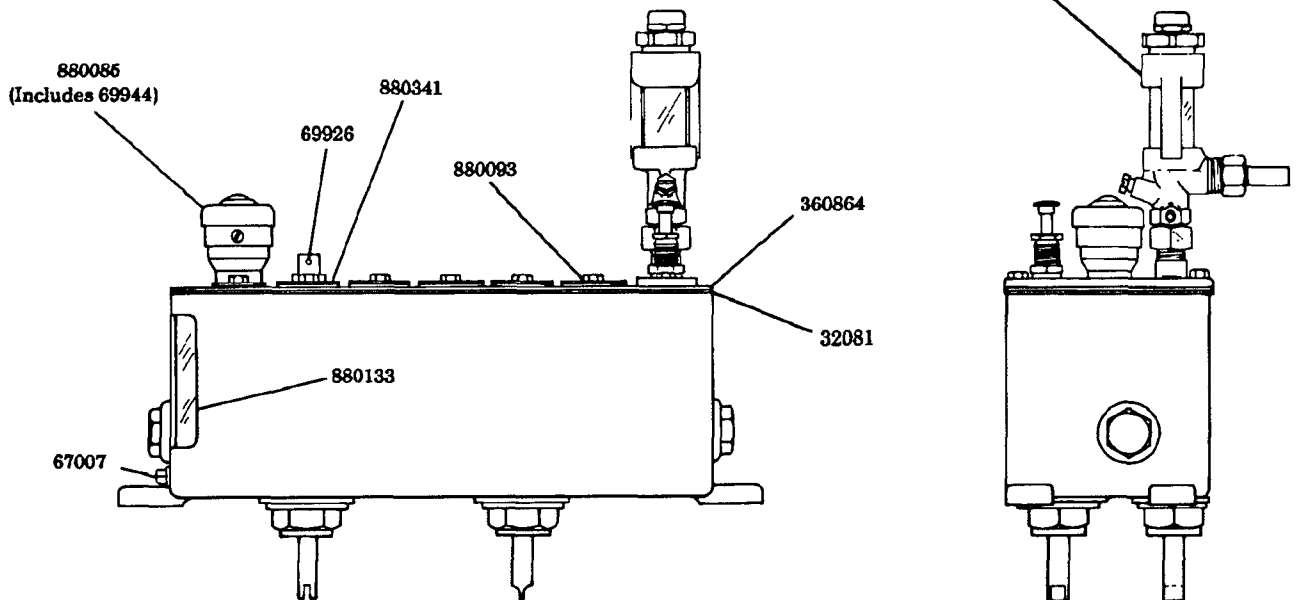
R. H. BOTTOM VERTICAL ROTARY
WITH FILTER DRIVE
1 GAL. RESERVOIR, 30:1 RATIO
CLOCKWISE ROTATION

Includes Buna-N oil seals

DRIVE ADAPTATION

Refer to Section M3,
Page 16 Series.

880550[Ⓢ]
Refer to
Section M1
Page 11 Series.

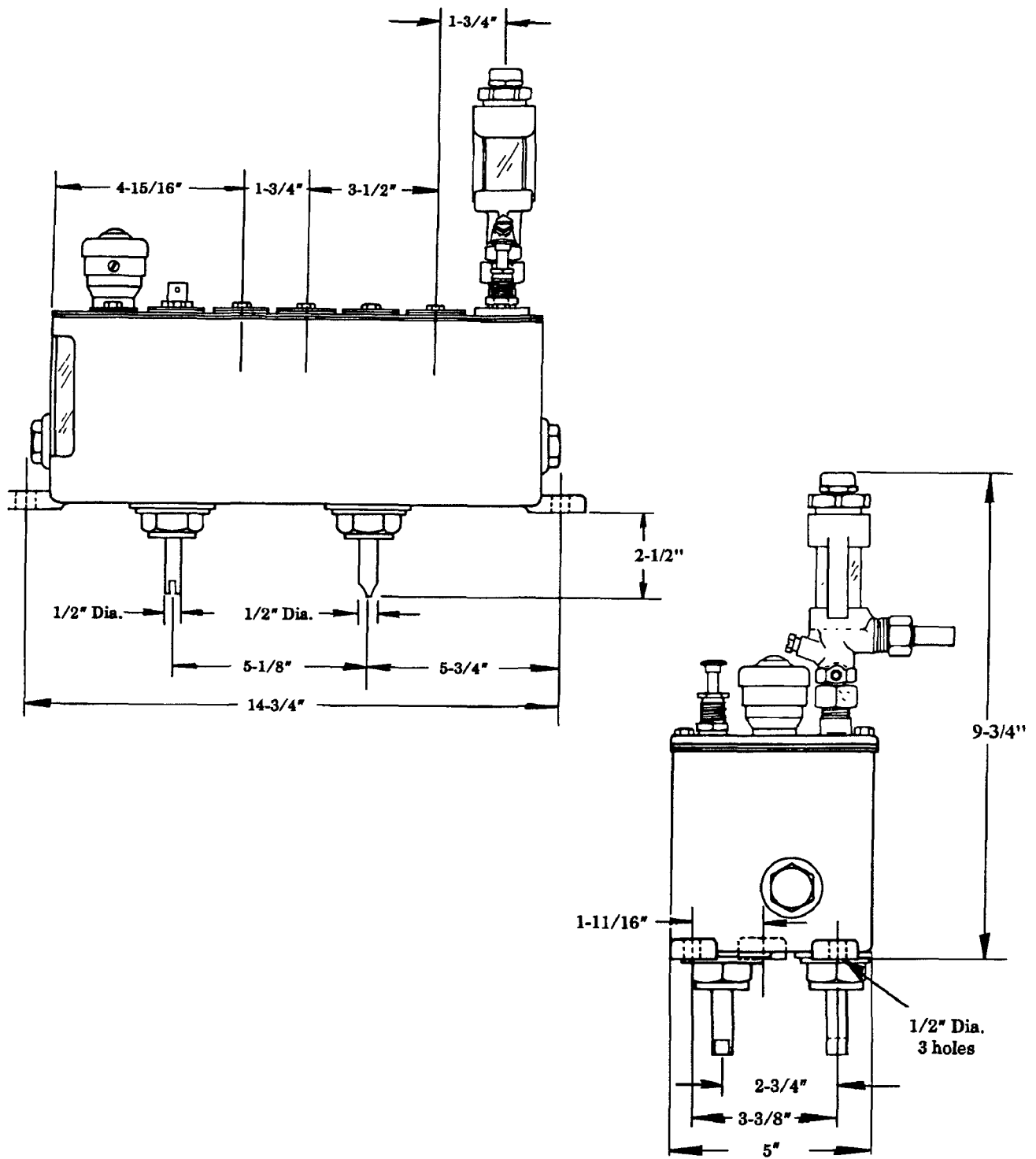


NOTE: Part numbers listed on this page are correct, although drawing may not accurately illustrate current production components.

SERVICE PARTS

Part	Qty.	Description
32081	1	Cover gasket
67007	1	Drain plug
69926	1	Pin
69944	1	Strainer
360864	1	Cover plate
880550	As req'd.	Model "55i" pump assembly
880086	1	Filler assembly
880093	As req'd.	Slot cover assembly
880133	1	Gauge glass assembly
880341	1	Sleeve cover assembly

Ⓢ Indicates change



RETAIN THIS INFORMATION FOR FUTURE REFERENCE

When ordering replacement parts, list: Part Number, Description, Model Number, and Series Letter.

LINCOLN provides a Distributor Network that stocks equipment and replacement parts.