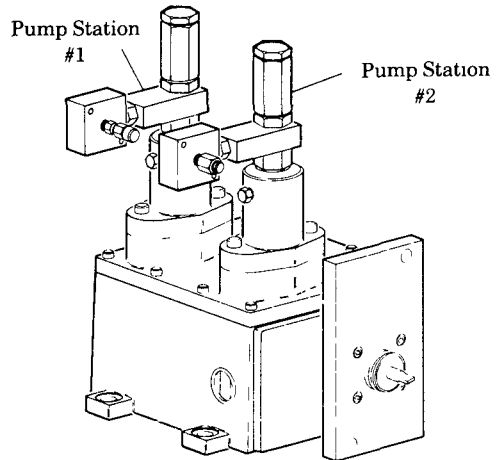




DESCRIPTION

MCLP Pumps are plunger-type pumps, the plunger being actuated by a roller tappet assembly which is operated by the rotation of a cam

Available with one or two adjustable pump heads, having either a 7mm or 11mm piston, and with single or double lobe cams. Dual head pumps can deliver a different oil from each pump head if required and the pump output can be regulated. An anchor cross containing a purge port, rupture indicator, and outlet connection is supplied with each pump head.



MODEL IDENTIFICATION

- 130253 — Right Hand Drive with Extended Shaft.
- 130254 — Right Hand Drive.

The Drive Ratio for the MCLP pumps will be specified by the first letter following the 130000 number:

CODE LETTER IDENTIFICATION

Code	D	E	F	G	H	J	K
Ratio	4.1	5 6.1	7 7.1	8.1	11 1.1	15 5.1	21 5.1

The output pressure of the 7mm & 11mm MCLP Pump Head is limited with some of the above ratios. For a complete explanation, contact factory.

The second and third letters following the 130000 number represent Pump Stations #1 and #2 respectively:

CODE	CAM	PUMP*
A	15036 (single lobe)	130305 (w 7mm plunger)
B	16358 (double lobe)	130305 (w 7mm plunger)
C	15036 (single lobe)	130306 (w 11mm plunger)
D	16358 (double lobe)	130306 (w/11mm plunger)
**E	15036 (single lobe)	None
**F	16358 (double lobe)	None
***O	None	None

- *Refer to Section M1, Page 10 Series for all pumps
- **Pump stations designated by E and F include pump mounting screws. Pump or pump station cover not included.
- ***Pump stations designated by O; cam, pump and roller tappet assembly are replaced by spacer and pump station cover

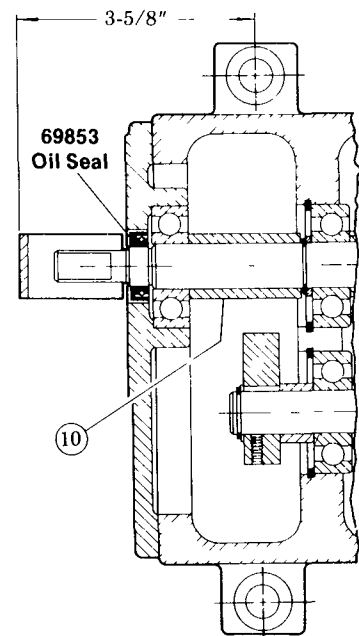
INSTALLATION

Mount the MCLP Pump to a rigid support or frame adjacent to the engine drive shaft or electric motor shaft. Carefully align the pump to the drive shaft. Fill the gear box to the half-way mark of the sight glass with Conoco SAE 80W-90 gear oil or equivalent before running the pump. The pump unit and the lubrication system should be purged of any entrapped air to ensure reliable oil delivery.

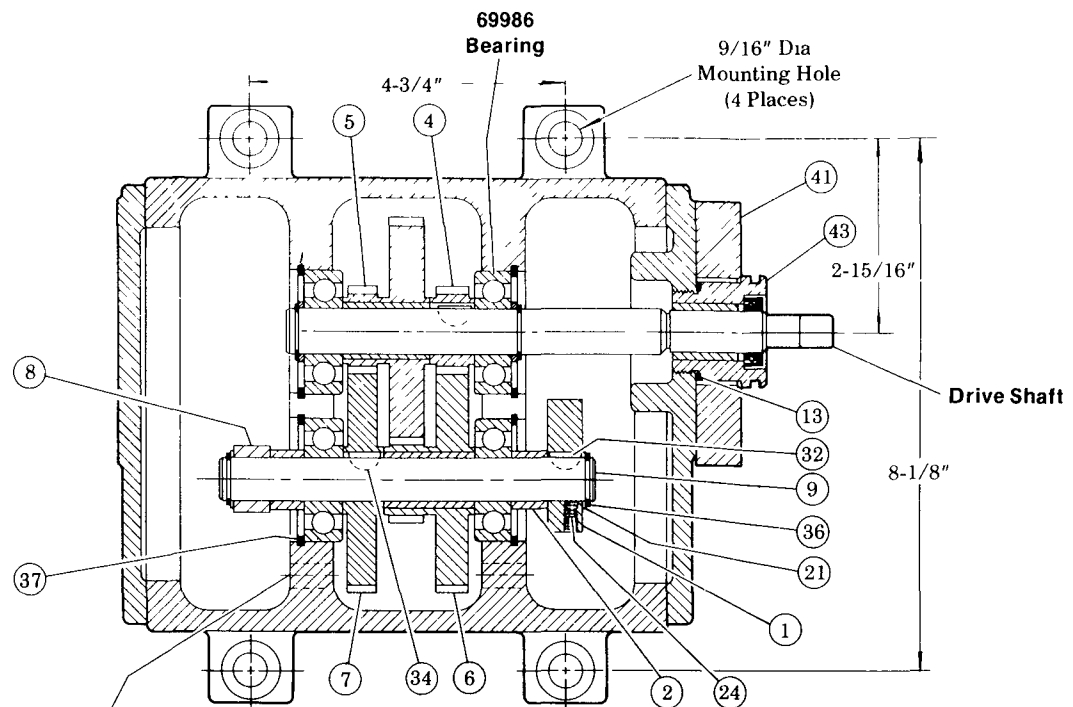
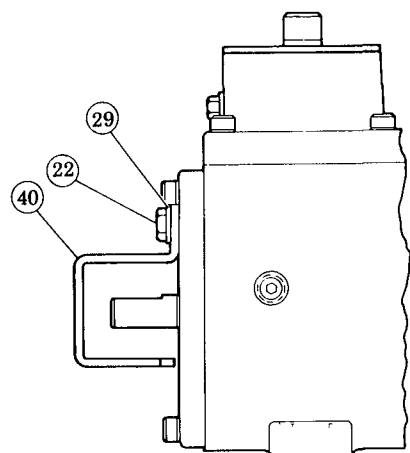
BLEEDING MCLP PUMP UNIT

- 1) Connect filter primer to MCLP Pump inlet.
- 2) Loosen the pipe plug in the pump head and allow the oil to flow freely from the pipe plug until air bubbles no longer appear in the oil.
- 3) Set the MCLP Pump head to max. output
- 4) Loosen the outlet connection on the anchor cross and allow the pump to run until air bubbles no longer appear at the outlet. Tighten the outlet connection and turn off the pump.





MODEL 130253
Same as Model 130254
Except for extended drive shaft.



Camshaft is always located on side of box indicated by holes.

NOTE:

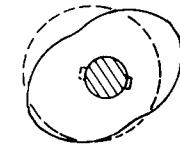
Use Conoco SAE 80W-90 gear oil or equivalent in gear housing.

Change oil every 3 to 6 months.

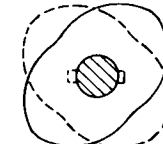
When using two pumps, purge ports must be installed facing outside of gear housing.

Cam, set screw, key & roller tappet must be omitted when no cam is required. Use 15438 Spacer as shown.

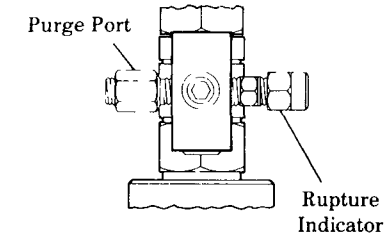
CAM LOCATION



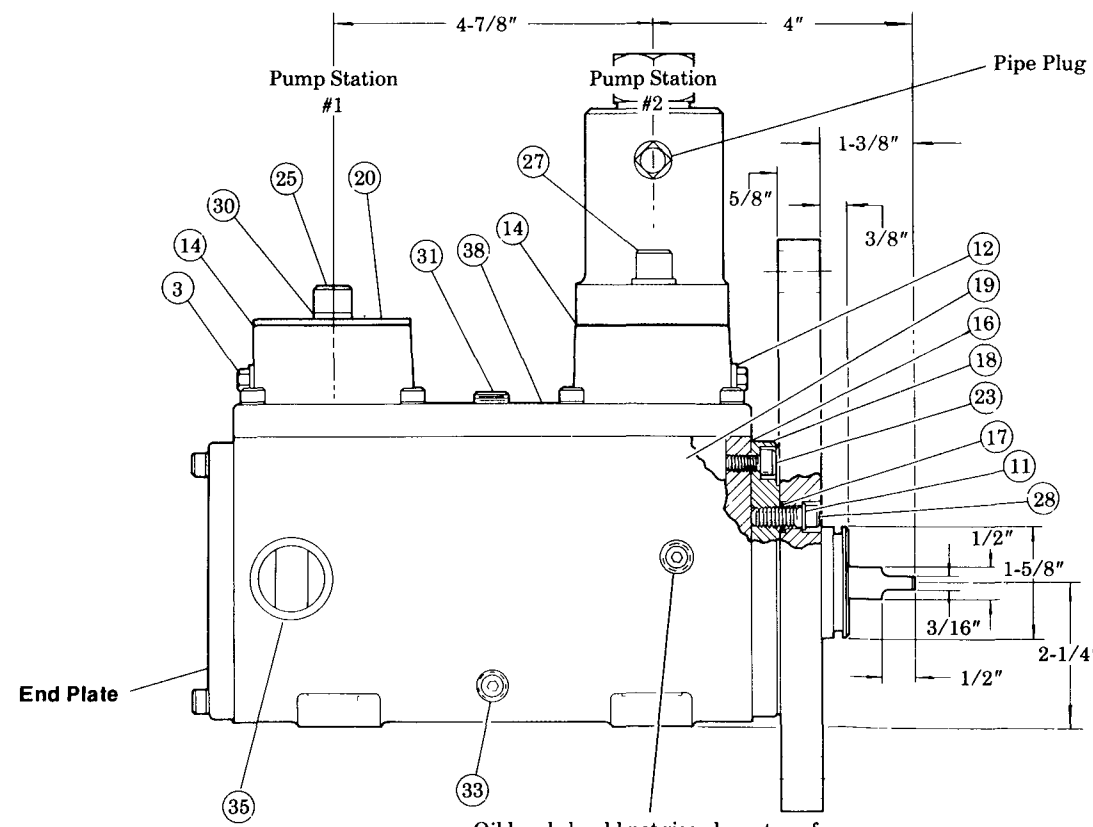
When one single and one double lobe cam is required, cams should be offset as shown in the above view.



When two double lobe cams are required, cams should be offset at 90° as shown in the above view.

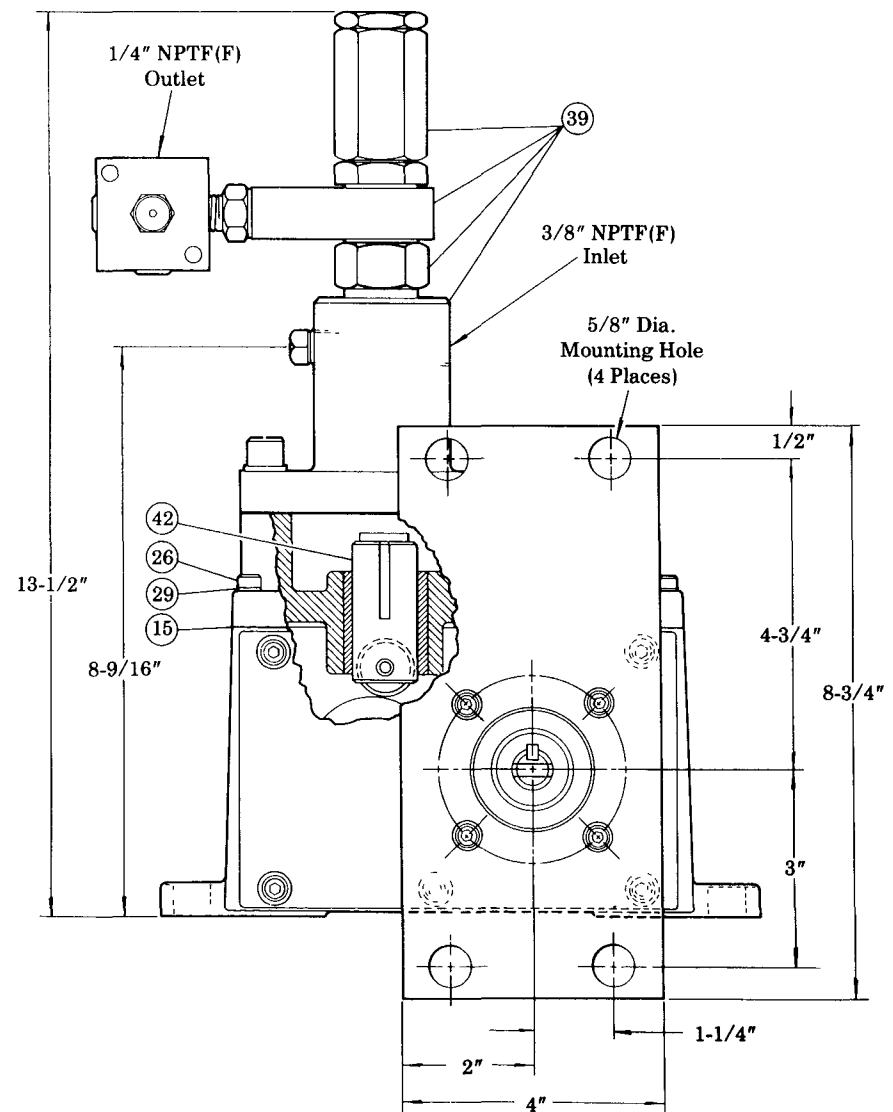


MODEL 130254



Oil level should not rise above top of view gauge. Drain through this plug.

On one station unit, locate pump in pump station nearest drive.



MODEL	DRIVE SHAFT	END PLATE	69853 OIL SEAL	69986 BEARING
130253	16628	40833	1 req'd	5 req'd.
130254	16533	40719	—	4 req'd.

GEAR CHART

Ratio		Code			
		4	5	6	7
		4:1	15445	92875	92890
5.6:1	15445	92876	92880	15439	
7.7:1	15445	92862	92880	15390	
8:1	15475	92875	92875	15439	
11.1:1	15374	92875	92876	15439	
15.5:1	15374	92876	92862	15439	
21.5:1	15374	92862	92862	15390	

SERVICE PARTS

CODE	PART	QUAN.	DESCRIPTION	CODE	PART	QUAN.	DESCRIPTION
1	*	As Req'd.	Cam	23	50521	6	Screw
2	15368	2	Spacer	24	50522	2	Set screw
3	15369	2	Tappet alignment screw	25	50792	As Req'd	Screw
4	**	1	Spur gear-plain	26	50833	16	Screw
5	**	1	Spur gear-cluster	27	50849	As Req'd	Screw
6	**	1	Spur gear-cluster	28	50860	4	Screw
7	**	1	Spur gear-plain	29	66186	17	Lockwasher
8	15438	As Req'd	Spacer	30	66220	4	Lockwasher
9	16357	1	Camshaft	31	67359	1	Pipe plug
10	16376	1	Spacer	32	68220	As Req'd	#3 Woodruff key
11	31162	4	Gasket	33	68645	4	Pipe plug
12	31163	2	Gasket	34	69973-1	2	#5 Woodruff key
13	31176	1	Washer	35	69985	2	View gauge
14	33131	2	Pump gasket	36	69987	4	Retaining ring
15	33132	1	Top cover gasket	37	69988	4	Retaining ring
16	33133	2	End plate gasket	38	92863	1	Gear case cover
17	34368	4	O-ring	39	***	As Req'd	Pump head assembly
18	40705	1	Drive end plate	40	360956	1	Shaft guard
19	40721	1	Gear case housing	41	361077	1	Mounting plate
20	45989	As Req'd	Pump station cover	42	880124	As Req'd	Roller tappet assembly
21	48564	4	Washer	43	880490	1	Stuffing box assembly
22	50006	1	Screw				

*15036 Single Lobe Cam or 16538 Double Lobe Cam as designated

**See Gear chart above

***7mm pump or 11mm pump as required. See Code Chart on front page

RETAIN THIS INFORMATION FOR FUTURE REFERENCE

When ordering replacement parts, list: Part Number, Description, Model Number, and Series Letter.

LINCOLN ST LOUIS provides a Distributor Network that stocks equipment and replacement parts.