

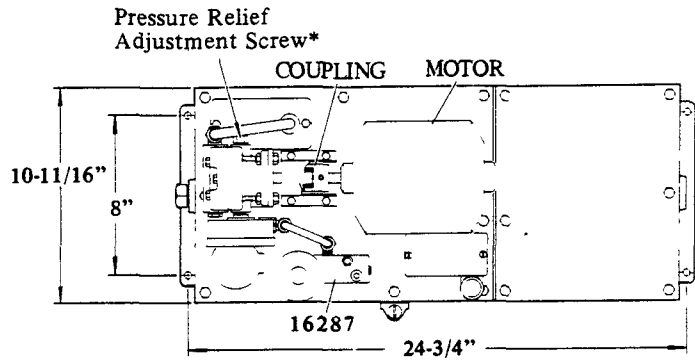
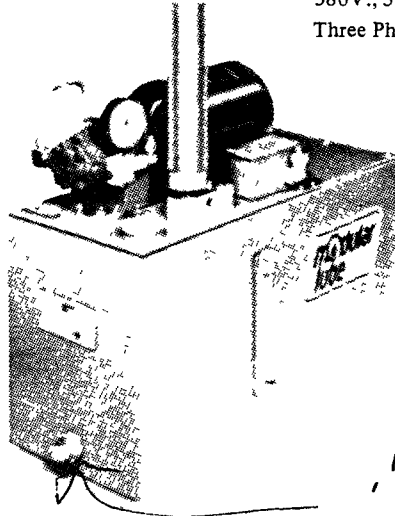


**Models 87290, 87291, 87292,
87293, 87294, 87295, 87296
CIRCULATING OIL UNIT**

TEN GAL. RESERVOIR ELECTRICALLY OPERATED

ELECTRICAL DATA

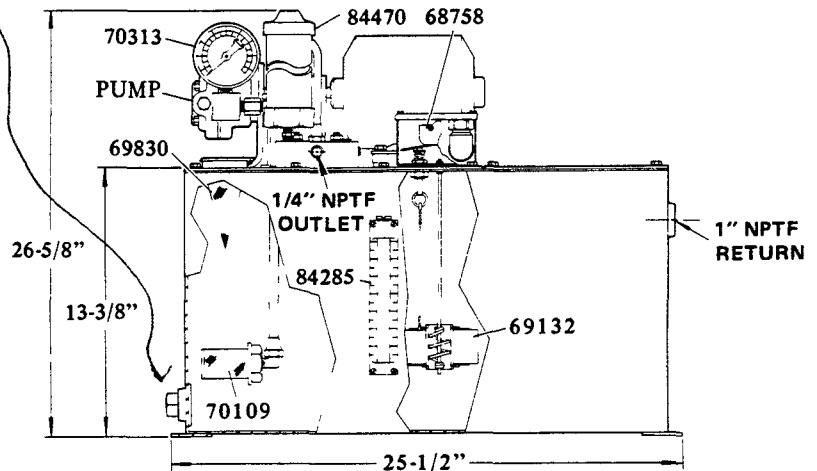
230/460V., 60 Hz.
380V., 50 Hz.
Three Phase



*Pre-set at 900 psi.

Each Circulating Oil Unit is a complete oil dispensing package including pump, electric motor, 1000 psi pressure gauge and an accumulator to prevent damage to gauges and equipment due to surges in line pressure. A low level switch is included to signal when oil level is low and the reservoir mounted sight gauge allows a visual check of oil level.

1" NPT
DRAIN PLUG



SERVICE PARTS

PART	QUAN.	DESCRIPTION
16287	1	Manifold
68758	1	Switch
69132	1	Float
69830	1	Oil strainer
70109	1	Suction filter
70313	1	Gauge
84285	1	Sight gauge
84470	1	Accumulator

MODEL LISTING and SPECIFICATIONS

*ALL
IN SC
copy
unit*

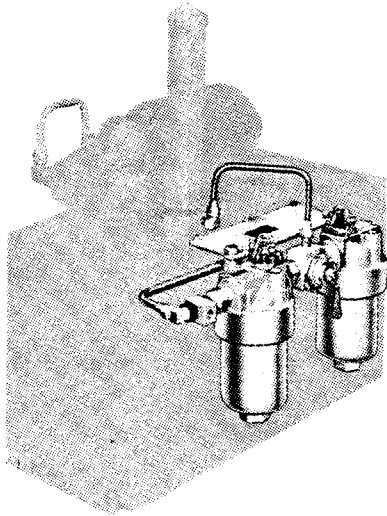
MODEL	PUMP	COUPLING	MOTOR	H.P.	MOTOR SPEED	OUTPUT/MIN. @ 800 psi
87290	70318	69227	323063	1/4	1140 R.P.M.	9 cu. in.
87291	70319	69227	323063	1/4	1140 R.P.M.	18 cu. in.
87292	70319	69227	68564	1/4	1725 R.P.M.	27 cu. in.
87293	70320	69227	323063	1/4	1140 R.P.M.	56 cu. in.
87294	70320	69227	68564	1/4	1725 R.P.M.	86 cu. in.
87295	70321	68657	323025	1/2	1140 R.P.M.	120 cu. in.
87296	70321	68657	323004	1/2	1725 R.P.M.	185 cu. in.



LINCOLN, One Lincoln Way
St. Louis, Missouri 63120-1578
(314) 679-4200 Customer Service, (314) 679-4300

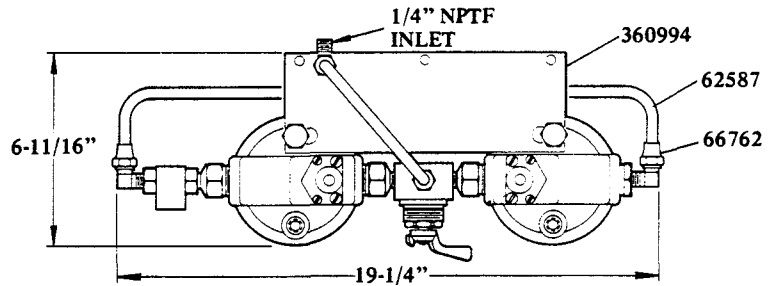
**SECTION - M22
PAGE - 3A**

ACCESSORIES



**MODEL 87866
DUAL FILTER ASSEMBLY**

1000 psi max.
10 micron filtration.

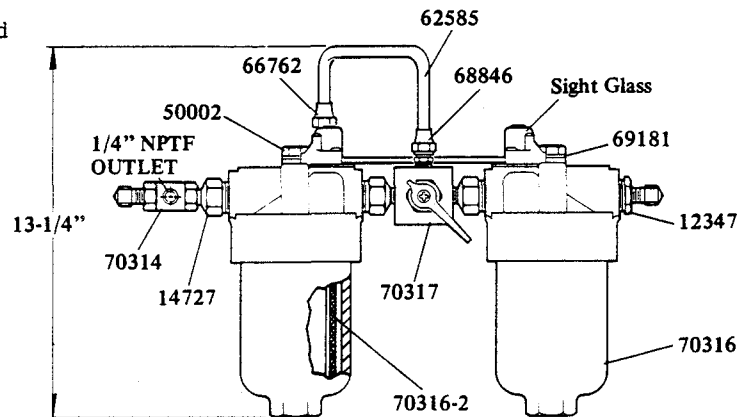


Model 87866 Dual Filter Assembly permits switchover from a contaminated filter element to a clean one while the lube system is operating. The clogged filter may then be removed and replaced.

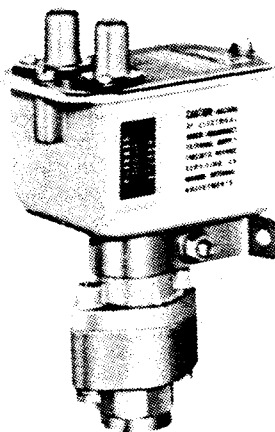
Filter condition is indicated by color gauge visible through sight glass. Three colored bands; green, yellow and red show the extent of filter contamination. When contamination of the filter causes the plunger to rise into the red band area, filter element changing is required.

SERVICE PARTS

PART	QUAN.	DESCRIPTION
12347	1	Bushing
14727	3	Reducer
50002	2	Screw
62585	1	Tube
62587	1	Tube
66762	3	90° Tube connector
66846	1	Tube connector
69181	2	Lockwasher
70314	1	Shuttle valve
70316	2	Filter
*70316-2	2	Filter element
70317	1	3-Way valve
360994	1	Filter support



*Included with 70316 Filter



**MODEL 70265
HIGH-LOW PRESSURE SWITCH**

Buna N O-ring Seal
Pressure Range, Increasing-
135 psi min.
1500 psi max.
Pressure Range, Decreasing-
125 psi min.
1440 psi max.

Electrical Data-
10 Amps at 125, 250 or 480V A.C.
15 Amps at 6V D.C.
5 Amps at 24V D.C.
.03 Amps at 250V D.C.