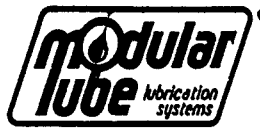


MANUAL HAND PUMP

TO BE USED WITH OIL ONLY
(21 OZ. CAPACITY)



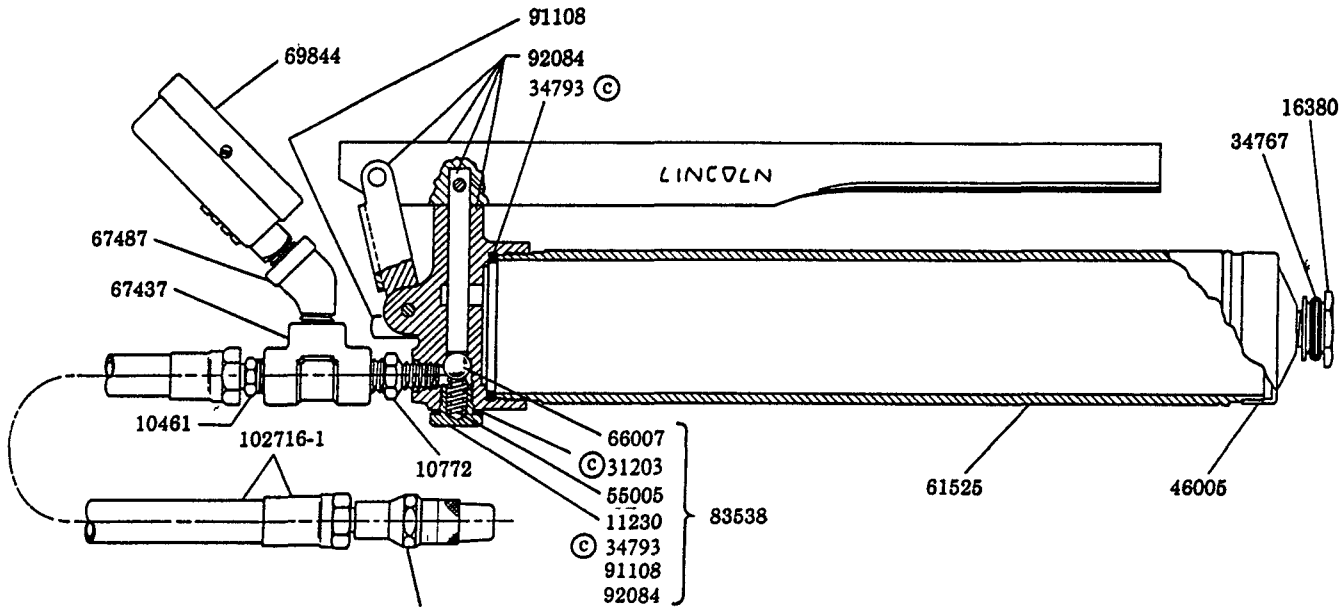
Model 130290

Series "A"

MODULAR LUBE
OF ST. LOUIS, MO.

M-111

PARTS



5845 Hydraulic Coupler
Refer to Service Manual
Section F4, Page 2 Series.

Ⓒ Indicates change

SERVICE INSTRUCTIONS

-) To fill hand pump, remove 61525 Container Tube from 83538 Head Assembly. Fill container tube with oil and reassemble.
-) When lubricating gas meters, hold pump in a vertical position so that gas entering pump can escape through vent valve in end of container.
-) If manual hand pump fails to develop pressure:
 - A) A vacuum may have been created in containertube. Hold pump vertical with 83538 Head Assembly up. Loosen 61525 Con-

tainer Tube from head assembly to relieve vacuum. Tighten container tube.

- B) Debris may be holding the ball check open. Remove 11230 Spring Housing, 55005 Spring and 66007 Ball. Clean all parts thoroughly, including the check seat in the head assembly.

IMPORTANT: Do not remove 46005 End Cap. Removal will break Loctite seal on threads. ¹

SERVICE PARTS

PART	QUAN.	DESCRIPTION	PART	QUAN.	DESCRIPTION
5845	1	Hydraulic coupler	61525	1	Container tube
10461	1	Adapter	66007	1	Steel ball
10772	1	Nipple	67437	1	Pipe tee
11230	1	Spring housing	67487	1	Street elbow
16380	1	Relief valve body	69844	1	Pressure gauge
31203	1	Gasket	83538	1	Head assembly
34793	1	Gasket	91108	1	Filler fitting
34767	1	O-ring	92084	1	Handle & plunger
46005	1	End cap	102716-1	1	Hose
55005	1	Spring			

LINCOLN ST. LOUIS
4010 GOODFELLOW BLVD. • ST. LOUIS, MO. 63120 • (314) 679-4200



A DIVISION OF
McNEIL
CORPORATION

SECTION - M23
PAGE - 17A