

AIR OPERATED PRE-LUBE PUMP

FOR COMPRESSOR ENGINES



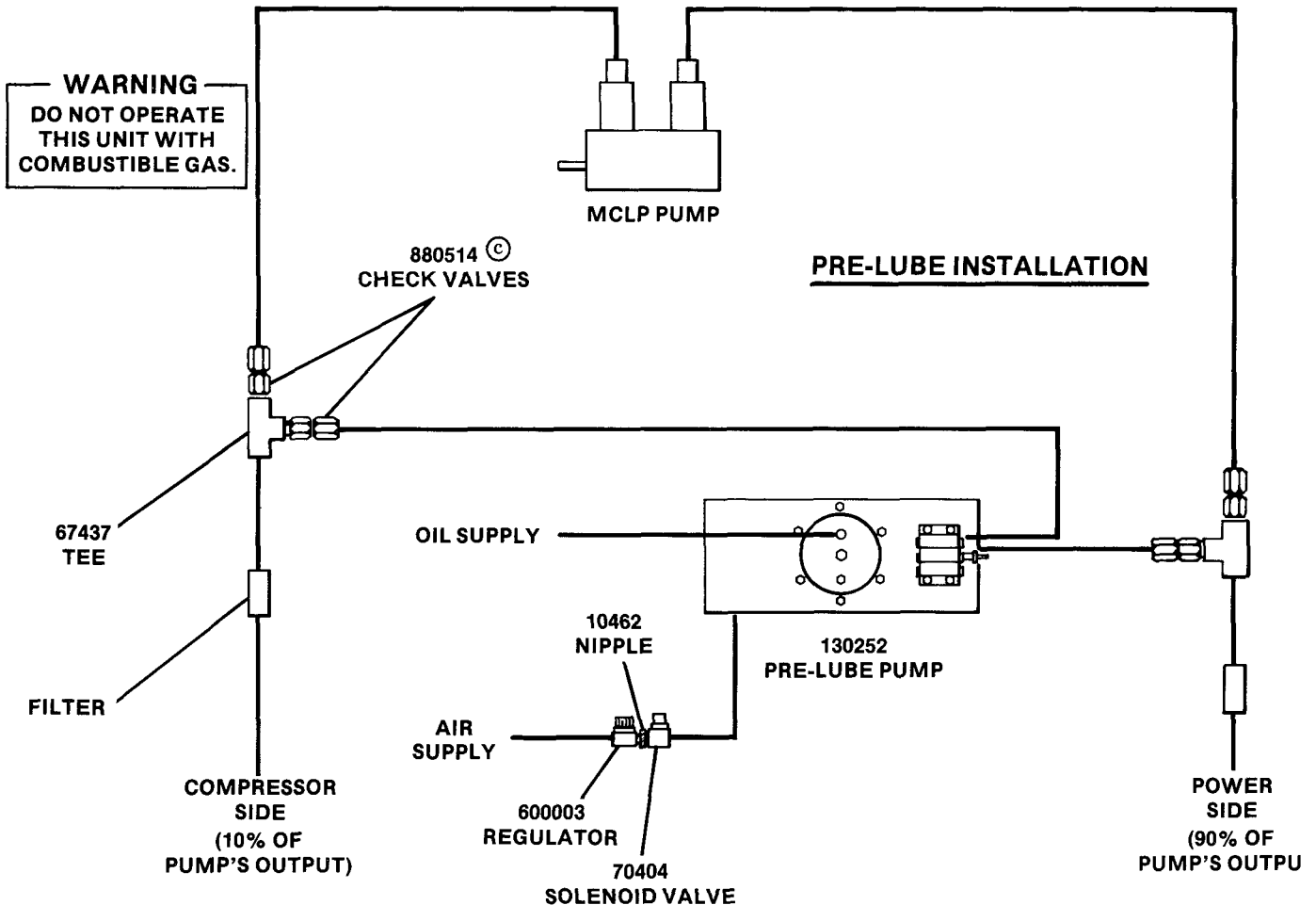
Model 130252

Series "C"

SPECIFICATIONS:

40:1 RATIO - LUBRICANT PRESSURE TO AIR PRESSURE.
 MAXIMUM AIR PRESSURE - 100 PSI.
 MAXIMUM LUBRICANT INLET PRESSURE - 50 PSI.
 1450 PSI PIN-TYPE INDICATORS AT DIVIDER VALVE OUTLETS.
 2050 PSI RUPTURE INDICATOR WITH RETURN TO RESERVOIR.

1:9 RATIO PROPORTION OUTPUT
 AIR INLET - 1/8" NPTF.
 LUBE INLET - 1/4" NPTF.
 LUBE OUTLETS - 1/8" NPTF.



DESCRIPTION

© Indicates change

Model 130252 Air Operated Pre-Lube Pump is used on compressor engines when a pneumatic pre-lube is desired. This pump is normally used together with a Modular Lube MCLP Pump and Divider Valve System to successfully pre-lube the engine's cylinders and rod packings until normal lubrication is continued by the MCLP Pump (see schematic above).

Lubricant output is adjustable by regulating the quantity of air to the air cylinder. 70404 3-Way Air Solenoid Valve (explosion-proof with vent to atmosphere), 600003 Regulator and 10462 Nipple (to connect solenoid to regulator) are included to control air supply to the pump.

NOTE: The regulator should be mounted in the constant air supply line to the solenoid as shown above.

An MM Divider Valve Set is located on top side of the pump to divide the lubricant output into a 1:9 ratio, a common ratio between compressor and power cylinder requirements. Other ratios are available by changing the MM Divider Valves.

The illustration above shows a typical installation of the pre-lube pump in an MCLP Pump and Divider Valve System. Four 880514 Check Valves (1/4" NPTF) and two 67437 Tees (1/4" NPTF Female) are also included for the installation as shown.

LINCOLN ST. LOUIS

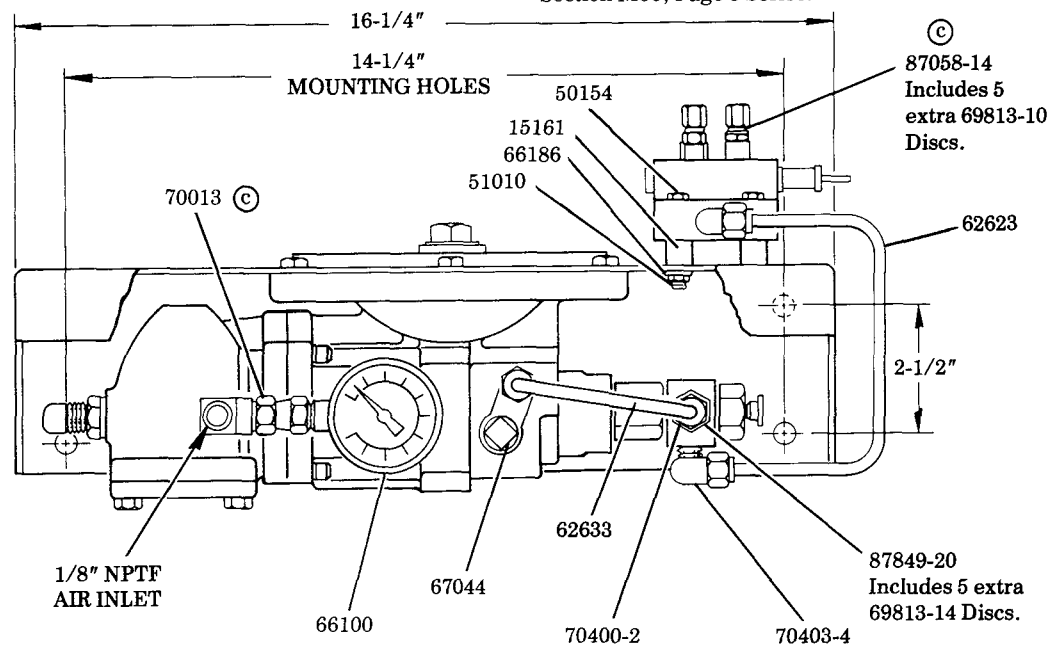
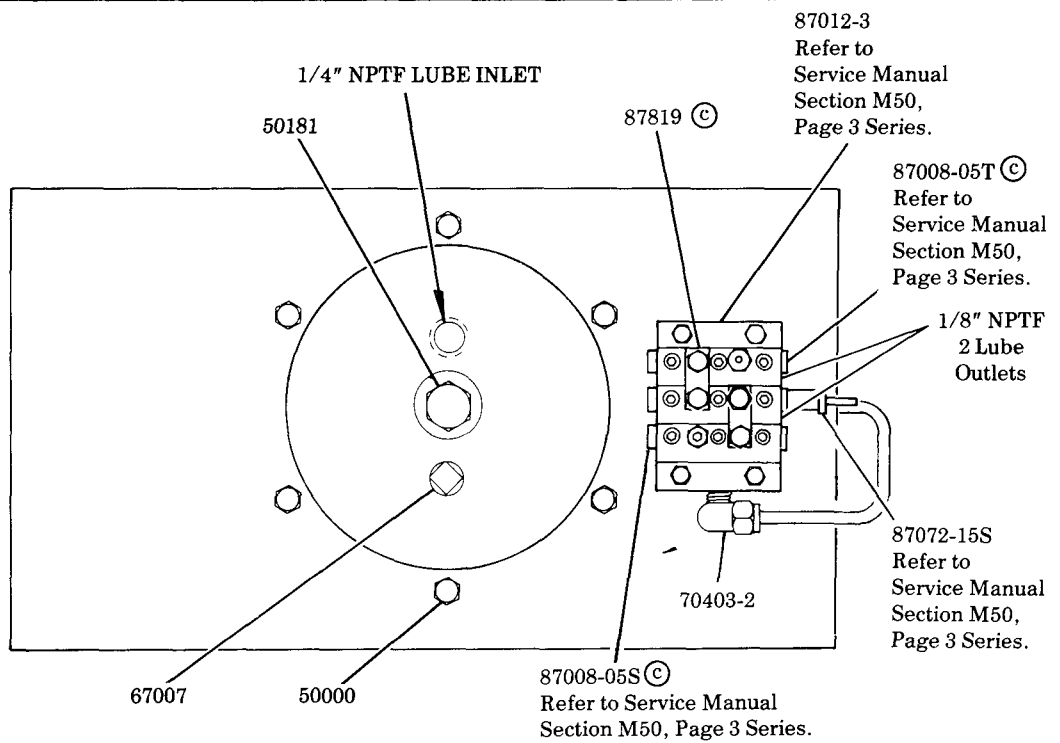
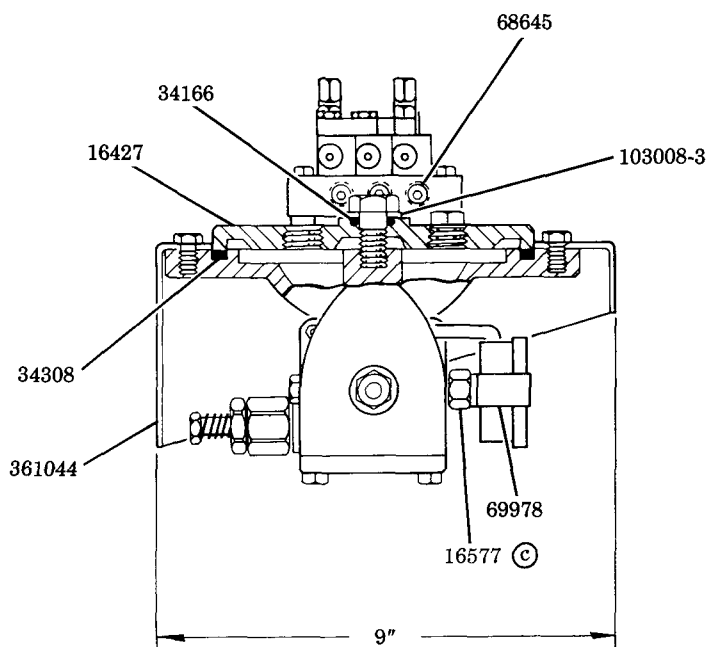
4010 GOODFELLOW BLVD • ST LOUIS, MO 63120 • (314) 679-4200



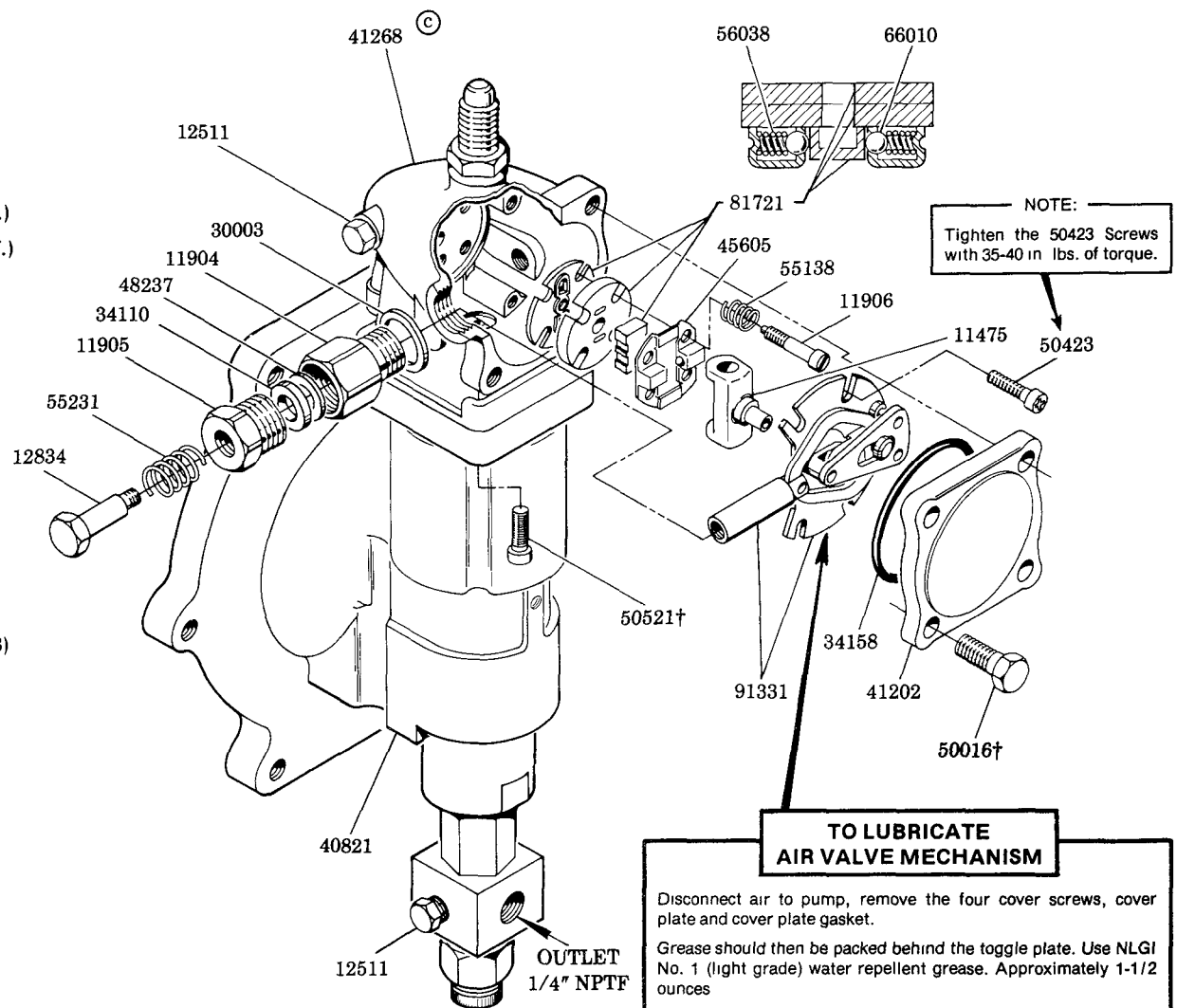
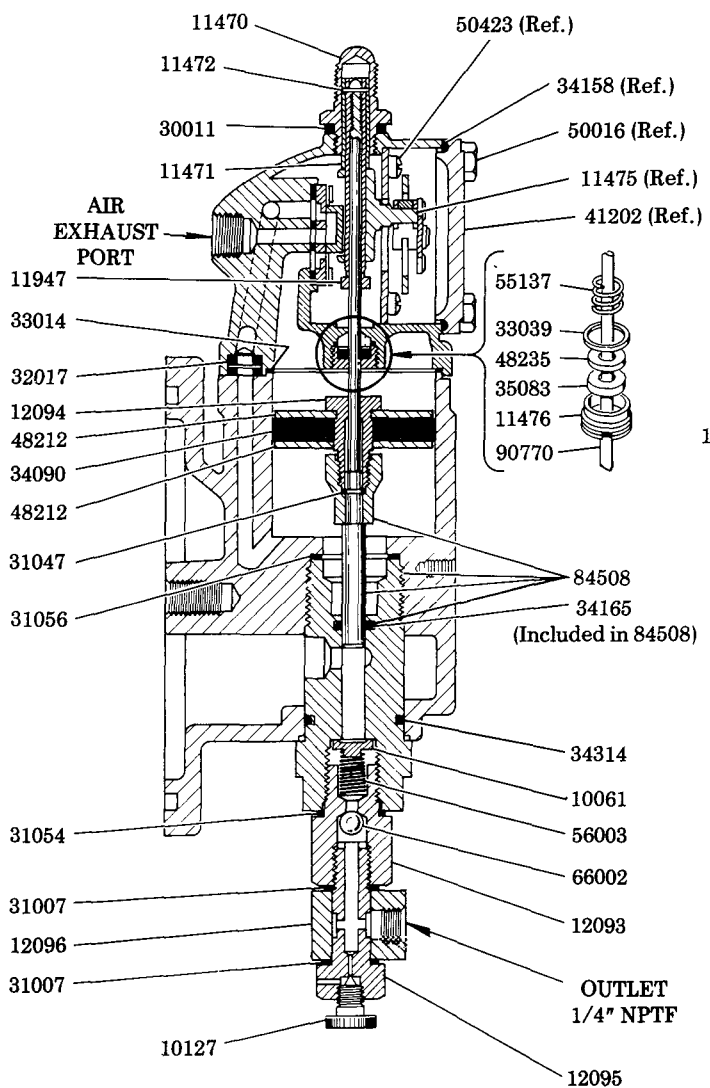
A DIVISION OF
McNEIL
 CORPORATION

SECTION -M23
 PAGE -19B

**MODEL 130252
AIR OPERATED
PRE-LUBE PUMP**



(C) Indicates change



NOTE:
Tighten the 50423 Screws
with 35-40 in. lbs. of torque.

**TO LUBRICATE
AIR VALVE MECHANISM**

Disconnect air to pump, remove the four cover screws, cover plate and cover plate gasket.
Grease should then be packed behind the toggle plate. Use NLGI No. 1 (light grade) water repellent grease. Approximately 1-1/2 ounces
If toggle plate has been removed from air valve casting, pack cavity with grease before replacing toggle plate.
Replace cover plate gasket, cover plate and cover screws. Tighten to avoid air leaks
Periodic inspection of parts at least once each year is advisable.

† Assemble with
Loctite #74 Blue

SERVICE PARTS

PART	QUAN.	DESCRIPTION	PART	QUAN.	DESCRIPTION
10061	1	Pump check disc	48237	1	Washer
10127	1	Plug	50000	6	Screw
10462	1	Nipple	50016	4	Screw
11470	1	Cap	50154	4	Screw
11471	1	Trip rod collar	50181	1	Screw
11472	1	Trip rod pin	50423	4	Screw
11475	1	Trip shoe	50521	4	Screw
11476	1	Trip rod packing nut	51010	4	Nut
11904	1	Packing nut	55137	1	Spring
11905	1	Packing cap	55138	4	Spring
11906	4	Valve seat bolt	55231	1	Spring
11947	1	Trip sleeve	56003	1	Spring
12093	1	Check housing	56038	2	Spring
12094	1	Air piston bolt	62623	1	Tubing
12095	1	Outlet body	62633	1	Tubing
12096	1	Outlet block	66002	1	Steel ball
12511	2	Pipe plug	66010	2	Steel ball
12834	1	Spring retainer	66100	1	Gauge
15161	4	Spacer	66186	4	Lockwasher
16427	1	Cover plate	67007	1	Plug
16577	1	Restrictor	67044	1	Plug
30003	1	Gasket	67437	2	Tee
30011	1	Gasket	68645	4	Plug
31007	2	Gasket	69978	1	Tee
31047	1	Gasket	70013	1	Adapter union
31054	1	Gasket	70400-2	2	Connector
31056	1	Gasket	70403-2	1	Connector
32017	2	Gasket	70403-4	1	Connector
33014	1	Gasket	70404	1	Solenoid valve
33039	1	Gasket	81721	1	Valve slide seat & gasket assembly
34090	1	Packing	84508	1	Bushing, plunger & o-ring assembly
34110	1	Packing	87008-05S	1	Divider valve assembly
34158	1	Gasket	87008-05T	1	Divider valve assembly
34165	1	O-ring	87012-3	1	Base plate
34166	1	O-ring	87058-14	2	Indicator assembly
34308	1	Gasket	87072-15S	1	Divider valve assembly
34314	1	O-ring	87819	2	Crossport bar assembly
35083	1	Packing	87849-20	1	Indicator assembly
40821	1	Base casting	90770	1	Trip rod
41202	1	Cover casting	91331	1	Toggle plate
41268	1	Air valve casting	103008-3	1	Washer
45505	1	Valve guide plate	361044	1	Bracket
48212	2	Washer	600003	1	Regulator
48235	1	Washer	880514	4	Check valve

RETAIN THIS INFORMATION FOR FUTURE REFERENCE

When ordering replacement parts, list: Part Number, Description, Model Number, and Series Letter.
 LINCOLN ST. LOUIS provides a Distributor Network that stocks equipment and replacement parts.