

MODULAR LUBE®

Model No. 87240 AIR OPERATED GREASE PUMP Series "B"

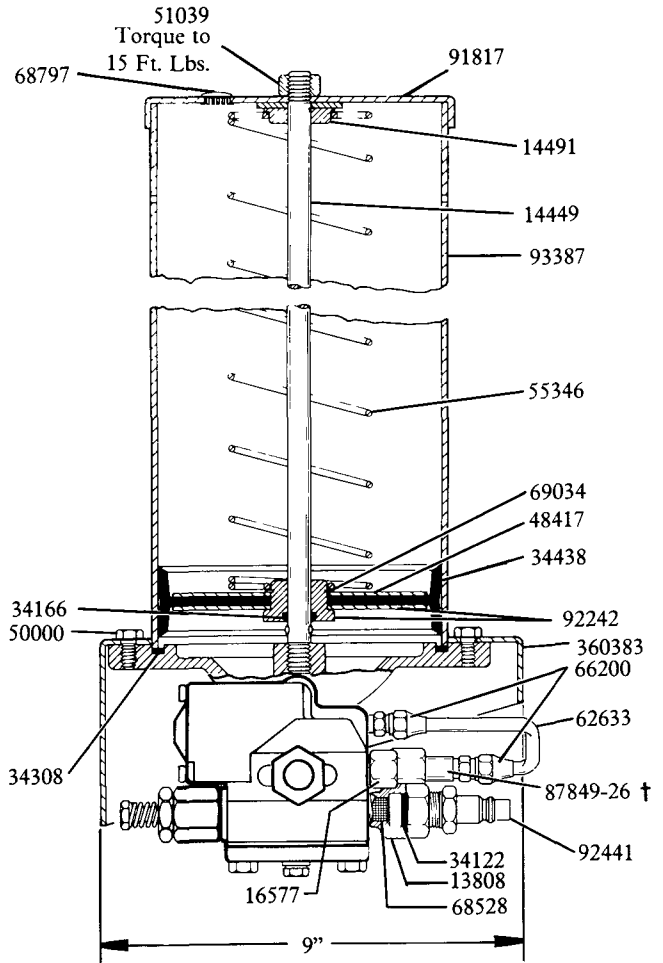
SPECIFICATIONS

RATIO:.....40:1
AIR INLET:.....1/8" NPTF(F)
LUBE OUTLET:.....1/4" NPTF
RESERVOIR CAPACITY:.....12 LBS.
MAX. LUBE OUTPUT/MIN. @ 100 PSI:12 cu. in.

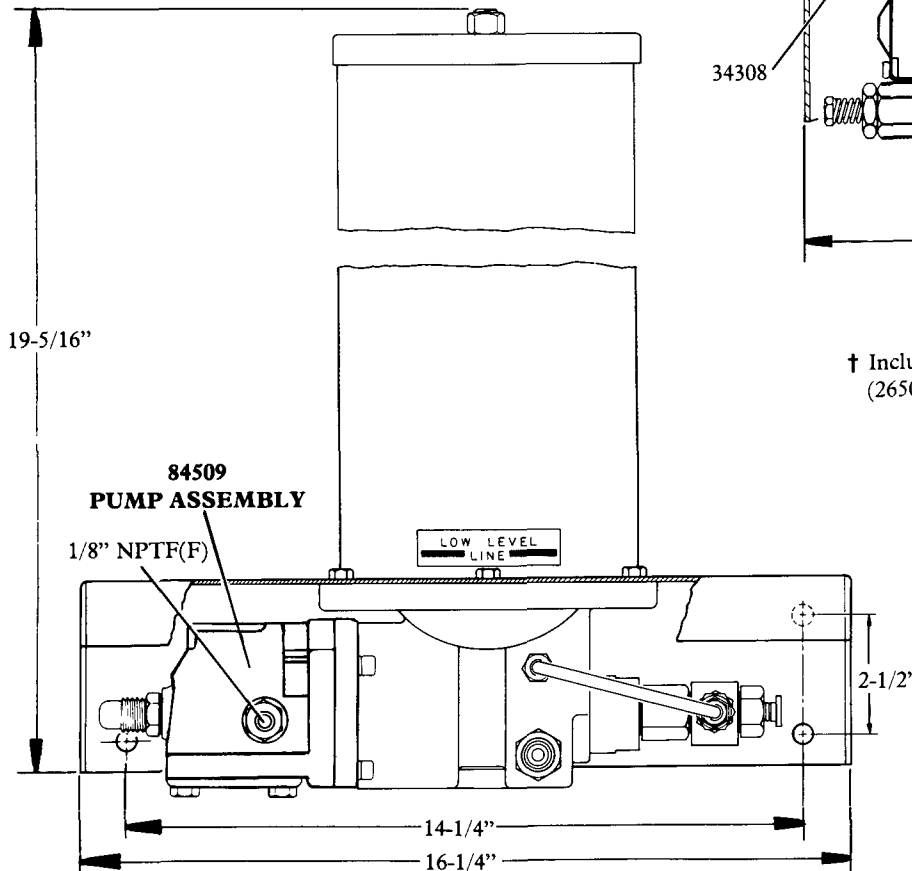
TO FILL RESERVOIR

Use 81834 Manual Filler Pump to fill reservoir through the 92441 Filler Fitting in the pump body. Attach coupler on delivery hose to filler fitting. Stroke filler pump handle until weepage is noted at air vent hole in the reservoir (lower portion of follower must rise beyond air vent hole to expel entrapped air from lubricant).

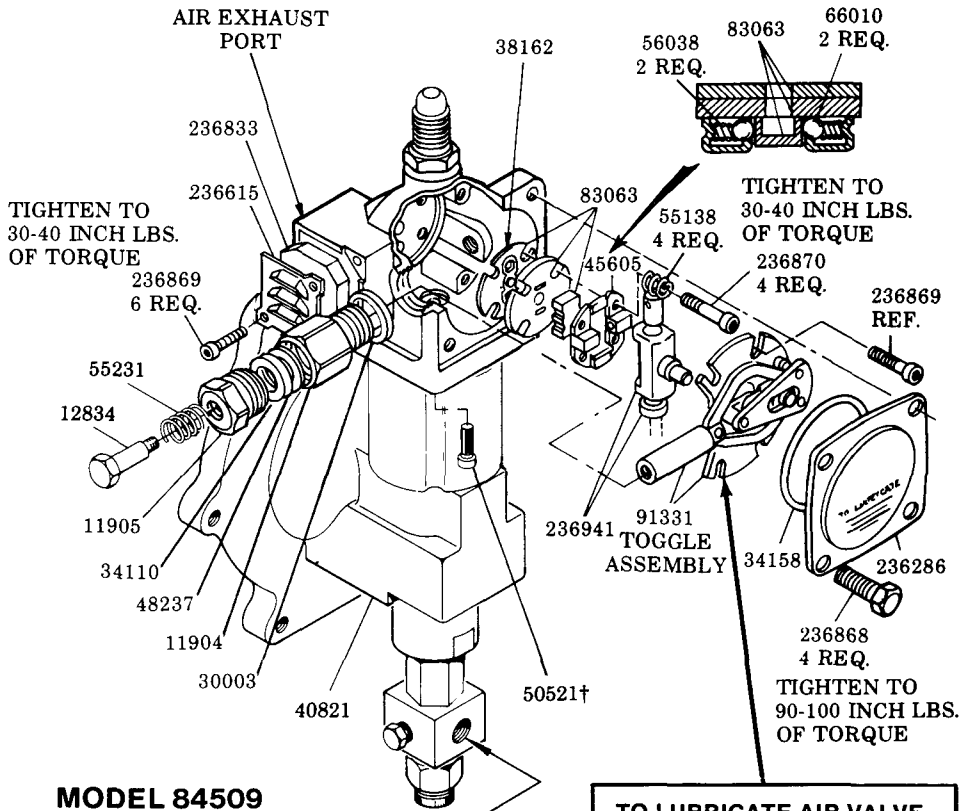
NOTE: When filling the reservoir, caution should be used as extreme pressure can cause damage to reservoir and follower assembly.



† Includes 69813-18-0 Rupture Disc
(2650 psi relief pressure, 5 extra discs included)



WARNING
DO NOT OPERATE
THIS UNIT WITH
COMBUSTABLE GAS



MODEL 84509

† Assemble with
Loctite #242 Blue

OUTLET
1/4" NPTF

TO LUBRICATE AIR VALVE MECHANISM

Disconnect air to pump, remove the four cover screws, cover plate and cover plate gasket.

Remove and disassemble the air valve casting from the pump

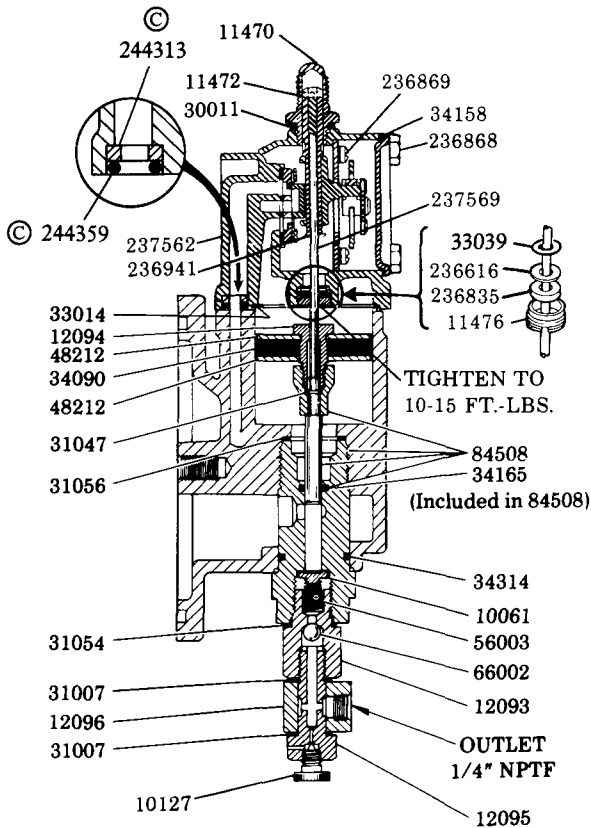
The air valve casting should be cleaned or flushed to remove any chips, or other foreign particles prior to re-assembly.

Before replacing the toggle assembly, pack cavity with grease

Use NLGI No 1 (light grade) water repellent grease. Approximately 1½ ounces.

Replace cover gasket, cover, and screws. Tighten to avoid air leaks.

Periodic inspection of parts at least once each year is advisable



IMPORTANT - Start fasteners by hand to avoid stripping threads when re-assembling.

© Indicates Change

SERVICE PARTS

Part	Qty.	Description	Part	Qty.	Description
10061	1	Check disc	51039	1	Nut
10127	1	Vent plug	55138	4	Valve seat spring
11470	1	Valve cap	55231	1	Spring
11472	1	Trip rod pin	55346	1	Spring
11476	1	Trip rod packing nut	56003	1	Pump check spring
11904	1	Packing nut	56038	2	Equalizer spring
11905	1	Packing cap	62633	1	Steel tubing
12093	1	Check housing	66002	1	Ball
12094	1	Air piston bolt	66010	2	Ball
12095	1	Outlet body	66200	2	Tube connector
12096	1	Outlet block	68528	1	Strainer
12511	1	Pipe plug	68797	1	Plug Button
12834	1	Spring retainer	69034	1	Retaining ring
13808	1	Adapter	69813-18-0	6	Disc (pink)
14449	1	Tie rod	83063	1	Valve slide, seat, & gasket
14491	1	Retainer washer	84508	1	Plunger, bushing & o-ring
16577	1	Connector	84509	1	Pump assembly
30003	1	Packing nut gasket	87849-26	1	Rupture assembly
30011	1	Valve cap gasket	91331	1	Toggle plate
31007	2	Gasket	91817	1	Reservoir cap
31047	1	Gasket	92242	1	Bushing & washer
31054	1	Gasket	92441	1	Filler fitting
31056	1	Gasket	93387	1	Reservoir
33014	1	Air cylinder gasket	93438	1	Bushing and plunger ass'y.
33039	1	Gasket	236286	1	Cover
34090	1	Air piston packing (Buna-N)	236615	1	Muffler cover
34110	1	Plunger packing (Buna-N)	236616	1	Gasket
34122	1	Check disc packing (Buna-N)	236833	1	Muffler
34158	1	Cover gasket (Neoprene)	236835	1	Packing
34165	1	O-ring (Buna-N)	236868	4	Screw
34166	1	O-ring (Buna-N)	236869	6	Screw
34308	1	Gasket (Buna-N)	236870	4	Valve seat bolt
34314	1	O-ring (Buna-N)	236941	1	Trip shoe assembly
34438	1	Follower packing (Buna-N)	237562	1	Air valve casting
38162	1	Valve seat gasket (Buna-N)	237569	1	Trip rod assembly
40821	1	Base casting	239330	1	Viton packing assembly
45605	1	Valve guide plate	239336	1	Valve body
48212	2	Air piston washer	244313	1	Seat
48237	1	Plunger packing washer	244359	1	O-ring (Buna-N)
48417	1	Follower washer	360383	1	Base
50000	6	Screw	630102	1	Plug
50521	4	Screw			