

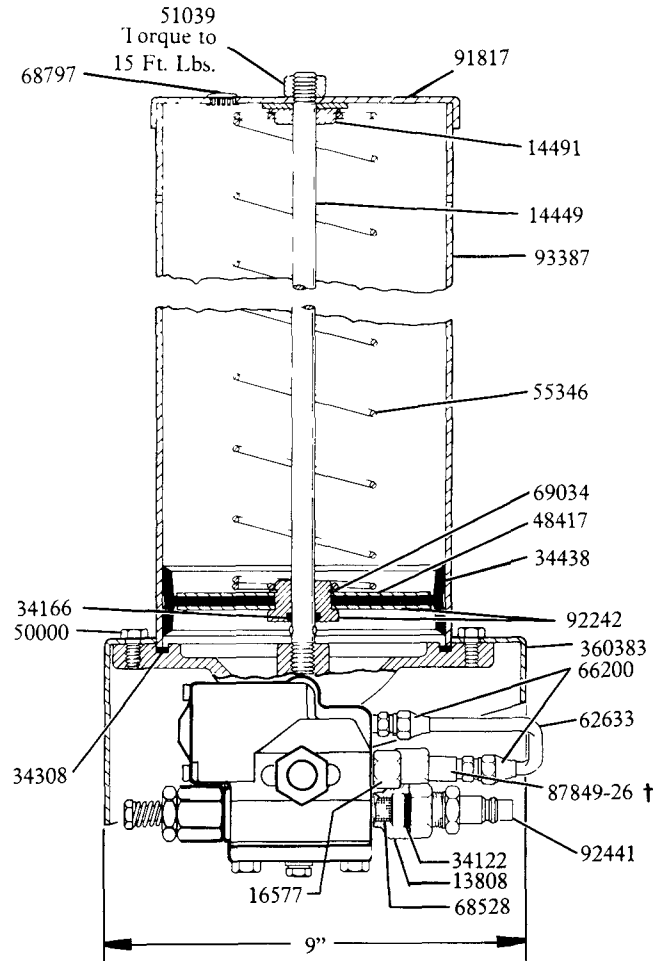
SPECIFICATIONS

RATIO:.....40:1
AIR INLET:.....1/8" NPTF(F)
LUBE OUTLET:.....1/4" NPTF
RESERVOIR CAPACITY:.....12 LBS.
MAX. LUBE OUTPUT/MIN. @ 100 PSI:12 cu. in.

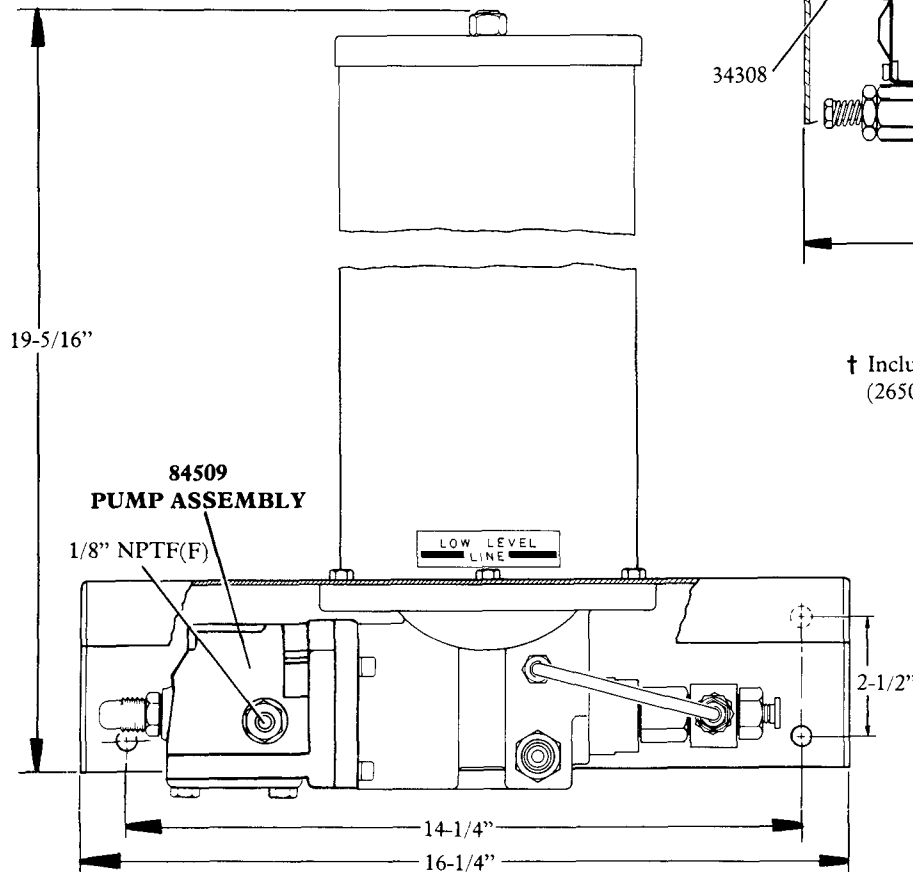
TO FILL RESERVOIR

Use 81834 Manual Filler Pump to fill reservoir through the 92441 Filler Fitting in the pump body. Attach coupler on delivery hose to filler fitting. Stroke filler pump handle until weepage is noted at air vent hole in the reservoir (lower portion of follower must rise beyond air vent hole to expel entrapped air from lubricant).

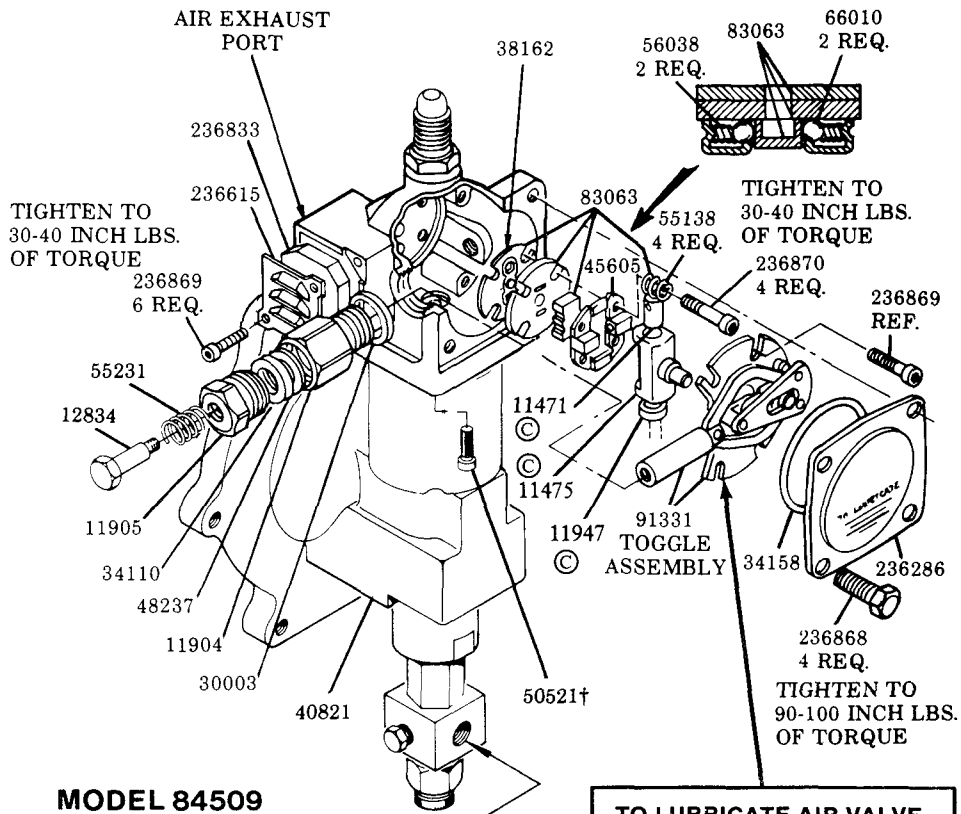
NOTE: When filling the reservoir, caution should be used as extreme pressure can cause damage to reservoir and follower assembly.



† Includes 69813-18-0 Rupture Disc
(2650 psi relief pressure, 5 extra discs included)



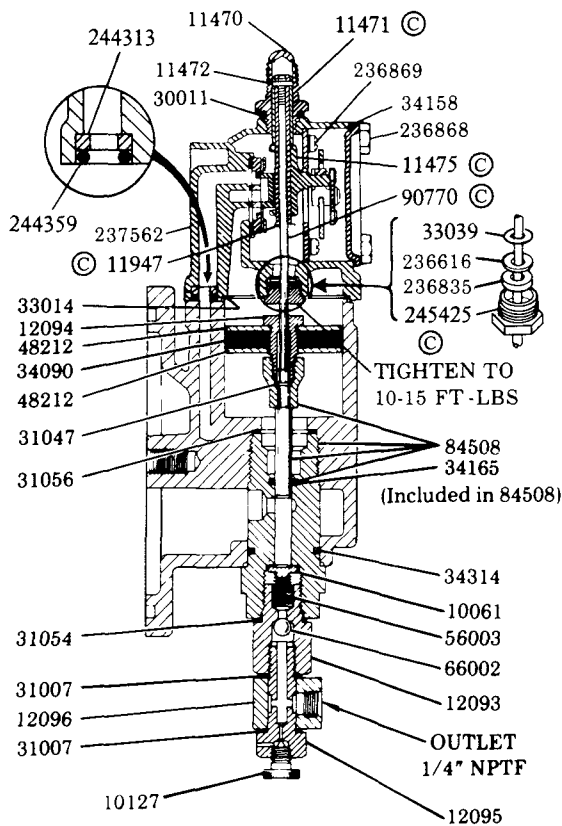
WARNING
DO NOT OPERATE
THIS UNIT WITH
COMBUSTABLE GAS



MODEL 84509

† Assemble with
Loctite #242 Blue

OUTLET
1/4" NPTF



TO LUBRICATE AIR VALVE MECHANISM

Disconnect air to pump, remove the four cover screws, cover plate and cover plate gasket

Remove and disassemble the air valve casting from the pump

The air valve casting should be cleaned or flushed to remove any chips, or other foreign particles prior to re-assembly

Before replacing the toggle assembly, pack cavity with grease

Use NLGI No 1 (light grade) water repellent grease Approximately 1½ ounces.

Replace cover gasket, cover, and screws Tighten to avoid air leaks

Periodic inspection of parts at least once each year is advisable

IMPORTANT - Start fasteners by hand to avoid stripping threads when re-assembling.

© Indicates Change

SERVICE PARTS

Part	Qty.	Description	Part	Qty.	Description
*10061	1	Check disc	50521	4	Screw
10127	1	Vent plug	51039	1	Nut
11470	1	Valve cap	55138	4	Valve seat spring
*11471	1	Trip rod collar	55231	1	Spring
*11472	1	Trip rod pin	55346	1	Spring
*11475	1	Trip shoe	56003	1	Pump check spring
11904	1	Packing nut	56038	2	Equalizer spring
11905	1	Packing cap	62633	1	Steel tubing
*11947	1	Trip sleeve	66002	1	Ball
12093	1	Check housing	*66010	2	Ball
12094	1	Air piston bolt	66200	2	Tube connector
12095	1	Outlet body	68528	1	Strainer
12096	1	Outlet block	68797	1	Plug Button
12511	1	Pipe plug	69034	1	Retaining ring
12834	1	Spring retainer	69813-18-0	6	Disc (pink)
13808	1	Adapter	*83063	1	Valve slide, seat, & gasket
14449	1	Tie rod	84508	1	Plunger, bushing & o-ring
14491	1	Retainer washer	84509	1	Pump assembly
16577	1	Connector	87849-26	1	Rupture assembly
30003	1	Packing nut gasket	*90770	1	Trip rod
30011	1	Valve cap gasket	*91331	1	Toggle plate
*31007	2	Gasket	91817	1	Reservoir cap
31047	1	Gasket	92242	1	Bushing & washer
31054	1	Gasket	92441	1	Filler fitting
31056	1	Gasket	93387	1	Reservoir
33014	1	Air cylinder gasket	93438	1	Bushing and plunger ass'y.
33039	1	Gasket	236286	1	Cover
34090	1	Air piston packing (Buna-N)	236615	1	Muffler cover
*34110	1	Plunger packing (Buna-N)	*236616	1	Gasket
*34122	1	Check disc packing (Buna-N)	236833	1	Muffler
*34158	1	Cover gasket (Neoprene)	*236835	1	Packing
34165	1	O-ring (Buna-N)	236868	4	Screw
34166	1	O-ring (Buna-N)	236869	6	Screw
34308	1	Gasket (Buna-N)	236870	4	Valve seat bolt
34314	1	O-ring (Buna-N)	237562	1	Air valve casting
34438	1	Follower packing (Buna-N)	239330	1	Viton packing assembly
*38162	1	Valve seat gasket (Buna-N)	239336	1	Valve body
40821	1	Base casting	*244313	1	Seat
*45605	1	Valve guide plate	*244359	1	O-ring (Buna-N)
48212	2	Air piston washer	*245425	1	Trip rod packing nut
48237	1	Plunger packing washer	360383	1	Base
48417	1	Follower washer	630102	1	Plug
50000	6	Screw			

* Recommended Service Parts Inventory

TROUBLESHOOTING

Problem	Solution
Pump operates continuously.	Pump has lost prime - Check lubricant supply. Refill reservoir if necessary. Air pocket trapped in lubricant. Loosen vent plug one turn. Allow pump to operate until trapped air is pumped out. Close vent plug.
Pump continues to operate without discharging lubricant.	Outlet checks 10061 and 66002 may be fouled - Remove and clean checks and check seats.
Pump fails to operate.	Check air supply.

————— RETAIN THIS INFORMATION FOR FUTURE REFERENCE —————

When ordering replacement parts, list: Part Number, Description, Model Number, and Series Letter.

LINCOLN provides a Distributor Network that stocks equipment and replacement parts.