

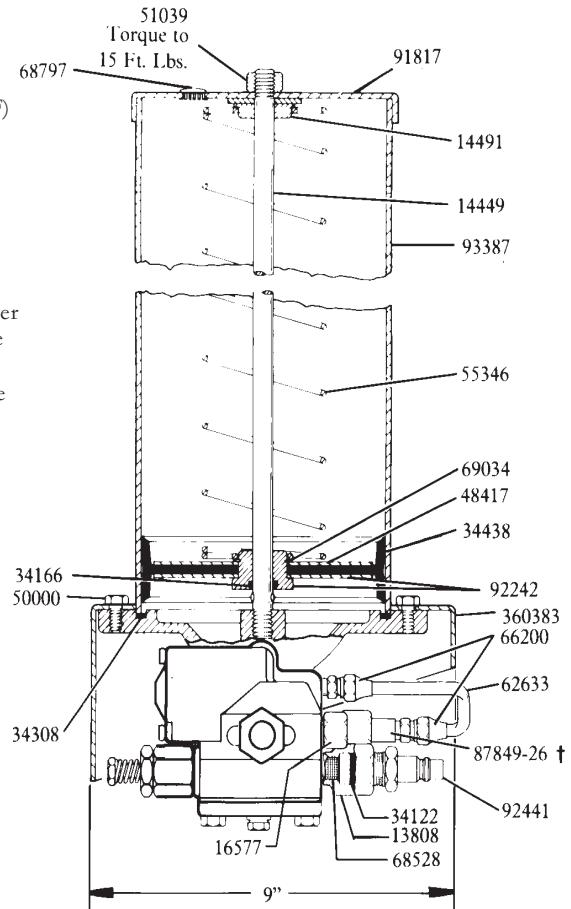
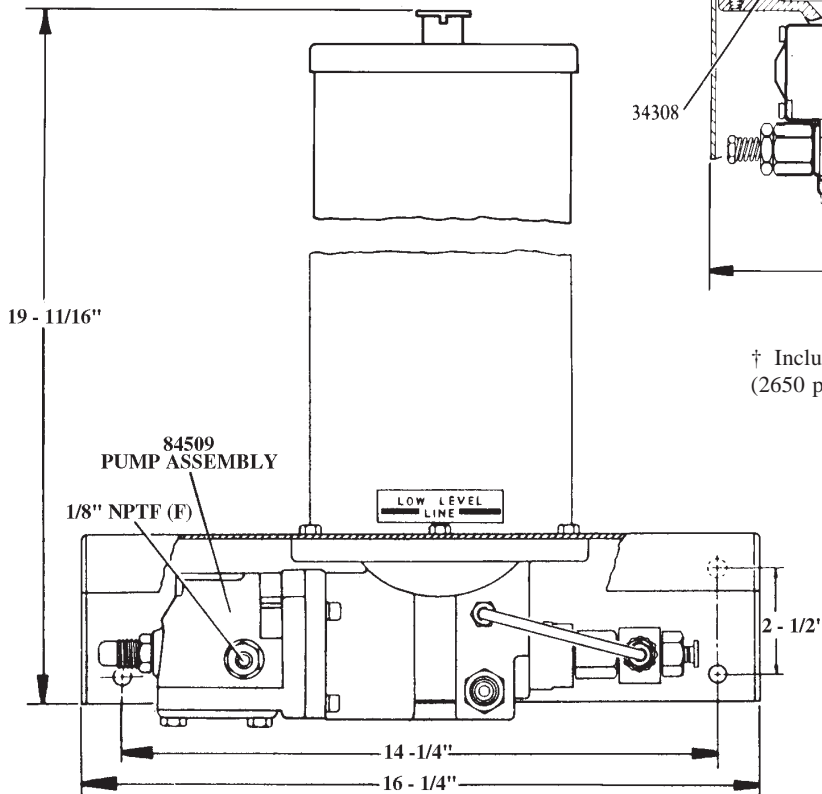
**SPECIFICATIONS**

RATIO: ..... 40:1  
 AIR INLET: ..... 1/8" NPTF (F)  
 LUBE OUTLET: ..... 1/4" NPTF  
 RESERVOIR CAPACITY: ..... 12 LBS.  
 MAX. LUBE OUTPUT/MIN. @ 100 PSI: ..... 12 cu. in.

**TO FILL RESERVOIR**

Use 81834 Manual Filler Pump to fill reservoir through the 92441 Filler Fitting in the pump body. Attach coupler on delivery hose to filler fitting. Stroke filler pump handle until weepage is noted at air vent hole in the reservoir (lower portion of follower must rise beyond air vent hole to expel entrapped air from lubricant).

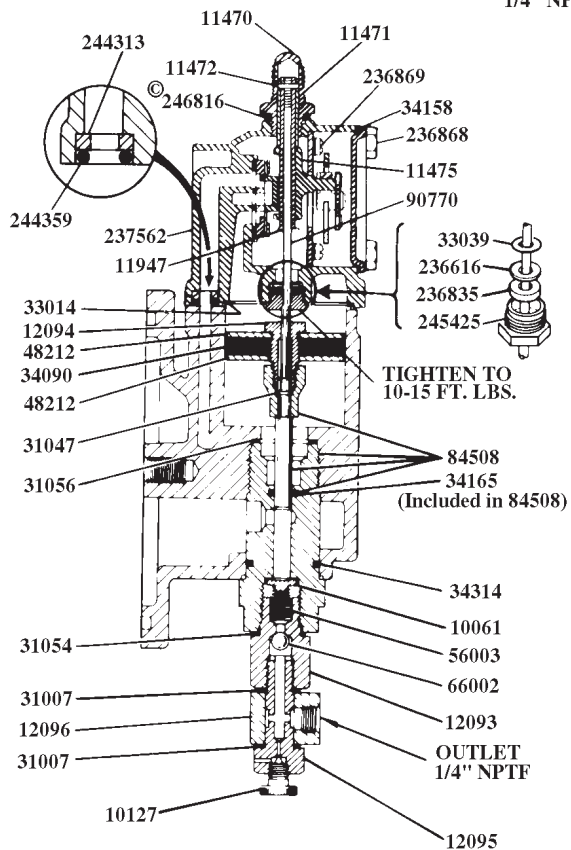
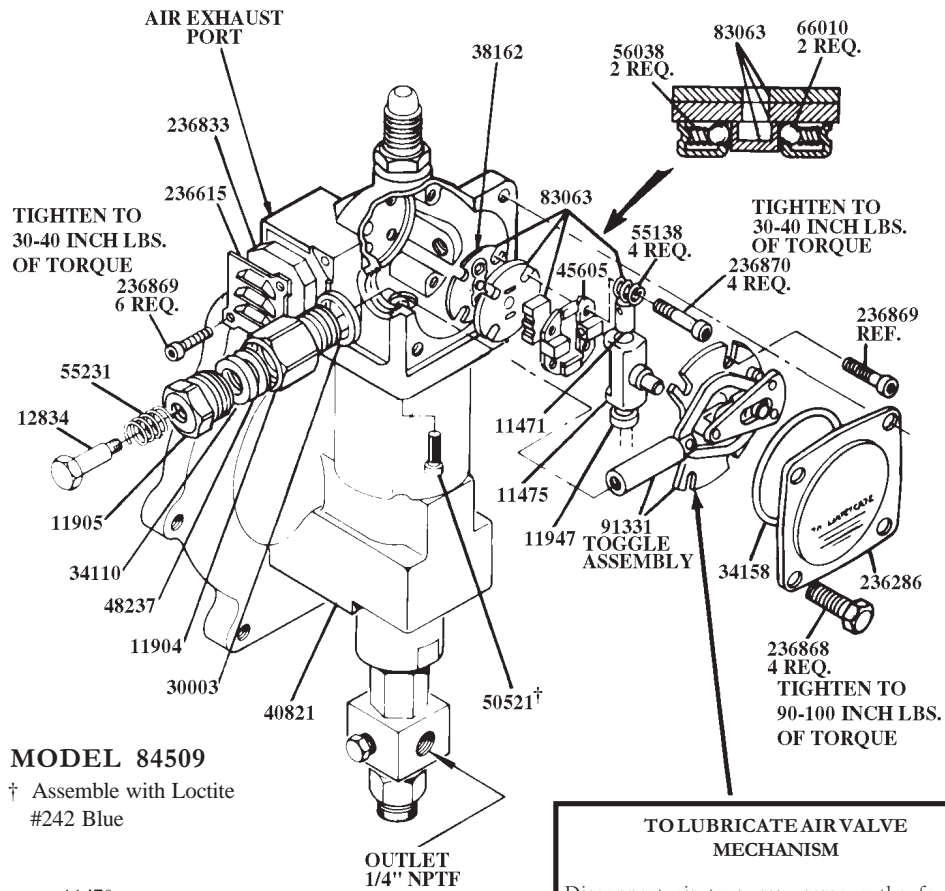
**NOTE:** When filling the the reservoir, caution should be used as extreme pressure can cause damage to reservoir and follower assembly.



† Includes 247456 Pink Rupture disc (2650 psi relief pressure, 5 extra discs included)

© Indicates change

**WARNING**  
DO NOT OPERATE  
THIS UNIT WITH  
COMBUSTABLE GAS



## SERVICE PARTS

Part	Qty.	Description	Part	Qty.	Description
*10061	1	Check disc	51039	1	Nut
10127	1	Vent plug	55138	4	Valve seat spring
11470	1	Valve cap	55231	1	Spring
11471	1	Trip rod collar	56003	1	Pump check spring
*11472	1	Trip rod pin	56038	2	Equalizer spring
*11475	1	Trip shoe	62633	1	Steel tubing
11904	1	Packing nut	66002	1	Ball
11905	1	Packing cap	*66010	2	Ball
11947	1	Trip sleeve	66200	2	Tube connector
12093	1	Check housing	67044	1	Pipe plug
12094	1	Air piston bolt	68797	1	Plug Button
12095	1	Outlet body	68849	1	Strainer
12096	1	Outlet block	68850	1	Filler cap
12511	1	Pipe plug	*83063	1	Valve slide, seat, & gasket
12834	1	Spring retainer	84508	1	Plunger, bushing & O-ring
14449	1	Tie rod	84509	1	Pump assembly
16577	1	Connector	87849-14	1	Rupture assembly
30011	1	Valve cap gasket	*90770	1	Trip rod
*31007	2	Gasket	*91331	1	Toggle plate
31047	1	Gasket	91979	1	Reservoir cap
31054	1	Gasket	93438	1	Bushing and plunger assembly
31056	1	Gasket	236286	1	Cover
33014	1	Air cylinder gasket	236615	1	Muffler cover
33039	1	Gasket	*236616	1	Gasket
34090	1	Air piston packing (Buna-N)	236833	1	Muffler
*34110	1	Plunger packing (Buna-N)	*236835	1	Packing
*34158	1	Cover gasket (Neoprene)	236868	4	Screw
34165	1	O-ring (Buna-N)	236869	6	Screw
34308	1	Gasket (Buna-N)	236870	4	Valve seat bolt
34314	1	O-ring (Buna-N)	237562	1	Air valve casting
*38162	1	Valve seat gasket (Buna-N)	*244313	1	Seat
40821	1	Base casting	*244359	1	O-ring (Buna-N)
*45605	1	Valve guide plate	*245425	1	Trip rod packing nut
48212	2	Air piston washer	246816	1	Packing nut gasket ☉
48237	1	Plunger packing washer	247244	1	Reservoir (Acrylic) ☉
50000	6	Screw	247456	-	Disc (pink) (Pkg of 10) ☉
50521	4	Screw	360383	1	Base

\* Recommended service parts inventory

☉ Indicates Change

---

## TROUBLESHOOTING

Problem	Solution
Pump operates continuously.	Pump has lost prime – Check lubricant supply. Refill reservoir if necessary.  Air pocket trapped in lubricant. Loosen vent plug one turn. Allow pump to operate until trapped air is pumped out. Close vent plug.
Pump continues to operate without discharging lubricant.	Outlet checks 10061 and 66002 may be fouled – Remove and clean checks and check seats.
Pump fails to operate.	Check air supply.

**RETAIN THIS INFORMATION FOR FUTURE REFERENCE**

When ordering replacement parts, list: Part Number, Description, Model Number and Series Letter.  
LINCOLN provides a Distributor Network that stocks equipment and replacement parts.