

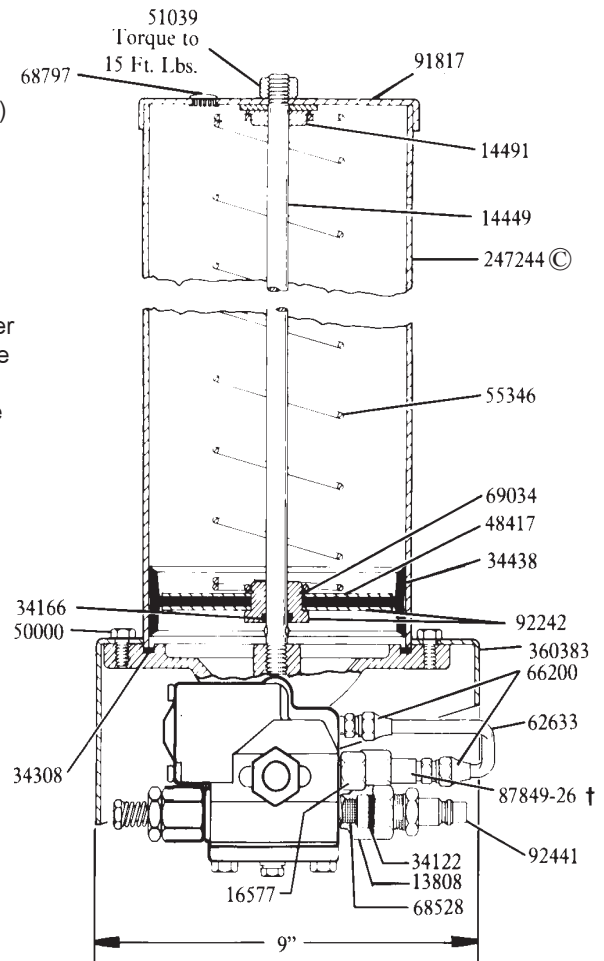
SPECIFICATIONS

RATIO: 40:1
 AIR INLET: 1/8" NPTF (F)
 LUBE OUTLET: 1/4" NPTF
 RESERVOIR CAPACITY: 12 LBS.
 MAX. LUBE OUTPUT/MIN. @ 100 PSI: 12 cu. in.

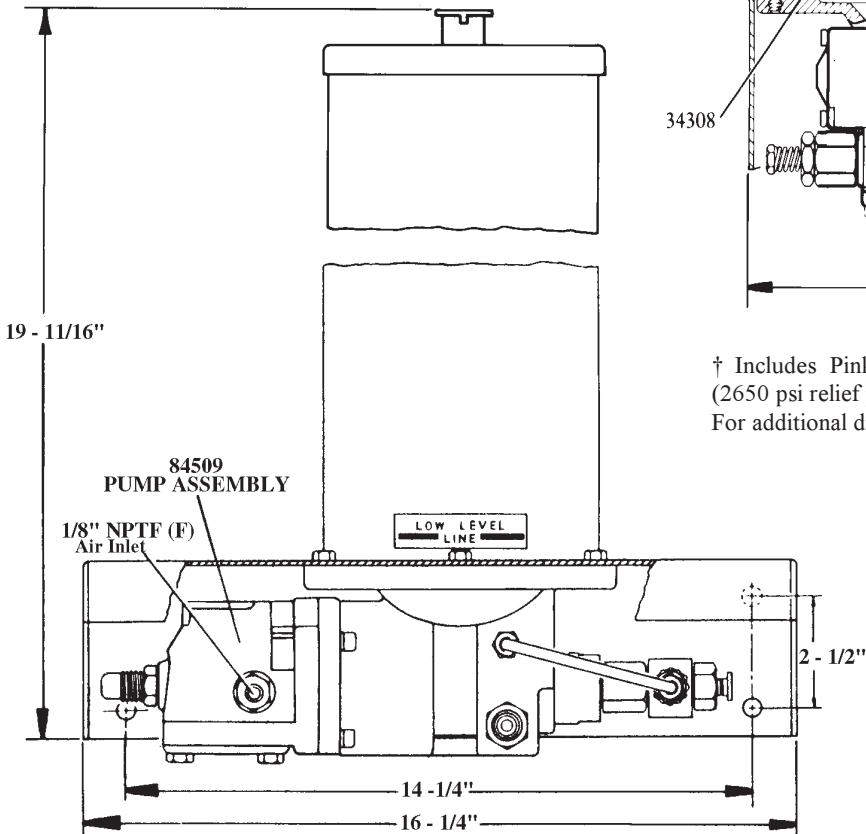
TO FILL RESERVOIR

Use 81834 Manual Filler Pump to fill reservoir through the 92441 Filler Fitting in the pump body. Attach coupler on delivery hose to filler fitting. Stroke filler pump handle until weepage is noted at air vent hole in the reservoir (lower portion of follower must rise beyond air vent hole to expel entrapped air from lubricant).

NOTE: When filling the the reservoir, caution should be used as extreme pressure can cause damage to reservoir and follower assembly.

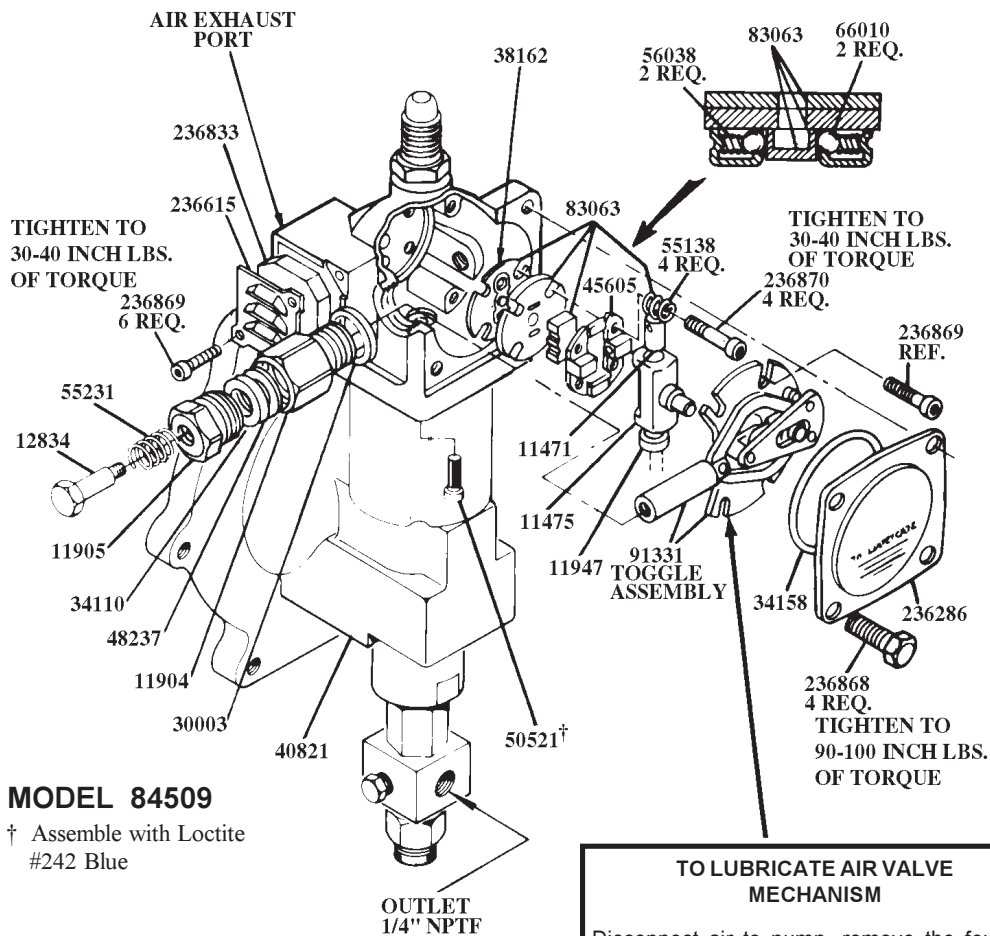


† Includes Pink Rupture disc
 (2650 psi relief pressure, 5 extra discs included)
 For additional discs, order Part No. 247456, Package of 10.



© Indicates change

WARNING
 DO NOT OPERATE
 THIS UNIT WITH
 COMBUSTABLE GAS



MODEL 84509

† Assemble with Loctite #242 Blue

TO LUBRICATE AIR VALVE MECHANISM

Disconnect air to pump, remove the four cover screws, cover plate and cover plate gasket.

Remove and disassemble the air valve casting from the pump.

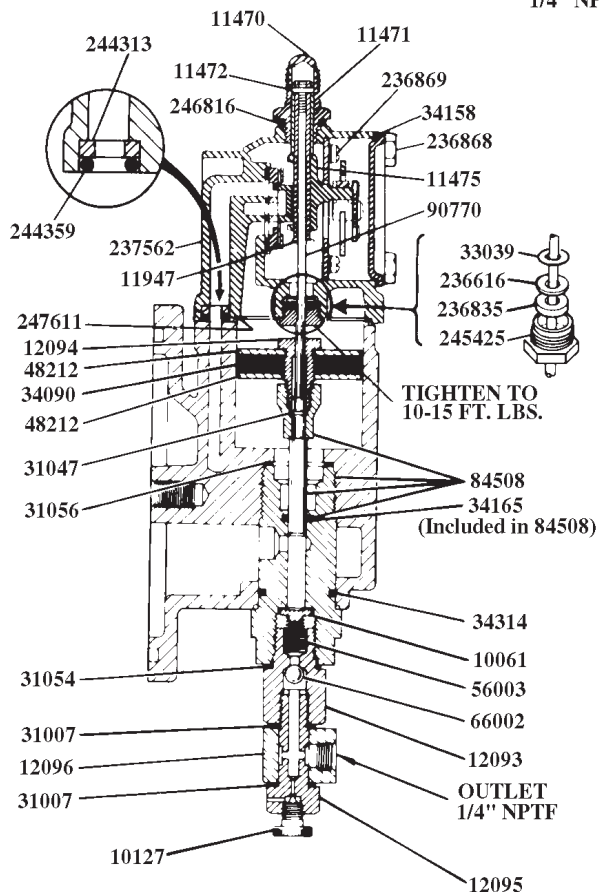
The air valve casting should be cleaned or flushed to remove any chips, or other foreign particles prior to reassembly.

Before replacing the toggle assembly, pack cavity with grease.

Use NLGI No. 1 (lightgrade) water repellent grease. Approximately 1-1/2 ounces.

Replace cover gasket, cover, and screws. Tighten to avoid air leaks.

Periodic inspection of parts at least once each year is advisable.



IMPORTANT - Start fasteners by hand to avoid stripping threads when re-assembling.

© Indicates Change

SERVICE PARTS

Part	Qty.	Description	Part	Qty.	Description
*10061	1	Check disc	55138	4	Valve seat spring
10127	1	Vent plug	55231	1	Spring
11470	1	Valve cap	56003	1	Pump check spring
11471	1	Trip rod collar	56038	2	Equalizer spring
*11472	1	Trip rod pin	62633	1	Steel tubing
*11475	1	Trip shoe	66002	1	Ball
11904	1	Packing nut	*66010	2	Ball
11905	1	Packing cap	66200	2	Tube connector
11947	1	Trip sleeve	67044	1	Pipe plug
12093	1	Check housing	68797	1	Plug Button
12094	1	Air piston bolt	68849	1	Strainer
12095	1	Outlet body	68850	1	Filler cap
12096	1	Outlet block	*83063	1	Valve slide, seat, & gasket
12511	1	Pipe plug	84508	1	Plunger, bushing & O-ring
12834	1	Spring retainer	84509	1	Pump assembly
14449	1	Tie rod	87849-14	1	Rupture assembly
16577	1	Connector	*90770	1	Trip rod
30011	1	Valve cap gasket	*91331	1	Toggle plate
*31007	2	Gasket	91979	1	Reservoir cap
31047	1	Gasket	236286	1	Cover
31054	1	Gasket	236615	1	Muffler cover
31056	1	Gasket	*236616	1	Gasket
33039	1	Gasket	236833	1	Muffler
34090	1	Air piston packing (Nitrile)	*236835	1	Packing (Buna-N)
*34110	1	Plunger packing (Nitrile)	236868	4	Screw
*34158	1	Cover gasket (Neoprene)	236869	6	Screw
34165	1	O-ring (Nitrile)	236870	4	Valve seat bolt
34308	1	Gasket (Nitrile)	237562	1	Air valve casting
34314	1	O-ring (Nitrile)	*244313	1	Seat
*38162	1	Valve seat gasket (Nitrile)	*244359	1	O-ring (Nitrile)
40821	1	Base casting	*245425	1	Trip rod packing nut
*45605	1	Valve guide plate	246816	1	Packing nut gasket
48212	2	Air piston washer	247244	1	Reservoir (Acrylic)
48237	1	Plunger packing washer	247456	-	Disc (pink) (Pkg of 10)
50000	6	Screw	247611	1	Air cylinder gasket (Nitrile coated fiber)
50521	4	Screw	360383	1	Base

* Recommended service parts inventory

© Indicates Change

TROUBLESHOOTING

Problem	Solution
Pump operates continuously.	Pump has lost prime – Check lubricant supply. Refill reservoir if necessary. Air pocket trapped in lubricant. Loosen vent plug one turn. Allow pump to operate until trapped air is pumped out. Close vent plug.
Pump continues to operate without discharging lubricant.	Outlet checks 10061 and 66002 may be fouled – Remove and clean checks and check seats.
Pump fails to operate.	Check air supply.

RETAIN THIS INFORMATION FOR FUTURE REFERENCE

When ordering replacement parts, list: Part Number, Description, Model Number and Series Letter.
LINCOLN provides a Distributor Network that stocks equipment and replacement parts.