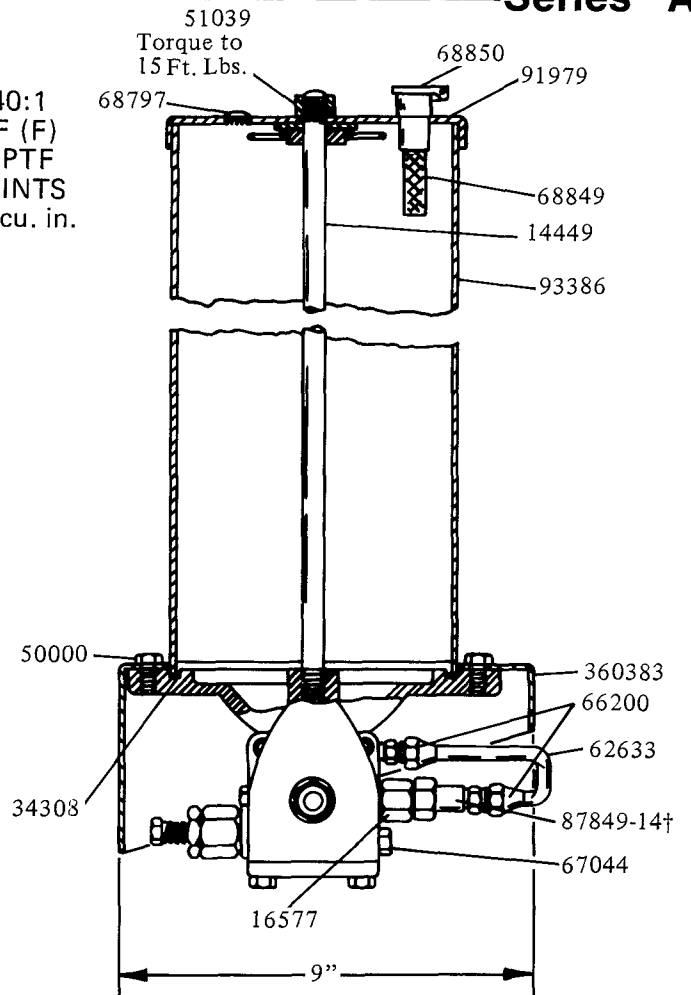


SPECIFICATIONS

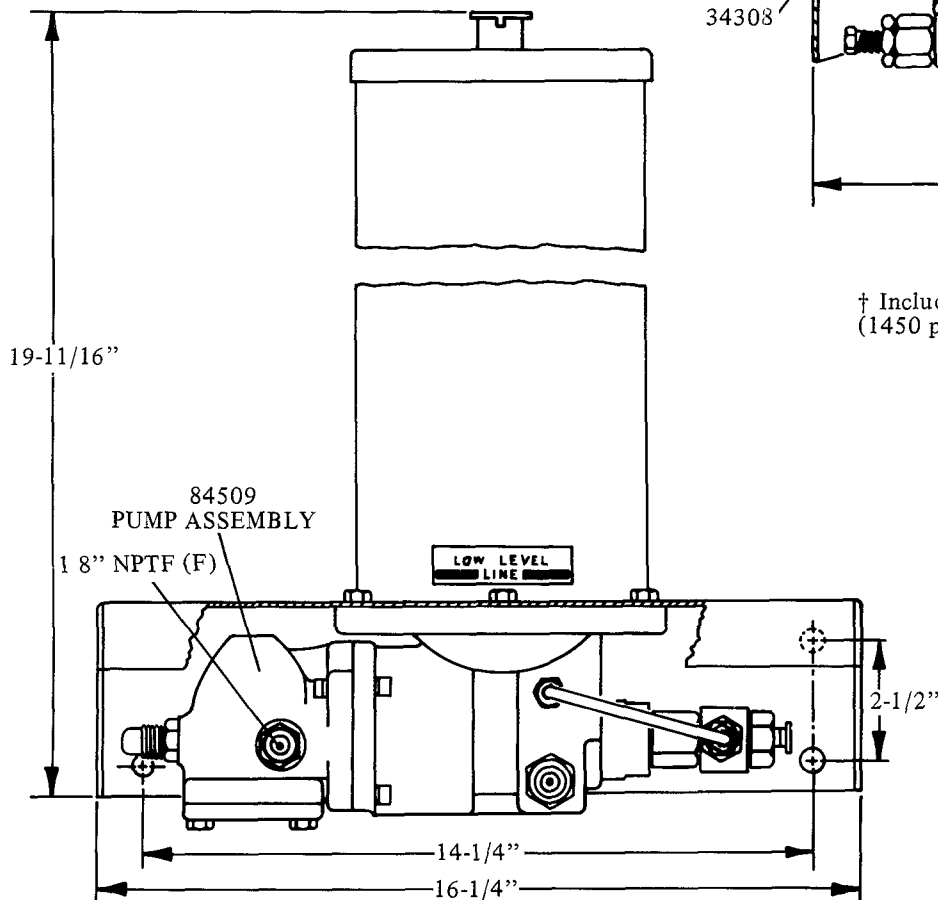
RATIO:.....40:1
 AIR INLET:.....1/8" NPTF (F)
 LUBE OUTLET:.....1/4" NPTF
 RESERVOIR CAPACITY:.....15 PINTS
 MAX. LUBE OUTPUT/MIN. @ 100 PSI:.....12 cu. in.

TO FILL RESERVOIR

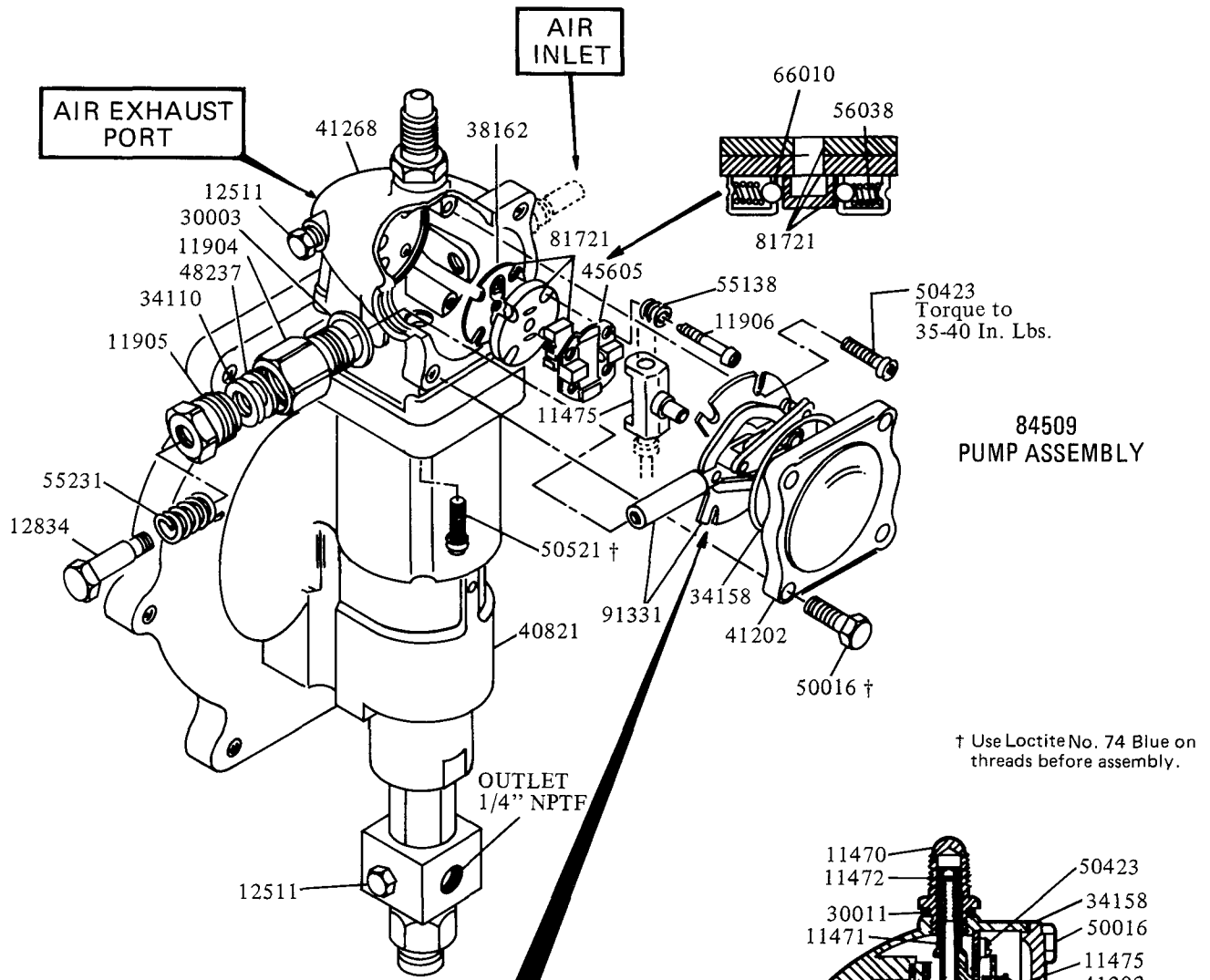
The lubricant reservoir is filled through the filler cap at the top of the reservoir. A strainer is located in the filler cap. The strainer should be removed from the filler cap and cleaned periodically.



† Includes 69813-10 Rupture Disc (1450 psi relief pressure, 5 extra discs included)



WARNING
 DO NOT OPERATE
 THIS UNIT WITH
 COMBUSTABLE GAS



**84509
PUMP ASSEMBLY**

† Use Loctite No. 74 Blue on threads before assembly.

TO LUBRICATE AIR VALVE MECHANISM

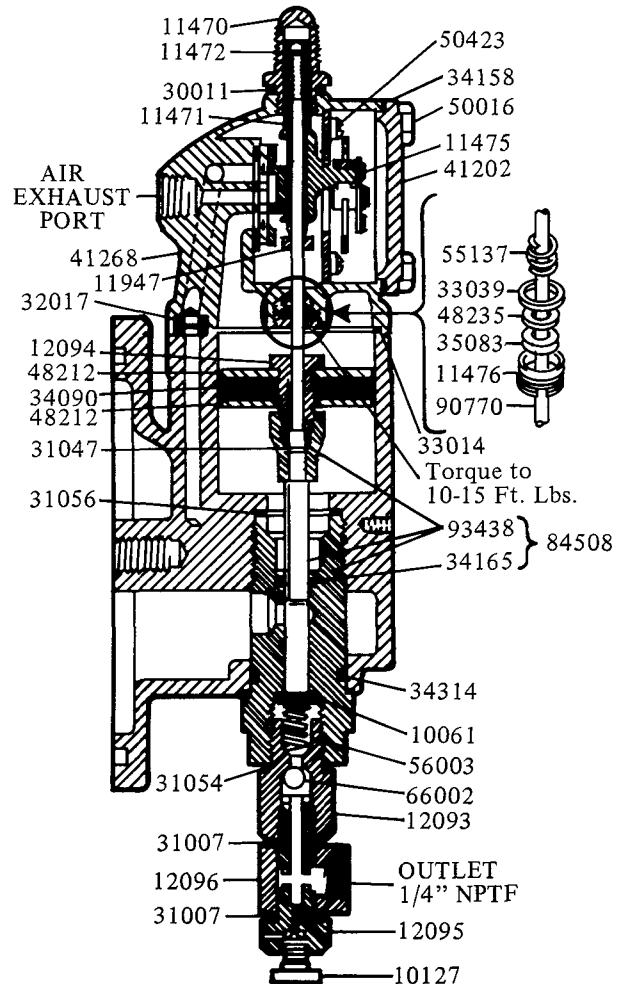
DISCONNECT AIR TO PUMP. REMOVE THE FOUR COVER SCREWS, COVER PLATE AND COVER PLATE GASKET.

GREASE SHOULD THEN BE PACKED BEHIND THE TOGGLE PLATE. USE NLGI NO. 1 (LIGHT GRADE) WATER REPELLENT GREASE. APPROXIMATELY 1-1/2 OUNCES.

IF TOGGLE PLATE HAS BEEN REMOVED FROM AIR-VALVE CASTING, PACK CAVITY WITH GREASE BEFORE REPLACING TOGGLE PLATE.

REPLACE COVER PLATE GASKET, COVER PLATE AND COVER SCREWS. TIGHTEN TO AVOID AIR LEAKS.

PERIODIC INSPECTION OF PARTS AT LEAST ONCE EACH YEAR IS ADVISABLE.



SERVICE PARTS

| PART | QUAN. | DESCRIPTION | PART | QUAN. | DESCRIPTION |
|-------------|--------------|----------------------|-------------|--------------|-----------------------------|
| 10061 | 1 | Check disc | 38162 | 1 | Valve seat gasket |
| 10127 | 1 | Vent plug | 40821 | 1 | Base casting |
| 11470 | 1 | Valve cap | 41202 | 1 | Cover casting |
| 11471 | 1 | Trip rod collar | 41268 | 1 | Air valve casting |
| 11472 | 1 | Trip rod pin | 45605 | 1 | Valve guide plate |
| 11475 | 1 | Trip shoe | 48212 | 2 | Air piston washer |
| 11476 | 1 | Trip rod packing nut | 48235 | 1 | Packing washer |
| 11904 | 1 | Packing nut | 48237 | 1 | Plunger packing washer |
| 11905 | 1 | Packing cap | 50000 | 6 | Screw |
| 11906 | 4 | Valve seat bolt | 50016 | 4 | Screw |
| 11947 | 1 | Trip sleeve | 50423 | 4 | Screw |
| 12093 | 1 | Check housing | 50521 | 4 | Screw |
| 12094 | 1 | Air piston bolt | 51039 | 1 | Nut |
| 12095 | 1 | Outlet body | 55137 | 1 | Trip rod spring |
| 12096 | 1 | Outlet block | 55138 | 4 | Valve seat spring |
| 12511 | 2 | Pipe plug | 55231 | 1 | Spring |
| 12834 | 1 | Spring retainer | 56003 | 1 | Pump check spring |
| 14449 | 1 | Tie rod | 56038 | 2 | Equalizer spring |
| 16577 | 1 | Connector | 62633 | 1 | Steel tubing |
| 30003 | 1 | Packing nut gasket | 66002 | 1 | Ball |
| 30011 | 1 | Valve cap gasket | 66010 | 2 | Ball |
| 31007 | 2 | Gasket | 66200 | 2 | Tube connector |
| 31047 | 1 | Gasket | 67044 | 1 | Pipe plug |
| 31054 | 1 | Gasket | 68797 | 1 | Plug button |
| 31056 | 1 | Gasket | 68849 | 1 | Strainer |
| 32017 | 2 | Gasket | 68850 | 1 | Filler cap |
| 33014 | 1 | Air cylinder gasket | 69813-10 | 6 | Disc (yellow) |
| 33039 | 1 | Packing nut gasket | 81721 | 1 | Valve slide, seat, & gasket |
| 34090 | 1 | Air piston packing | 84508 | 1 | Plunger, bushing & o-ring |
| 34110 | 1 | Plunger packing | 84509 | 1 | Pump ass'y. |
| 34158 | 1 | Cover gasket | 87849-14 | 1 | Rupture ass'y. |
| 34165 | 1 | O-ring | 90770 | 1 | Trip rod |
| 34308 | 1 | Gasket | 91331 | 1 | Toggle plate |
| 34314 | 1 | O-ring | 91979 | 1 | Reservoir cap |
| 35083 | 1 | Trip rod packing | 93386 | 1 | Reservoir |
| | | | 93438 | 1 | Bushing and plunger ass'y. |
| | | | 360383 | 1 | Base |

TROUBLESHOOTING

| PROBLEM | SOLUTION |
|--|--|
| Pump operates continuously. | Pump has lost prime - Check lubricant supply. Refill reservoir if necessary. Air pocket trapped in lubricant. Loosen vent plug one turn. Allow pump to operate until trapped air is pumped out. Close vent plug. |
| Pump continues to operate without discharging lubricant. | Outlet checks 10061 and 66002 may be fouled - Remove and clean checks and check seats. |
| Pump fails to operate. | Check air supply. |

RETAIN THIS INFORMATION FOR FUTURE REFERENCE

When ordering replacement parts, list: Part Number, Description, Model Number, and Series Letter.

LINCOLN provides a Distributor Network that stocks equipment and replacement parts.

A list of Authorized Service Departments will be furnished upon request.