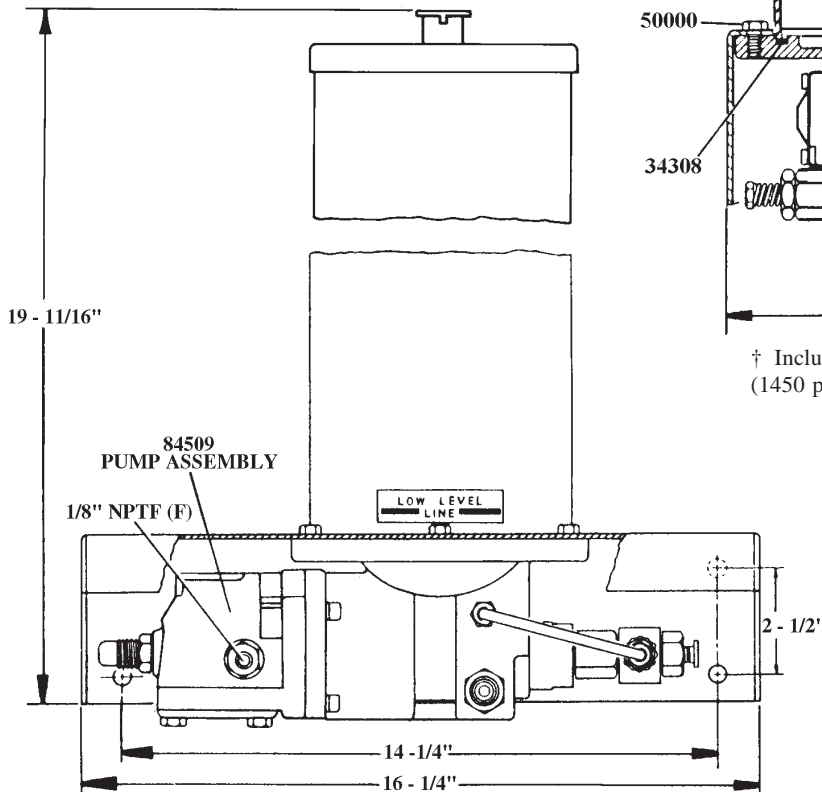
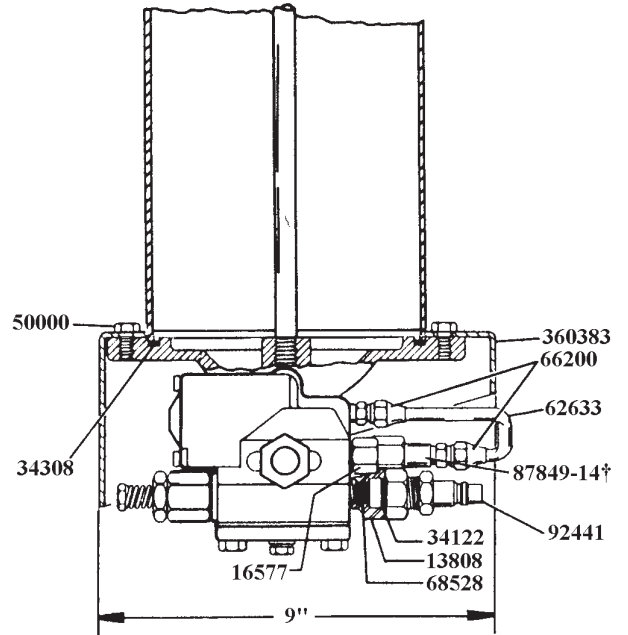
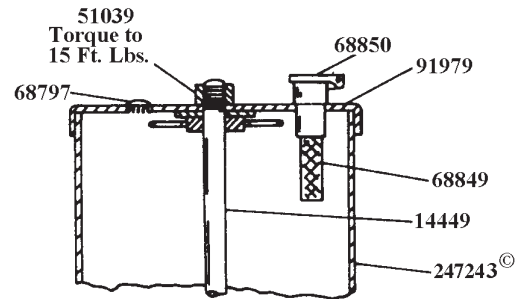


**SPECIFICATIONS**

RATIO: ..... 40:1  
AIR INLET: ..... 1/8" NPTF (F)  
LUBE OUTLET: ..... 1/4" NPTF  
RESERVOIR CAPACITY: ..... 15 PINTS  
MAX. LUBE OUTPUT/MIN. @ 100 PSI: ..... 12 cu. in.

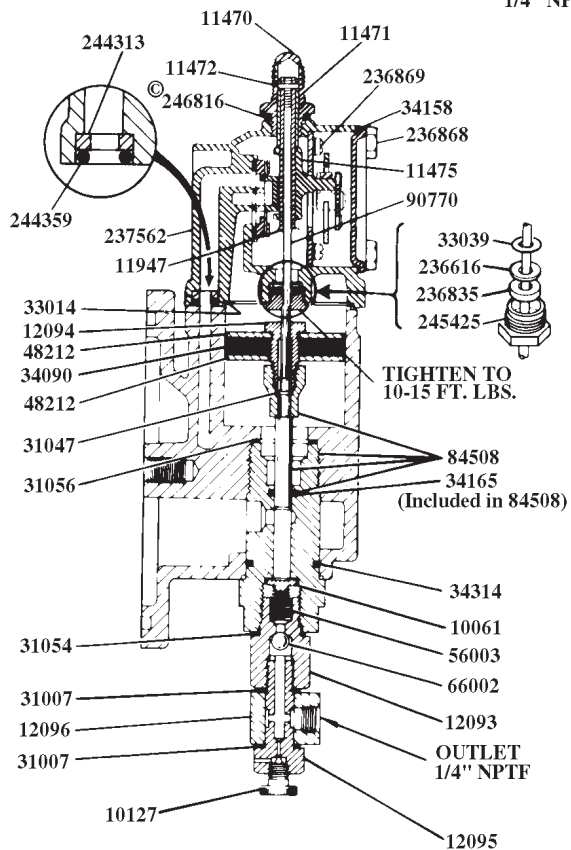
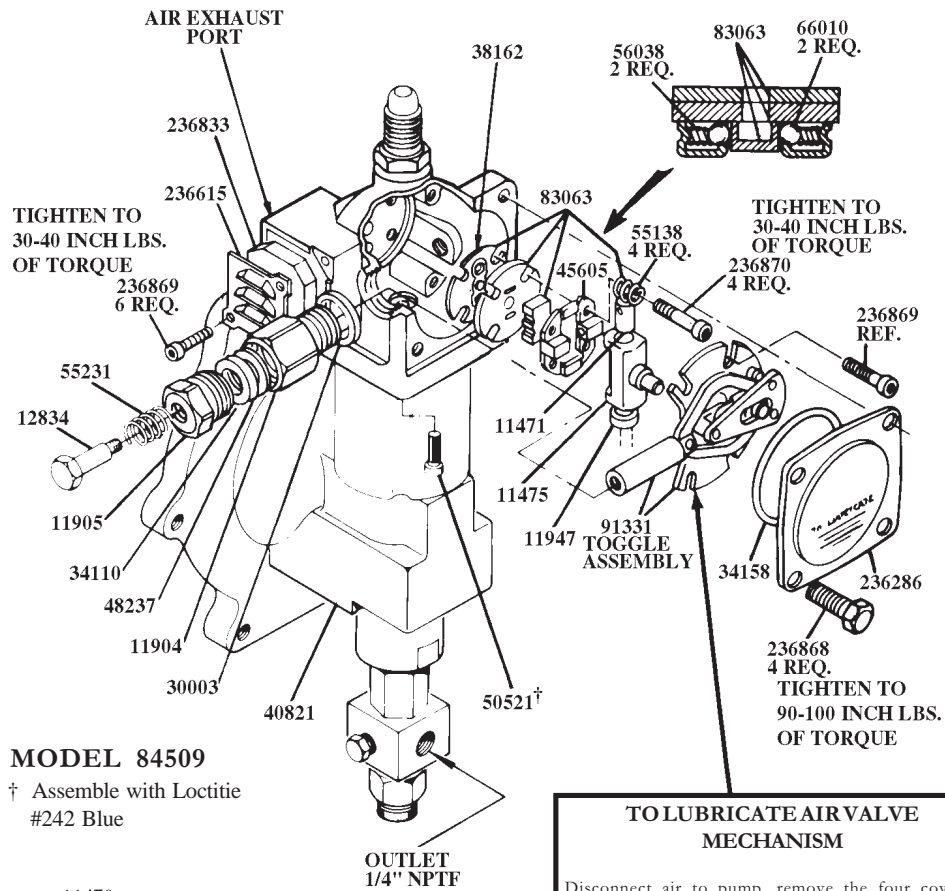
**TO FILL RESERVOIR**

The lubricant reservoir is filled through the filler cap at the top of the reservoir. A strainer is located in the filler cap. The strainer should be removed from the filler cap and cleaned periodically.



© Indicates Change

**WARNING**  
DO NOT OPERATE  
THIS UNIT WITH  
COMBUSTABLE GAS



**TO LUBRICATE AIR VALVE MECHANISM**

Disconnect air to pump, remove the four cover screws, cover plate and cover plate gasket.

Remove and disassemble the air valve casting from the pump.

The airvalve casting should be cleaned or flushed to remove any chips, or other foreign particles prior to re-assembly.

Before replacing the toggle assembly, pack cavity with grease.

Use NLGI No. 1 (lightgrade) water repellent grease. Approximately 1 1/2 ounces.

Replace cover gasket, cover, and screws. Tighten to avoid air leaks.

Periodic inspection of Parts at least once each year is advisable.

**IMPORTANT** - Start fasteners by hand to avoid stripping threads when re-assembling.

© Indicates Change

## SERVICE PARTS

Part No.	Qty.	Description	Part No.	Qty.	Description
*10061	1	Check disc	51039	1	Nut
10127	1	Vent plug	55138	4	Valve seat spring
11470	1	Valve cap	55231	1	Spring
11471	1	Trip rod collar	56003	1	Pump check spring
*11472	1	Trip rod pin	56038	2	Equalizer spring
*11475	1	Trip shoe	62633	1	Steel tubing
11904	1	Packing nut	66002	1	Ball
11905	1	Packing cap	*66010	2	Ball
11947	1	Trip sleeve	66200	2	Tube connector
12093	1	Check housing	67044	1	Pipe plug
12094	1	Air piston bolt	68797	1	Plug Button
12095	1	Outlet body	68849	1	Strainer
12096	1	Outlet block	68850	1	Filler cap
12511	1	Pipe plug	69813-10	-	Disc (yellow) (Pkg of 10)
12834	1	Spring retainer	*83063	1	Valve slide, seat, & gasket
14449	1	Tie rod	84508	1	Plunger, bushing & O-ring
16577	1	Connector	84509	1	Pump assembly
30011	1	Valve cap gasket	87849-14	1	Rupture assembly
*31007	2	Gasket	*90770	1	Trip rod
31047	1	Gasket	*91331	1	Toggle plate
31054	1	Gasket	91979	1	Reservoir cap
31056	1	Gasket	93438	1	Bushing and plunger assembly
33014	1	Air cylinder gasket	236286	1	Cover
33039	1	Gasket	236615	1	Muffler cover
34090	1	Air piston packing (Buna-N)	*236616	1	Gasket
*34110	1	Plunger packing (Buna-N)	236833	1	Muffler
*34158	1	Cover gasket (Neoprene)	*236835	1	Packing
34165	1	O-ring (Buna-N)	236868	4	Screw
34308	1	Gasket (Buna-N)	236869	6	Screw
34314	1	O-ring (Buna-N)	236870	4	Valve seat bolt
*38162	1	Valve seat gasket (Buna-N)	237562	1	Air valve casting
40821	1	Base casting	*244313	1	Seat
*45605	1	Valve guide plate	*244359	1	O-ring (Buna-N)
48212	2	Air piston washer	*245425	1	Trip rod packing nut
48237	1	Plunger packing washer	246816	1	Packing nut gasket
50000	6	Screw	247243	1	Reservoir (Acrylic)
50521	4	Screw	360383	1	Base

\* Recommended service parts inventory

© Indicates Change

---

## TROUBLESHOOTING

Problem	Solution
Pump operates continuously.	Pump has lost prime – Check lubricant supply. Refill reservoir if necessary.  Air pocket trapped in lubricant. Loosen vent plug one turn. Allow pump to operate until trapped air is pumped out. Close vent plug.
Pump continues to operate without discharging lubricant.	Outlet checks 10061 and 66002 may be fouled – Remove and clean checks and check seats.
Pump fails to operate.	Check air supply.

**RETAIN THIS INFORMATION FOR FUTURE REFERENCE**

When ordering replacement parts, list: Part Number, Description, Model Number and Series Letter.  
LINCOLN provides a Distributor Network that stocks equipment and replacement parts.