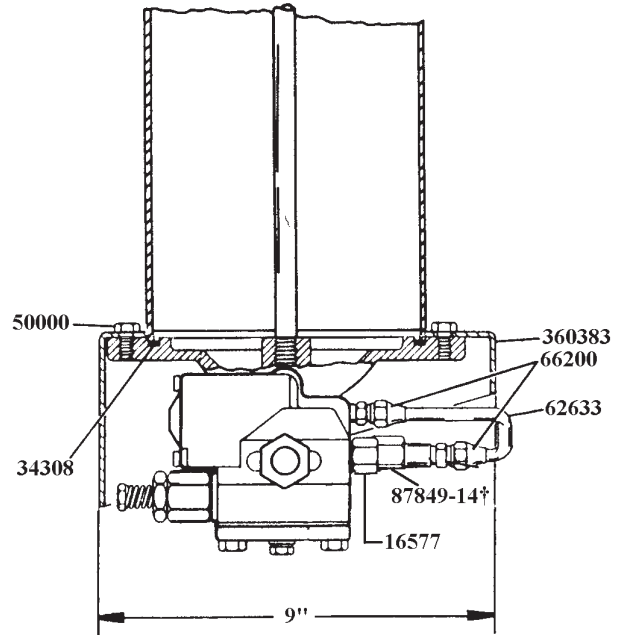
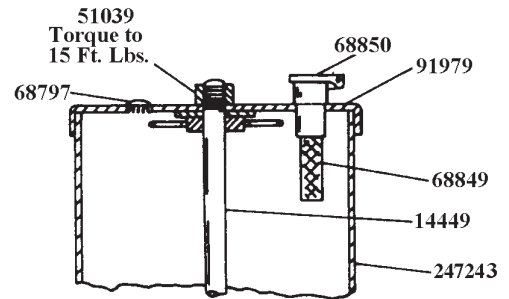


SPECIFICATIONS

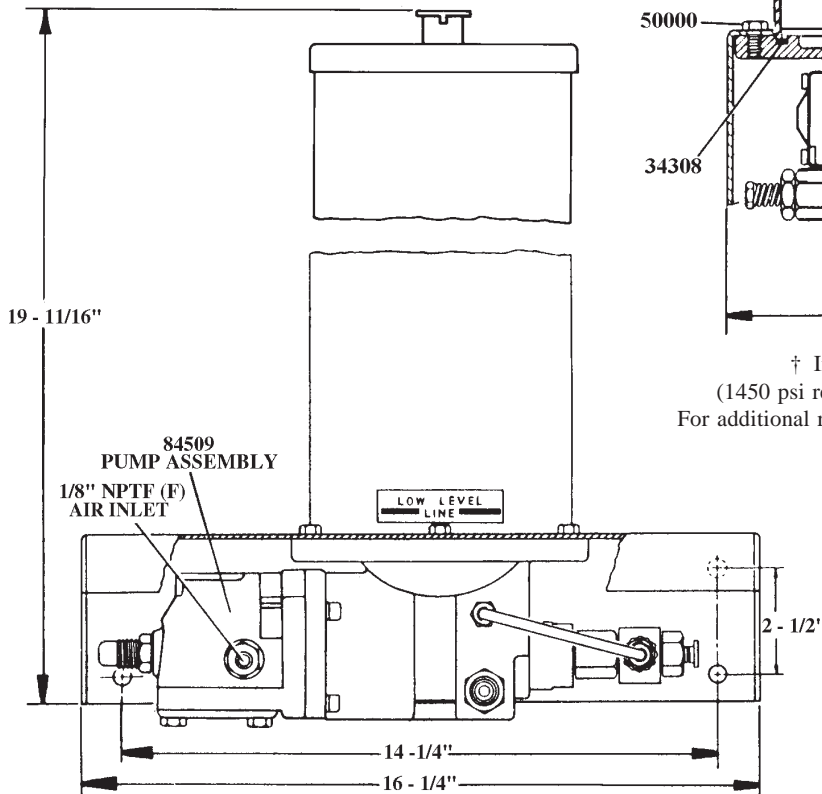
RATIO: 40:1
 AIR INLET: 1/8" NPTF (F)
 LUBE OUTLET: 1/4" NPTF
 RESERVOIR CAPACITY: 15 PINTS
 MAX. LUBE OUTPUT/MIN. @ 100 PSI: 12 cu. in.
 MAX. OPERATING AIR PRESSURE 100 PSI

TO FILL RESERVOIR

The lubricant reservoir is filled through the filler cap at the top of the reservoir. A strainer is located in the filler cap. The strainer should be removed from the filler cap and cleaned periodically.

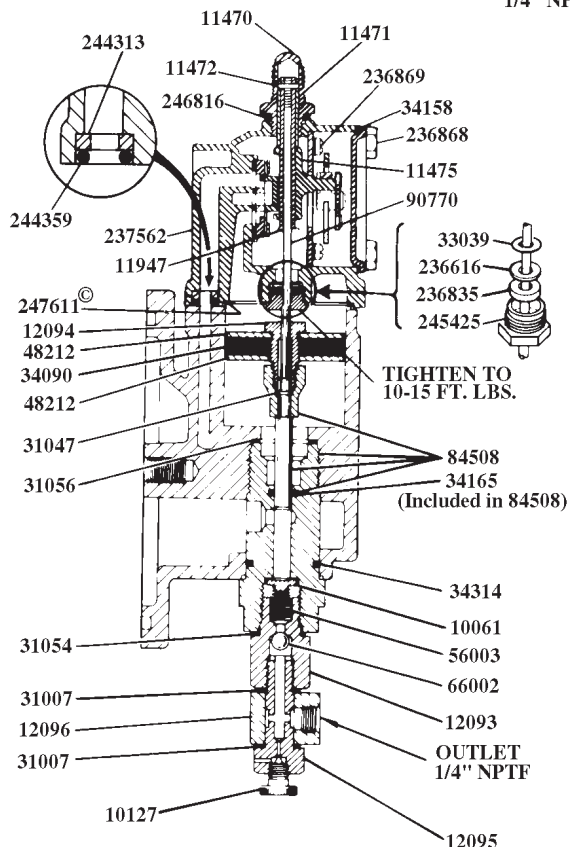
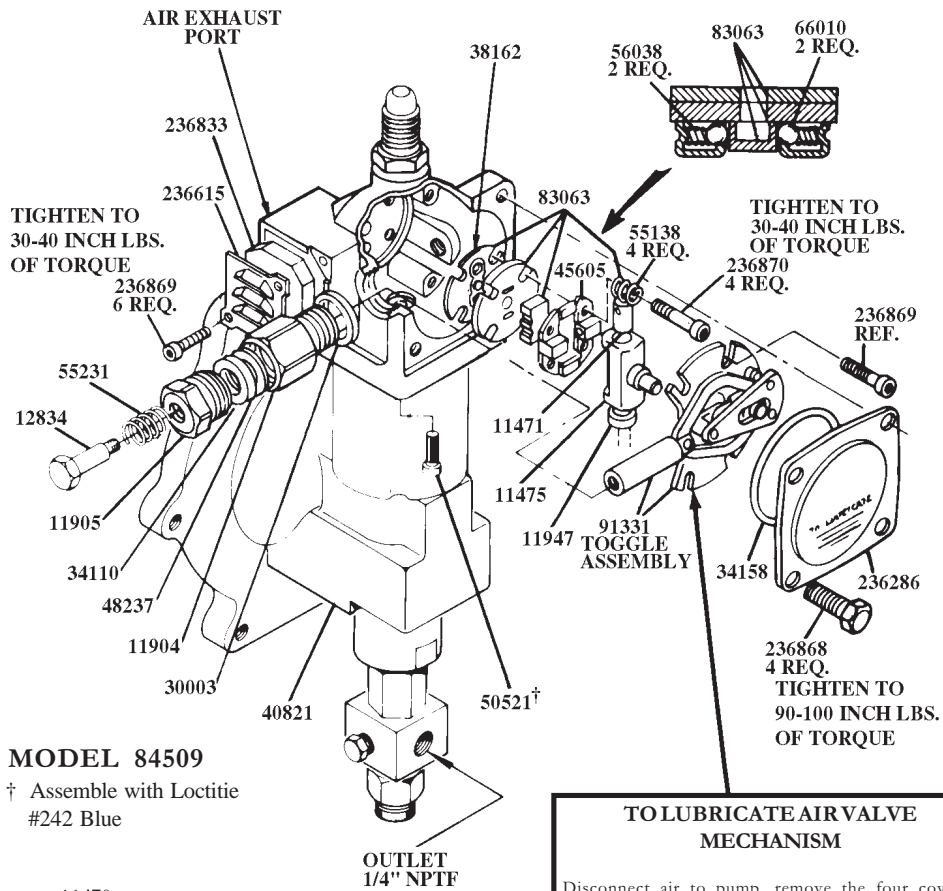


† Includes Yellow Rupture disc
 (1450 psi relief pressure, 5 extra discs included
 For additional replacement discs, order Part #69813-10,
 pkg of 10 discs.)©



WARNING
 DO NOT OPERATE
 THIS UNIT WITH
 COMBUSTABLE GAS

© Indicates Change



TO LUBRICATE AIR VALVE MECHANISM

Disconnect air to pump, remove the four cover screws, cover plate and cover plate gasket.

Remove and disassemble the air valve casting from the pump.

The airvalve casting should be cleaned or flushed to remove any chips, or other foreign particles prior to re-assembly.

Before replacing the toggle assembly, pack cavity with grease.

Use NLGI No. 1 (lightgrade) water repellent grease. Approximately 1 1/2 ounces.

Replace cover gasket, cover, and screws. Tighten to avoid air leaks.

Periodic inspection of Parts at least once each year is advisable.

IMPORTANT - Start fasteners by hand to avoid stripping threads when re-assembling.

© Indicates Change

SERVICE PARTS

Part No.	Qty.	Description	Part No.	Qty.	Description
*10061	1	Check disc	51039	1	Nut
10127	1	Vent plug	55138	4	Valve seat spring
11470	1	Valve cap	55231	1	Spring
11471	1	Trip rod collar	56003	1	Pump check spring
*11472	1	Trip rod pin	56038	2	Equalizer spring
*11475	1	Trip shoe	62633	1	Steel tubing
11904	1	Packing nut	66002	1	Ball
11905	1	Packing cap	*66010	2	Ball
11947	1	Trip sleeve	66200	2	Tube connector
12093	1	Check housing	67044	1	Pipe plug
12094	1	Air piston bolt	68797	1	Plug Button
12095	1	Outlet body	68849	1	Strainer
12096	1	Outlet block	68850	1	Filler cap
12511	1	Pipe plug	*83063	1	Valve slide, seat, & gasket
12834	1	Spring retainer	84508	1	Plunger, bushing & O-ring
14449	1	Tie rod	84509	1	Pump assembly
16577	1	Connector	87849-14	1	Rupture assembly
30011	1	Valve cap gasket	*90770	1	Trip rod
*31007	2	Gasket	*91331	1	Toggle plate
31047	1	Gasket	91979	1	Reservoir cap
31054	1	Gasket	236286	1	Cover
31056	1	Gasket	236615	1	Muffler cover
33039	1	Gasket	*236616	1	Gasket
34090	1	Air piston packing (Nitrile coated fiber)	236833	1	Muffler
*34110	1	Plunger packing (Nitrile)	*236835	1	Packing (Nitrile)
*34158	1	Cover gasket (Neoprene)	236868	4	Screw
34165	1	O-ring (Nitrile)	236869	6	Screw
34308	1	Gasket (Nitrile)	236870	4	Valve seat bolt
34314	1	O-ring (Nitrile)	237562	1	Air valve casting
*38162	1	Valve seat gasket (Nitrile)	*244313	1	Seat
40821	1	Base casting	*244359	1	O-ring (Nitrile)
*45605	1	Valve guide plate	*245425	1	Trip rod packing nut
48212	2	Air piston washer	246816	1	Packing nut gasket
48237	1	Plunger packing washer	247243	1	Reservoir (Acrylic)
50000	6	Screw	©247611	1	Air cylinder gasket (Nitrile coated fiber)
50521	4	Screw	360383	1	Base

* Recommended service parts inventory

© Indicates Change

TROUBLESHOOTING

Problem	Solution
Pump operates continuously.	Pump has lost prime – Check lubricant supply. Refill reservoir if necessary. Air pocket trapped in lubricant. Loosen vent plug one turn. Allow pump to operate until trapped air is pumped out. Close vent plug.
Pump continues to operate without discharging lubricant.	Outlet checks 10061 and 66002 may be fouled – Remove and clean checks and check seats.
Pump fails to operate.	Check air supply.

RETAIN THIS INFORMATION FOR FUTURE REFERENCE

When ordering replacement parts, list: Part Number, Description, Model Number and Series Letter.
LINCOLN provides a Distributor Network that stocks equipment and replacement parts.