

OPERATION & INSTALLATION

The 130177 and 130245 Pumps are pneumatically powered valved piston pumps, with pump cycles controlled by a timer in conjunction with a solenoid valve. Pumps develop a 25:1 ratio of lubricant to air pressure using a minimum pneumatic pressure of 40 psi and a maximum of 150 psi. A rupture indicator is supplied to warn of excessive lubricant pressure (above 1450 psi).

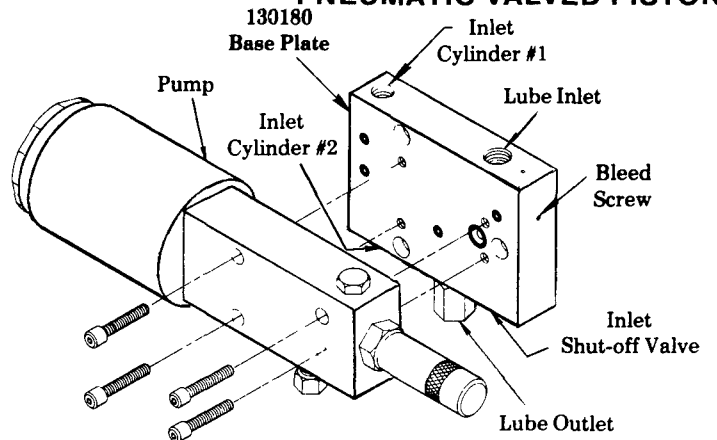
If maximum pump speed is desired, inlet lube pressure must be increased proportionally (not to exceed 2000 psi or 20 times the air pressure).

Lubricant output is adjustable from .025 - .100 cu. in. per stroke. One complete turn of the adjustment screw will change the lubricant output by .004 cu. in. per stroke. To increase lubricant output turn adjustment screw counter-clockwise. To decrease output turn adjustment screw clockwise.

All piping is connected to the 130180 Base Plate, allowing the pump to be removed without disturbing the existing piping. An inlet shut-off valve in the base plate permits the removal of the pump without draining the reservoir. A bleed screw is provided in the base block to purge the pump during installation or when the reservoir was allowed to run dry.

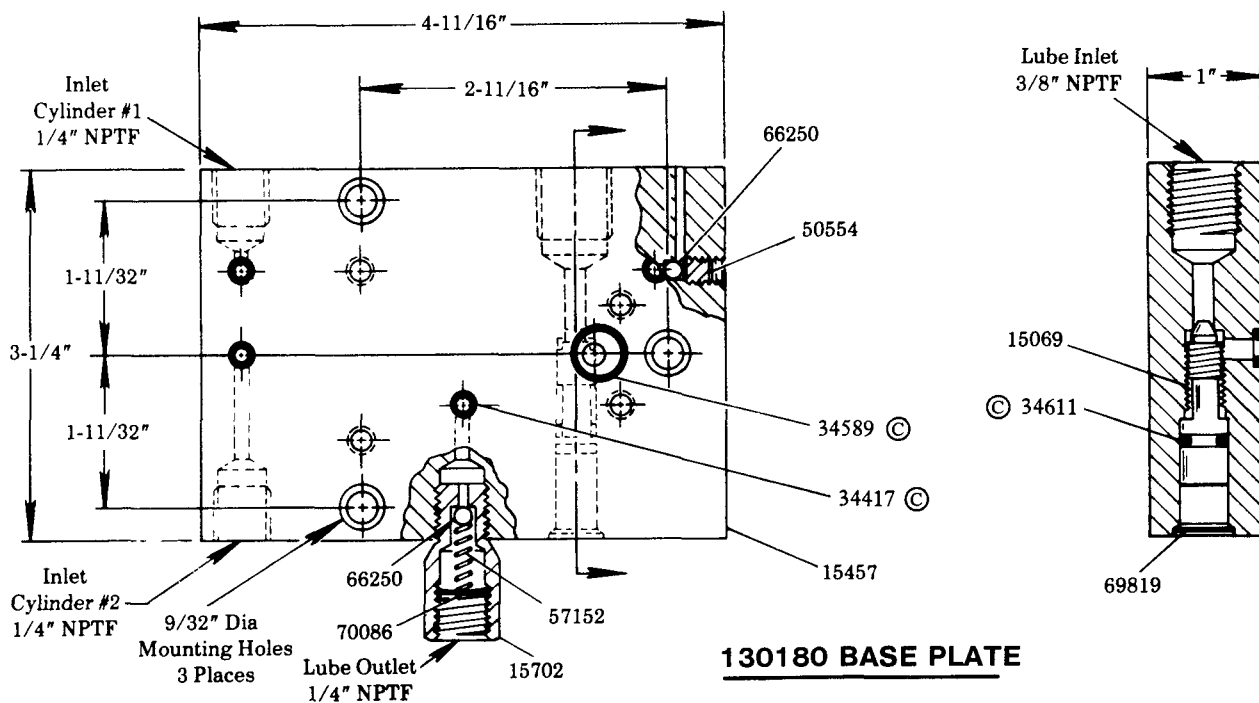
These pumps can be used equally well with grease or oil to supply Modular Lube Systems. O-ring seals suitable for use with synthetic base or petroleum base lubricants are standard with the 130180 Base Plate.

AUTOMATION PUMP PNEUMATIC VALVED PISTON



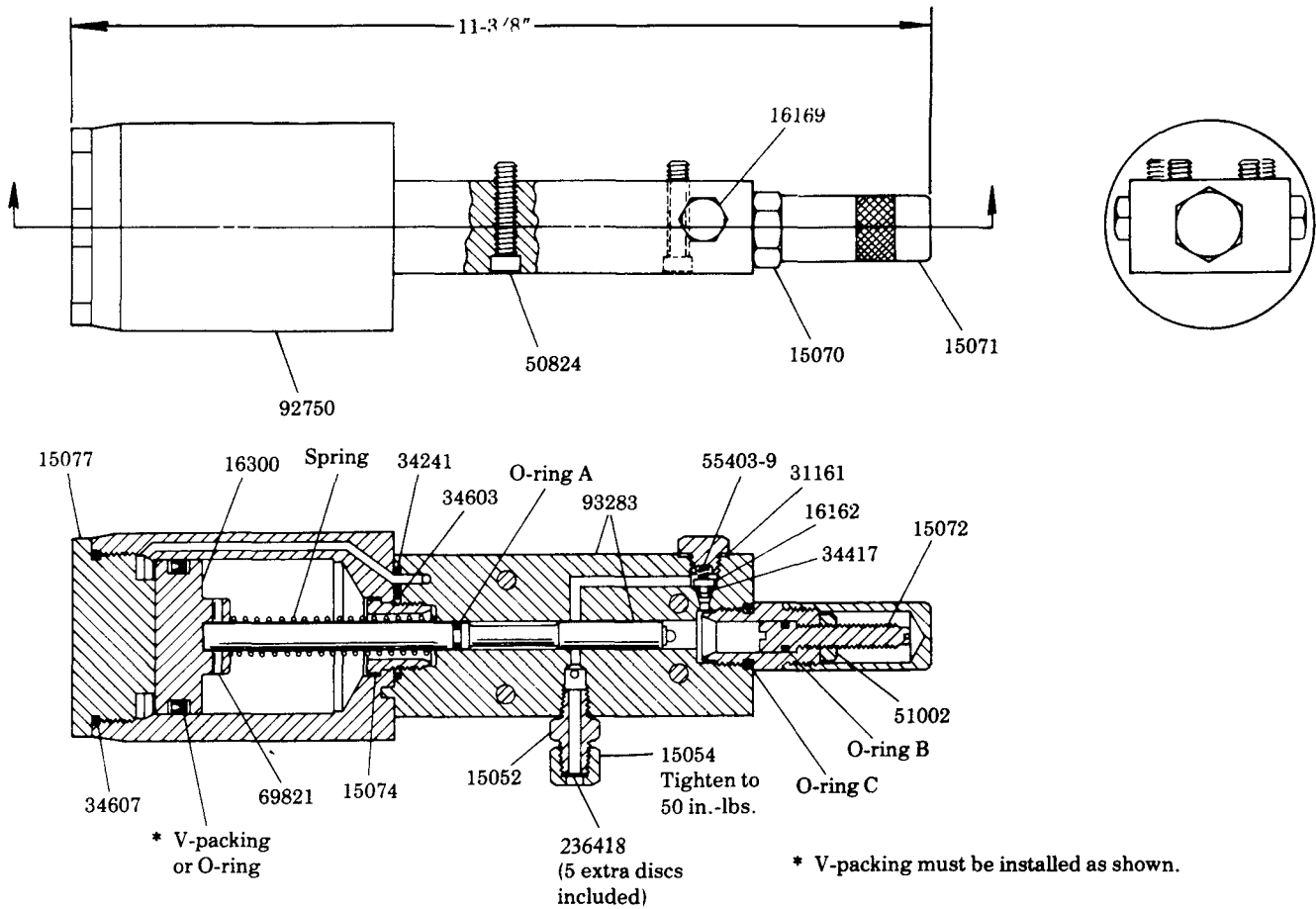
The **130177 (Viton O-rings)** single acting piston pump has one pneumatic connection to power the piston on the delivery stroke. A spring returns the piston to prime position. Air pressure from a three-way solenoid valve is connected to Inlet Cylinder #1. Installing 69295 Screen (not shown) into Inlet Cylinder #2 is recommended. The 130177 Pump can operate at a maximum of 30 strokes per minute with oil, 22 strokes per minute with grease.

The **130245 (Viton O-rings)** is a single acting piston pump with a double acting air cylinder using air pressure to power the piston on the delivery stroke and return it to priming position. Air pressure from a four-way solenoid is connected to Inlet Cylinder #1 and #2. The 130245 Pump can operate at a maximum of 100 strokes per minute with oil, 36 strokes per minute with grease.



130180 BASE PLATE

© Indicates Change



| Model | O-Rings | Return | Spring | V-Packing | O-Ring | O-Ring A | O-Ring B | O-Ring C |
|--------|---------|--------|--------|-----------|--------|----------|----------|----------|
| 130177 | Viton | Spring | 55380 | 34751 | — | 34611 | 34610 | 34609 |
| 130245 | Viton | Air | — | — | 34667 | 34611 | 34610 | 34609 |

SERVICE PARTS

| Part | Qty. | Description | Part | Qty. | Description |
|-------|------|------------------------|---------|------|---------------------------|
| 15052 | 1 | Connector | 34603 | 1 | O-ring (Buna-N) |
| 15054 | 1 | Nut | 34607 | 1 | O-ring (Buna-N) |
| 15069 | 1 | Inlet Valve | 34611 | 1 | O-ring (Viton) |
| 15070 | 1 | Adjustment housing | 50554 | 1 | Screw |
| 15071 | 1 | Adjustment screw cover | 50824 | 4 | Screw |
| 15072 | 1 | Adjustment screw | 51002 | 1 | Nut |
| 15074 | 1 | Coupling nut | 55403-9 | 1 | Spring |
| 15077 | 1 | Piston enclosure screw | 57152 | 1 | Spring |
| 15457 | 1 | Base plate | 66250 | 2 | Ball |
| 15702 | 1 | Body | 69295 | 1 | Screen (not shown) |
| 16162 | 1 | Check | 69819 | 1 | Retainer |
| 16169 | 1 | Check valve plug | 69821 | 1 | Roll pin |
| 16300 | 1 | Pneumatic plunger | 70086 | 1 | Retainer |
| 31161 | 1 | Gasket | 92750 | 1 | Piston enclosure assembly |
| 34241 | 1 | O-ring (Buna-N) | 93283 | 1 | Body & pin assembly |
| 34417 | 5 | O-ring (Viton) | 236418 | 1 | Disc (yellow colored) |
| 34589 | 1 | O-ring (Viton) | | | |

RETAIN THIS INFORMATION FOR FUTURE REFERENCE

When ordering replacement parts, list: Part Number, Description, Model Number, and Series Letter.

LINCOLN provides a Distributor Network that stocks equipment and replacement parts.