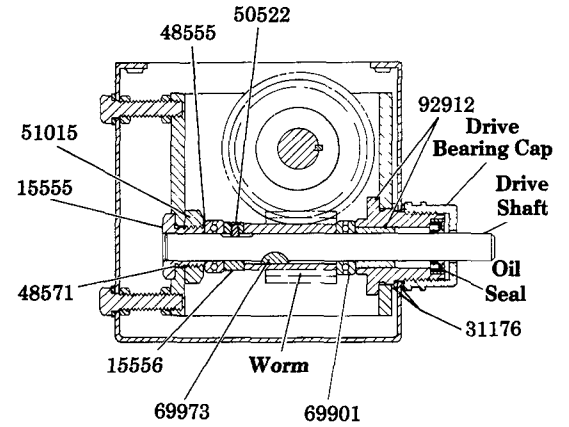
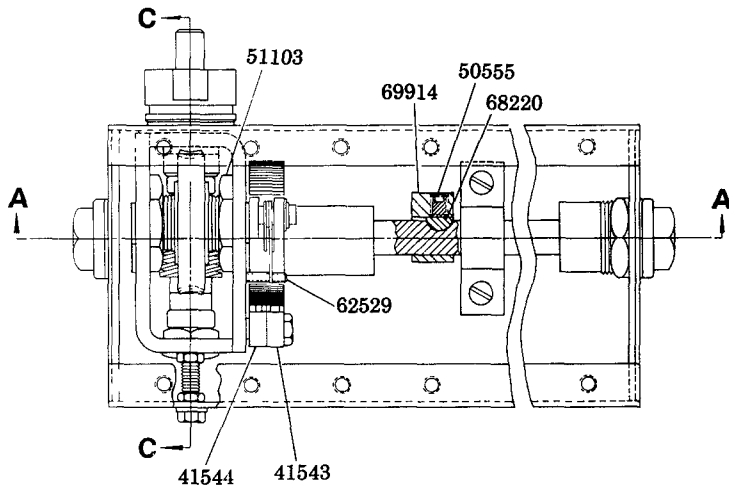
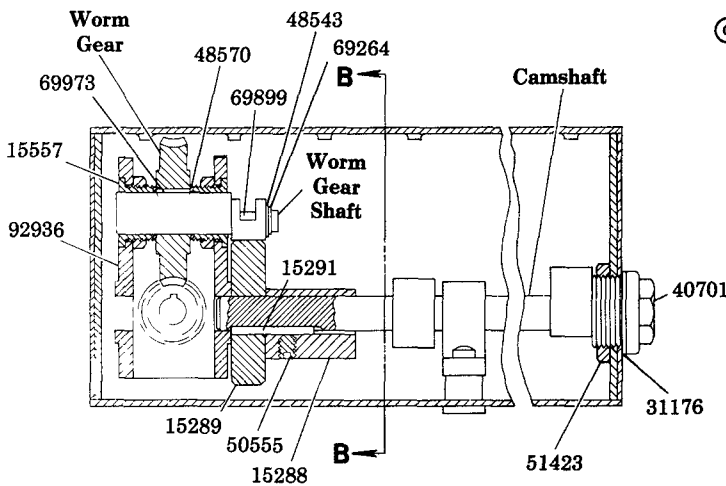


ROTARY DRIVE ADAPTATION

END INTERNAL REAR ROTARY DRIVE

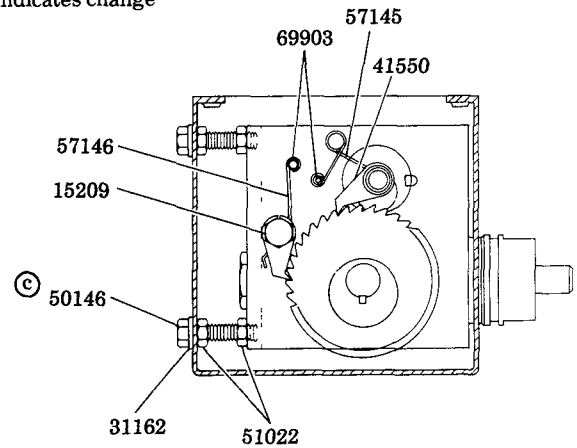


SECTION C-C



SECTION A-A

© Indicates change



SECTION B-B

DISASSEMBLY INSTRUCTIONS

1. Removal of pumps, filler assembly and cover plate allows access to the lubricator drive.
2. Loosen set screws holding cam lobes and drive eccentric to camshaft. Move cams clear of their woodruff keys and remove keys. Unscrew 51423 Nut from 40701 End Bearing and remove end bearing and 31176 Washer. Withdraw camshaft from reservoir while removing 15289 Ratchet, 15291 Square Key and 15288 Drive Eccentric, or 66642 Woodruff Key and 69548 Retaining Ring, cam lobes and nut.
3. Unscrew Drive Bearing Cap and remove cap with 31176 Washer. Back off 51022 Nuts and remove 50146 Screws, 31162 Washers and nuts. Lift gear box out of reservoir and remove 31176 Washer from back of gear box.
4. Remove 69264 Retaining Ring and 48543 Washer from end of the Worm Gear Shaft to allow removal of the 41550 Pawl, 69899 Bearing Liner and 57145 Pawl Springs. Unscrew one 51103 Nut and remove 15557 Bearing. Withdraw worm gear shaft from gear box and remove loose parts. Unscrew remaining 51103 Nut and remove 15557 Bearing. Unscrew 15209 Pawl Pin and remove 41543 and 41544 Pawls and 57146 Pawl Springs from gear box.
5. Unscrew 15555 End Bearing and loosen 50522 Set Screw. Pull drive shaft through 92912 Drive Bearing Assembly to allow removal of 51015 Crank Shaft Nut, 69901 Thrust Bearing and 15556 Spacer. Move worm clear of its woodruff key and remove key. Withdraw drive shaft from gear box leaving worm, second 69901 Thrust Bearing and 92912 Drive Bearing Assembly loose.
6. To assemble, reverse disassembly instructions.

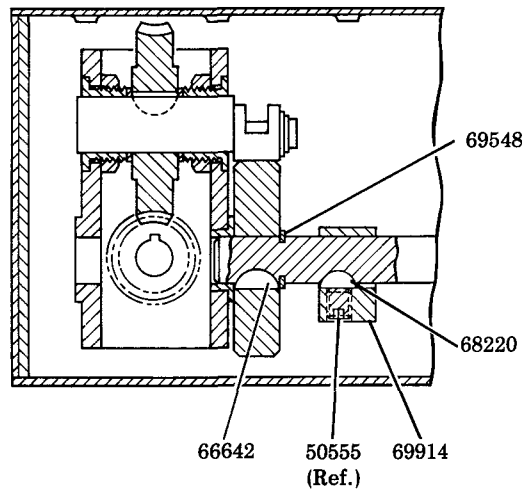
LINCOLN ST. LOUIS
4010 GOODFELLOW BLVD • ST. LOUIS, MO 63120 • (314) 383 5900



SECTION - **M3**
PAGE - **18A**

| LUBRICATOR | SIZE | RATIO | WORM | WORM GEAR | WORM GEAR SHAFT | OIL SEAL | CAMSHAFT | DRIVE SHAFT | DRIVE BEARING CAP |
|------------|--------|---------|-------|-----------|-----------------|----------|----------|-------------|-------------------|
| *800392 | 3 Pt. | 375:1 | 15253 | 15586 | 15716 | 69984 | 16331 | 16332 | 16233 |
| 800784 | 1 Gal. | 137.5:1 | 15274 | 15273 | 15820 | 70041 | 16213 | 16211 | 15655 |
| 800993 | 1 Gal. | 137.5:1 | 15274 | 15273 | 15820 | 70041 | 16213 | 16467 | 93483 |
| 800994 | 1 Gal. | 137.5:1 | 15274 | 15273 | 15820 | 70041 | 16213 | 16467 | 93483 |

* Refer to illustration below.



15288 Drive Eccentric and 15291 Square Key are replaced by 66642 Woodruff Key, 69548 Retaining Ring, 69914 Cam Lobe and 68220 Woodruff Key on the 800392 Lubricator. (Refer to illustration.)

SERVICE PARTS

| PART | QUAN. | DESCRIPTION | PART | QUAN. | DESCRIPTION |
|-------|-----------|-----------------|-------|-------|------------------------|
| 15209 | 1 | Pawl pin | 50555 | ** | Set screw |
| 15288 | 1 | Drive eccentric | 51015 | 1 | Crank shaft nut |
| 15289 | 1 | Ratchet | 51022 | 4 | Nut |
| 15291 | 1 | Square key | 51103 | 2 | Nut |
| 15555 | 1 | End bearing | 51423 | 1 | Nut |
| 15556 | 1 | Spacer | 57145 | 2 | Pawl spring |
| 15557 | 2 | Bearing | 57146 | 2 | Pawl spring |
| 31162 | 2 | Washer | 62529 | 1 | Spring pin bearing |
| 31176 | 3 | Washer | 66642 | 1 | #61 Woodruff key |
| 40701 | 1 | End bearing | 68220 | ** | #3 Woodruff key |
| 41543 | 1 | Pawl | 69264 | 1 | Retaining ring |
| 41544 | 1 | Pawl | 69548 | 1 | Retaining ring |
| 41550 | 1 | Pawl | 69899 | 1 | Bearing liner |
| 48543 | 1 | Washer | 69901 | 2 | Thrust bearing |
| 48555 | As req'd. | Shim | 69903 | 2 | Pawl spring pin |
| 48570 | 2 | Thrust washer | 69914 | ** | Cam lobe |
| 48571 | As req'd. | Shim | 69973 | 2 | #5 Woodruff key |
| 50146 | 2 | Screw | 92912 | 1 | Drive bearing assembly |
| 50522 | 1 | Set screw | 92936 | 1 | Gear box assembly |
| 50555 | 1 | Set screw | | | |

**One per pump station.

RETAIN THIS INFORMATION FOR FUTURE REFERENCE

When ordering replacement parts, list: Part Number, Description, Model Number, and Series Letter.
LINCOLN ST. LOUIS provides a Distributor Network that stocks equipment and replacement parts.