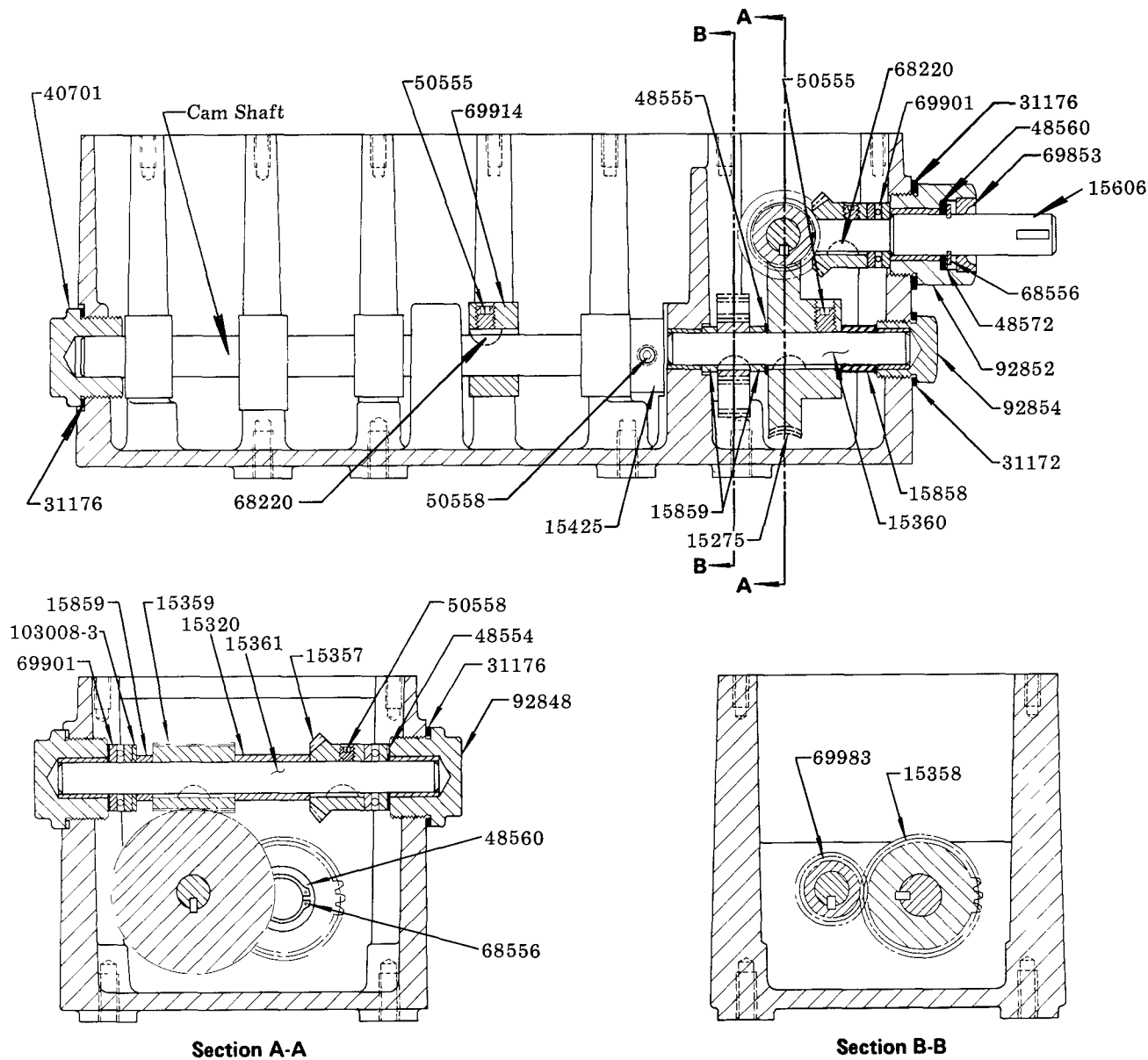


# ROTARY DRIVE ADAPTATION

R.H. END DRIVE, 111:1 RATIO



Section A-A

Section B-B

MODEL	CAMSHAFT
800012-1	15661
800012-2	15661
800012-3	15661
800107-0	15605
800107-1	15605
800107-2	15605
800107-3	15605
800107-4	15605
800107-5	15605
800107-6	15605

**LINCOLN ST. LOUIS**  
4010 GOODFELLOW BLVD • ST LOUIS, MO. 63120 • (314) 383-5900



A DIVISION OF  
**McNEIL**  
CORPORATION

SECTION - **M3**  
PAGE - **1A**

## DISASSEMBLY INSTRUCTIONS

Removal of all Model "55" Pumps and the Cover Plate Assembly allows access to the Lubricator Drive Assembly.

Loosen 50558 Set Screw holding 15357 Miter Gear to Drive Shaft and unscrew 92852 Stuffing Box Assembly from reservoir to allow removal of Drive Shaft, Miter Gear and 69901 Thrust Bearing. To remove Oil Seal from Stuffing Box, push Drive Shaft through from back of Stuffing Box. Truarc Ring and Shim holding Shaft in place will push Oil Seal out.

Loosen Set Screw holding Miter Gear to 15361 Worm Shaft. Remove 92848 End Bearing from front of reservoir and withdraw Worm Shaft, 15359 Worm, Thrust Bearing, Spacers, and Miter Gear. Note number and location of Shims at each end of Worm Shaft.

To remove 15275 Worm Gear: loosen 50555 Set Screw, unscrew 92854 End Bearing and withdraw 15360 Worm Gear Shaft leaving Worm Gear and 69983 Spur Gear loose in reservoir. Note location and number of Shims on Worm Gear Shaft.

Loosen Set Screws holding 15425 Stop Collar and 69914 Cam Lobes in place. Slide each Cam Lobe on Camshaft until clear of its Woodruff Key and remove Keys from Shaft. Remove 68556 Truarc Ring and 48560 Washer from Camshaft to allow removal of 15358 Spur Gear. Unscrew 40701 End Bearing and pull Camshaft through the Center Bearing and the End Bearing opening in the reservoir leaving Cam Lobes and Stop Collar loose in reservoir.

To assemble, reverse disassembly procedure.

## SERVICE PARTS

PART NO.	QUAN.	DESCRIPTION
15275	1	Worm Gear
15320	1	Spacer
15357	2	Miter Gear
15358	1	Spur Gear
15359	1	Worm (60:1)
15360	1	Worm Gea. Shaft
15361	1	Worm Shaft
15425	1	Stop Collar
15606	1	Drive Shaft
15858	1	Spacer
15859	3	Spacer
31172	1	Washer
31176	4	Washer
40701	1	End Bearing
48554	8*	Shim
48555	6*	Shim
48560	3	Washer
48572	4	Shim
50555	1	Set Screw
50555	**	Set Screw
50558	3	Set Screw
68220	6	#3 Woodruff Key
68220	**	#3 Woodruff Key
68556	2	Truarc Ring
69901	3	Thrust Bearing
69914	**	Cam Lobe
69983	1	Spur Gear
92848	2	End Bearing Assembly
92852	1	Stuffing Box Assembly
92854	1	End Bearing Assembly
103008-3	1	Washer

\* Use Shims as necessary to align gears.

\*\* One per pump

### RETAIN THIS INFORMATION FOR FUTURE REFERENCE

When ordering replacement parts, list: Part Number, Description, Model Number, and Series Letter.  
LINCOLN ST. LOUIS provides a Distributor Network that stocks equipment and replacement parts.