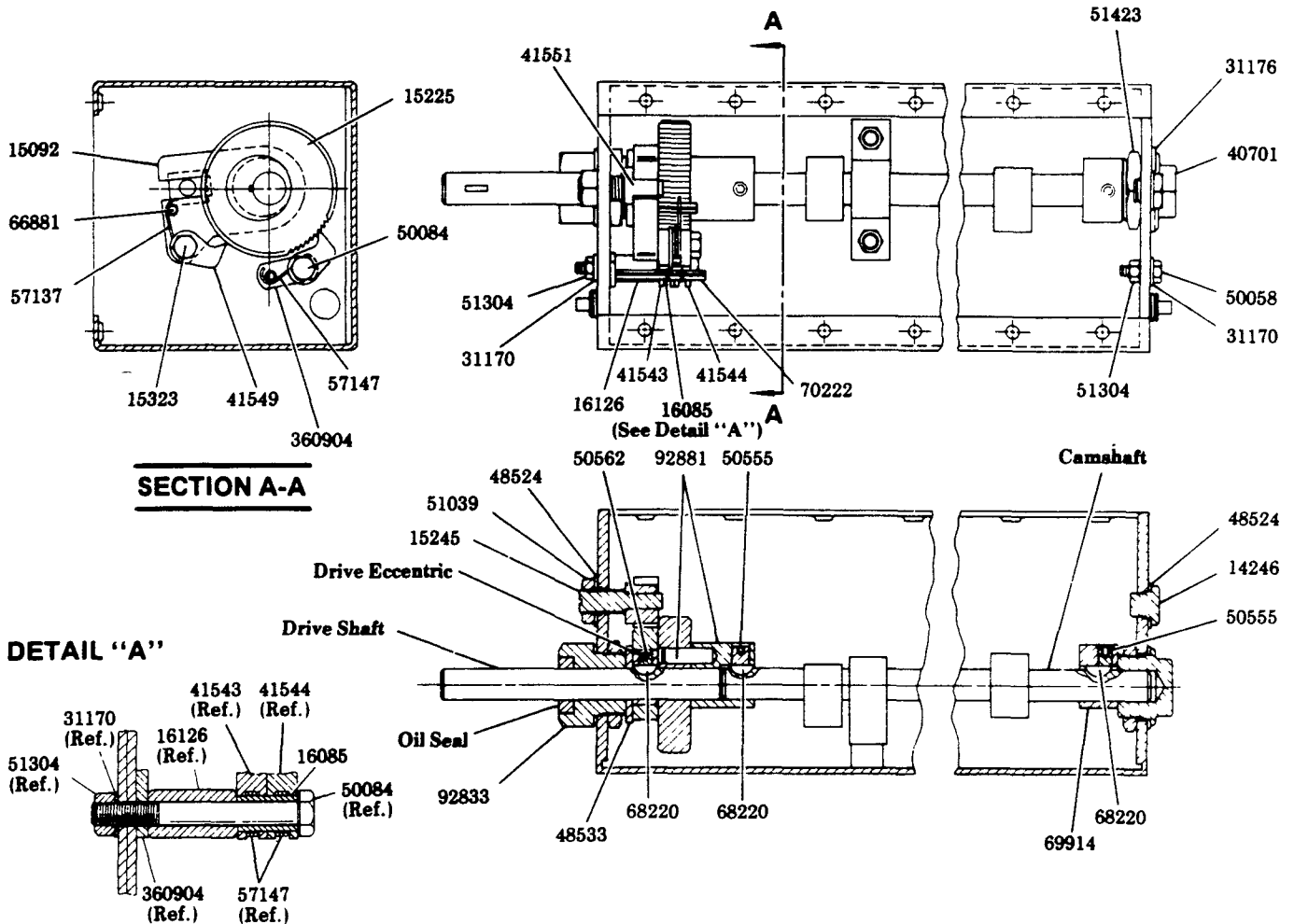


ROTARY DRIVE ADAPTATION



DISASSEMBLY INSTRUCTIONS

Drain reservoir and remove pumps, filler assembly and cover plate to allow access to lubricator drive.

Unscrew 51304 Nut from 50084 Screw and remove 31170 Washer. Withdraw 50084 Screw from inside of reservoir leaving 41543 and 41544 Pawls, 57147 Pawl Springs, 16126 Spacer, 70222 Spring Pin and 360904 Bracket assembled on screw.

Loosen 50555 Set Screws holding 69914 Cam Lobes and 92881 Eccentric & Drive Collar to camshaft. Move cam lobes clear of their 68220 Woodruff Keys and remove keys. Unscrew 51423 Locknut from 40701 End Bearing. Remove end bearing and 31176 Washer. Withdraw camshaft from reservoir. Remove 92881 Eccentric & Drive Collar and 15225 Ratchet from drive shaft. Remove 15092

Rotary Drive Arm leaving 41549 Pawl, 57137 Pawl Spring, 15323 Pawl Pin and 66881 Roll Pin attached. Loosen 50562 Set Screw holding drive eccentric to drive shaft. Remove drive eccentric, 68220 Woodruff Key and 48533 Washer. Withdraw drive shaft from reservoir. Unscrew 51423 Locknut from 92833 Stuffing Box. Remove stuffing box and 31176 Washer from reservoir.

To assemble, reverse disassembly instructions.

Drive assembly is shown at left end of reservoir. Drive shaft can be rotated clockwise or counter-clockwise. With drive assembly located at right end of reservoir, 41549 Pawl, 15323 Pawl Pin, 57137 Pawl Spring and 66881 Roll Pin are located on opposite side of 15092 Rotary Drive Arm.

LINCOLN ST. LOUIS
4010 GOODFELLOW BLVD · ST. LOUIS, MO 63120 · (314) 383 5900



SECTION - **M3**
PAGE - **20**

OIL SEALS

69853 - Buna-N material
70001 - Viton material

LUBRICATOR	SIZE	RATIO	CAMSHAFT	DRIVE SHAFT	OIL SEAL	DRIVE ECCENTRIC	LOCATION
800019	1 Gal.	37.5:1	15468	15521	69853	15236	L.H.
800028	2 Qt.	37.5:1	15424	15521	69853	15236	L.H.
800037	2 Qt.	37.5:1	15424	15521	69853	15236	R.H.
800052	2 Qt.	25:1	15424	15521	70001	15227	L.H.
800131	1 Gal.	37.5:1	15468	15521	69853	15236	R.H.
800132	2 Qt.	37.5:1	15424	15521	69853	15236	L.H.
800133	1 Qt.	37.5:1	15487	15521	69853	15236	L.H.
800139	3 Pt.	37.5:1	15426	15521	69853	15236	L.H.
800151	2 Qt.	75:1	15424	15521	69853	15235	R.H.
800154	2 Qt.	75:1	15424	15521	69853	15235	L.H.
800181	1 Gal.	75:1	15468	15521	69853	15235	L.H.
800352	3 Pt.	37.5:1	15426	15521	69853	15236	R.H.
800370	3 Pt.	37.5:1	15426	15521	70001	15236	R.H.
800711	1 Qt.	75:1	15487	15521	69853	15235	R.H.
800772	1 Qt.	75:1	15487	15521	69853	15235	L.H.
800819	3 Pt.	75:1	15426	15521	69853	15235	R.H.

SERVICE PARTS

PART	QUAN.	DESCRIPTION	PART	QUAN.	DESCRIPTION
14246	1	Plug	50084	1	Screw
15092	1	Drive arm	50555	1	Set screw
15225	1	Ratchet	50555	*	Set screw
15245	1	Screw	50562	1	Set screw
15323	1	Pawl pin	51039	1	Nut
16085	1	Pawl spacer	51304	2	Locknut
16126	1	Spacer	51423	2	Locknut
31170	2	Washer	57137	1	Spring
31176	2	Washer	57147	2	Pawl spring
40701	1	End bearing	66881	1	Roll pin
41543	1	Brake pawl (short)	68220	2	#3 Woodruff key
41544	1	Brake pawl (long)	68220	*	#3 Woodruff key
41549	1	Pawl	69914	*	Cam lobe
41551	1	Slide block	70222	1	Spring pin
48524	2	Washer	92833	1	Stuffing box assembly
48533	1	Washer	92881	1	Eccentric & drive collar
50058	1	Screw	360904	1	Bracket

*1 per pump.

RETAIN THIS INFORMATION FOR FUTURE REFERENCE

When ordering replacement parts, list: Part Number, Description, Model Number, and Series Letter.
LINCOLN ST. LOUIS provides a Distributor Network that stocks equipment and replacement parts.