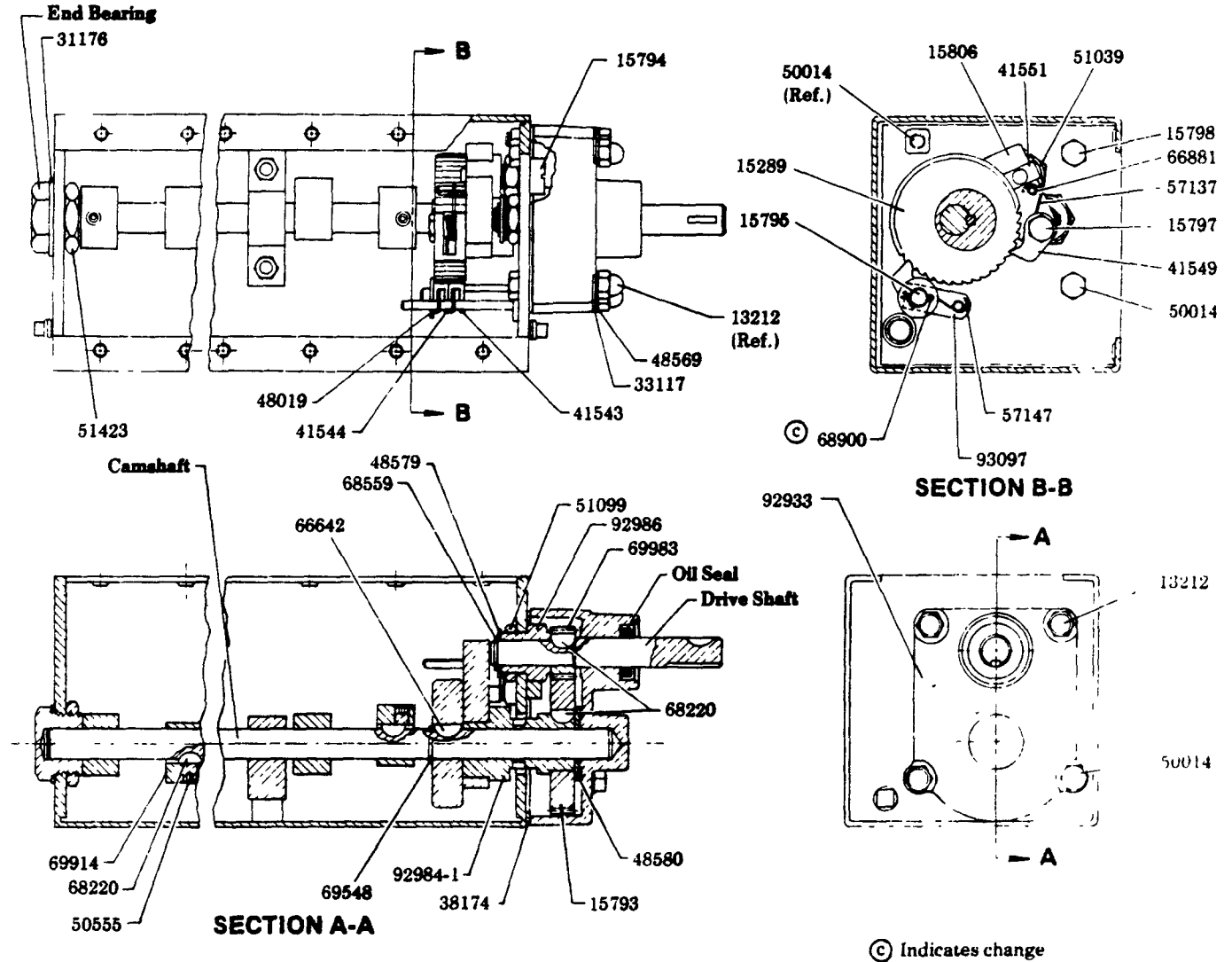


ROTARY DRIVE ADAPTATION

SPUR GEAR DRIVE 112.5:1 RATIO



DISASSEMBLY INSTRUCTIONS

Drain reservoir and remove pumps, filler assembly and cover plate to allow access to lubricator drive.

Unscrew the three 13212 Acorn Nuts and the 50014 Screw holding 92933 Housing and remove housing, 38174 Gasket and 48580 Washer. Uncouple 68559 Retaining Ring and withdraw drive shaft, removing retaining ring and 48579 Washer, 15793 and 69983 Spur Gears and both 68220 Keys. Unscrew 51099 Nut and remove nut and 92986 Drive Shaft Bearing.

Loosen 50555 Set Screws holding 69914 Cam Lobes to camshaft. Move cam lobes clear of their 68220 Woodruff Keys and remove keys. Remove 15795 Brake Pawl Pin leaving 41543 and 41544 Brake Pawls, 57147 Springs and 93097 Spring Pin attached. Remove

69548 Retaining Ring. Move 15289 Ratchet clear of 66642 Woodruff Key and remove key. Unscrew 51423 Nut from End Bearing and withdraw Camshaft from drive end of reservoir. Remove 15289 Ratchet. Remove 15806 Rotary Drive Arm with 15797 Pawl Pin 41549 Pawl, 57137 Spring and 66881 Roll Pin attached. Withdraw 92984-1 Drive Eccentric from inside of reservoir.

To assemble, reverse disassembly instructions.

Drive assembly is shown at right end of reservoir. Drive shaft can be rotated clockwise or counter-clockwise. With drive assembly located at left end of reservoir, 15797 Pawl Pin, 41549 Pawl, 57137 Spring and 66881 Roll Pin are located on opposite side of 15806 Rotary Drive Arm.

LINCOLN
A DIVISION OF
McNEIL CORPORATION

One Lincoln Way
St. Louis, MO 63120-1578
(314) 679-4200

SECTION - M3
PAGE - 21B

| LUBRICATOR | RESERVOIR SIZE | DRIVE LOCATION | *OIL SEAL | CAMSHAFT | DRIVE SHAFT | END BEARING |
|------------|----------------|----------------|-----------|----------|-------------|-------------|
| 800064 | 1-1/2 Gal. | Left Hand | 69853 | 93434 | 15522 | 40701 |
| 800066 | 2 Qt. | Right Hand | 69853 | 93430 | 15522 | 40701 |
| 800119 | 3 Pt. | Right Hand | 69853 | 93429 | 15522 | 40701 |
| 800121 | 2 Qt. | Right Hand | 69853 | 93430 | 15522 | 40701 |
| 800143 | 2 Qt. | Left Hand | 69853 | 93430 | 15522 | 40701 |
| 800156 | 1 Gal. | Left Hand | 69853 | 93431 | 15522 | 40701 |
| 800157 | 1-1/2 Gal. | Right Hand | 69853 | 93434 | 15522 | 40701 |
| 800178 | 3 Gal. | Right Hand | 69853 (2) | 93433-1 | 15522 | 880229 |
| 800289 | 1 Gal. | Right Hand | 69853 | 93431 | 15522 | 40701 |
| 800327 | 2 Qt. | Right Hand | 70001 | 93430 | 15522 | 40701 |
| 800391 | 3 Pt. | Left Hand | 69853 | 93429 | 15522 | 40701 |
| 800896 | 2 Qt. | Right Hand | 69930 | 93430 | 16396 | 40701 |
| 800960 | 3 Gal. | Left Hand | 70001 (4) | 93433-2 | 15522 | 880251 |
| 801004 | 4 Gal. | Left Hand | 70001 (4) | 93461-2 | 15522 | 880251 |
| 801005 | 5 Gal. | Left Hand | 70001 (5) | 93474-1 | 15522 | 880251 |
| 801044 | 4 Gal. | Right Hand | 70001 (4) | 93461-2 | 15522 | 880251 |
| 801162 | 1 Gal. | Right Hand | 69853 | 93431 | 15522 | 40701 |
| 801183 | 1 Gal. | Right Hand | 70001 | 93431 | 15522 | 40701 |

***OIL SEAL**

69853 & 69930 Buna-N material
70001 Viton material

Number in parenthesis indicates quantity required.

SERVICE PARTS

| PART | QUAN. | DESCRIPTION | PART | QUAN. | DESCRIPTION |
|-------|-------|--------------------|---------|-------|---------------------|
| 13212 | 3 | Nut | 50555 | ** | Set screw |
| 15289 | 1 | Ratchet | 51039 | 1 | Nut |
| 15793 | 1 | Spur gear | 51099 | 1 | Nut |
| 15794 | 1 | Slide pivot stud | 51423 | 1 | Nut |
| 15795 | 1 | Brake pawl pin | 57137 | 1 | Spring |
| 15797 | 1 | Pawl pin | 57147 | 2 | Spring |
| 15798 | 1 | Screw | 66642 | 1 | Woodruff key |
| 15806 | 1 | Rotary drive arm | 66881 | 1 | Roll pin |
| 31176 | 1 | Washer | 68220 | 2 | Woodruff key |
| 33117 | 4 | Washer | 68220 | ** | Woodruff key |
| 38174 | 1 | Gasket | 68559 | 1 | Retaining ring |
| 41543 | 1 | Brake pawl (short) | 68900 | 1 | Cotter pin |
| 41544 | 1 | Brake pawl (long) | 69548 | 1 | Retaining ring |
| 41549 | 1 | Pawl | 69914 | ** | Cam lobe |
| 41551 | 1 | Slide block | 69983 | 1 | Spur gear |
| 48019 | 1 | Washer | 92933 | 1 | Housing |
| 48569 | 4 | Washer | 92984-1 | 1 | Drive eccentric |
| 48579 | 1 | Washer | 92986 | 1 | Drive shaft bearing |
| 48580 | 1 | Washer | 93097 | 1 | Spring pin |
| 50014 | 2 | Screw | | | |

**One per pump.

RETAIN THIS INFORMATION FOR FUTURE REFERENCE

When ordering replacement parts, list: Part Number, Description, Model Number, and Series Letter.
LINCOLN ST. LOUIS provides a Distributor Network that stocks equipment and replacement parts.