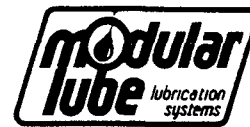
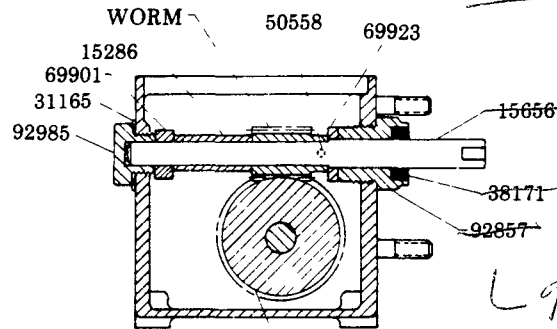
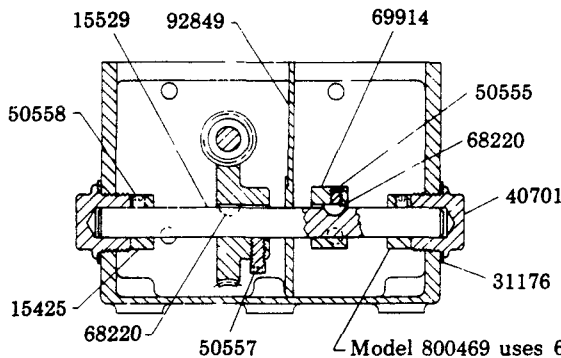


# ROTARY DRIVE ADAPTATION

## INTERNAL REAR ROTARY



800469



16502

70001

L 92833

Model 800469 uses 69914 Cam Lobe, 68220 #3 Woodruff Key and 50555 Set Screw in this location to make use of an extra pump station. All other models use 15425 Stop Collar and 50558 Set Screw.

LUBRICATOR	SIZE	RATIO	WORM	WORM GEAR
800005	3 Pint	80:1	15243	15267
800165	3 Pint	60:1	15244	15258
800254	3 Pint	60:1	15244	15258
800469	3 Pint	80:1	15243	15267

### DISASSEMBLY INSTRUCTIONS

Removal of pumps, filler, and cover plate allows access to the lubricator drive.

Unscrew 92985 End Bearing with 31165 Washer and 92857 Drive Shaft Bearing with 38171 Oil Seal. Rotate 15656 Drive Shaft until 50558 Set Screw can be removed. As drive shaft is pulled out of reservoir, 69901 and 69923 Thrust Bearings, 15286 Spacer and worm can be removed.

Unscrew 40701 End Bearings and remove with 31176 Washers from reservoir. Loosen set screws holding 15425 Stop Collars, 69914 Cam Lobes and worm gear. Move cam lobes and worm gear clear of its 68220 #3 Woodruff Key and remove keys. Remove 15529 Camshaft from reservoir allowing removal of stop collars, cam lobes and worm gear. Pull 92849 Baffle Plate Assembly out of top of reservoir.

To assemble, reverse disassembly procedure.

### SERVICE PARTS

PART	QUAN.	DESCRIPTION	PART	QUAN.	DESCRIPTION
15286	1	Spacer	50558	As req'd	Set screw
15425	As req'd	Stop collar	68220	1	#3 Woodruff key
15529	1	Camshaft	68220	*	#3 Woodruff key
15656	1	Drive shaft	69901	1	Thrust bearing
31165	1	Washer	69914	*	Cam lobe
31176	2	Washer	69923	1	Thrust bearing
38171	1	Oil seal	92849	1	Baffle plate assembly
40701	2	End bearing	92857	1	Drive shaft bearing
50555	*	Set screw	92985	1	End bearing
50557	1	Set screw			

\*One per pump station



LINCOLN, One Lincoln Way  
St. Louis, Missouri 63120-1578  
(314) 679-4200 Customer Service, (314) 679-4300

SECTION - M3  
PAGE - 22