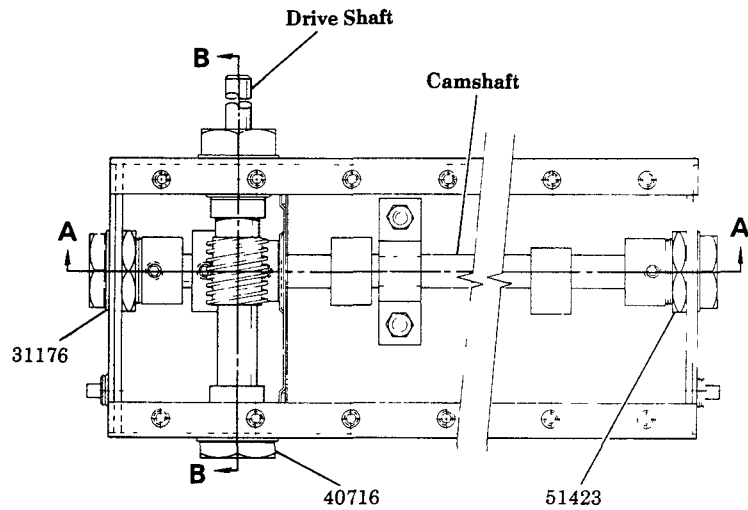
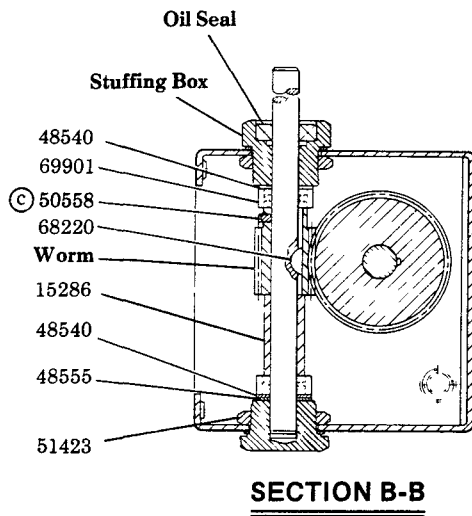


ROTARY DRIVE ADAPTATION

END INTERNAL REAR ROTARY DRIVE

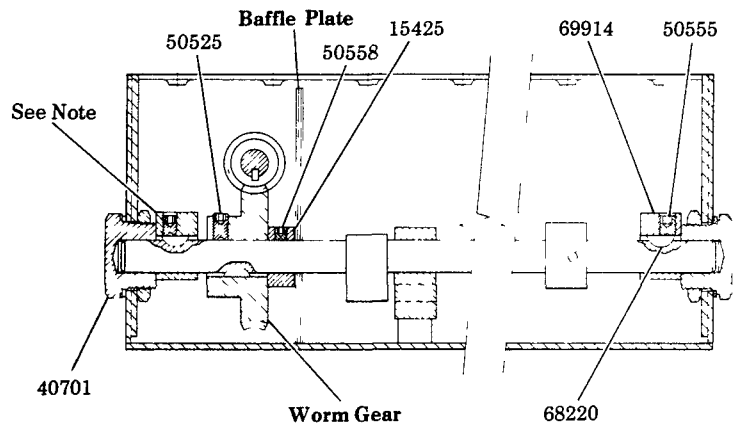


Ⓒ Indicates change

NOTE:

Models 800621, 800735 and 800736 use cam assembly (69914 Cam Lobe, 68220 Key & 50555 Set Screw) as shown. Model 800473 uses (2) 48201 Washers, (*6) 48582 Shims and (1) 48586 Washer between worm gear and end bearing.

*Shim as needed.



Lubricator	Ratio	Worm	Worm Gear	Camshaft	Drive Shaft	Baffle Plate	Oil Seal	Stuffing Box
800473	80:1	15243	15267	15619	16260	92849	69930	93057
800621	60:1	15244	15258	16176	16175	92849	69930	93057
800735	30:1	15252	15257	16309	16308	—	69853	92928
800736	30:1	15252	15257	16309	16308	—	69853	92928

DISASSEMBLY INSTRUCTIONS

1. Removal of pumps, filler assembly and cover plate allows access to the lubricator drive.
2. Loosen 50558 Set Screw in worm gear. Unscrew 40716 End Bearing and Stuffing Box from 51423 Nuts and remove end bearing and stuffing box with 31176 Washers from reservoir. Withdraw drive shaft through back of reservoir and remove 51423 Nuts, 48555 Shims, 48540 Washers, 69901 Thrust Bearings, 15286 Spacer and worm with 68220 Woodruff Key.
3. Loosen set screws holding stop collar, cam lobes and worm gear to move worm gear and cams clear of their woodruff keys and remove keys. Unscrew 40701 End Bearings from 51423 Nuts and remove end bearings with 31176 Washers from reservoir. Withdraw camshaft from one side of reservoir and remove stop collar, cams and worm gear. Baffle assembly can be withdrawn from top of reservoir.
4. To assemble, reverse disassembly instructions.



LINCOLN, One Lincoln Way
St. Louis, Missouri 63120-1578
(314) 679-4200 Customer Service, (314) 679-4300

SECTION - M3
PAGE - 24A

SERVICE PARTS

PART	QUAN.	DESCRIPTION
15286	1	Spacer
15425	1	Stop collar
31176	4	Washer
40701	2	End bearing
40716	1	End bearing
48201	2	Washer
48540	3	Washer
48555	As req'd.	Shim
48582	As req'd.	Shim
48586	1	Washer
50525	1	Set screw
50555	*	Set screw
50558	2	Set screw
51423	4	Locknut
68220	2	#3 Woodruff key
68220	*	#3 Woodruff key
69901	2	Thrust bearing
69914	*	Cam lobe

*One per pump station.

RETAIN THIS INFORMATION FOR FUTURE REFERENCE

When ordering replacement parts, list: Part Number, Description, Model Number, and Series Letter.
LINCOLN ST. LOUIS provides a Distributor Network that stocks equipment and replacement parts.