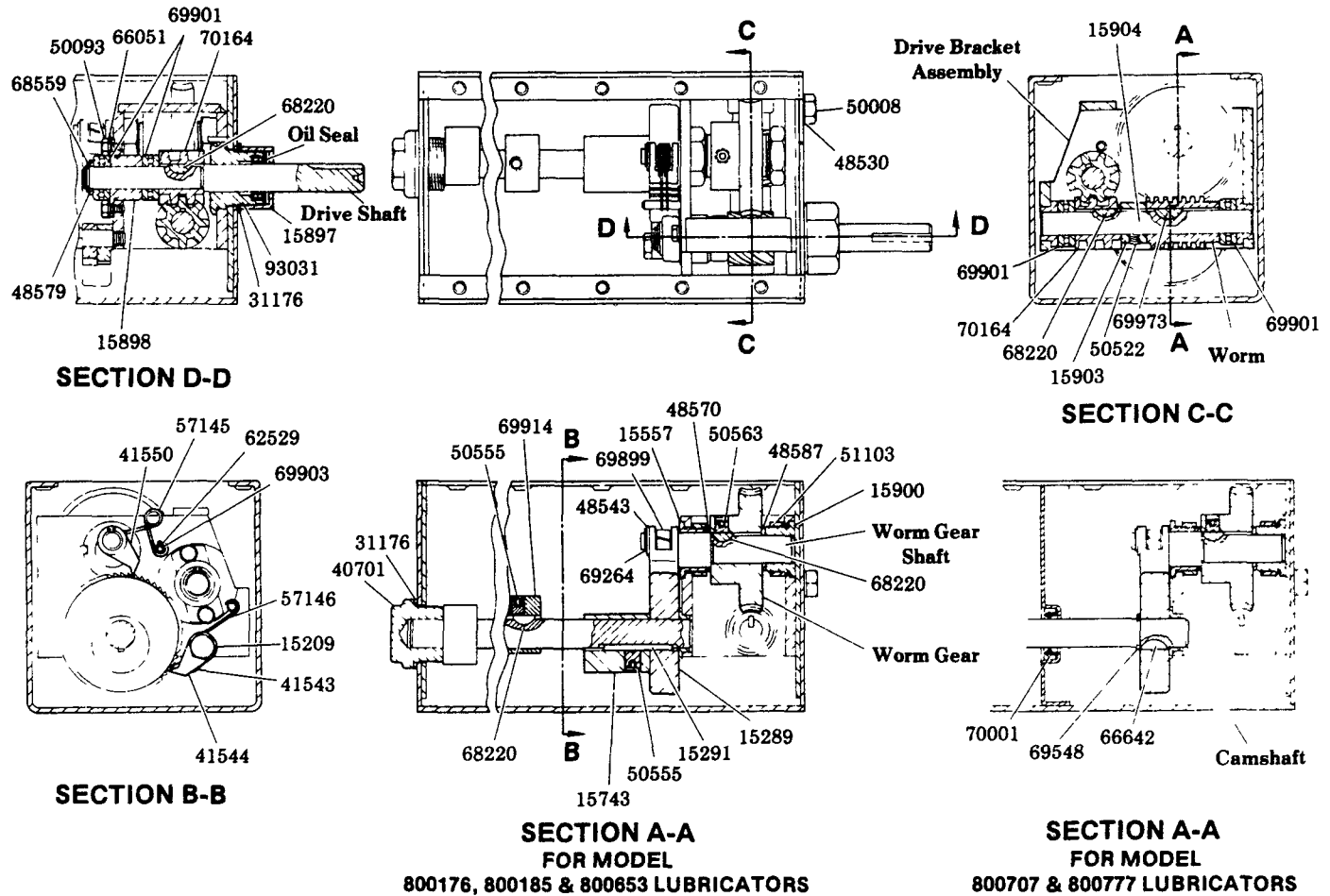


ROTARY DRIVE ADAPTATION

RATCHET HIGH RATIO
INTERNAL END ROTARY DRIVE



DISASSEMBLY INSTRUCTIONS

- 1) Drain reservoir and remove pumps, filler assembly and cover plate to allow access to lubricator drive.
 - 2) For Model 800176, 800185 & 800653 Lubricators
Loosen set screws in 15743 Eccentric & Drive Collar and 69914 Cam Lobes. Unscrew 40701 End Bearing and remove 31176 Washer. Withdraw camshaft from reservoir while removing 15289 Ratchet, 15291 Square Key, eccentric & drive collar, cam lobes and 68220 Woodruff Keys.
For Model 800707 & 800777 Lubricators
Loosen set screws in 69914 Cam Lobes. Unscrew 40701 End Bearing and remove 31176 Washer. Withdraw camshaft from reservoir while removing 15289 Ratchet, 66642 Woodruff Key, 69548 Retaining Ring, cam lobes and 68220 Woodruff Keys.
 - 3) Unscrew 50008 Screw and remove 48530 Washer. Remove 15897 Drive Bearing Cap and 31176 Washer from 93031 Drive Bearing. Remove drive bracket assembly through top of reservoir.
- NOTE:** On Models 800707 & 800777 Lubricators, it will be necessary to remove the drive shaft from the reservoir before drive bracket assembly can be removed.
- 4) Remove 68559 Retaining Ring, 48579 Washer and 69901 Thrust Bearing. Withdraw drive shaft and 68220 Woodruff Key from

reservoir while removing 69901 Thrust Bearing and 70164 Right Hand Helical Gear. Drive bracket assembly can now be removed from 800707 & 800777 Lubricators.

- 5) Remove 69264 Retaining Ring, 48543 Washer, 41550 Pawl and 69899 Bearing Liner, 57145 Pawl Springs and 62529 Spring Pin Bearing. Loosen 50563 Set Screw in worm gear and withdraw worm gear shaft and 68220 Woodruff Key from drive bracket assembly while removing 48587 Washer, worm gear and 48570 Washer.
- 6) Loosen 50522 Set Screw in 15903 Spacer. Slide shaft right until 69973 Woodruff Key is stopped by the 69901 Thrust Bearing. Remove left thrust bearing. Slide shaft left until the right thrust bearing can be removed. Separate 70164 Right Hand Helical Gear and worm for removal of their keys. Withdraw 15904 Worm Shaft from drive bracket assembly and remove worm, spacer and right hand helical gear.

NOTE: When assembling 15904 Worm Shaft and parts into drive bracket assembly, align keyways of worm, spacer and right hand helical gear with keyseats in worm shaft for ease of assembly.

- 7) To assemble, reverse disassembly instructions.



LINCOLN, One Lincoln Way
St. Louis, Missouri 63120-1578
(314) 679-4200 Customer Service, (314) 679-4300

SECTION - M3
PAGE - 26

MODEL CHART

LUBRICATOR	RATIO	WORM	WORM GEAR SHAFT	WORM GEAR	DRIVE BRACKET ASSEMBLY
800176	1500:1	15240	15906	15256	93028
800185	250:1	15253	15901	69835	93030
800653	250:1	15253	15901	69835	93030
800707	750:1	15270	15906	15297	93028
800777	750:1	15270	15906	15297	93028

CAMSHAFT	ROTATION	DRIVE LOCATION	OIL SEAL
15905	C.C.W.	RIGHT HAND	70077
15943	C.W.	LEFT HAND	70077
15950	C.C.W.	LEFT HAND	70077
16330	C.W./C.C.W.	RIGHT HAND	70177
16330	C.W./C.C.W.	RIGHT HAND	70177

SERVICE PARTS

PART	QUAN.	DESCRIPTION	PART	QUAN.	DESCRIPTION
15209	1	Pawl pin	50555	1	Set screw
15289	1	Ratchet	50555	*	Set screw
15291	1	Square key	50563	1	Set screw
15557	1	Bearing	51103	2	Nut
15743	1	Eccentric & drive collar	57145	2	Pawl spring
15897	1	Drive bearing cap	57146	2	Brake pawl spring
15898	1	End bearing	62529	1	Spring pin bearing
15900	1	Bearing	66051	2	Lockwasher
15903	1	Spacer	66642	1	#61 Woodruff key
15904	1	Worm shaft	68220	3	#3 Woodruff key
31176	2	Washer	68220	*	#3 Woodruff key
40701	1	End bearing	68559	1	Retaining ring
41543	1	Brake pawl	69264	1	Retaining ring
41544	1	Brake pawl	69548	1	Retaining ring
41550	1	Pawl	69899	1	Bearing liner
48530	1	Washer	69901	4	Thrust bearing
48543	1	Washer	69903	2	Spring pin
48570	1	Washer	69914	*	Cam lobe
48579	1	Washer	69973	1	#5 Woodruff key
48587	1	Washer	70001	1	Oil seal (partition)
50008	1	Screw	70164	2	Right hand helical gear
50093	2	Screw	93031	1	Drive bearing assembly
50522	1	Set screw			

* 1 per pump

RETAIN THIS INFORMATION FOR FUTURE REFERENCE

When ordering replacement parts, list: Part Number, Description, Model Number, and Series Letter.

LINCOLN ST. LOUIS provides a Distributor Network that stocks equipment and replacement parts.