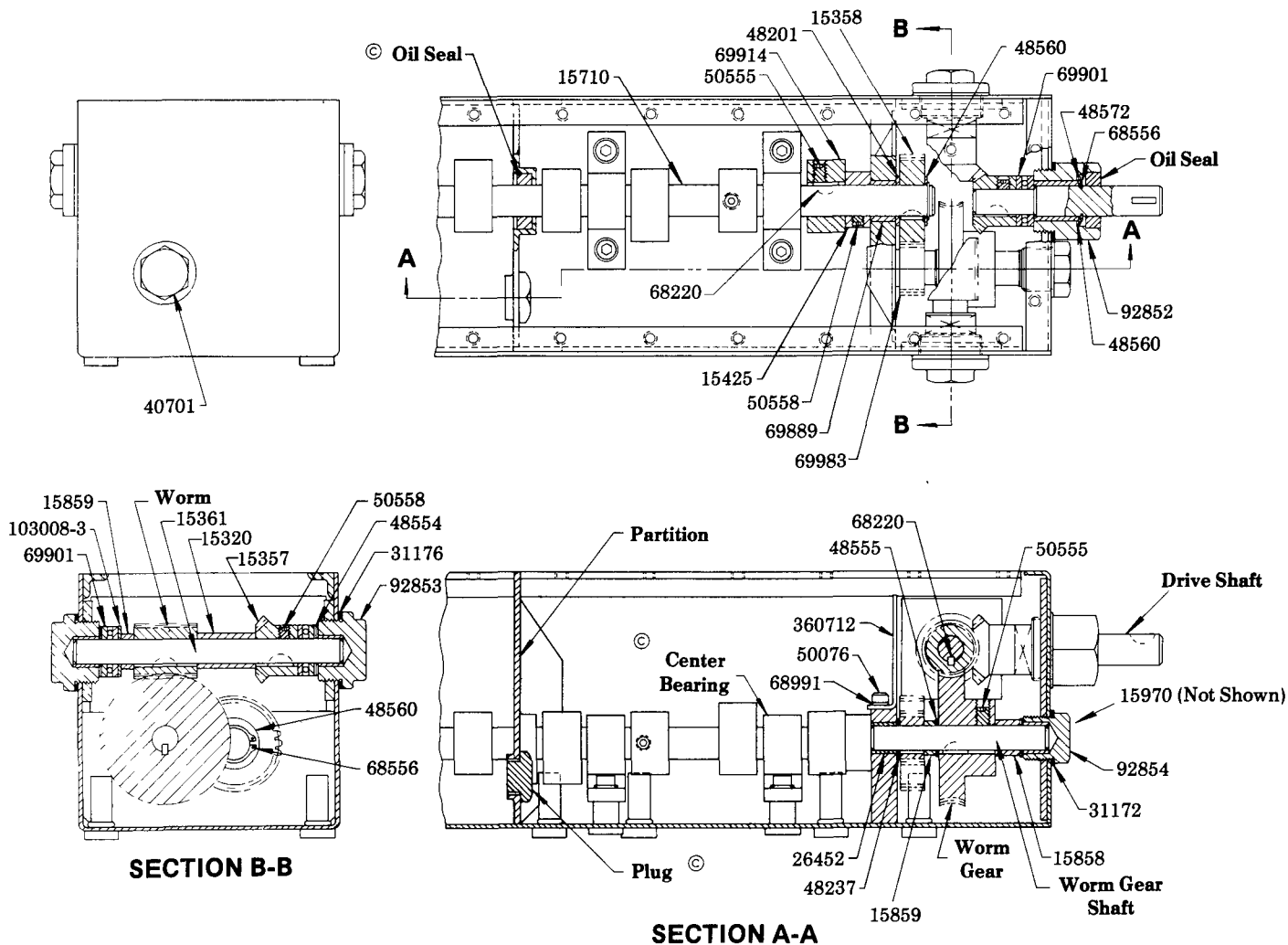


ROTARY DRIVE ADAPTATION

R.H. END DRIVE



DISASSEMBLY INSTRUCTIONS

© Indicates change

Removal of pumps, filler assembly and cover plate allows access to the lubricator drive.

Loosen 50558 Set Screw holding 15357 Miter Gear to drive shaft and unscrew 92852 Stuffing Box Assembly from reservoir to allow removal of drive shaft, miter gear and 69901 Thrust Bearing. To remove oil seal from stuffing box, push drive shaft through from back of stuffing box. Retaining ring and shim holding shaft in place will push oil seal out.

Loosen set screw holding miter gear to 15361 Worm Shaft. Remove 92853 End Bearing from front of reservoir and withdraw worm shaft, worm, thrust bearing, spacers, and miter gear. Note number and location of shims at each end of worm shaft.

To remove worm gear: loosen 50555 Set Screw, unscrew 92854 End Bearing and withdraw worm gear shaft leaving worm gear and 69983 Spur Gear loose in reservoir. Note location and number of shims on worm gear shaft.

Remove 68556 Retaining Ring to allow removal of 48560 Washer, 15358 Spur Gear, 68220 Woodruff Key and 48201 Washer from camshaft. Loosen set screws holding 15425 Stop Collar and 69914 Cam Lobes in place. Slide each cam lobe clear of its woodruff key and remove keys. Unscrew end bearing and turn camshaft until 68220 Woodruff Key under cam lobe at drive end of shaft aligns with keyway in center bearing. Pull camshaft through end bearing opening in reservoir until key is clear of center bearing and remove key. Withdraw camshaft from reservoir leaving cam lobes and stop collar loose in reservoir. Do not remove center bearings.

To assemble, reverse disassembly procedure.

LINCOLN ST. LOUIS
4010 GOODFELLOW BLVD • ST LOUIS, MO 63120 • (314) 383 5900



A DIVISION OF
McNEIL
CORPORATION

SECTION **-M3**
PAGE **-2A**

LUBRICATOR	RATIO	WORM	WORM GEAR	WORM GEAR SHAFT	DRIVE SHAFT	*69853 OIL SEAL	*67044 DRAIN PLUG
800013	111:1	15359	15275	15360	15606	3 req'd	2 req'd
800613	111:1	15359	15275	15360	15606	1 req'd	—
800676	37.3:1	16221	15297	16222	16224	3 req'd	2 req'd

* Models 800013 and 800676 include two partitions which require a 69853 Oil Seal and a 67044 Drain Plug in each partition. All models include one 69853 Oil Seal in 92852 Drive Shaft Bearing Assembly.

OIL SEALS

Material	Oil Seal
Buna-N	69853
Viton	70001

SERVICE PARTS

PART	QUAN.	DESCRIPTION
15320	1	Spacer
15357	2	Gear
15358	1	Gear
15361	1	Worm shaft
15425	1	Stop collar
15710	1	Camshaft
15858	1	Washer
15859	2	Spacer
15970	1	End bearing
26452	1	Bushing
31172	2	Washer
31176	4	Washer
40701	1	End bearing
48201	1	Washer
48237	1	Washer
48554	8	Shim
48555	6	Shim
48560	2	Washer
48572	4	Shim
50076	1	Screw
50555	1	Set screw
50555	*	Set screw
50558	3	Set screw
68220	6	#3 Woodruff key
68220	*	#3 Woodruff key
68556	2	Retaining ring
68991	1	Lockwasher
69889	1	Bushing
69901	3	Bearing
69914	*	Cam lobe
69983	1	Spur gear
92852	1	Drive shaft bearing assembly
92853	2	End bearing assembly
92854	1	End bearing assembly
103008-3	1	Washer
360712	1	Baffle plate

* 1 per pump station

RETAIN THIS INFORMATION FOR FUTURE REFERENCE

When ordering replacement parts, list: Part Number, Description, Model Number, and Series Letter.
 LINCOLN ST. LOUIS provides a Distributor Network that stocks equipment and replacement parts.