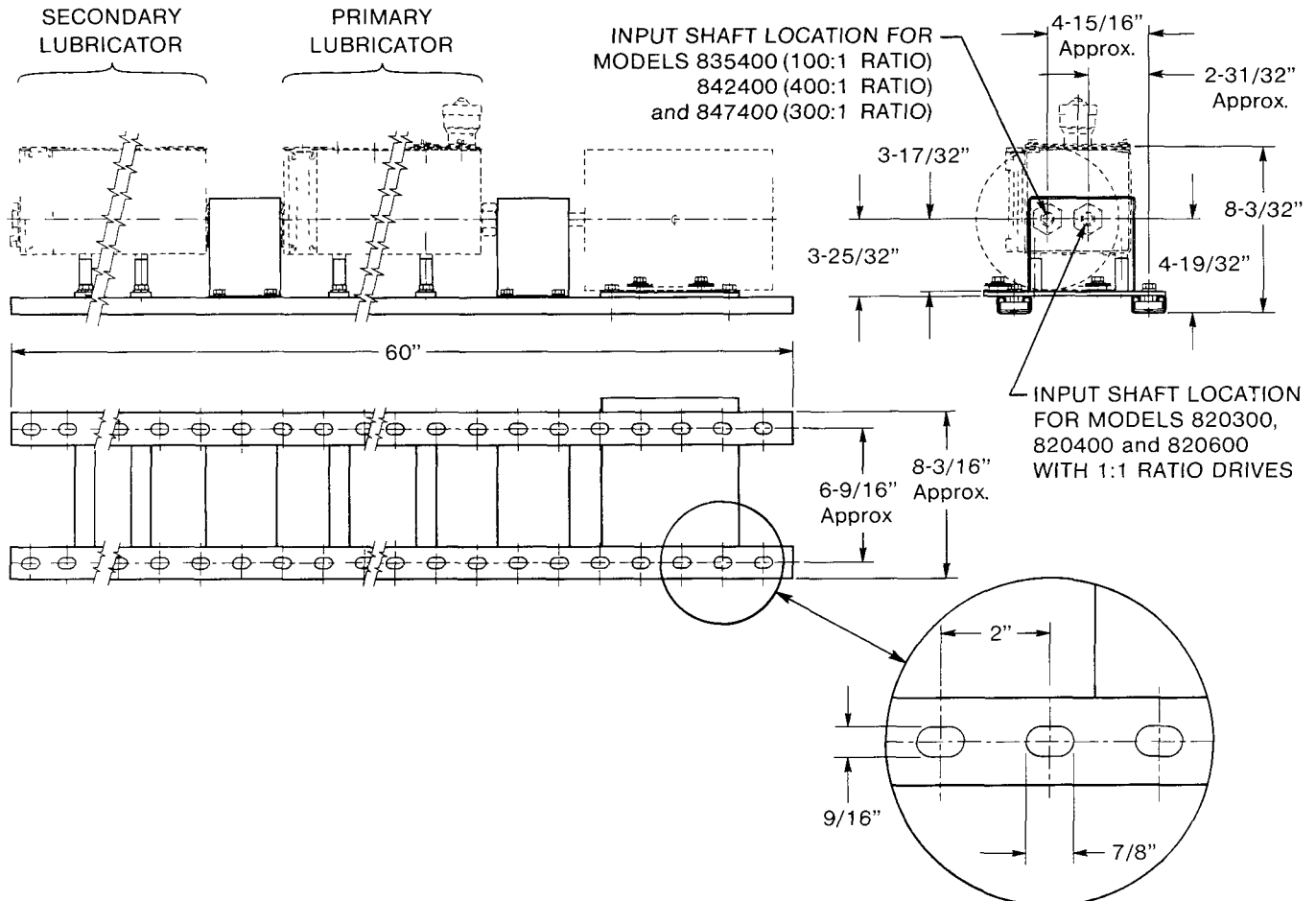


**FOR USE WITH MODELS 820300, 820400, 820600,  
835400, 842400, and 847400 LUBRICATORS**

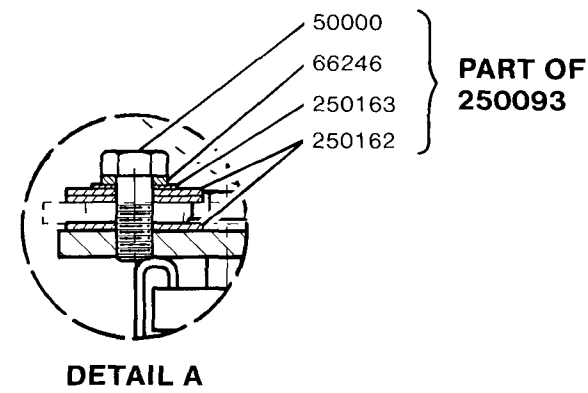
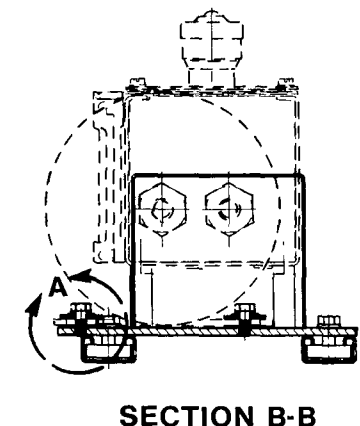
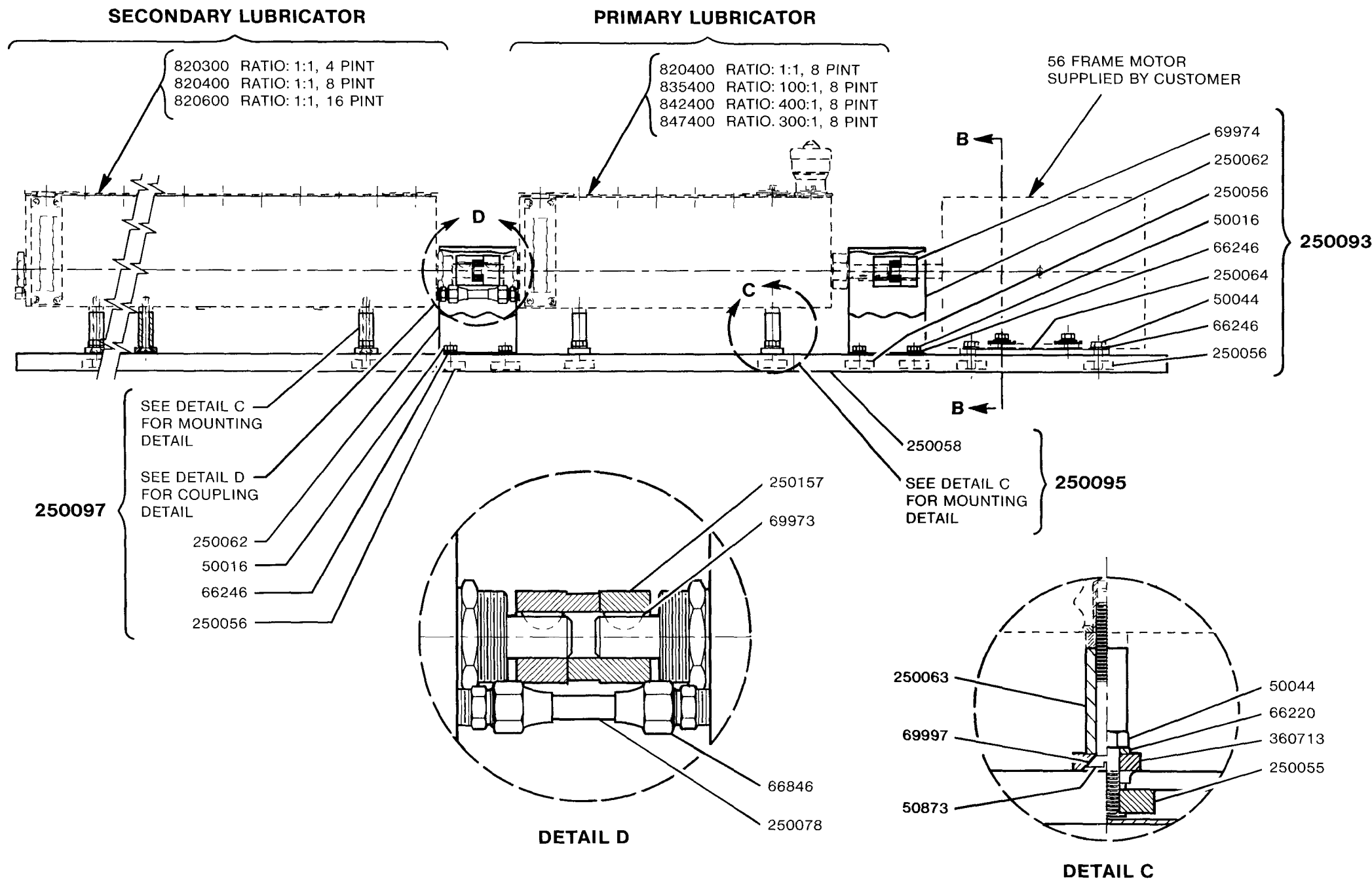


**DESCRIPTION**

**Model 250095 Tandem Lubricator Mounting Kit**, includes two mounting rails and the hardware necessary to attach an 8 pint primary lubricator. The rails allow for the addition of a secondary lubricator and an electric driving motor. If an electric motor is used, **Model 250093 Motor Mounting Kit** is recommended. The primary lubricator may also be driven by other suitable inputs, such as direct connection, chains, belts, or a gear reducer. The primary lubricator contains the drive reduction, if any. For optimum pump performance the cam shaft should operate between 4 and 6 RPM, but cam shaft speeds between 1 and 30 RPM may be used.

If larger capacity is required, a secondary lubricator may be added to the primary lubricator assembly by using **Model 250097 Secondary Lubricator Mounting Kit**. The secondary lubricator incorporates a direct connecting cam shaft, (no drive reduction is present in the secondary lubricator), which is coupled to the primary lubricator.

The secondary lubricator may be of 4, 8, or 16 pint capacity. **No more than one secondary lubricator should be driven by the primary lubricator unit.**



**NOTE:** When installing electric motor, use shims 250162 and 250163 as required between motor base and motor mounting plate (250064) to align motor shaft with lubricator drive shaft. Place unused shims between lock washer (66246) and motor base as shown in illustration above.

**RESERVOIR COUPLING**

For a common lubricant supply, reservoirs of the primary and secondary lubricators may be joined together with the coupling tube included in the 250097 Mounting Kit. (See **Detail D**) If two lubricants are required the coupling may be omitted, but an **880085 Filler Cap Assembly** must be used on each reservoir. One filler cap is standard on the 8 pint reservoirs, but must be ordered separately for the 4 and 16 pint reservoirs.

**ELECTRIC MOTORS**

If an electric motor is to be used, it is recommended that a 56 frame, 1/3 H.P. motor be installed. **Model 250093 Motor Mounting Kit** includes all required hardware for mounting a 56 frame size electric motor.

**PUMP MOUNTING**

When pumps are mounted to the reservoirs, care should be taken to place the pumps with the highest back pressures closest to the drive end of the lubricator assembly. Pumps operating over 4000 PSI **MUST** be placed on the primary lubricator.

SERVICE PARTS MODEL 250093 MOTOR MOUNTING KIT		
Part	Qty.	Description
50000	4	Hex bolt
50016	4	Hex bolt
50044	4	Hex bolt
66246	12	Lock washer
69974	1	Shaft coupling
250056	8	5/16 twirl nut
250062	1	Coupling guard
250064	1	Motor mounting plate
250162	As req'd.	Shim (Pkg. of 12)
250163	As req'd.	Shim (Pkg. of 10)

SERVICE PARTS MODEL 250095 TANDEM LUBRICATOR MOUNTING KIT		
Part	Qty.	Description
50044	4	Hex bolt
50873	4	Flat head mach. bolt
66220	4	Lock washer
69997	4	C'sink lock washer
250055	4	3/8 twirl nut
250058	2	Mounting rail
250063	4	Spacer
360713	2	Mounting bracket

SERVICE PARTS MODEL 250097 SECONDARY LUBRICATOR MOUNTING KIT		
Part	Qty.	Description
50016	4	Hex bolt
50044	6	Hex bolt
50873	6	Flat head mach. bolt
66220	6	Lock washer
66246	4	Lock washer
66846	2	Tubing adapter
69973	1	Woodruff key
69997	6	C'sink lock washer
250055	6	3/8 twirl nut
250056	4	5/16 twirl nut
250062	1	Coupling guard
250063	6	Spacer
250078	1	Coupling tube
250157	1	Shaft coupling
360713	3	Mounting bracket

---

**RETAIN THIS INFORMATION FOR FUTURE REFERENCE**

When ordering replacement parts, list: Part Number, Description, Model Number and Series Letter.

LINCOLN provides a Distributor Network that stocks equipment and replacement parts.